

GLOBAL STYLE SAFETY LIMIT SWITCHES (METAL BODIED EN50047 COMPATIBLE) SN2 SERIES (3 - CONDUIT ENTRIES)

We are committed to delivering world class products and services efficiently and effectively to our customers and their total satisfaction is our goal.



Features

- Zinc die cast body
- Earth grounding surface on same level as switching
- Easily interchangeable contact block
- Galvanically separated contacts
- Screw terminals with self-lifting clamps for easy wiring
- Positive Opening of NC contacts
- 4 x 90° actuator positions
- Cable entry available: M20, PG13.5 and 1/2"NPT
- Conform to EN 50047 standard

Definitions of Operating Characteristics

| | | |
|----|----------------------------|--------|
| OF | Operating Force | |
| RF | Releasing Force | |
| OT | Overtravel | |
| TT | Total Travel | |
| PT | Pretravel | |
| MD | Movement Differential | ON OFF |
| OP | Operating Position | |
| PO | Travel to Positive Opening | |

Specifications

| | |
|-----------------------|--|
| Operating Speed | 0.05mm-2m/sec |
| Operating Frequency | Mechanical: 120ops/min Electrical: 30 ops/min |
| Insulation Resistance | >100MΩ@ 500V DC |
| Contact Resistance | <25mΩ (initial value) |
| Rated Current/Voltage | 10A/600V AC (EN60947-5-1) UL/cUL Listed (E216958) AC15 A600 / DC13 Q300 |
| Dielectric Strength | 1000VAC for 1 min between current carrying parts 2500VAC for 1 min between non-current carrying parts |
| Service Life | Mechanically 1.0 x10 ⁷ (operations) Electrically 5 x10 ⁵ (operations) |
| Operating Temperature | -25~+80°C (-13~176°F) with no icing |
| Humidity | < 95%RH |
| Weight | 270-320g |
| Degree of Protection | IP67 |

Selection Guide:

SN21

Body Styles

04

Head Styles

SP

Contact Block

- SP* 1NO/1NC Snap action
- SL* BBM 1NO/1NC Slow Action changeover
- SL1*MBB 1NO/1NC Slow Action Overlapping
- SL2*2NC Slow Action
- SL3*2NO Slow Action
- SL4*3NC Slow Action
- SL5*3NO Slow Action
- SL6*BBM 2NC/1NO Slow Action changeover
- SL7*MBB 2NC/1NO Slow Action Overlapping
- SL8*BBM 2NO/1NC Slow Action changeover
- SL9*MBB 2NO/1NC Slow Action Overlapping

C

Conduits

- A: 1/2"NPT
- B: PG13.5
- C: M20
- D: M16
- B1: PG11

R

- Blank
- R: with Reset

GLOBAL STYLE SAFETY LIMIT SWITCHES (METAL BODIED EN50047 COMPATIBLE) SN2 SERIES (3 - CONDUIT ENTRIES)

Available contact blocks and travel diagrams

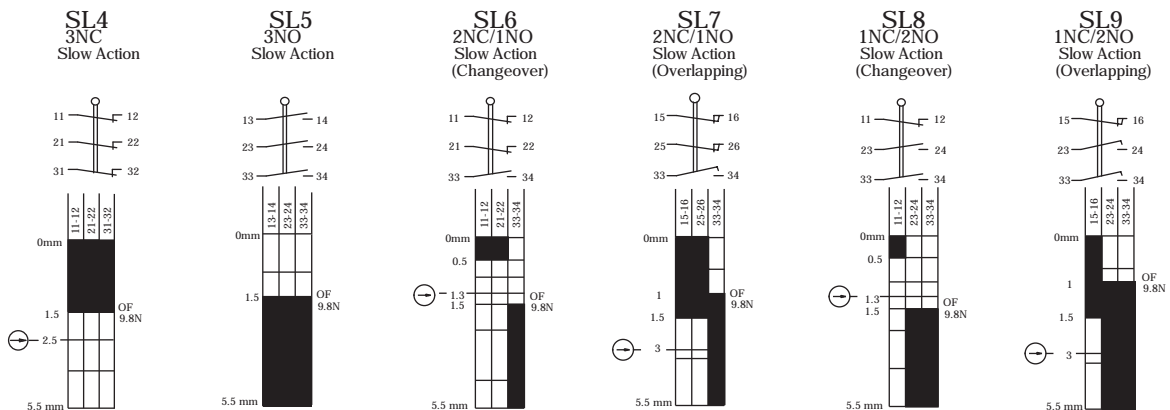
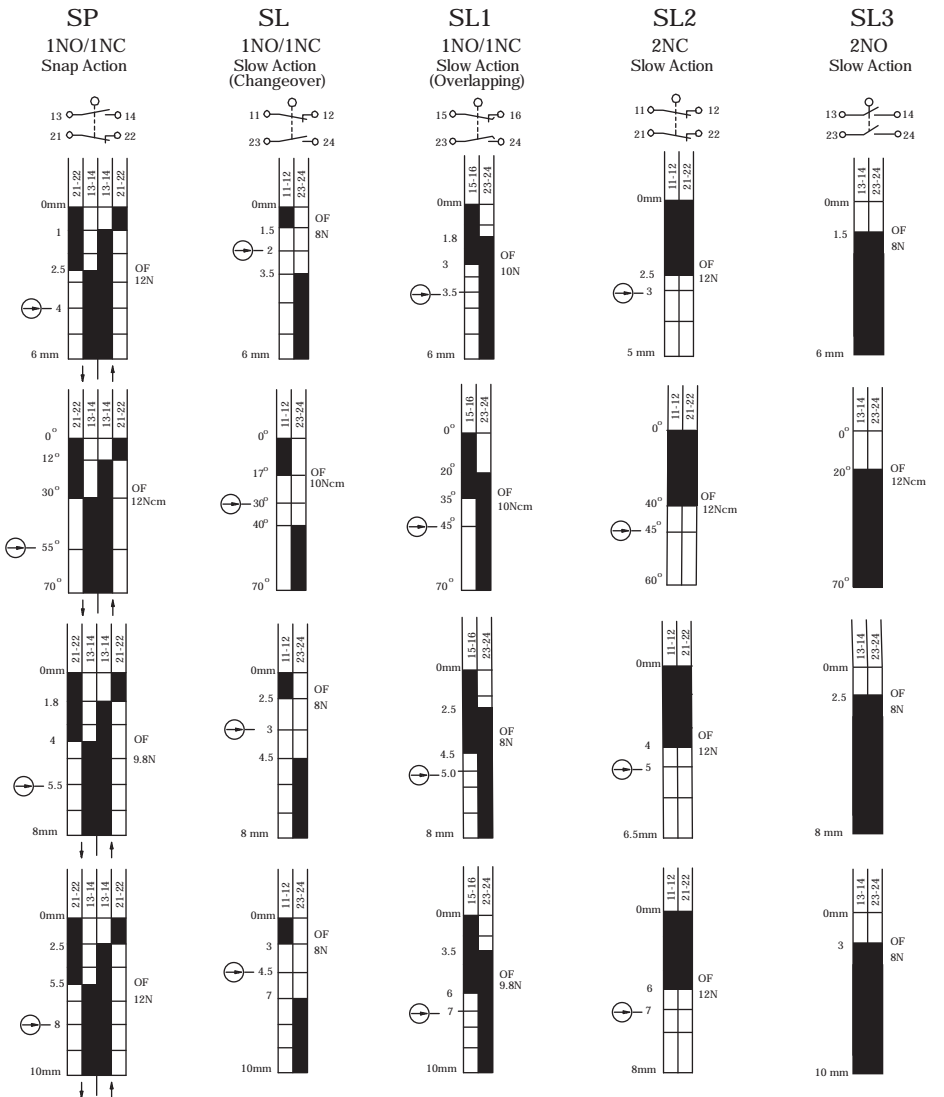


Plunger type
11, 12, 31, 32 styles

Side rotary type
04, 07, 08, 14, 18 Styles

62, 63 styles

72, 73 styles

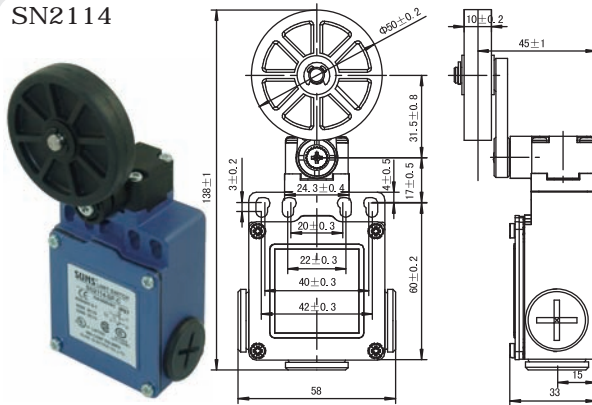


GLOBAL STYLE SAFETY LIMIT SWITCHES (METAL BODIED EN50047 COMPATIBLE) SN2 SERIES (3 - CONDUIT ENTRIES)

| <p>SN2111</p> | <p>SN2112</p> | | | | | | | | | | | | | | | | | | | | | | | | | | | | | | | | | | | | | | | | |
|--|----------------------|---------------|---------------|---------------|--------------|----|---------------|---------|--------------|----|---------------|-------------|---------------|-----|---------------|-------------|---------------|-----|---------------|-----|--|------------|---------------|--------|---------------|--------------|----|---------------|---------|--------------|----|---------------|-------------|---------------|-----|---------------|-------------|---------------|-----|---------------|-----|
| <table border="1"> <thead> <tr> <th>Order Code</th> <th>Contact block</th> <th>Action</th> <th>Configuration</th> </tr> </thead> <tbody> <tr> <td>SN2111-SP- _</td> <td>SP</td> <td>→ snap action</td> <td>1NO+1NC</td> </tr> <tr> <td>SN2111-SL- _</td> <td>SL</td> <td>→ slow action</td> <td>1NO+1NC BBM</td> </tr> <tr> <td>SN2111-SL1- _</td> <td>SL1</td> <td>→ slow action</td> <td>1NO+1NC MBB</td> </tr> <tr> <td>SN2111-SL2- _</td> <td>SL2</td> <td>→ slow action</td> <td>2NC</td> </tr> </tbody> </table> | Order Code | Contact block | Action | Configuration | SN2111-SP- _ | SP | → snap action | 1NO+1NC | SN2111-SL- _ | SL | → slow action | 1NO+1NC BBM | SN2111-SL1- _ | SL1 | → slow action | 1NO+1NC MBB | SN2111-SL2- _ | SL2 | → slow action | 2NC | <table border="1"> <thead> <tr> <th>Order Code</th> <th>Contact block</th> <th>Action</th> <th>Configuration</th> </tr> </thead> <tbody> <tr> <td>SN2112-SP- _</td> <td>SP</td> <td>→ snap action</td> <td>1NO+1NC</td> </tr> <tr> <td>SN2112-SL- _</td> <td>SL</td> <td>→ slow action</td> <td>1NO+1NC BBM</td> </tr> <tr> <td>SN2112-SL1- _</td> <td>SL1</td> <td>→ slow action</td> <td>1NO+1NC MBB</td> </tr> <tr> <td>SN2112-SL2- _</td> <td>SL2</td> <td>→ slow action</td> <td>2NC</td> </tr> </tbody> </table> | Order Code | Contact block | Action | Configuration | SN2112-SP- _ | SP | → snap action | 1NO+1NC | SN2112-SL- _ | SL | → slow action | 1NO+1NC BBM | SN2112-SL1- _ | SL1 | → slow action | 1NO+1NC MBB | SN2112-SL2- _ | SL2 | → slow action | 2NC |
| Order Code | Contact block | Action | Configuration | | | | | | | | | | | | | | | | | | | | | | | | | | | | | | | | | | | | | | |
| SN2111-SP- _ | SP | → snap action | 1NO+1NC | | | | | | | | | | | | | | | | | | | | | | | | | | | | | | | | | | | | | | |
| SN2111-SL- _ | SL | → slow action | 1NO+1NC BBM | | | | | | | | | | | | | | | | | | | | | | | | | | | | | | | | | | | | | | |
| SN2111-SL1- _ | SL1 | → slow action | 1NO+1NC MBB | | | | | | | | | | | | | | | | | | | | | | | | | | | | | | | | | | | | | | |
| SN2111-SL2- _ | SL2 | → slow action | 2NC | | | | | | | | | | | | | | | | | | | | | | | | | | | | | | | | | | | | | | |
| Order Code | Contact block | Action | Configuration | | | | | | | | | | | | | | | | | | | | | | | | | | | | | | | | | | | | | | |
| SN2112-SP- _ | SP | → snap action | 1NO+1NC | | | | | | | | | | | | | | | | | | | | | | | | | | | | | | | | | | | | | | |
| SN2112-SL- _ | SL | → slow action | 1NO+1NC BBM | | | | | | | | | | | | | | | | | | | | | | | | | | | | | | | | | | | | | | |
| SN2112-SL1- _ | SL1 | → slow action | 1NO+1NC MBB | | | | | | | | | | | | | | | | | | | | | | | | | | | | | | | | | | | | | | |
| SN2112-SL2- _ | SL2 | → slow action | 2NC | | | | | | | | | | | | | | | | | | | | | | | | | | | | | | | | | | | | | | |
| <p>SN2162</p> | <p>SN2108</p> | | | | | | | | | | | | | | | | | | | | | | | | | | | | | | | | | | | | | | | | |
| <table border="1"> <thead> <tr> <th>Order Code</th> <th>Contact block</th> <th>Action</th> <th>Configuration</th> </tr> </thead> <tbody> <tr> <td>SN2162-SP- _</td> <td>SP</td> <td>→ snap action</td> <td>1NO+1NC</td> </tr> <tr> <td>SN2162-SL- _</td> <td>SL</td> <td>→ slow action</td> <td>1NO+1NC BBM</td> </tr> <tr> <td>SN2162-SL1- _</td> <td>SL1</td> <td>→ slow action</td> <td>1NO+1NC MBB</td> </tr> <tr> <td>SN2162-SL2- _</td> <td>SL2</td> <td>→ slow action</td> <td>2NC</td> </tr> </tbody> </table> | Order Code | Contact block | Action | Configuration | SN2162-SP- _ | SP | → snap action | 1NO+1NC | SN2162-SL- _ | SL | → slow action | 1NO+1NC BBM | SN2162-SL1- _ | SL1 | → slow action | 1NO+1NC MBB | SN2162-SL2- _ | SL2 | → slow action | 2NC | <table border="1"> <thead> <tr> <th>Order Code</th> <th>Contact block</th> <th>Action</th> <th>Configuration</th> </tr> </thead> <tbody> <tr> <td>SN2108-SP- _</td> <td>SP</td> <td>→ snap action</td> <td>1NO+1NC</td> </tr> <tr> <td>SN2108-SL- _</td> <td>SL</td> <td>→ slow action</td> <td>1NO+1NC BBM</td> </tr> <tr> <td>SN2108-SL1- _</td> <td>SL1</td> <td>→ slow action</td> <td>1NO+1NC MBB</td> </tr> <tr> <td>SN2108-SL2- _</td> <td>SL2</td> <td>→ slow action</td> <td>2NC</td> </tr> </tbody> </table> | Order Code | Contact block | Action | Configuration | SN2108-SP- _ | SP | → snap action | 1NO+1NC | SN2108-SL- _ | SL | → slow action | 1NO+1NC BBM | SN2108-SL1- _ | SL1 | → slow action | 1NO+1NC MBB | SN2108-SL2- _ | SL2 | → slow action | 2NC |
| Order Code | Contact block | Action | Configuration | | | | | | | | | | | | | | | | | | | | | | | | | | | | | | | | | | | | | | |
| SN2162-SP- _ | SP | → snap action | 1NO+1NC | | | | | | | | | | | | | | | | | | | | | | | | | | | | | | | | | | | | | | |
| SN2162-SL- _ | SL | → slow action | 1NO+1NC BBM | | | | | | | | | | | | | | | | | | | | | | | | | | | | | | | | | | | | | | |
| SN2162-SL1- _ | SL1 | → slow action | 1NO+1NC MBB | | | | | | | | | | | | | | | | | | | | | | | | | | | | | | | | | | | | | | |
| SN2162-SL2- _ | SL2 | → slow action | 2NC | | | | | | | | | | | | | | | | | | | | | | | | | | | | | | | | | | | | | | |
| Order Code | Contact block | Action | Configuration | | | | | | | | | | | | | | | | | | | | | | | | | | | | | | | | | | | | | | |
| SN2108-SP- _ | SP | → snap action | 1NO+1NC | | | | | | | | | | | | | | | | | | | | | | | | | | | | | | | | | | | | | | |
| SN2108-SL- _ | SL | → slow action | 1NO+1NC BBM | | | | | | | | | | | | | | | | | | | | | | | | | | | | | | | | | | | | | | |
| SN2108-SL1- _ | SL1 | → slow action | 1NO+1NC MBB | | | | | | | | | | | | | | | | | | | | | | | | | | | | | | | | | | | | | | |
| SN2108-SL2- _ | SL2 | → slow action | 2NC | | | | | | | | | | | | | | | | | | | | | | | | | | | | | | | | | | | | | | |
| <p>SN2104</p> | <p>SN2107</p> | | | | | | | | | | | | | | | | | | | | | | | | | | | | | | | | | | | | | | | | |
| <table border="1"> <thead> <tr> <th>Order Code</th> <th>Contact block</th> <th>Action</th> <th>Configuration</th> </tr> </thead> <tbody> <tr> <td>SN2104-SP- _</td> <td>SP</td> <td>→ snap action</td> <td>1NO+1NC</td> </tr> <tr> <td>SN2104-SL- _</td> <td>SL</td> <td>→ slow action</td> <td>1NO+1NC BBM</td> </tr> <tr> <td>SN2104-SL1- _</td> <td>SL1</td> <td>→ slow action</td> <td>1NO+1NC MBB</td> </tr> <tr> <td>SN2104-SL2- _</td> <td>SL2</td> <td>→ slow action</td> <td>2NC</td> </tr> </tbody> </table> | Order Code | Contact block | Action | Configuration | SN2104-SP- _ | SP | → snap action | 1NO+1NC | SN2104-SL- _ | SL | → slow action | 1NO+1NC BBM | SN2104-SL1- _ | SL1 | → slow action | 1NO+1NC MBB | SN2104-SL2- _ | SL2 | → slow action | 2NC | <table border="1"> <thead> <tr> <th>Order Code</th> <th>Contact block</th> <th>Action</th> <th>Configuration</th> </tr> </thead> <tbody> <tr> <td>SN2107-SP- _</td> <td>SP</td> <td>→ snap action</td> <td>1NO+1NC</td> </tr> <tr> <td>SN2107-SL- _</td> <td>SL</td> <td>→ slow action</td> <td>1NO+1NC BBM</td> </tr> <tr> <td>SN2107-SL1- _</td> <td>SL1</td> <td>→ slow action</td> <td>1NO+1NC MBB</td> </tr> <tr> <td>SN2107-SL2- _</td> <td>SL2</td> <td>→ slow action</td> <td>2NC</td> </tr> </tbody> </table> | Order Code | Contact block | Action | Configuration | SN2107-SP- _ | SP | → snap action | 1NO+1NC | SN2107-SL- _ | SL | → slow action | 1NO+1NC BBM | SN2107-SL1- _ | SL1 | → slow action | 1NO+1NC MBB | SN2107-SL2- _ | SL2 | → slow action | 2NC |
| Order Code | Contact block | Action | Configuration | | | | | | | | | | | | | | | | | | | | | | | | | | | | | | | | | | | | | | |
| SN2104-SP- _ | SP | → snap action | 1NO+1NC | | | | | | | | | | | | | | | | | | | | | | | | | | | | | | | | | | | | | | |
| SN2104-SL- _ | SL | → slow action | 1NO+1NC BBM | | | | | | | | | | | | | | | | | | | | | | | | | | | | | | | | | | | | | | |
| SN2104-SL1- _ | SL1 | → slow action | 1NO+1NC MBB | | | | | | | | | | | | | | | | | | | | | | | | | | | | | | | | | | | | | | |
| SN2104-SL2- _ | SL2 | → slow action | 2NC | | | | | | | | | | | | | | | | | | | | | | | | | | | | | | | | | | | | | | |
| Order Code | Contact block | Action | Configuration | | | | | | | | | | | | | | | | | | | | | | | | | | | | | | | | | | | | | | |
| SN2107-SP- _ | SP | → snap action | 1NO+1NC | | | | | | | | | | | | | | | | | | | | | | | | | | | | | | | | | | | | | | |
| SN2107-SL- _ | SL | → slow action | 1NO+1NC BBM | | | | | | | | | | | | | | | | | | | | | | | | | | | | | | | | | | | | | | |
| SN2107-SL1- _ | SL1 | → slow action | 1NO+1NC MBB | | | | | | | | | | | | | | | | | | | | | | | | | | | | | | | | | | | | | | |
| SN2107-SL2- _ | SL2 | → slow action | 2NC | | | | | | | | | | | | | | | | | | | | | | | | | | | | | | | | | | | | | | |

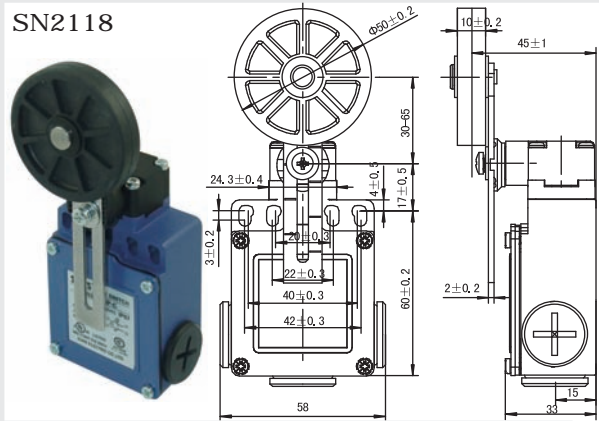
GLOBAL STYLE SAFETY LIMIT SWITCHES (METAL BODIED EN50047 COMPATIBLE) SN2 SERIES (3 - CONDUIT ENTRIES)

SN2114



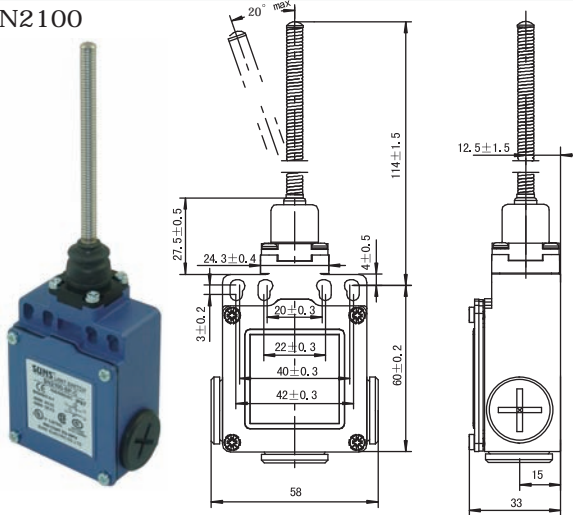
| Order Code | Contact block | | |
|---------------|---------------|-------------|-------------|
| SN2114-SP- _ | SP | snap action | 1NO+1NC |
| SN2114-SL- _ | SL | slow action | 1NO+1NC BBM |
| SN2114-SL1- _ | SL1 | slow action | 1NO+1NC MBB |
| SN2114-SL2- _ | SL2 | slow action | 2NC |

SN2118



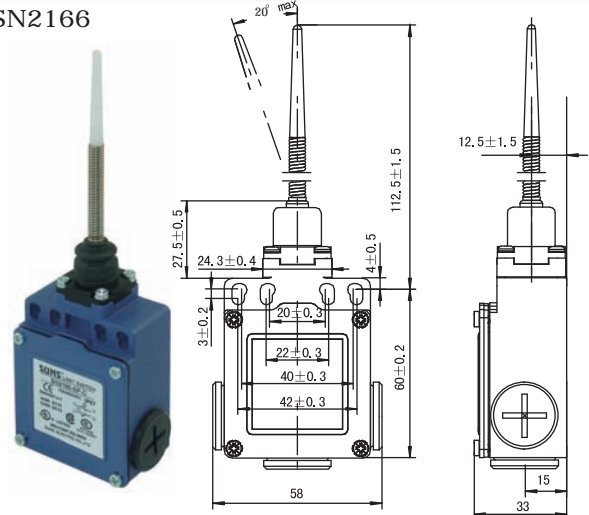
| Order Code | Contact block | | |
|---------------|---------------|-------------|-------------|
| SN2118-SP- _ | SP | snap action | 1NO+1NC |
| SN2118-SL- _ | SL | slow action | 1NO+1NC BBM |
| SN2118-SL1- _ | SL1 | slow action | 1NO+1NC MBB |
| SN2118-SL2- _ | SL2 | slow action | 2NC |

SN2100



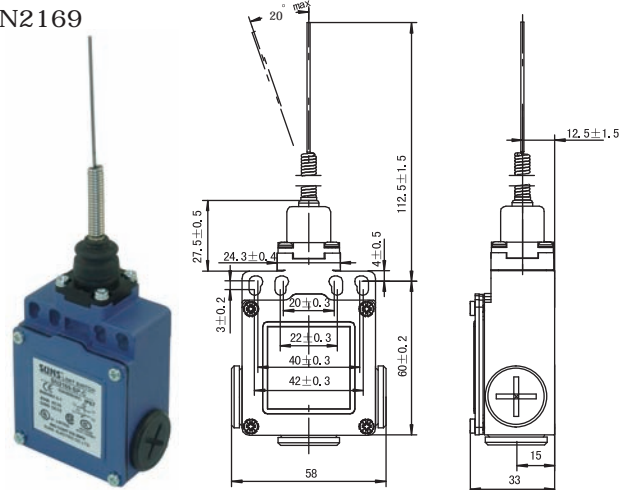
| Order Code | Contact block | | |
|--------------|---------------|-------------|---------|
| SN2100-SP- _ | SP | snap action | 1NO+1NC |

SN2166



| Order Code | Contact block | | |
|--------------|---------------|-------------|---------|
| SN2166-SP- _ | SP | snap action | 1NO+1NC |

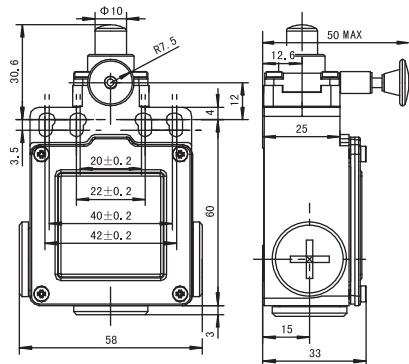
SN2169



| Order Code | Contact block | | |
|--------------|---------------|-------------|---------|
| SN2169-SP- _ | SP | snap action | 1NO+1NC |

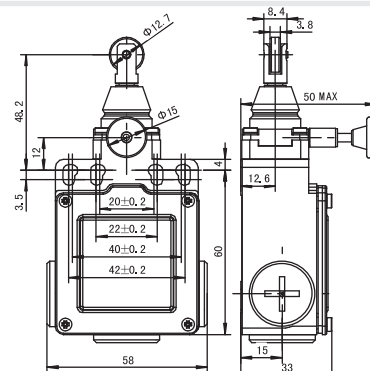
GLOBAL STYLE SAFETY LIMIT SWITCHES (METAL BODIED EN50047 COMPATIBLE) SN2 SERIES (3 - CONDUIT ENTRIES WITH RESET)

SN2111-R



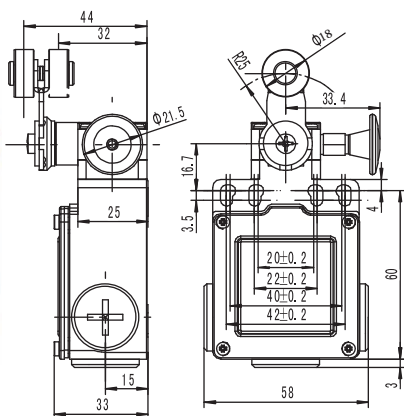
| Order Code | Contact block | | | |
|----------------|---------------|---|-------------|-------------|
| SN2111-SP- _R | SP | ↔ | snap action | 1NO+1NC |
| SN2111-SL- _R | SL | ↔ | slow action | 1NO+1NC BBM |
| SN2111-SL1- _R | SL1 | ↔ | slow action | 1NO+1NC MBB |
| SN2111-SL2- _R | SL2 | ↔ | slow action | 2NC |

SN2112-R



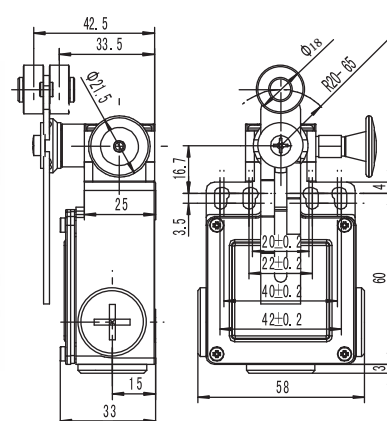
| Order Code | Contact block | | | |
|----------------|---------------|---|-------------|-------------|
| SN2112-SP- _R | SP | ↔ | snap action | 1NO+1NC |
| SN2112-SL- _R | SL | ↔ | slow action | 1NO+1NC BBM |
| SN2112-SL1- _R | SL1 | ↔ | slow action | 1NO+1NC MBB |
| SN2112-SL2- _R | SL2 | ↔ | slow action | 2NC |

SN2104-R



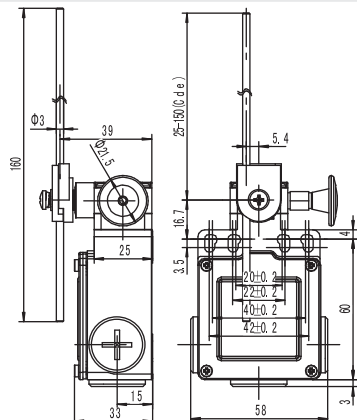
| Order Code | Contact block | | | |
|----------------|---------------|---|-------------|-------------|
| SN2104-SP- _R | SP | ↔ | snap action | 1NO+1NC |
| SN2104-SL- _R | SL | ↔ | slow action | 1NO+1NC BBM |
| SN2104-SL1- _R | SL1 | ↔ | slow action | 1NO+1NC MBB |
| SN2104-SL2- _R | SL2 | ↔ | slow action | 2NC |

SN2108-R



| Order Code | Contact block | | | |
|----------------|---------------|---|-------------|-------------|
| SN2108-SP- _R | SP | ↔ | snap action | 1NO+1NC |
| SN2108-SL- _R | SL | ↔ | slow action | 1NO+1NC BBM |
| SN2108-SL1- _R | SL1 | ↔ | slow action | 1NO+1NC MBB |
| SN2108-SL2- _R | SL2 | ↔ | slow action | 2NC |

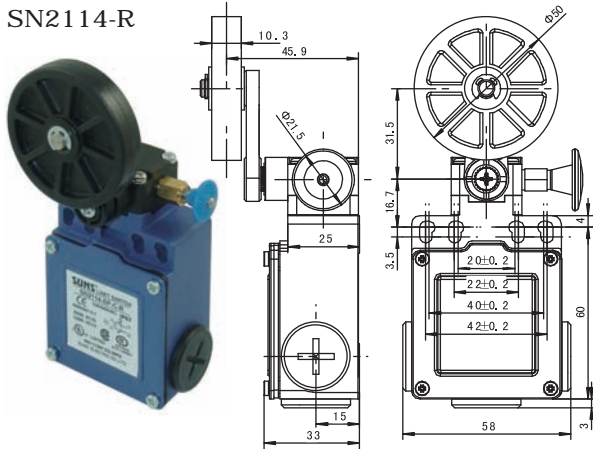
SN2107-R



| Order Code | Contact block | | | |
|----------------|---------------|---|-------------|-------------|
| SN2107-SP- _R | SP | ↔ | snap action | 1NO+1NC |
| SN2107-SL- _R | SL | ↔ | slow action | 1NO+1NC BBM |
| SN2107-SL1- _R | SL1 | ↔ | slow action | 1NO+1NC MBB |
| SN2107-SL2- _R | SL2 | ↔ | slow action | 2NC |

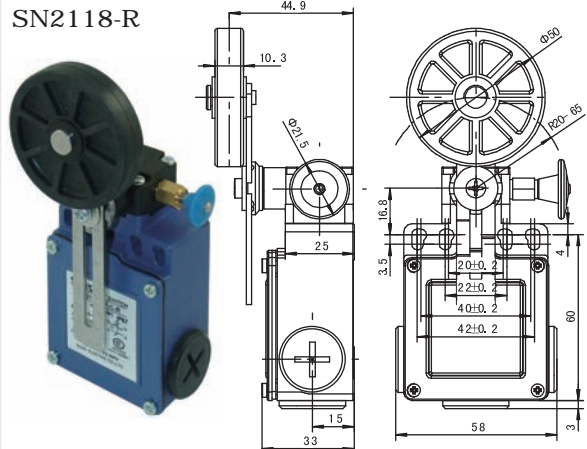
GLOBAL STYLE SAFETY LIMIT SWITCHES (METAL BODIED EN50047 COMPATIBLE) SN2 SERIES (3 - CONDUIT ENTRIES WITH RESET)

SN2114-R



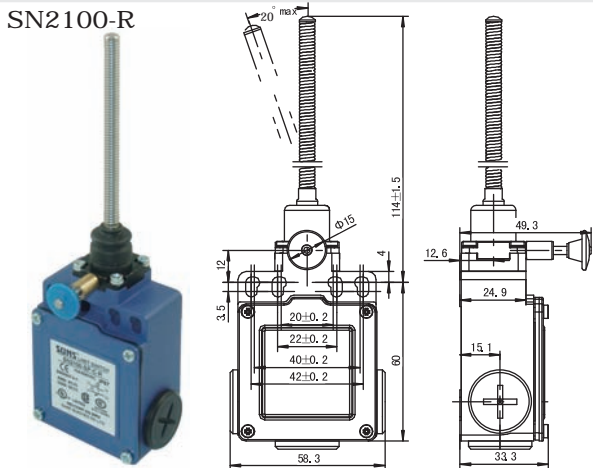
| Order Code | Contact block | | | |
|----------------|---------------|---|-------------|-------------|
| SN2114-SP- _R | SP | ↻ | snap action | 1NO+1NC |
| SN2114-SL- _R | SL | ↻ | slow action | 1NO+1NC BBM |
| SN2114-SL1- _R | SL1 | ↻ | slow action | 1NO+1NC MBB |
| SN2114-SL2- _R | SL2 | ↻ | slow action | 2NC |

SN2118-R



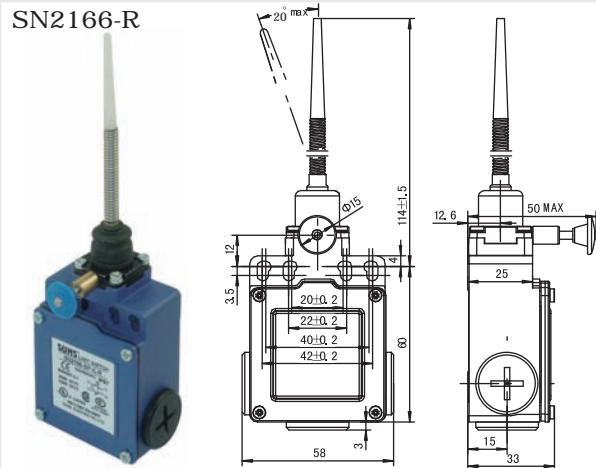
| Order Code | Contact block | | | |
|----------------|---------------|---|-------------|-------------|
| SN2118-SP- _R | SP | ↻ | snap action | 1NO+1NC |
| SN2118-SL- _R | SL | ↻ | slow action | 1NO+1NC BBM |
| SN2118-SL1- _R | SL1 | ↻ | slow action | 1NO+1NC MBB |
| SN2118-SL2- _R | SL2 | ↻ | slow action | 2NC |

SN2100-R



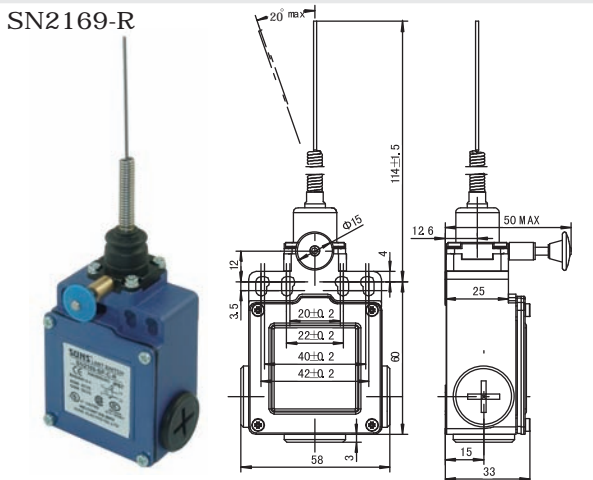
| Order Code | Contact block | | | |
|---------------|---------------|---|-------------|---------|
| SN2100-SP- _R | SP | ↻ | snap action | 1NO+1NC |

SN2166-R



| Order Code | Contact block | | | |
|---------------|---------------|---|-------------|---------|
| SN2166-SP- _R | SP | ↻ | snap action | 1NO+1NC |

SN2169-R



| Order Code | Contact block | | | |
|---------------|---------------|---|-------------|---------|
| SN2169-SP- _R | SP | ↻ | snap action | 1NO+1NC |