

GLOBAL STYLE LIMIT SWITCHES (PLASTIC BODIED EN50047 TYPE)

SND4 SERIES (SINGLE CONDUIT ENTRY)

SND2 SERIES (TWO CONDUIT ENTRIES)



Features

- Glass fiber reinforced plastic body with metal heads
- Easily interchangeable contact block
- Fine adjustment of switching point via adjusting screw
- Galvanically separated contacts
- Screw terminals with self-lifting clamps for easy wiring
- Positive Opening of NC contacts
- 4 x 90° actuator positions
- Cable entry available: M 20, PG13.5 and 1/2"NPT
- Conform to EN 50047 standard

Specifications

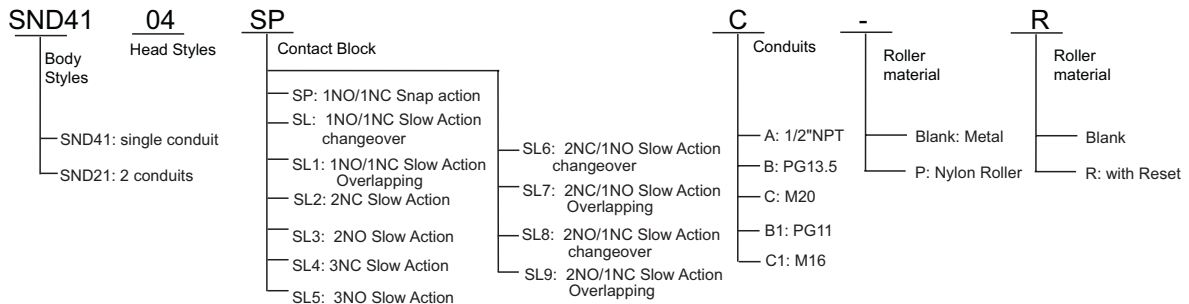
Operating Speed	0.05mm-2m/sec
Operating Frequency	Mechanical: 120ops/min Electrical: 30 ops/min
Insulation Resistance	>100MΩ@500V DC
Contact Resistance	<25mΩ
Rated Current/Voltage	10A/600V AC (EN60947-5-1) AC15 A600 / DC13 Q300
Dielectric Strength	1000VAC for 1 min between current carrying parts 2500VAC for 1 min between non-current carrying parts
Service Life	Mechanically 1.0 x10 ⁷ (operations) Electrically 5 x10 ⁵ (operations)
Operating Temperature	-25~+80°C (-13~176°F)
Humidity	< 95%RH
Weight	150-250g
Degree of Protection	IP65

Definitions of Operating Characteristics

- OF Operating Force
- RF Releasing Force
- OT Overtravel
- TT Total Travel
- PT Pretravel
- MD Movement Differential
- OP Operating Position
- PO Travel to Positive Opening



Selection Guide:



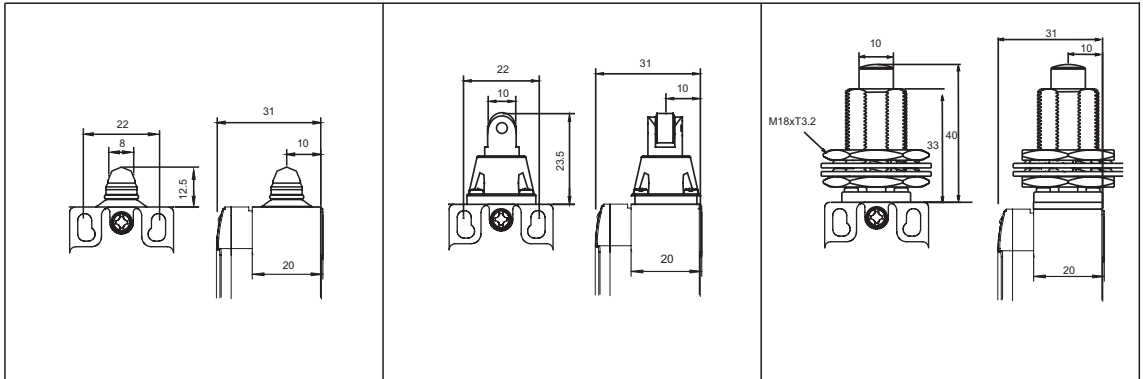
GLOBAL STYLE LIMIT SWITCHES (PLASTIC BODIED EN50047 TYPE)



SND4 series
(single conduit)

SND2 series
(two conduits)

Add suffix:
A: for 1/2NPT
B: for PG13.5
B1: for PG11
C: for M20
C1: for M16

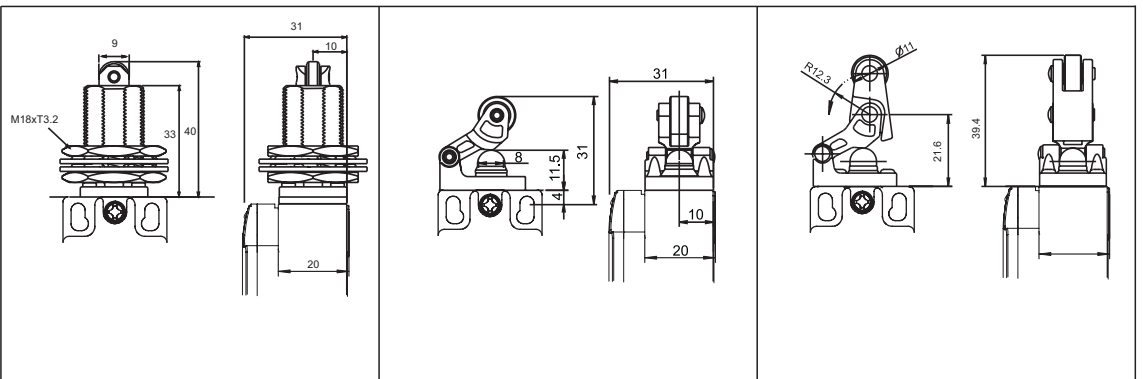


Contact block		Zb						
SP	⊕	snap action	SND4111-SP- SND2111-SP-	1NO+1NC	SND4112-SP- SND2112-SP-	1NO+1NC	SND4131-SP- SND2131-SP-	1NO+1NC
SL	⊕	slow action	SND4111-SL- SND2111-SL-	1NO+1NC BBM	SND4112-SL- SND2112-SL-	1NO+1NC BBM	SND4131-SL- SND2131-SL-	1NO+1NC BBM
SL1	⊕	slow action	SND4111-SL1- SND2111-SL1-	1NO+1NC MBB	SND4112-SL1- SND2112-SL1-	1NO+1NC MBB	SND4131-SL1- SND2131-SL1-	1NO+1NC MBB
SL2	⊕	slow action	SND4111-SL2- SND2111-SL2-	2NC	SND4112-SL2- SND2112-SL2-	2NC	SND4131-SL2- SND2131-SL2-	2NC
SL3		slow action	SND4111-SL3- SND2111-SL3-	2NO	SND4112-SL3- SND2112-SL3-	2NO	SND4131-SL3- SND2131-SL3-	2NO
SL4	⊕	slow action	SND4111-SL4- SND2111-SL4-	3NC	SND4112-SL4- SND2112-SL4-	3NC	SND4131-SL4- SND2131-SL4-	3NC
SL5		slow action	SND4111-SL5- SND2111-SL5-	3NO	SND4112-SL5- SND2112-SL5-	3NO	SND4131-SL5- SND2131-SL5-	3NO
SL6	⊕	slow action	SND4111-SL6- SND2111-SL6-	2NC+1NO BBM	SND4112-SL6- SND2112-SL6-	2NC+1NO BBM	SND4131-SL6- SND2131-SL6-	2NC+1NO BBM
SL7	⊕	slow action	SND4111-SL7- SND2111-SL7-	2NC+1NO MBB	SND4112-SL7- SND2112-SL7-	2NC+1NO MBB	SND4131-SL7- SND2131-SL7-	2NC+1NO MBB
SL8	⊕	slow action	SND4111-SL8- SND2111-SL8-	1NC+2NO BBM	SND4112-SL8- SND2112-SL8-	1NC+2NO BBM	SND4131-SL8- SND2131-SL8-	1NC+2NO BBM
SL9	⊕	slow action	SND4111-SL9- SND2111-SL9-	1NC+2NO MBB	SND4112-SL9- SND2112-SL9-	1NC+2NO MBB	SND4131-SL9- SND2131-SL9-	1NC+2NO MBB

SND4 series
(single conduit)

SND2 series
(two conduits)

Add suffix:
A: for 1/2NPT
B: for PG13.5
B1: for PG11
C: for M20
C1: for M16



Contact block		Zb						
SP	⊕	snap action	SND4132-SP- SND2132-SP-	1NO+1NC	SND4162-SP- SND2162-SP-	1NO+1NC	SND4163-SP- SND2163-SP-	1NO+1NC
SL	⊕	slow action	SND4132-SL- SND2132-SL-	1NO+1NC BBM	SND4162-SL- SND2162-SL-	1NO+1NC BBM	SND4163-SL- SND2163-SL-	1NO+1NC BBM
SL1	⊕	slow action	SND4132-SL1- SND2132-SL1-	1NO+1NC MBB	SND4162-SL1- SND2162-SL1-	1NO+1NC MBB	SND4163-SL1- SND2163-SL1-	1NO+1NC MBB
SL2	⊕	slow action	SND4132-SL2- SND2132-SL2-	2NC	SND4162-SL2- SND2162-SL2-	2NC	SND4163-SL2- SND2163-SL2-	2NC
SL3		slow action	SND4132-SL3- SND2132-SL3-	2NO	SND4162-SL3- SND2162-SL3-	2NO	SND4163-SL3- SND2163-SL3-	2NO
SL4	⊕	slow action	SND4132-SL4- SND2132-SL4-	3NC	SND4162-SL4- SND2162-SL4-	3NC	SND4163-SL4- SND2163-SL4-	3NC
SL5		slow action	SND4132-SL5- SND2132-SL5-	3NO	SND4162-SL5- SND2162-SL5-	3NO	SND4163-SL5- SND2163-SL5-	3NO
SL6	⊕	slow action	SND4132-SL6- SND2132-SL6-	2NC+1NO BBM	SND4162-SL6- SND2162-SL6-	2NC+1NO BBM	SND4163-SL6- SND2163-SL6-	2NC+1NO BBM
SL7	⊕	slow action	SND4132-SL7- SND2132-SL7-	2NC+1NO MBB	SND4162-SL7- SND2162-SL7-	2NC+1NO MBB	SND4163-SL7- SND2163-SL7-	2NC+1NO MBB
SL8	⊕	slow action	SND4132-SL8- SND2132-SL8-	1NC+2NO BBM	SND4162-SL8- SND2162-SL8-	1NC+2NO BBM	SND4163-SL8- SND2163-SL8-	1NC+2NO BBM
SL9	⊕	slow action	SND4132-SL9- SND2132-SL9-	1NC+2NO MBB	SND4162-SL9- SND2162-SL9-	1NC+2NO MBB	SND4163-SL9- SND2163-SL9-	1NC+2NO MBB

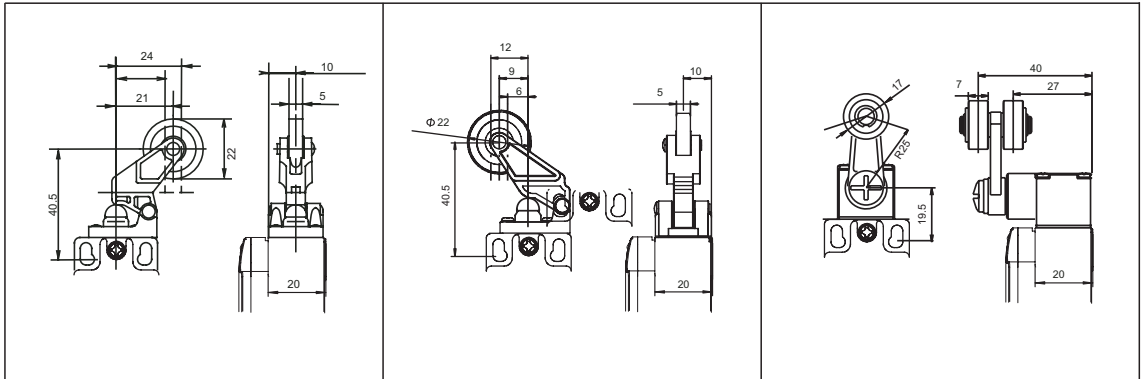
GLOBAL STYLE LIMIT SWITCHES (PLASTIC BODIED EN50047 TYPE)



SND4 series
(single conduit)

SND2 series
(two conduits)

Add suffix:
A: for 1/2NPT
B: for PG13.5
B1: for PG11
C: for M20
C1: for M16

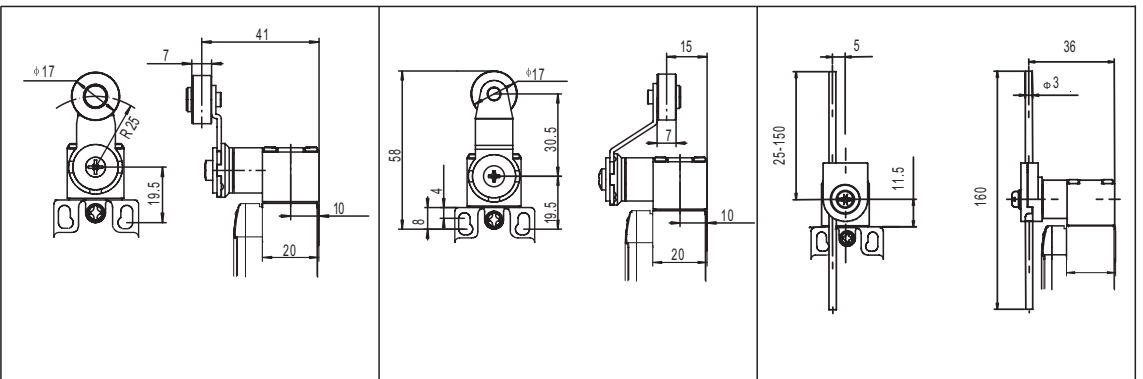


Contact block	Zb							
SP	⊕	snap action	SND4172-SP- _ SND2172-SP- _	1NO+1NC	SND4173-SP- _ SND2173-SP- _	1NO+1NC	SND4104-SP- _ SND2104-SP- _	1NO+1NC
SL	⊕	slow action	SND4172-SL- _ SND2172-SL- _	1NO+1NC BBM	SND4173-SL- _ SND2173-SL- _	1NO+1NC BBM	SND4104-SL- _ SND2104-SL- _	1NO+1NC BBM
SL1	⊕	slow action	SND4172-SL1- _ SND2172-SL1- _	1NO+1NC MBB	SND4173-SL1- _ SND2173-SL1- _	1NO+1NC MBB	SND4104-SL1- _ SND2104-SL1- _	1NO+1NC MBB
SL2	⊕	slow action	SND4172-SL2- _ SND2172-SL2- _	2NC	SND4173-SL2- _ SND2173-SL2- _	2NC	SND4104-SL2- _ SND2104-SL2- _	2NC
SL3		slow action	SND4172-SL3- _ SND2172-SL3- _	2NO	SND4173-SL3- _ SND2173-SL3- _	2NO	SND4104-SL3- _ SND2104-SL3- _	2NO
SL4	⊕	slow action	SND4172-SL4- _ SND2172-SL4- _	3NC	SND4173-SL4- _ SND2173-SL4- _	3NC	SND4104-SL4- _ SND2104-SL4- _	3NC
SL5		slow action	SND4172-SL5- _ SND2172-SL5- _	3NO	SND4173-SL5- _ SND2173-SL5- _	3NO	SND4104-SL5- _ SND2104-SL5- _	3NO
SL6	⊕	slow action	SND4172-SL6- _ SND2172-SL6- _	2NC+1NO BBM	SND4173-SL6- _ SND2173-SL6- _	2NC+1NO BBM	SND4104-SL6- _ SND2104-SL6- _	2NC+1NO BBM
SL7	⊕	slow action	SND4172-SL7- _ SND2172-SL7- _	2NC+1NO MBB	SND4173-SL7- _ SND2173-SL7- _	2NC+1NO MBB	SND4104-SL7- _ SND2104-SL7- _	2NC+1NO MBB
SL8	⊕	slow action	SND4172-SL8- _ SND2172-SL8- _	1NC+2NO BBM	SND4173-SL8- _ SND2173-SL8- _	1NC+2NO BBM	SND4104-SL8- _ SND2104-SL8- _	1NC+2NO BBM
SL9	⊕	slow action	SND4172-SL9- _ SND2172-SL9- _	1NC+2NO MBB	SND4173-SL9- _ SND2173-SL9- _	1NC+2NO MBB	SND4104-SL9- _ SND2104-SL9- _	1NC+2NO MBB

SND4 series
(single conduit)

SND2 series
(two conduits)

Add suffix:
A: for 1/2NPT
B: for PG13.5
B1: for PG11
C: for M20
C1: for M16



Contact block	Zb							
SP	⊕	snap action	SND4104-SP- _M SND2104-SP- _M	1NO+1NC	SND4104-SP- _SM SND2104-SP- _SM	1NO+1NC	SND4107-SP- _ SND2107-SP- _	1NO+1NC
SL	⊕	slow action	SND4104-SL- _M SND2104-SL- _M	1NO+1NC BBM	SND4104-SL- _SM SND2104-SL- _SM	1NO+1NC BBM	SND4107-SL- _ SND2107-SL- _	1NO+1NC BBM
SL1	⊕	slow action	SND4104-SL1- _M SND2104-SL1- _M	1NO+1NC MBB	SND4104-SL1- _SM SND2104-SL1- _SM	1NO+1NC MBB	SND4107-SL1- _ SND2107-SL1- _	1NO+1NC MBB
SL2	⊕	slow action	SND4104-SL2- _M SND2104-SL2- _M	2NC	SND4104-SL2- _SM SND2104-SL2- _SM	2NC	SND4107-SL2- _ SND2107-SL2- _	2NC
SL3		slow action	SND4104-SL3- _M SND2104-SL3- _M	2NO	SND4104-SL3- _SM SND2104-SL3- _SM	2NO	SND4107-SL3- _ SND2107-SL3- _	2NO
SL4	⊕	slow action	SND4104-SL4- _M SND2104-SL4- _M	3NC	SND4104-SL4- _SM SND2104-SL4- _SM	3NC	SND4107-SL4- _ SND2107-SL4- _	3NC
SL5		slow action	SND4104-SL5- _M SND2104-SL5- _M	3NO	SND4104-SL5- _SM SND2104-SL5- _SM	3NO	SND4107-SL5- _ SND2107-SL5- _	3NO
SL6	⊕	slow action	SND4104-SL6- _M SND2104-SL6- _M	2NC+1NO BBM	SND4104-SL6- _SM SND2104-SL6- _SM	2NC+1NO BBM	SND4107-SL6- _ SND2107-SL6- _	2NC+1NO BBM
SL7	⊕	slow action	SND4104-SL7- _M SND2104-SL7- _M	2NC+1NO MBB	SND4104-SL7- _SM SND2104-SL7- _SM	2NC+1NO MBB	SND4107-SL7- _ SND2107-SL7- _	2NC+1NO MBB
SL8	⊕	slow action	SND4104-SL8- _M SND2104-SL8- _M	1NC+2NO BBM	SND4104-SL8- _SM SND2104-SL8- _SM	1NC+2NO BBM	SND4107-SL8- _ SND2107-SL8- _	1NC+2NO BBM
SL9	⊕	slow action	SND4104-SL9- _M SND2104-SL9- _M	1NC+2NO MBB	SND4104-SL9- _SM SND2104-SL9- _SM	1NC+2NO MBB	SND4107-SL9- _ SND2107-SL9- _	1NC+2NO MBB

