

## Terminal Blocks - T series

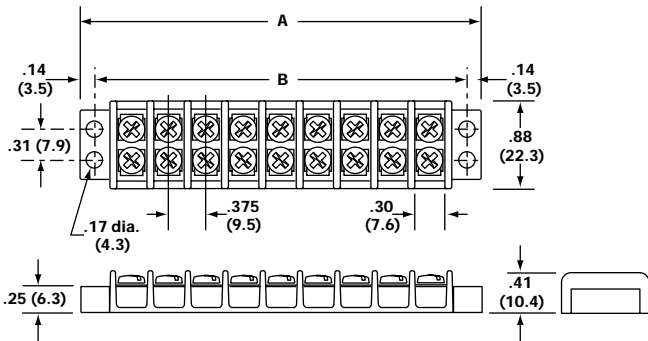
Heavy-duty , corrosion-resistant screws, surface plates and optional hardware  
 Accessory hardware provides a variety of termination options.  
 Available cover helps prevent contact with live terminals

Order Codes:

Series	Poles	Screw Options	Marking	Cover	Hardware Options
TU1	02 to 22	Blank - steel phillslot, zinc plated 00 - screws shipped bulk B - brass phillslot, nickel plated BS - brass Sems phillslot, nickel plated SP - steel Sems phillslot, zinc plated P - steel Sems (P-style) ST - stainless steel, phillslot STR - stainless steel, phillips (recess)	L1 to L9	C	Q1 to Q9 - quick connects J1 to J9 - jumper

### TU100/TG100 Series Terminal Strips 15A/300V

- 9.5mm center spacing
- Accepts wire sizes from 22 through 14 AWG Cu
- #6-32 phillslot, zinc-plated steel terminal screws (Recommended torque: 9 in. - lb.)
- Molded of materials maximum temperature rating  
 TG: thermoplastic (UL Rated 94V-0) 130 C  
 TU: Phenolic 150 C

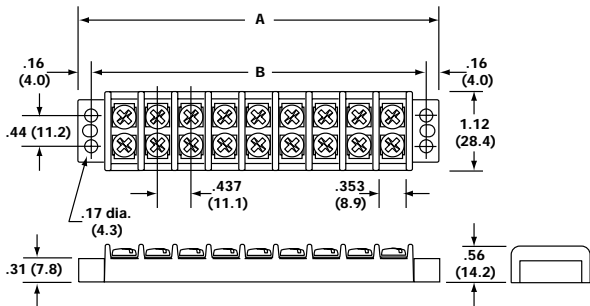


Poles	A	B	Cat. No.	Poles	A	B	Cat. No.
02	1.40	1.12	TU/TG102	13	5.53	5.25	TU113
03	1.78	1.50	TU103	14	5.90	5.62	TU/TG114
04	2.16	1.88	TU/TG104	15	6.28	6.00	TU115
05	2.53	2.25	TU105	16	6.66	6.38	TU/TG116
06	2.90	2.62	TU/TG106	17	7.03	6.75	TU117
07	3.28	3.00	TU107	18	7.40	7.12	TU/TG118
08	3.66	3.38	TU/TG108	19	7.78	7.50	TU119
09	4.03	3.75	TU109	20	8.16	7.88	TU/TG120
10	4.40	4.12	TU/TG110	21	8.53	8.25	TU121
11	4.78	4.50	TU111	22	8.90	8.62	TU/TG122
12	5.16	4.88	TU/TG112				

\* Dimensions in inches. To convert to millimeters, multiply by 25.4.

### TU200/TG200 Series Terminal Blocks 20A/300V

- 11.1mm center spacing
- Accepts wire sizes from 22 through 12 AWG Cu
- #6-32 phillslot, zinc-plated steel terminal screws (Recommended torque: 9 in. - lb.)
- Molded of materials maximum temperature rating  
 TG: thermoplastic (UL Rated 94V-0) 130 C  
 TU: Phenolic 150 C



Poles	A	B	Cat. No.	Poles	A	B	Cat. No.
02	1.63	1.31	TU/TG202	13	6.44	6.12	TU213
03	2.07	1.75	TU203	14	6.87	6.56	TU/TG214
04	2.51	2.18	TU/TG204	15	7.31	7.00	TU215
05	2.94	2.62	TU205	16	7.75	7.43	TU/TG216
06	3.38	3.06	TU/TG206	17	8.19	7.87	TU217
07	3.82	3.50	TU207	18	8.62	8.31	TU/TG218
08	4.25	3.93	TU/TG208	19	9.06	8.75	TU219
09	4.69	4.37	TU209	20	9.50	9.18	TU/TG220
10	5.13	4.81	TU/TG210	21	9.94	9.62	TU221
11	5.57	5.25	TU211	22	10.37	10.06	TU/TG222
12	6.00	5.68	TU/TG212				

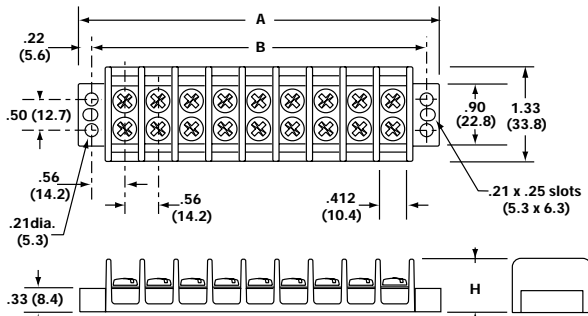
\* Dimensions in inches. To convert to millimeters, multiply by 25.4.

## TU300 (30A/300V)/ TG300 (30A/600V) Series Terminal Strips



- 14.2mm center spacing
- Accepts wire sizes from 22 through 10 AWG Cu
- #8-32 philslot, zinc-plated steel terminal screws (Recommended torque: 16 in. - lb.)
- Molded of materials maximum temperature rating  
 TG: thermoplastic (UL Rated 94V-0) 130 C  
 TU: Phenolic 150 C

Inches (mm)

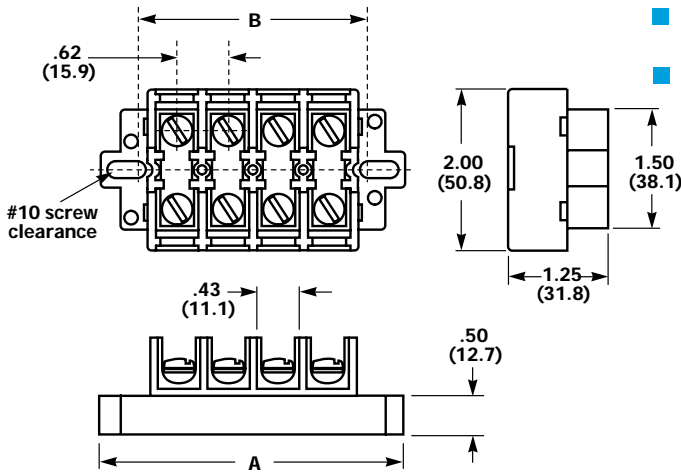


Poles	A	B	Cat. No.	Poles	A	B	Cat. No.
02	2.13	1.69	TU/TG302	13	8.31	7.87	TU313
03	2.69	2.25	TU303	14	8.87	8.44	TU/TG314
04	3.25	2.81	TU/TG304	15	9.43	9.00	TU315
05	3.81	3.37	TU305	16	9.99	9.56	TU/TG316
06	4.37	3.94	TU/TG306	17	10.56	10.12	TU317
07	4.94	4.50	TU307	18	11.12	10.68	TU/TG318
08	5.50	5.06	TU/TG308	19	11.68	11.25	TU319
09	6.06	5.62	TU309	20	12.24	11.81	TU/TG320
10	6.62	6.19	TU/TG310	21	12.80	12.37	TU321
11	7.18	6.75	TU311	22	13.37	12.93	TU/TG322
12	7.75	7.31	TU/TG312				

\* Dimensions in inches. To convert to millimeters, multiply by 25.4.

\* For TU-2XX: H = 0.69 inch (17.5mm)  
 For TG-2XX: H = 0.81 inch (20.5mm)

## TG600 Series Terminal Blocks 60A/600V



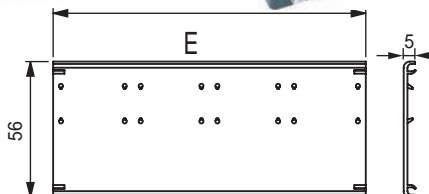
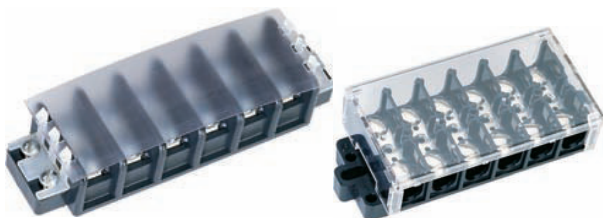
- 15.88mm center spacing
- Accepts wire sizes from 22 through 6 AWG Cu
- #10-32 philslot, zinc-plated steel terminal screws (Recommended torque: 20 in. - lb.)
- Molded of materials maximum temperature rating 105 C thermoplastic (UL Rated 94V-0)

Poles	A	B	Cat. No.
02	2.50	1.62	TG602
04	3.75	2.87	TG604
06	5.00	4.12	TG606
08	6.25	5.37	TG608
10	7.50	6.62	TG610
12	8.75	7.87	TG612

\* Dimensions in inches. To convert to millimeters, multiply by 25.4.  
 \* 60A rating achieved with #6 copper wire crimped to ring terminal.

## Accessories

### Covers



- Helps prevent contact with live terminals

No. of Circuits	For Use With Terminal Strip Series			
	TG-100 Clear Cat. No.	TG-200 Clear Cat. No.	TG-300 Clear Cat. No.	TG-600 Clear Cat. No.
2	TG1C2	TG2C2	TG3C2	—
4	TG1C4	TG2C4	TG3C4	TG6C4
6	TG1C6	TG2C6	TG3C6	TG6C6
8	TG1C8	TG2C8	TG3C8	TG6C8
10	TG1C10	TG2C10	TG3C10	TG6C10
12	TG1C12	TG2C12	TG3C12	TG6C12

## Terminal Block

### Accessories

#### Quick Connects

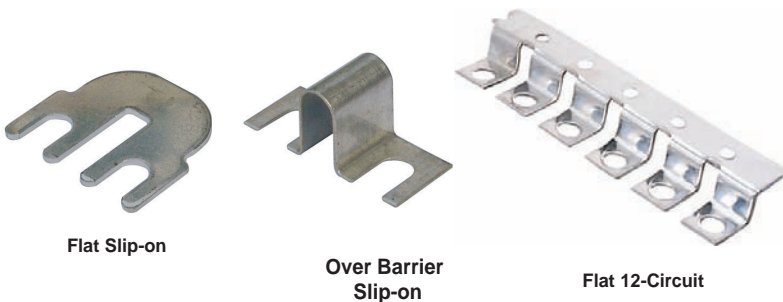


Allows fast, flexible circuit changes

For Use With			
Terminal Strip Series	Tab Size (Inches)	Flat - Non Cat. No.	Flat - Flat Cat. No.
TG100	.187 x .020	TG1Q1	TG1Q2
TG200 TG300	.250 x .031	TG3Q1	TG3Q2

#### Jumpers

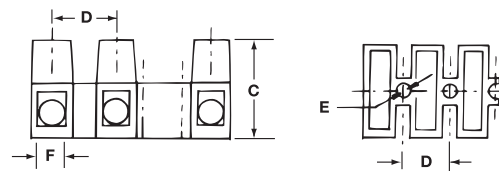
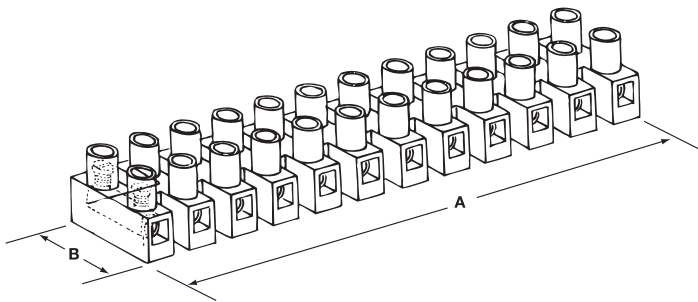
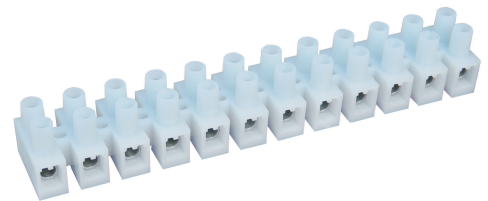
■ Provides easy connection of multiple circuits



For Use With Terminal Strip Series	Center Spacing (Inches)	Flat Slip-on Cat. No.	Over Barrier Slip-on Cat. No.	Flat 12-Circuit Cat. No.
TG100	.375	TG1J2	TG1J1	—
TG200	.437	TG2J2	TG2J1	—
TG300	.562	TG3J2	TG3J1	—
TG600	.625			TG6J6

### TH Series Terminal Block

- Modular 12-circuit design can be cut into smaller sections, or stacked end-to-end
- Rugged nylon construction, UL 94V2
- Insulation Material temperature rating 105°C (221°F)



Electrical Ratings	Wire Range (AWG)	No. of Circuits	Torque in.-lb.	Dimensions (Inches)						Dimensions (mm)						Cat. No.
				A	B	C	D	E	F*	A	B	C	D	E	F**	
20A/300V	22 - 18	12	3.5	3.787	0.669	0.570	0.315	0.114	0.110	96.2	17.0	14.5	8.0	2.9	2.8	TH-1012
30A/300V	22 - 14	12	4.4	4.626	0.795	0.670	0.394	0.142	0.134	117.0	20.2	17.0	10.0	3.6	3.4	TH-2012
35A/300V	22 - 10	12	7.0	5.540	0.937	0.748	0.472	0.154	0.154	140.7	23.8	19.0	12.0	3.9	3.9	TH-3512
50A/300V	20 - 8	12	12.0	6.220	1.008	0.992	0.531	0.173	0.189	158.0	25.6	25.2	13.5	4.4	4.8	TH-5012