

alpheno®

Perfection in a new dimension



alpheno®

Version	alpheno®		
	+	++	+++
Specifications			
Positioning accuracy			██████████
Rigidity		██████████	
Smooth-running		██████████	
Speed capacity			██████████
Power density		██████████	
Max. axial/radial forces		██████████	

al [pha] + pheno [menal] = alpheno[®]

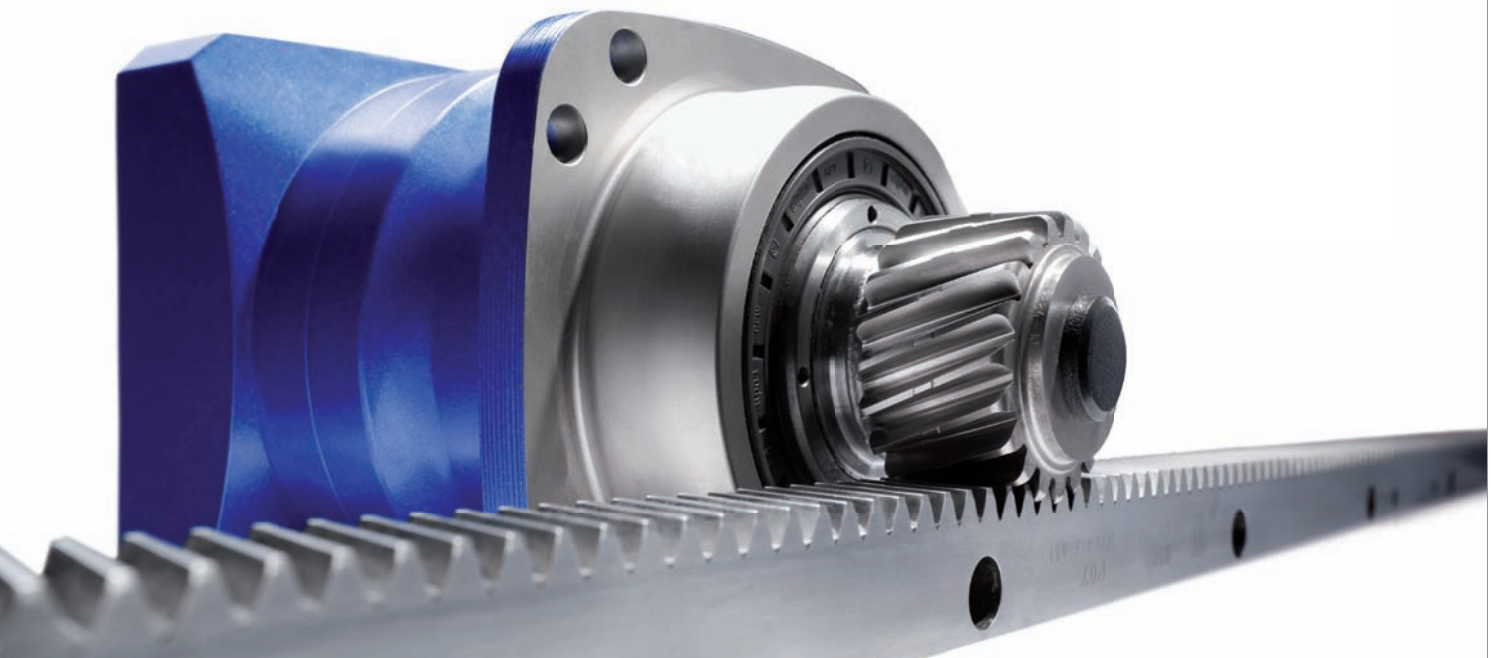
alpheno[®]



Perfect is not yet perfect enough

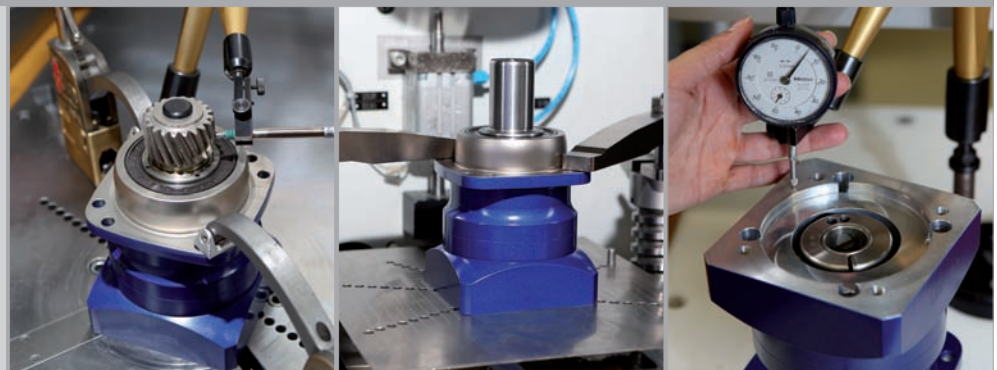
The performance capability of the planetary gear reducer reaches a new dimension with alpheno[®]. While others are still dealing with precision and operating noise, WITTENSTEIN alpha is once again a step ahead. alpheno[®] has already been used in highly challenging applications where the individual

requirements exceed the performance capabilities of the standard product range for several years. In comparison to the SP+, it was possible to increase the power density by up to 140% with alpheno[®] – exceeding all current standards in the market.



Quality & reliability

We define quality as a philosophy to live by. A universal QM system with the latest measuring and testing methods ensures quality. We guarantee quality and reliability of your alpheno[®] with 100% final inspection.

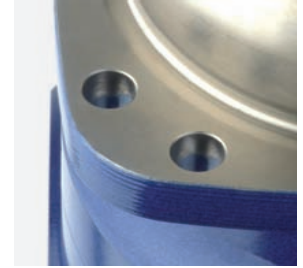


Incomparably powerful



WITTENSTEIN alpha defines a new standard

The alpheno® gear output interface facilitates a higher power transmission when compared to the industry standard which limits the transmitting torques of the gearhead. alpheno® transcends these limitations.

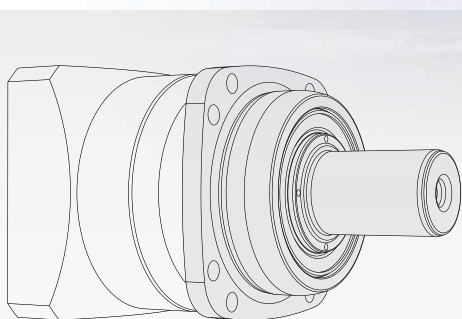
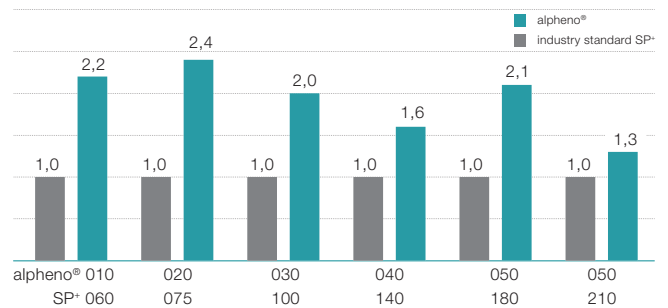


The technical advancement of alpheno® and its increased power can be directly utilized for your applications with the new design of the gear output.

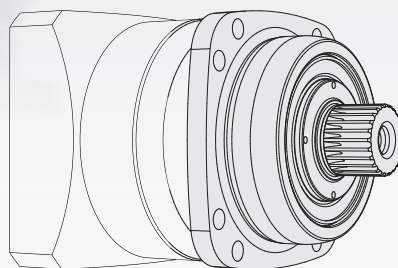
alpheno® convinces with highest power density

We offer you more performance in less space for the most compact drive requirements. This will allow your machine to perform better if specific system solutions are required.

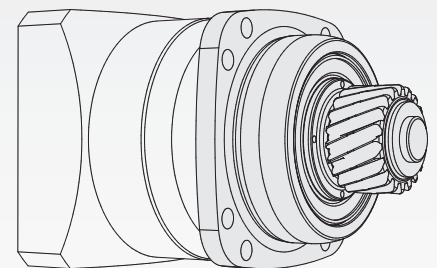
Power density of the industry standard and alpheno®



Smooth shaft



Involute



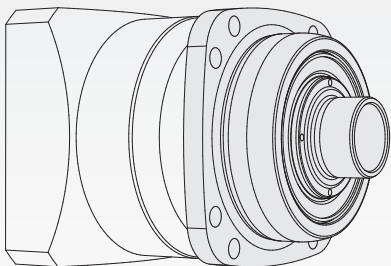
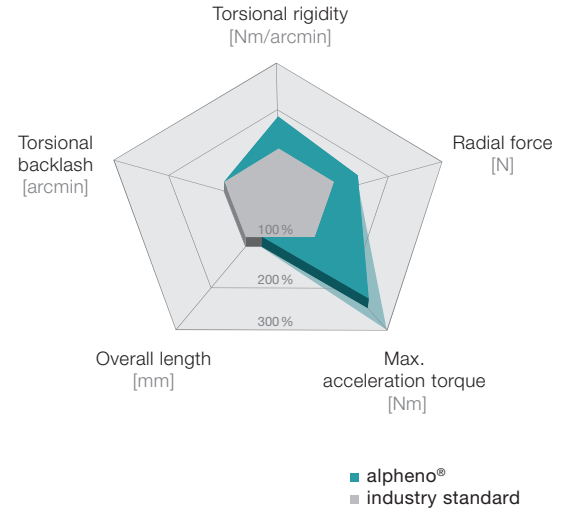
Incl. pinion

Performance data

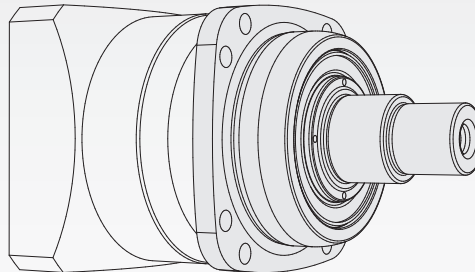
Looking for a solution that is tailored to your needs? We will collaborate with you to develop your customized solution and ensure the ideal design of your drive.

Torsional backlash [arcmin]	< 1
Ratio [-]	3 - 100
Max. acceleration torque [Nm]	2800
alpha peak torque [Nm]	3360
Max. input speed [min ⁻¹]	6000
Efficiency [%]	97

alpheno® in comparison to the industry standard



Slip-on shaft



Customer-specific

Options

Like the SP+ shaft gearhead, alpheno® is also available in a HIGH SPEED® version and with a slip-on shaft at the gear output. A variant with optimized mass inertia guarantees a maximum level of energy efficiency. In combination with the WITTENSTEIN alpha rack-and-pinion portfolio, alpheno® represents an unbeatable drive bearing arrangement in the field of linear motion.