



■ Features :

- Suitable for redundant operation of 24V system
- Installed on DIN Rail TS35 / 7.5 or 15
- Relay contact signal output and LED indicator for input failure alarm
- Cooling by free air convection
- 3 years warranty

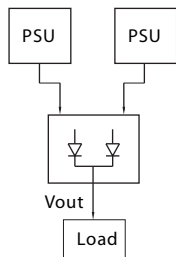


### SPECIFICATION

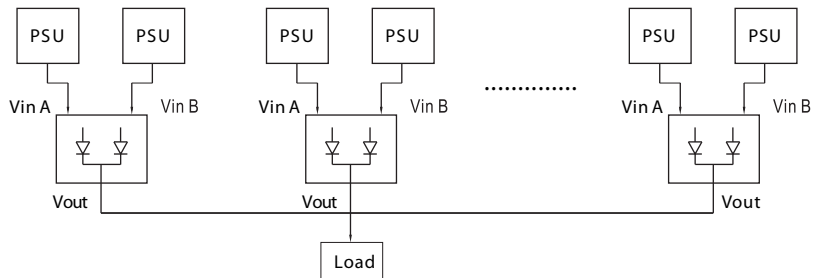
MODEL	PS-RDN20	
OUTPUT	REVERSE VOLTAGE (max.)	30V
	OUTPUT CURRENT (max.)	20A
	VOLTAGE DROP	0.5V
	LED INDICATORS	Two green LEDs indicating each input is "OK or fail"
INPUT	INPUT VOLTAGE RANGE	21 ~ 28V
	NUMBER OF INPUTS	Two
	INPUT CURRENT (max.)	20A per input
FUNCTION	INPUT VOLTAGE ALARM	When input is > 20V(±5%) or < 30V(±5%) relay contacts
	RELAY CONTACT RATING (max.)	30VDC, 1A
ENVIRONMENT	WORKING TEMP.	-20 ~ +70°C
	WORKING HUMIDITY	20 ~ 90% RH non condensing
	STORAGE TEMP., HUMIDITY	-40 ~ +85°C, 10 ~ 95% RH
	VIBRATION	10 ~ 500Hz, 2G 10min./1cycle, Period for 60min.each along X, Y, Z axes ; Mousing: Compliance to IEC60068-2-6
SAFETY & EMC	WITHSTAND VOLTAGE	Terminal-Chassis :0.5KVAC, Relay Contacts-Terminal :0.5KVAC
	ISOLATION RESISTANCE	Terminal-Chassis :>100M Ohms/500VDC 25°C 70%RH
	EMI CONDUCTION & RADIATION	Compliance to EN55022 (CISPR22) Class B
	EMS IMMUNITY	Compliance to EN61000-4-2,3,4,5,6,8, ENV50204, Heavy industry level, criteria A
OTHERS	MTBF	996.8Khrs min. MIL-HDBK-217F (25°C)
	DIMENSION	55.5*125.2*100mm (W*H*D)
	PACKING	0.5Kg; 20pcs/11Kg/1.1CUFT
NOTE	1. All parameters NOT specially mentioned are measured at 24VDC input, rated load and 25°C of ambient temperature.	

#### 1. 1+1 Redundancy

Using 1 more PSU as the redundant unit

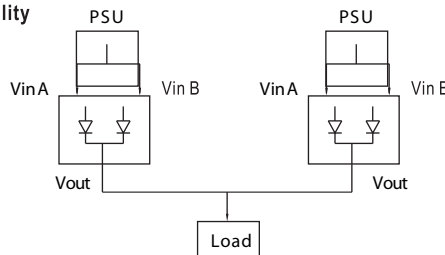


#### 2. 1+N Redundancy: Using more PSUs as the redundant units to increase the reliability



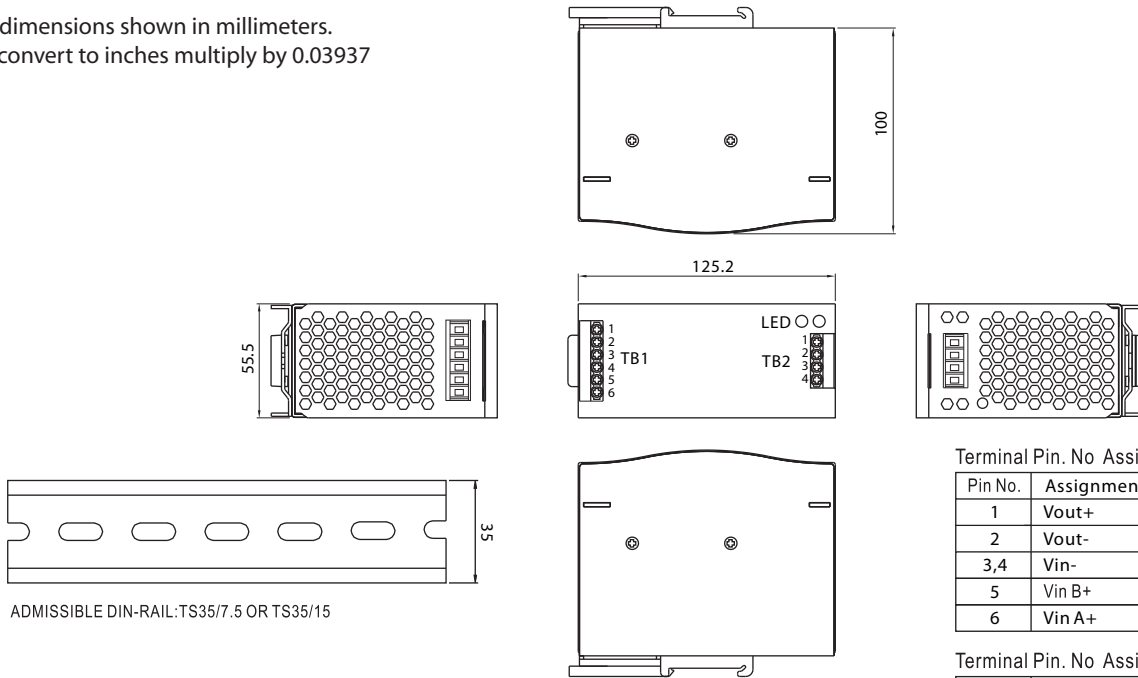
#### 3. Single Use: Connecting only one PSU to one PS-RDN20

to reduce the stress of the diodes and hence increase the reliability

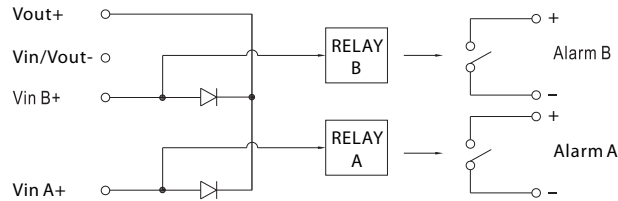


### Mechanical Specification

All dimensions shown in millimeters.  
To convert to inches multiply by 0.03937



### Block Diagram



### Derating Curve

