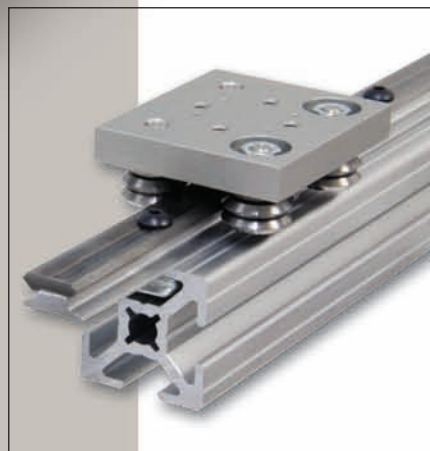


DualVee Motion

Wheel Load Capacity up to 121 lbs.
Speeds up to 5 Meters per Second

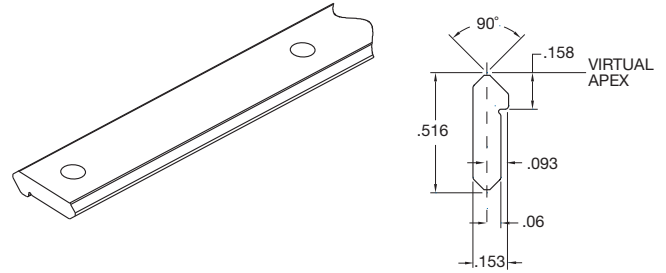
MinVee® Linear Slide System

Built On
DUALVEE
Motion Technology®

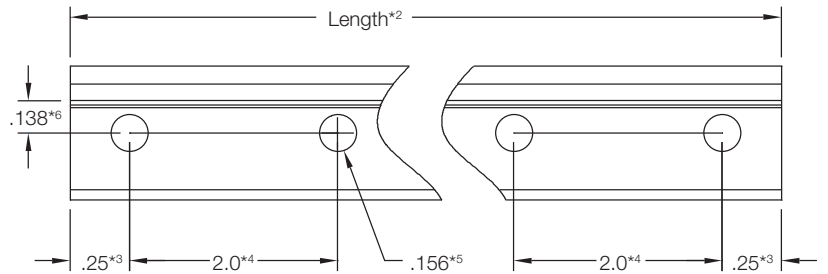


Size 0 MinVee Double Edge Track - Drilled and Undrilled

- Self-aligning mounting shoulder for accurately positioning Vee ways
- Double edge design ensures parallel Vee ways
- Pre-drilled track allow immediate installation, no matching required
- AISI 1045 carbon steel, hardened polished or unhardened as formed, oiled
- Custom coating/plating options: black oxide, electroless and nickel
- Standard pre-drilled track have thru holes



Track Part Number	Track Support Part Number	Number of Holes	Length*2	Vee Way Surface Condition
TD0-650-4	MV0TS-650-4	4	6.50	Hardened, Drilled Rc 53 Minimum
TD0-1250-7	MV0TS-1250-7	7	12.50	
TD0-1850-10	MV0TS-1850-10	10	18.50	
TD0-2450-13	MV0TS-2450-13	13	24.50	
TD0-3050-16	MV0TS-3050-16	16	30.50	
TD0-3650-19	MV0TS-3650-19	19	36.50	
TD0-"Length" ⁹	MV0TS-"Length" ⁹	N/A	Customer Specified	Hardened, Undrilled
TDS0-650-4	MV0TS-650-4	4	6.50	Unhardened, Drilled Rc 22-25
TDS0-1250-7	MV0TS-1250-7	7	12.50	
TDS0-1850-10	MV0TS-1850-10	10	18.50	
TDS0-2450-13	MV0TS-2450-13	13	24.50	
TDS0-3050-16	MV0TS-3050-16	16	30.50	
TDS0-3650-19	MV0TS-3650-19	19	36.50	
TDS0-"Length" ⁹	MV0TS-"Length" ⁹	N/A	Customer Specified	Unhardened, Undrilled



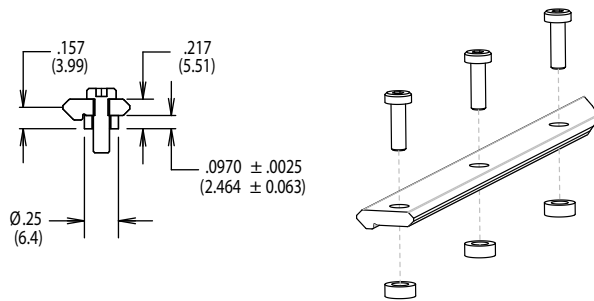
Notes:

1. For non-standard track lengths or other non-standard options, contact Bishop-Wisecarver for quotation.
2. The over-all length tolerance is ± 0.015 inches for drilled track and ± 0.0625 inches for undrilled track.
3. End hole spacing tolerance is ± 0.01 inches.
4. Hole to hole spacing tolerance is ± 0.01 inches.
5. Hole diameter tolerance is ± 0.005 inches.
6. Mounting hole location tolerance is ± 0.005 inches.
7. Maximum single piece track lengths: hardened = 18 feet; unhardened = 20 feet.
8. Track weight is .171 lbs/ft.
9. Specify custom length in inches.

Values are in inches

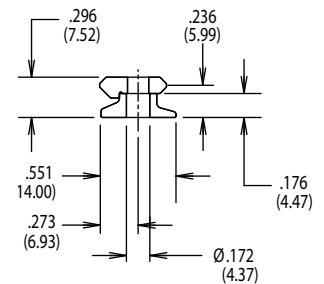
Mounting Spacer

- Part #MV0S18H
- Stainless steel



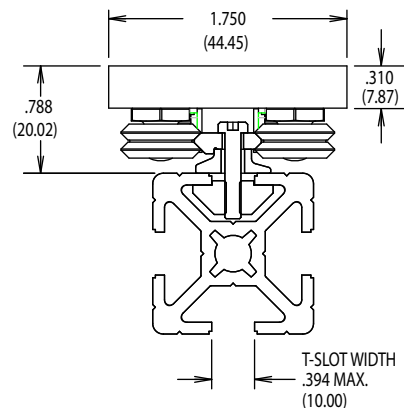
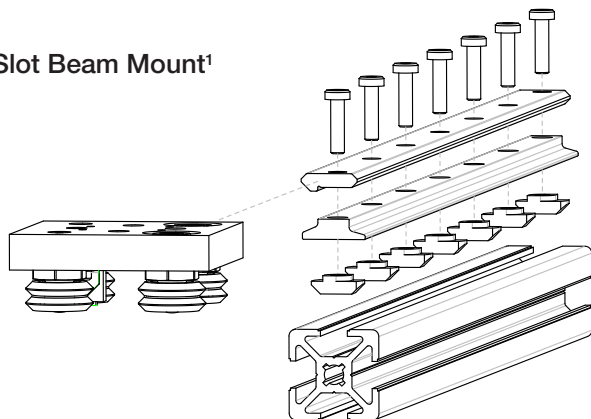
Track Support

- See table for appropriate part number
- Anodized aluminum
- Pre-drilled mounting holes



Mounting Options

T-Slot Beam Mount¹

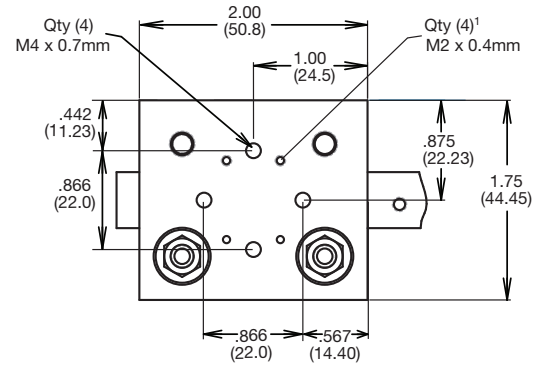


Notes:

1. Mounting hardware and substrate are not included, but can be ordered through Bishop-Wisecarver. Call for quotation.
2. Customer substrate bottom mounting requires track with tapped holes. Contact Bishop-Wisecarver for quotation.

Size 0 MinVee Wheel Plates

- 6061-T6 anodized aluminum carriage with stainless steel lubricator housings and felt lubrication pads
- Two (2) concentric and two (2) eccentric DualVee integral studded wheels
- Carbon steel or polymer over-molded wheels with stainless steel bearings
- Service interval = 100km (62.1 miles at 23° C) and 50% humidity at stated load capacities



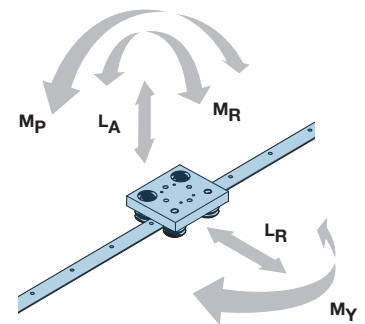
Wheel Plate Specifications - Load capacity based on 100km service life

Carriage Part #	MV0WPA	MV0WPAX	MV0WPAP
Wheel Carriage Type	Steel, Shielded	Steel, Sealed	Polymer, Shielded
Operating Temperature Range	-20° C to 120° C (-4° F to 248° F)	-30° C to 100° C (22° F to 212° F)	-20° C to 120° C (-4° F to 248° F)
Wheel Specifications	AISI 52100 carbon steel, double row angular contact bearing		AISI 440C stainless steel, single row bearing
Axial Working Load (L_A)	540 N (121.4 lbf)		66.7 N (15 lbf)
Radial Working Load (L_R)	490 N (110.2 lbf)		65 N (14.6 lbf)
Pitch Moment (M_P)	7.9 Nm (69.9 lbf-in)		1.4 Nm (12.4 lbf-in)
Yaw Moment (M_Y)	8.6 Nm (76.1 lbf-in)		4.5 Nm (39.8 lbf-in)
Roll Moment (M_R)	6.2 Nm (54.9 lbf-in)		1 Nm (8.8 lbf-in)
Maximum Speed	5 m/s (16.4 ft/s)		1 m/s (3.3 ft/s)
Maximum Acceleration	49 m/s ² (5g)		29.4 m/s ² (3g)
Weight in Grams	84.3		71.7

Mounting Hole Spacing

Notes:

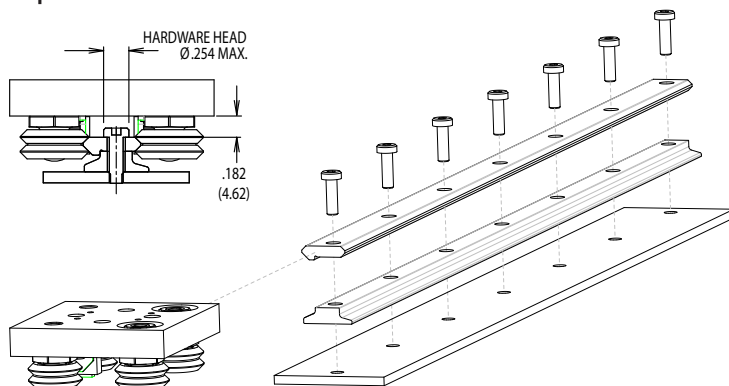
1. Track lubricator mounting holes



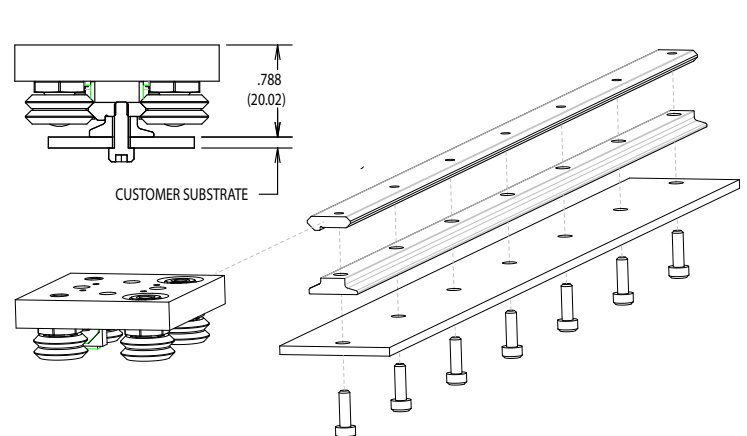
Life Calculation:

$$L_F = \frac{L_R}{L_{R \max}} + \frac{L_A}{L_{A \max}} + \frac{M_P}{M_{P \max}} + \frac{M_Y}{M_{Y \max}} + \frac{M_R}{M_{R \max}} \quad \text{Service Interval (km)} = \frac{100}{.9L_F + .1} \quad @ \quad L_F < 1$$

Top Mount¹



Bottom Mount^{1, 2}



Bishop-Wisecarver Corporation: Manufacturer of the original DualVee® guide wheel and industry leader in guided motion technology, and exclusive North and Central American partner and distributor for HepcoMotion products since 1984.

BISHOPWISECARVER®

Bishop-Wisecarver

DualVee® Guide Wheels
LoPro® Actuated Linear Guidance System
MadeWell® Crown Rollers
MinVee® Linear Slide System
UtiliTrak® Linear Guide



HepcoMotion®

DAPDU2 Double Acting Profile Driven Unit
DLS Driven Linear System
DTS Driven Track System
GV3 Linear Guidance and Transmission System
HDCB Heavy Duty Compact Beam
HDCS Heavy Duty Compact Screw
HDLS Heavy Duty Driven Linear System
HDRT Heavy Duty Ring Slides and Track System
HDS2 Heavy Duty Slide System
MHD Heavy Duty Track Roller Guidance System
MCS Machine Construction System
PDU2 Profile Driven Unit
PDU2M Belt Driven Unit
PRT2 Precision Ring and Track System
PSD80 Screw Driven Linear Actuator
PSD120 Profile Screw Driven Unit
SBD Sealed Belt Drive
Simple-Select®
SL2 Stainless Steel Based Slide System

3D CAD DRAWINGS

Download 3D CAD files for our complete product line at www.bwc.com/3dcad.php.

FOLLOW BISHOP-WISECARVER NEWS & UPDATES

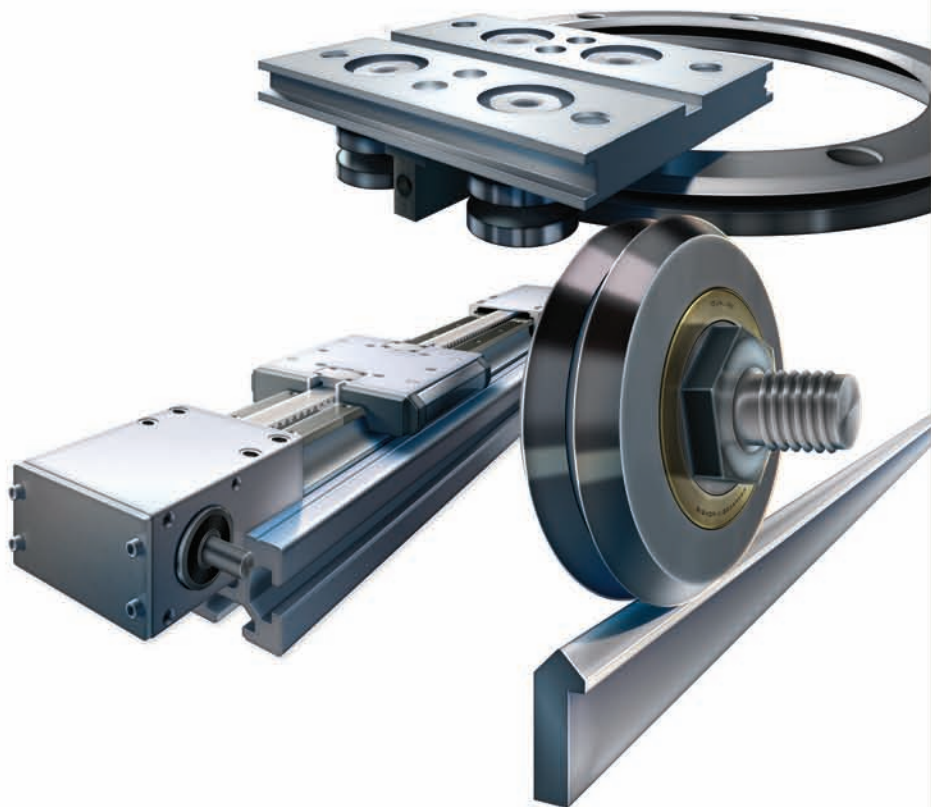
on Blogger <http://bwcnews.blogspot.com/>

PRODUCT ORDERS

Please call Bishop-Wisecarver with your specific application requirements. Our technical staff is available to assist with your custom solution.

Bishop-Wisecarver provides a written three year limited warranty on our Swiss bearings and a written one year limited warranty on all other products assuring the customer that its products conform to published specifications and are free from defects in material or workmanship.

Complete terms and conditions and warranty information is available at www.bwc.com/about_conditions.vp.html



888.580.8272 925.439.8272 www.bwc.com