

Stainless Steel *jaw*

Amazingly Affordable. Unsurpassed Quality.

Lovejoy's Jaw Coupling Now Standard In Stainless Steel.

In applications that require the use of stainless steel components, Lovejoy's SS-type jaw coupling offers a new level of affordability and availability.

- Hubs with finished bores are passivated against rust
- Immediate delivery available in 5 sizes – either rough bore or finished bore and keyway combinations
- Select from bore sizes $\frac{1}{4}$ "(SS075) to $1\text{-}\frac{7}{8}$ "(SS150)
- Interchangeable with all hub sizes standard for the L-line and AL-line products
- Hubs can be used with inserts in 4 different materials: Buna-N (Sox), Urethane, Hytrel and Bronze
- Use with Lovejoy's Jaw-in-Shear to create a completely stainless steel in-shear coupling



Lovejoy[®]

WHERE THE WORLD TURNS FOR COUPLINGS.

For more information on the Lovejoy Stainless Steel Jaw coupling contact us at (630) 852-0500 or visit our web site:

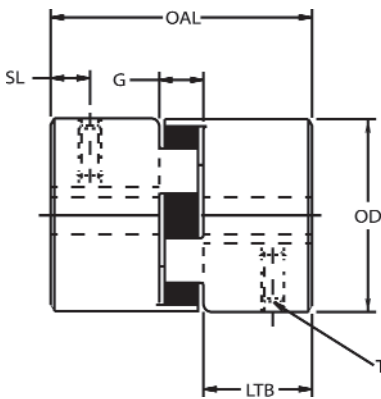
www.lovejoy-inc.com

Stainless Steel *Jaw*

Stainless Steel Coupling Dimensional Data-Inch – Chart 1

| Size | Max Bore | | Outside Diameter | Overall Length | Gap | Length Thru Bore | Hub Diameter | Set Screw Location | Set Screw Size |
|-------|----------|----|------------------|----------------|------|------------------|--------------|--------------------|----------------|
| | in | mm | OD | OAL | G | LTB | | SL | T |
| SS075 | 0.875 | 22 | 1.75 | 2.13 | 0.50 | 0.82 | 1.75 | 0.31 | 1/4-20 |
| SS095 | 1.125 | 28 | 2.11 | 2.51 | 0.52 | 1.00 | 2.11 | 0.44 | 5/16-18 |
| SS100 | 1.375 | 35 | 2.54 | 3.48 | 0.71 | 1.38 | 2.54 | 0.44 | 5/16-18 |
| SS110 | 1.625 | 42 | 3.32 | 4.22 | 0.88 | 1.68 | 3.32 | 0.75 | 3/8-16 |
| SS150 | 1.875 | 48 | 3.75 | 4.50 | 1.00 | 1.75 | 3.75 | 0.75 | 3/8-16 |

SS – Type



List Prices Per Hub

| Size | Rough Stock Bore | Stock Finished Bore* | Non-Stock Finished Bore ⁽¹⁾ |
|-------|------------------|----------------------|--|
| SS075 | \$26.00 | \$50.00 | \$88.00 |
| SS095 | \$35.00 | \$62.00 | \$97.25 |
| SS100 | \$50.00 | \$73.00 | \$112.00 |
| SS110 | \$91.00 | \$137.00 | \$167.15 |
| SS150 | \$133.00 | \$183.00 | \$227.95 |

* see chart 3

⁽¹⁾ inch bores – per AGMA 9002-A86

metric bores – per DIN 7154, H7

DIN 6885, JS9

Stainless Steel Coupling Ratings – Chart 2

| Size | Material | Torque Rating | | HP/100 | Maximum Bore | | Max RPM |
|-------|---------------|---------------|--------|--------|--------------|----|---------|
| | | in-lbs | Nm | | in | mm | |
| SS075 | Spider (Sox) | 90.00 | 10.17 | 0.140 | 0.75 | 19 | 11,000 |
| | Urethane | 135.00 | 15.26 | 0.280 | | | 3,600 |
| | Hytrel | 227.00 | 25.65 | 0.360 | | | 3,600 |
| | Bronze | 227.00 | 25.65 | 0.360 | | | 250 |
| SS095 | Spider (Sox) | 194.00 | 21.92 | 0.310 | 1.12 | 28 | 9,000 |
| | Urethane | 291.00 | 32.90 | 0.465 | | | 3,600 |
| | Urethane(JIS) | 335.00 | 38.00 | 0.530 | | | 9,200 |
| | Hytrel | 561.00 | 63.38 | 0.890 | | | 3,600 |
| | Bronze | 561.00 | 63.38 | 0.890 | | | 250 |
| SS100 | Spider (Sox) | 417.00 | 47.11 | 0.660 | 1.38 | 35 | 7,000 |
| | Urethane | 477.00 | 53.90 | 1.320 | | | 3,600 |
| | Urethane(JIS) | 560.00 | 63.00 | 0.890 | | | 7,700 |
| | Hytrel | 1134.00 | 128.12 | 1.800 | | | 3,600 |
| | Bronze | 1134.00 | 128.12 | 1.800 | | | 250 |
| SS110 | Spider (Sox) | 792.00 | 89.48 | 1.260 | 1.62 | 42 | 5,000 |
| | Urethane | 1188.00 | 134.00 | 1.890 | | | 3,600 |
| | Urethane(JIS) | 1090.00 | 123.00 | 1.730 | | | 5,900 |
| | Hytrel | 2268.00 | 256.25 | 3.600 | | | 5,000 |
| | Bronze | 2268.00 | 256.25 | 3.600 | | | 250 |
| SS150 | Spider (Sox) | 1240.00 | 140.10 | 2.000 | 1.88 | 48 | 5,000 |
| | Urethane | 1860.00 | 210.00 | 3.000 | | | 3,600 |
| | Urethane(JIS) | 1810.00 | 205.00 | 2.870 | | | 5,200 |
| | Hytrel | 3708.00 | 418.95 | 5.900 | | | 5,000 |
| | Bronze | 3708.00 | 418.95 | 5.900 | | | 250 |

Stainless Steel Hub UPC Part Numbers – Chart 3

Prefix is 685144 –

| Size | RSB* | 1/4 | 1/2 | 5/8 | 3/4 | 7/8 | 1" | 1-1/8 | 1-3/8 |
|-------|-------|-------|-------|-------|-------|-------|-------|-------|-------|
| SS075 | 70001 | 70006 | 70007 | 70008 | 70009 | 70010 | - | - | - |
| SS095 | 70002 | 70011 | 70011 | 70012 | 70013 | 70014 | 70015 | 70016 | - |
| SS100 | 70003 | - | - | - | 70017 | 70018 | 70019 | 70020 | 70022 |

| Size | RSB* | 1" | 1-1/8 | 1-3/8 | 1-1/2 | 1-5/8 | 1-3/4 | 1-7/8 |
|-------|-------|-------|-------|-------|-------|-------|-------|-------|
| SS110 | 70004 | 70023 | 70024 | 70026 | 70027 | 70028 | - | - |
| SS150 | 70005 | 70029 | 70030 | 70032 | 70033 | 70034 | 70035 | 70036 |

*Rough bore must be passivated after re boring to prevent rust.

For more information on the Lovejoy Stainless Steel Jaw coupling contact us at (630) 852-0500 or visit our web site

www.lovejoy-inc.com



Item # 685144-70664 12/00