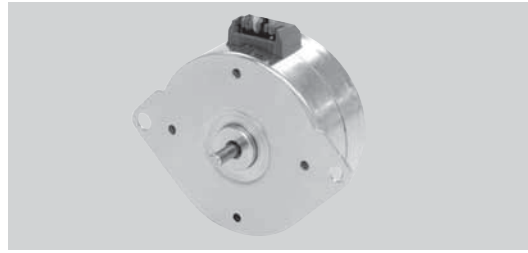


42P024L & 42P048L & 42P096L & 42P100L

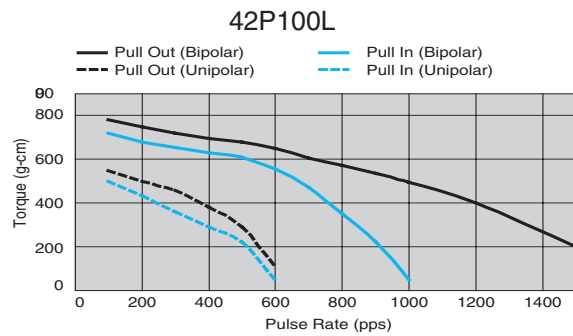
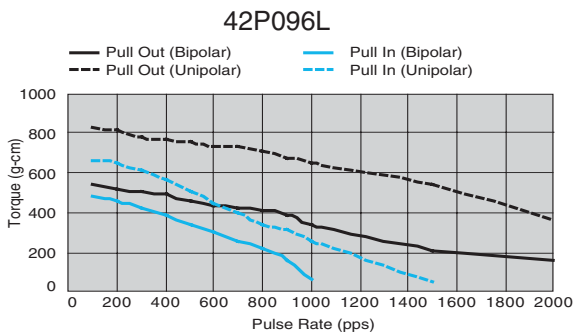
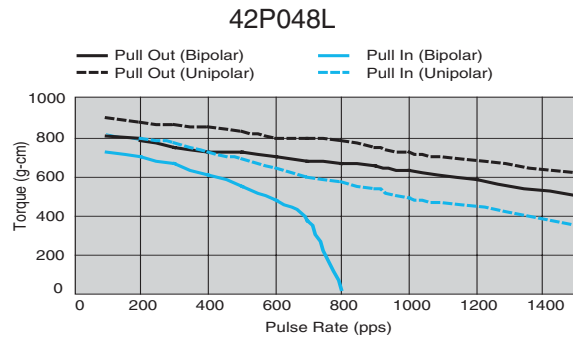
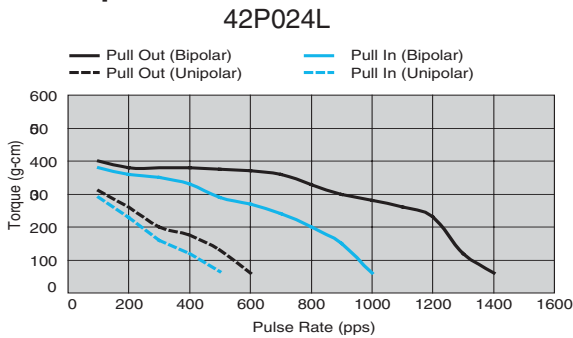
- Diameter: $\varnothing 42\text{mm}$
- Height: 21.3mm
- Step Angle: 15° , 7.5° , 3.75° , 3.6°



Typical Characteristics

Model Name	42P024L		42P048L		42P096L		42P100L	
Step Angle	15°		7.5°		3.75°		3.6°	
Drive Method	2-2 Phase		2-2 Phase		2-2 Phase		2-2 Phase	
Drive Circuit	Bipolar	Unipolar	Bipolar	Unipolar	Bipolar	Unipolar	Bipolar	Unipolar
Drive Voltage	12 V	12 V	24 V	24 V	24 V	36 V	24 V	24 V
Current/Phase	0.5 A		0.8 A	0.65 A	0.5 A	0.5 A	0.5 A	
Coil Resistance/Phase	5 Ω	50 Ω	3 Ω	10 Ω	3 Ω	12 Ω	8 Ω	100 Ω
Holding Torque (reference)	500 g-cm	400 g-cm	950 g-cm	1080 g-cm	630 g-cm	1000 g-cm	900 g-cm	820 g-cm

Torque Characteristics



Typical Outline

