

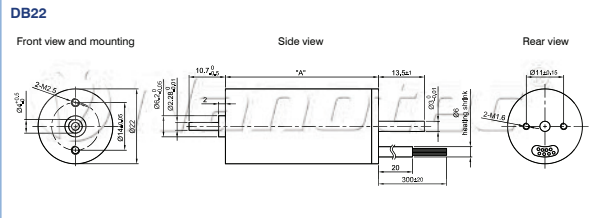
## Brushless DC motors - 3.8 W to 16 W



### Option



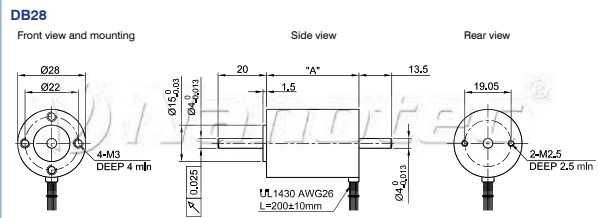
### Dimension image (mm)



### Pin configuration DB22

DB22	Color	Function
Motor	Red	U
	Brown	V
	Black	W
	Blue	+5 V
	Green	GND
Hall	Red	H1
	Yellow	H2
	White	H3
	Brown	H3

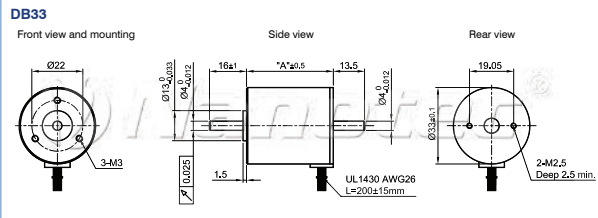
### Dimension image (mm)



### Pin configuration DB28

DB28	Color	Function
Motor	Green	U
	Red	V
	Black	W
	Yellow	+5 V
	White	GND
Hall	Blue	H1
	Orange	H2
	Brown	H3
	Brown	H3

### Dimension image (mm)



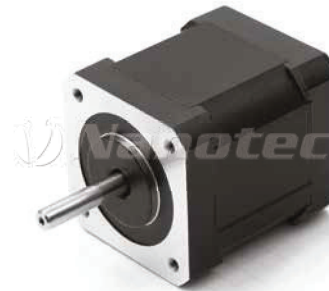
### Pin configuration DB33

DB33	Color	Function
Motor	Green	U
	Red	V
	Black	W
	Yellow	+5 V
	Blue	H1
Hall	Orange	H2
	Brown	H3
	Brown	H3
	White	GND

Available versions (others on request)										
Type	Nom. output W	Nom./peak torque Ncm	Nom./peak current A	Nom. voltage/speed V/rpm	Torque Constant Ncm/A	Resistance ohm/winding	Inductance mH/winding	Rotor inertia torque gcm <sup>2</sup>	Weight kg	Length "A" mm
DB22M01	3,8	0,8 / 2,1	0,265 / 1,1	24 / 4800	3,02	23,0	6,2	0,66	0,075	45
DB22L02	7,7	2,2 / 5,0	0,62 / 1,5	24 / 3500	3,55	11,80	4,2	1,32	0,120	68
DB28S01	6,0	0,5/1,5	0,51 / 2,5	15 / 8000	1,37	8,20	2,3	2,35	0,080	28
DB28M01	14,0	1,4 / 4,2	0,88 / 2,8	24 / 10000	1,80	4,63	1,6	2,12	0,082	38
DB28L01	16,0	5,0 / 15,0	1,0 / 3,0	24 / 3700	5,00	4,20	2,2	5,98	0,280	77
DB33S01	7,0	2,2 / 6,6	0,56 / 1,4	24 / 3000	4,80	12,40	7,0	2,94	0,115	38

## Brushless DC motors - 30 W to 150 W

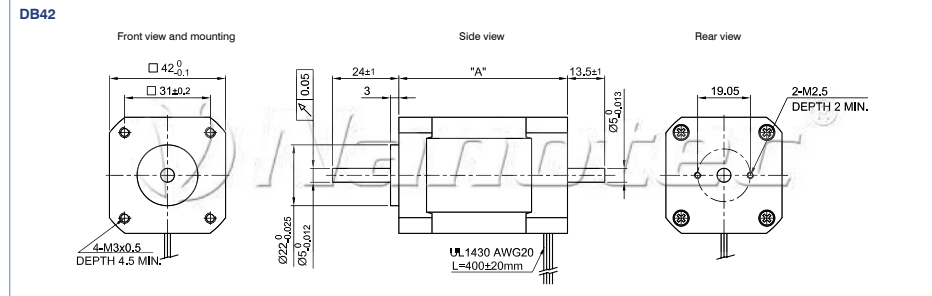
### Option



### Pin configuration DB42

DB42	Color	Function
Motor	Yellow	U
	Red	V
	Black	W
	Red	+5 V
	Black	GND
Hall	Blue	H1
	White	H2
	Green	H3

### Dimension image (mm)



Available versions (others on request)										
Type	Nom. output W	Nom./peak torque Ncm	Nom./peak current A	Nom. voltage/speed V/rpm	Torque Constant Ncm/A	Resistance ohm/winding	Inductance mH/winding	Rotor inertia torque gcm <sup>2</sup>	Weight kg	Length "A" mm
DB42S01	30,0	5 / 15	0,88 / 2,63	48 / 6000	5,70	3,50	5,80	24	0,25	41
DB42S02	40,0	5 / 30	3,57 / 10,78	17 / 8000	1,40	0,20	0,26	24	0,25	41
DB42S03	26,0	6,25 / 19	1,79 / 5,4	24 / 4000	3,50	1,50	2,10	24	0,25	41
DB42M01	70,0	11 / 30	2,12 / 5,77	48 / 6000	5,20	1,30	2,60	48	0,45	61
DB42M02	60,0	7 / 21	1,83 / 4,88	48 / 8500	4,30	0,95	1,80	48	0,45	61
DB42M03	52,5	12,5 / 38	3,47 / 10,6	24 / 4000	3,60	0,80	1,20	48	0,45	61
DB42L01	77,5	18 / 56	5,14 / 15,5	24 / 4000	3,60	0,55	0,80	72	0,65	81
DB42C01	150,0	25 / 75	4,63 / 13,89	48 / 6000	5,40	0,68	1,21	96	0,75	100
DB42C02	140,0	10 / 30	3,57 / 10,71	48 / 14000	2,80	0,16	0,32	96	0,75	100
DB42C03	105,0	25 / 75	6,85 / 20	24 / 4000	3,76	0,30	0,50	96	0,75	100

## Brushless DC motors - 84 W to 220 W

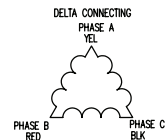


### Option

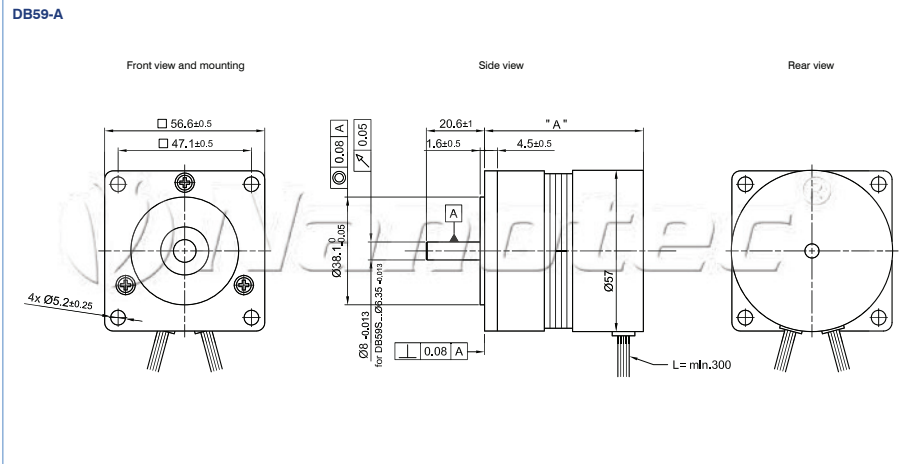


### Pin configuration DB59

DB59	Color	Function
Motor	Yellow	U
	Red	V
	Black	W
Hall	Red	+5 V
	Black	GND
	Blue	H1
	White	H2
	Green	H3



### Dimension image (mm)



### Available versions (others on request)

Type	Nom. output W	Nom. peak torque Ncm	Nom. peak current A	Nom. voltage/speed V/rpm	Torque Constant Ncm/A	Resistance ohm/winding	Inductance mH/winding	Rotor inertia torque gcm <sup>2</sup>	Weight kg	Length "A" mm
DB59S024035	84	23 / 69	5 / 15	24 / 3500	4,5	0,57	0,63	75	0,52	56,1
DB59M024035	135	37 / 111	8 / 24	24 / 3500	4,6	0,24	0,29	105	0,65	71,1
DB59L024035	172	47 / 141	9,4 / 28	24 / 3500	5	0,22	0,29	119	0,72	76,1
DB59C024035	220	60 / 180	13,6 / 40	24 / 3500	4,4	0,135	0,2	173	0,95	96,1

## Brushless DC motors - 220 W to 660 W

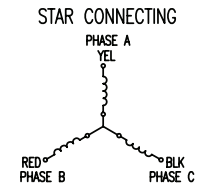


### Option



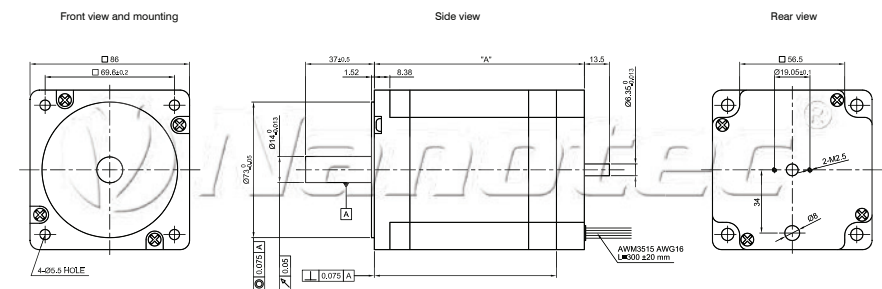
### Pin configuration DB87

DB87	Color	Function
Motor	Yellow	U
	Red	V
	Black	W
Hall	Red	+5 V
	Blue	H1
	White	H2
	Green	H3
	Black	GND



### Dimension image (mm)

#### DB87 - sizes S, M, L



### Available versions (others on request)

Type	Nom. output W	Nom. peak torque Ncm	Nom. peak current A	Nom. voltage/speed V/rpm	Torque Constant Ncm/A	Resistance ohm/winding	Inductance mH/winding	Rotor inertia torque gcm <sup>2</sup>	Weight kg	Length "A" mm
DB87S01-S	220	70 / 201	6,25 / 17,95	48 / 3000	11,20	0,18	0,35	800	1,85	86
DB87M01-S	440	140 / 420	10,77 / 32,31	48 / 3000	13,00	0,07	0,53	1600	2,60	113
DB87L01-S	660	210 / 630	17,95 / 53,85	48 / 3000	11,70	0,07	0,10	2400	4,00	140