

Note: dashed lines indicate dimensions for rack mount handles.

Feature Summary:

- 1 to 8 axes of motor drive
- Integrated Galil motion controller
- Ethernet or RS-232 interface
- Drive options for servo and stepper motors
- 48 & 75 VDC motor supply option
- Integrated motor power control system
- Compatible with all Primatics positioning stages as well as 3rd party motors and stages
- Easy to program with support for DOS, Linux and all versions or Windows
- 110 or 220 VAC, 50/60 Hz input

Overview

The Primatics MDC1800 is a highly integrated multi-axis motion control system in a 6U tall chassis. A Galil high performance motion controller is embedded, offering advanced features such as PID compensation with velocity and acceleration feed-forward, program memory with multitasking for simultaneously running up to eight programs, and uncommitted I/O for synchronizing motion with external events. Modes of motion including point-to-point positioning, jogging, linear and circular interpolation, contouring, electric gearing and ECAM. The MDC1800 uses a simple, English-like command language which makes it very easy to program. Communication drivers are available for DOS, Linux and all current Windows operating systems. RS232 & Ethernet 10-base-T are standard communication interfaces.

Drives

Each drive is a plug-in card allowing each axis to be configured for servo or step motors. All power supplies, wiring and safety circuits are included.

Accessories

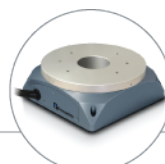
Many cable assemblies are available for connecting the MDC1800 to any Primatics positioning stage. Also available are cables for 3rd party products.

For more information and a complete datasheet, go to www.primatics.com

Performance Specifications	MDC1800
Number of Motion Axis	1 to 8
Motor compatibility	Brush or brushless servo, stepper
Motion Controller	Galil 21x3 Series
Motor Voltage (VDC)	48 or 75VDC
Continuous Output Power (watts)	1000W
Peak Output Power (watts)	1500W
Dimensions (H x W x D) (mm)	266.7 x 449.3 x 449.3
Operating Temperature (deg C)	0 to 45
Storage Temperature (deg C)	0 to 75
Weight (kg)	30



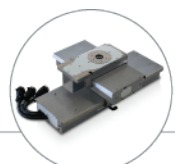
Linear Positioning



Rotary Positioning



Motion Controls



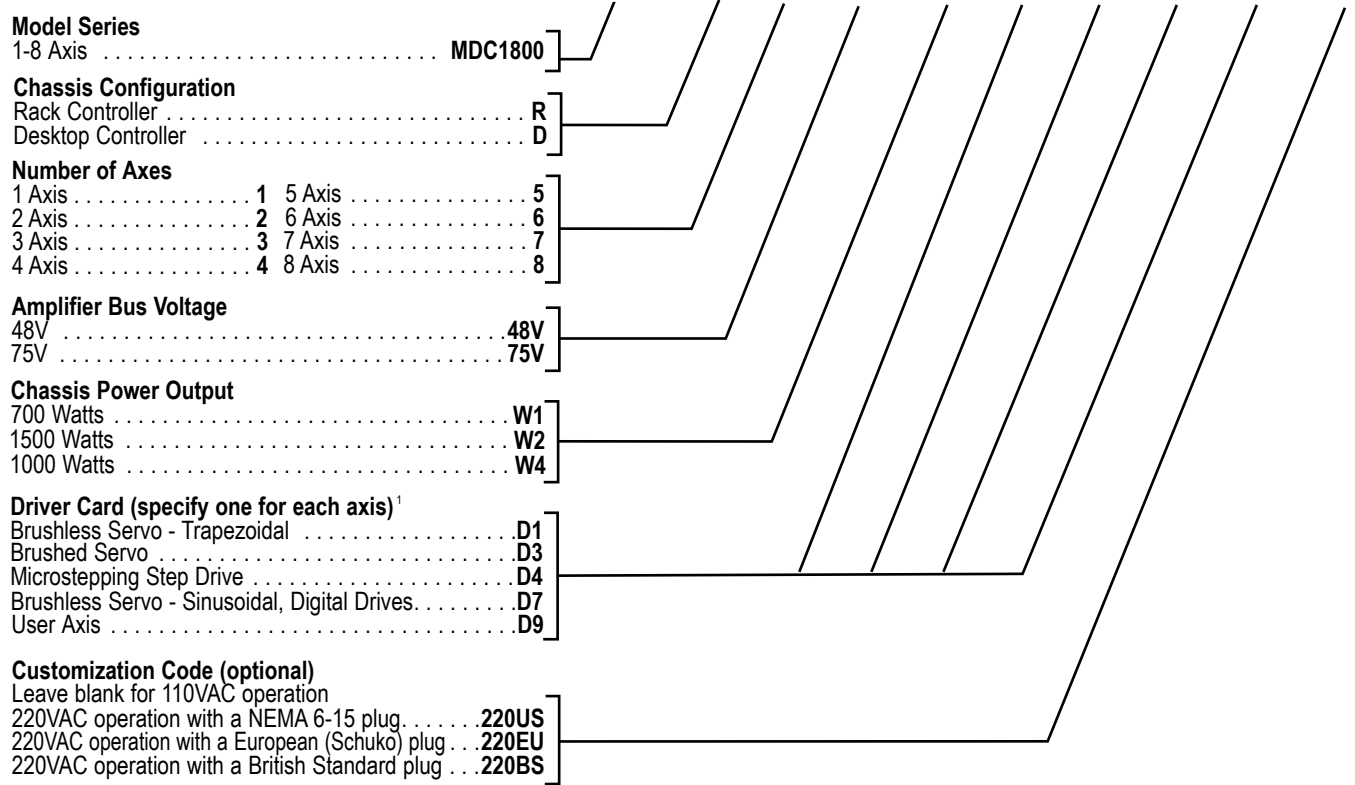
OEM Solutions

MODEL NUMBER CONFIGURATION

OPTIONS :

SAMPLE MODEL NUMBER :

MDC1800 R 4 -48V W2 -D1 -D3 -D3 -D4 -XXXX



Other codes assigned by factory.

¹ The Drive Options are based on the following:
D1 - Trap drive, 6A continuous, 12A peak, 20-85V
D3 - Trap drive configured for brush operations, 6A continuous, 12A peak, 20-85V
D4 - Step drive, 5A RMS/7A peak, 24-75V
D7 - Digital sinusoidal drive, 3A continuous, 9A peak, 20-85V
D9 - User axis

