

Feature Summary:

- Multi-axis servo motor drive, 1-4 axes
- Integrated interface for National Instruments motion controllers
- Drive option for 3A or 6A continuous current
- Brush or brushless servo motors
- Integrated 675 Watt motor power supplies
- Operates from 110 or 220 VAC
- External Enable loop
- Many different cable options

Overview

The Primatics MDM2100 is a multi-axis servo motor drive system with an integrated interface to any National Instruments motion controller. A single cable connects the MDM2100 to a NI card.

Drive Options

The MDM2100 is a higher power alternative to the NI MID-765X, making it suitable for larger motors. It is available in 1, 2, 3 or 4 axis configurations, allowing the user to choose the exact number of axes required in the application.

Connectors and Cables

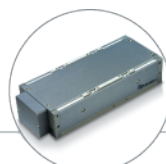
The MDM2100 connects to any NI controller with a single SHC68-C68-S cable from National Instruments. All axis signal connections are made through a robust circular connector for each axis. Cable assemblies are available for use with any Primatics servo motor stage as well as many third party components.

Enable Loop

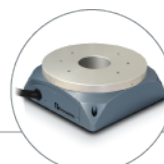
An external ENABLE LOOP allows easy integration into a machine safety system.

For more information and a complete datasheet, go to www.primatics.com

| Performance Specifications | MDM2100 | | | |
|-------------------------------|----------------------|--------|-----------|-----------|
| Number of Motion Axes | 1-4 | | | |
| Controller Compatibility | National Instruments | | | |
| Dimensions (H x W x D) (mm) | 85.7 x 304.8 x 368.3 | | | |
| Operating Voltage | 110 VAC or 220 VAC | | | |
| Motor Voltage | 48 or 70 VDC | | | |
| Motor Current | 3 or 5 A | | | |
| Drive Type | D1 | D2 | D3 | D4 |
| Motor Type | Brush | Brush | Brushless | Brushless |
| Continuous / Peak Current (A) | 3 / 6 | 6 / 12 | 3 / 6 | 6 / 12 |
| Maximum Voltage (V) | 60 | 80 | 60 | 80 |



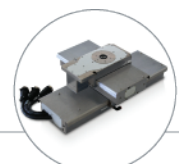
Linear Positioning



Rotary Positioning



Motion Controls



OEM Solutions

MODEL NUMBER CONFIGURATION

OPTIONS :

SAMPLE MODEL NUMBER :

MDM2100D -2 -48VW1 -C4 -D1 -D3 -XXXX

- Model Series**
Desktop Servo Motor Controller MDM2100D]
- Number of Axes**
- 1 Axis 1]
- 2 Axes 2]
- 3 Axes 3]
- 4 Axes 4]
- Power Supply**¹
- 48V, 625W 48VW1]
- 70V, 625W 70VW1]
- Motion Control Interface**
- NI-7344 C4]
- Drive Type (configure one per axis)**
- Brush, 3A cont / 6A peak, 60V Max D1]
- Brush, 6A cont / 12A peak, 80V Max D2]
- Brushless, 3A cont / 6A peak, 60V Max D3]
- Brushless, 6A cont / 12A peak, 80V Max D4]
- Customization Code (optional)**
- Leave blank for 110VAC operation
- 220VAC operation with a NEMA 6-15 plug 220US]
- 220VAC operation with a European (Schuko) plug . . . 220EU]
- 220VAC operation with a British Standard plug . . . 220BS]
- Other codes assigned by factory.

¹ Other voltages available upon request.

