

Feature Summary:

- 300mm of X & Y motion
- Loads up to 75 kg
- 0.1, 0.5 & 1 micron resolution linear encoders
- Single or dual linear motors per axis
- Straight, flat motion ideal for inspection
- Open frame configuration allows access to top and bottom of payload
- Advanced cable management system combines all signals into two cables extending from the bottom axis.
- Error mapped accuracy option
- Class 10 cleanroom option

Overview

Primatics POF115 Series open frame X, Y stages are ideal for precision inspection and assembly applications. With its large central aperture, it affords top and bottom access to the payload.

Higher Performance

Open frame stages are most often used in applications requiring very accurate, flat motion. To achieve these requirements, the POF115 eliminates all empty space between the top and bottom of the positioner, minimizing the overall height & tolerance stack without sacrificing stiffness & load capacity. It utilizes precision linear guide bearings ideal for fast, repetitive motion, and a dual linear encoder option ensures reduced abbe errors.

Cleaner Design

Our unique Prima-Flex™ cable management system eliminates the necessity of external cable carriers on the POF115. All signals for both axes are terminated into two high flex cables that exit the motor end of the bottom stage.

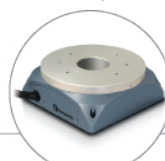
For more information and a complete datasheet, go to www.primatics.com

Performance Specification	POF115-300 Single Side Drive	POF115-300 Dual Side Drive
Travel (mm)	300 x 300	
Life at Listed Specifications x 50 km	100	
Positional Accuracy w/ Linear Encoder (µm) ¹	+/- 15	+/- 10
Error Mapped Accuracy w/ E4 Linear Encoder (µm)	+/- 1.5	+/- 1.0
Positional Repeatability w/ Linear Encoder [1, 0.5, 0.1 µm resolution] ¹	+/- 2, +/- 1.5, +/- 0.75	+/- 1, +/- 0.75, +/- 0.5
Straightness of Travel (µm) over Total Table Travel ¹	+/- 5	
Flatness of Travel (µm) over Total Table Travel ¹	+/- 5	
Max Speed (mm/s) ²	300	
Direct Loading Capacity (kg)	50	75
Minimum Resolution w/ Linear Encoder (µm)	0.1	
Orthogonality (arc-seconds)	15	
Weight (kg)	30	40

¹ Measured 50mm above center of carriage ² Max speed dependent on load and encoder resolution All specifications subject to change w/o notice.



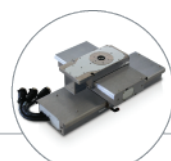
Linear Positioning



Rotary Positioning



Motion Controls

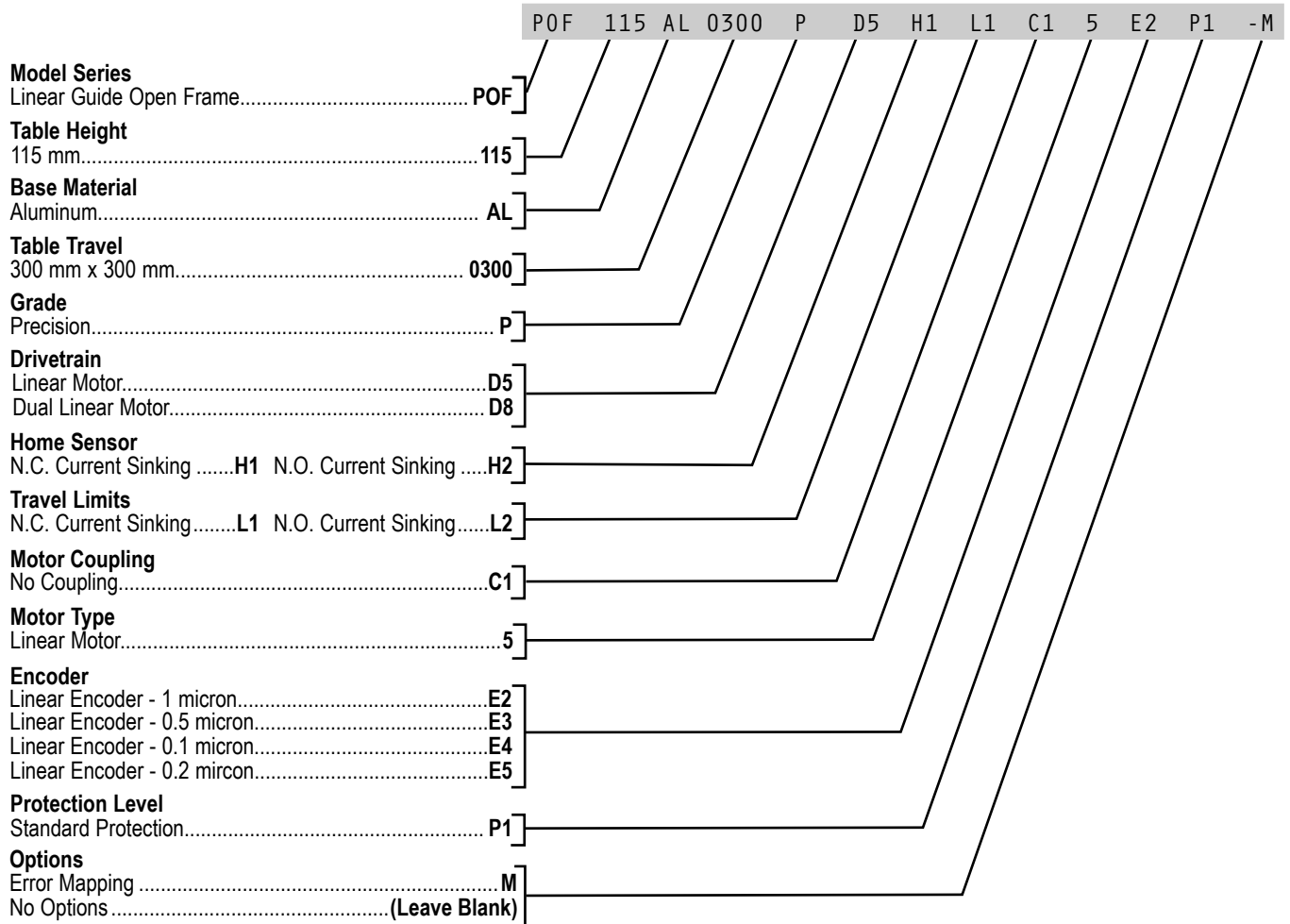


OEM Solutions

MODEL NUMBER CONFIGURATION

OPTIONS :

SAMPLE MODEL NUMBER :



¹Allow Longer Delivery Trime ²Includes Z bracket

*Not all configurations are valid. Consult factory for assistance.

