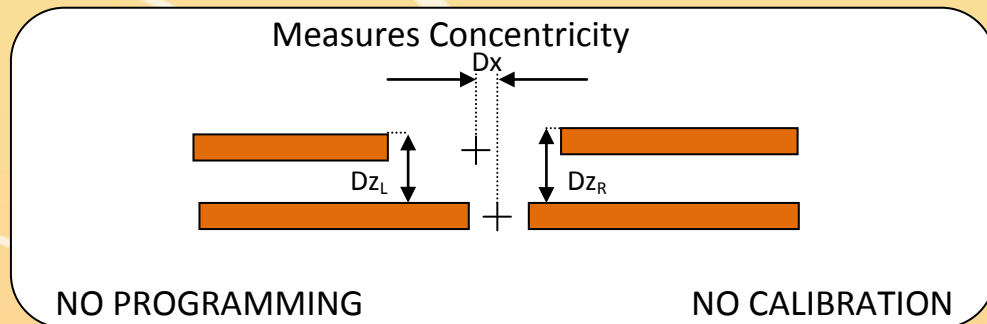


Lucana M Concentric Sensor

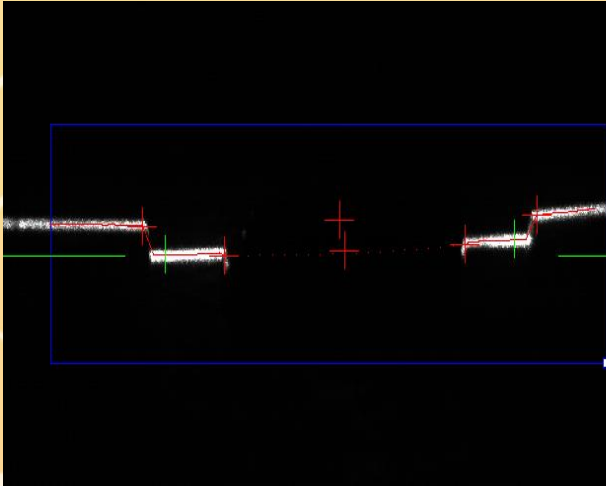
Lucana M Concentric Sensor can measure the concentricity between two overlapped openings. Our innovation allows Lucana M Concentric to perform measurements without calibration, setup, or programming.



- Cost Effective
- Front Measurement
- Handheld or Attached
- Measures concentricity
- Measures on the Fly

Lucana M Concentric Sensor

User Interface



The user interface for Lucana M Concentric Sensor measuring the concentricity of overlapped openings. The user can view the measurements of concentricity in millimeters or inches and set the tolerance for pass or fail. The data can be sent to another device via UDP, TCP/IP protocol as well as log the data locally or on any network drive.

Operation	
<input type="button" value="Start"/>	<input type="button" value="Once"/>
<input type="button" value="Stop"/>	<input type="button" value="Save Image"/>
Calc. Time:	468 ms
Total:	554 ms
Data Logging	
Part List	<input type="text"/>
Enable Logging	<input type="checkbox"/>
<input type="button" value="Add"/>	<input type="button" value="Delete"/>
Measurements	
Dx	1.00 mm
Dz_left	2.99 mm
Dz_right	2.95 mm
Units	<input type="button" value="IN"/>
Toleraances	
Max Dx	12 mm
Min Dx	8 mm
Max Dz_left	1.6 mm
Min Dz_left	0.8 mm
Max Dz_right	1.6 mm
Min Dz_right	0.8 mm
<input type="button" value="Apply"/>	
Transfer/Trigger	
Trigger I/O	<input type="checkbox"/>
1000	Delay (msec)
<input type="button" value="Set"/>	
Trigger UDP	<input type="checkbox"/>
Trigger TCP/IP	<input type="checkbox"/>
Exposure Control	
20	<input type="button" value="Apply"/>
Parameters	
Curvature length	10
Min Curvature	10
Edge Strength	20
<input type="button" value="Help"/>	<input type="button" value="Apply"/>

Continuous Measurement, single measurement and time

Data Logging to local or network drive with ability to specify a tag such as part list

Measurement in millimeter or inches

Tolerance setting for pass/fail output to digital to digital I/O (Optologic) or set flag in communication.

Communications TCP/IP, UDP, and I/O (Optologic)

Control to accommodate different surface reflectance

Lucana M Concentric Sensor



Specifications

Measurements	Concentricity and Height
Resolution	
On Center	± 0.076 mm / 0.003 in
Within Box	± 0.127 mm / 0.005 in
Concentricity range:	± 19 mm/0.75 in
Nominal Standoff distance	85 mm/3.35 in
Output	UPD, TCP/IP, Digital I/O Data Logging
Dimension	
Sensor	(w x h x d) 25.4 x 25.4 x 177.8 mm, 2 x 2 x 7 in
Processor	(w x h x d) 166 x 48 x 157 mm, 6.5 x 1.9 x 6.2 in
Input voltage	12V
Input current	5A
Environmental	
Storage Temperature	-10° C to +70° C
Operating Temperature	+5° C to + 50° C