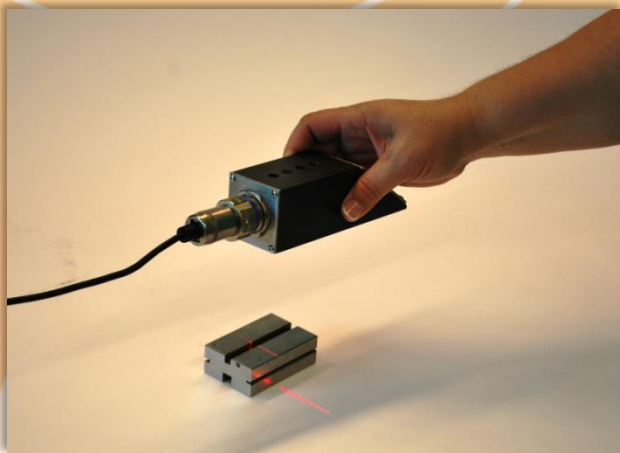
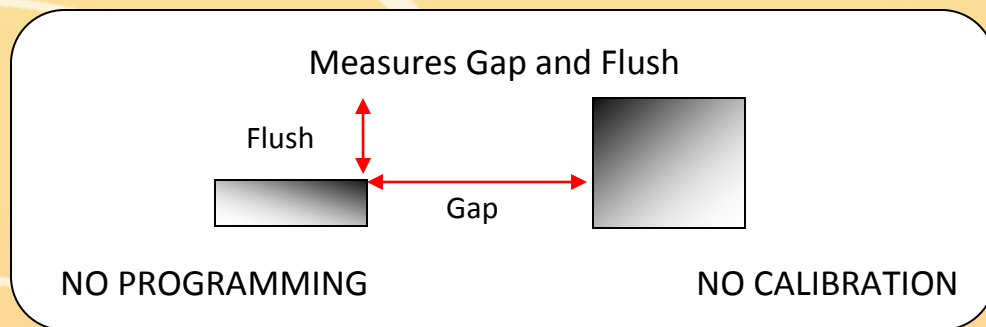


# Lucana M Gap/Flush Sensor

The Lucana M Gap/Flush sensor can measure the gap width and flush height between two surfaces. Our innovation allows Lucana M Gap/Flush sensor to perform measurements automatically without calibration, setup, or programming.

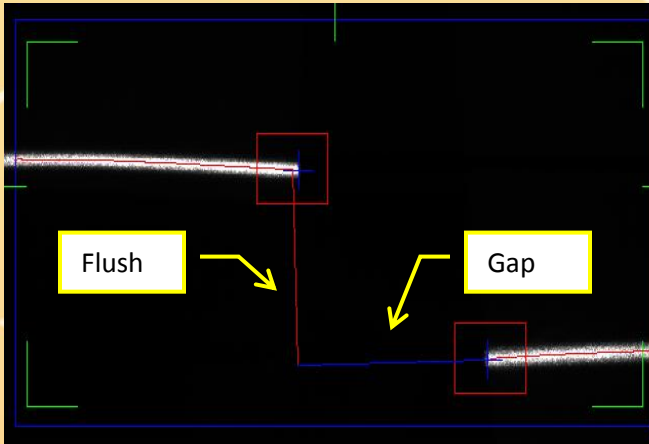


- Cost Effective
- Front Measurement
- Handheld or Attached
- Measures Gap Width
- Measures Flush Height
- Measures on the Fly

# Lucana M Gap/Flush Sensor



## User Interface



The user interface for Lucana M Gap/Flush measuring the gap and flush between two surfaces. The user can view the measurements of gap width and flush height in millimeters or inches and set the tolerance for pass or fail. The data can be sent to another device via UDP, TCP/IP protocol as well as log the data locally or on any network drive.

**Operation**

Start Once Save Image

Stop Calc. Time: 53 ms Total: 136 ms

**Data Logging**

Part List

Enable Logging  Add Delete

**Measurements**

Flush Height 0.7354 in  MM

Gap Width 0.5655 in

**Tolerances**

Max Gap Width 0.252098 in

Min Gap Width 0.248201 in

Max Step Height 0.003901 in

Min Step Height 0 in

Apply

**Transfer/Trigger**

Enable I/O  Trigger I/O

Trigger UDP  Enable TCP/IP

...

**Exposure Control**

1   Apply

**Parameters**

Line Sharpness 30  Apply

0  Lock Help

Reset Unlock

Continuous Measurement, single measurement and time

Data Logging to local or network drive with ability to specify a tag such as part list

Measurement in millimeter or inches

Tolerance setting for pass/fail output to digital to digital I/O (Optologic) or set flag in communication.

Communications TCP/IP, UDP, and I/O (Optologic)

Control to accommodate different surface reflectance

On the fly calibration reset with passcode protection

# Lucana M Gap/Flush Sensor

## Specifications



<b>Measurements</b>	Gap and Flush
<b>Resolution</b>	
<b>On Center</b>	± 0.076 mm / 0.003 in
<b>Within Box</b>	± 0.127 mm / 0.005 in
<b>Minimum Gap</b>	2.2 mm/0.9 in
<b>Maximum Gap</b>	38 mm/1.50 in
<b>Minimum Flush</b>	0 mm/0 in
<b>Maximum Flush</b>	30 mm/3.5 in
<b>Nominal Standoff distance</b>	85 mm/3.35 in
<b>Output</b>	UPD, TCP/IP, Digital I/O Data Logging
<b>Dimension</b>	
<b>Sensor</b>	(w x h x d) 25.4 x 25.4 x 177.8 mm, 2 x 2 x 7 in
<b>Processor</b>	(w x h x d) 166 x 48 x 157 mm, 6.5 x 1.9 x 6.2 in
<b>Input voltage</b>	12V
<b>Input current</b>	5A
<b>Environmental</b>	
<b>Storage Temperature</b>	-10° C to +70° C
<b>Operating Temperature</b>	+5° C to + 50° C