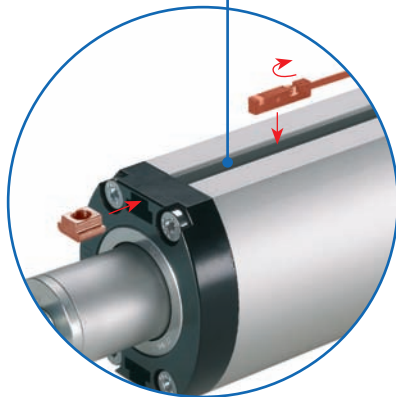
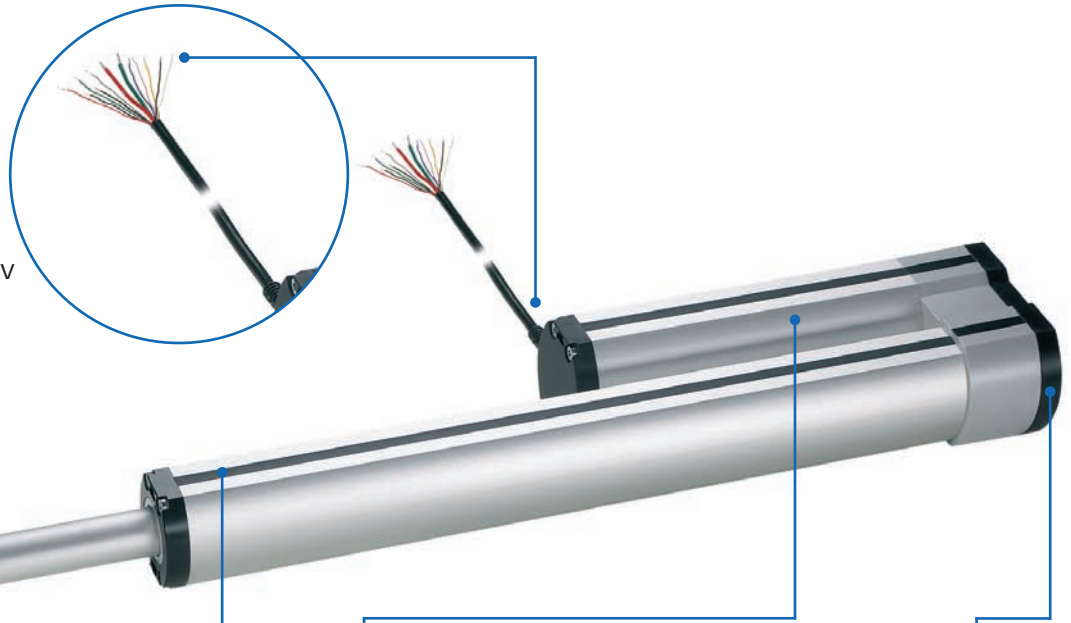


LZ 80 Heavy-duty cylinder

The industrial design complete system with push/pull forces up to 10,000 N.

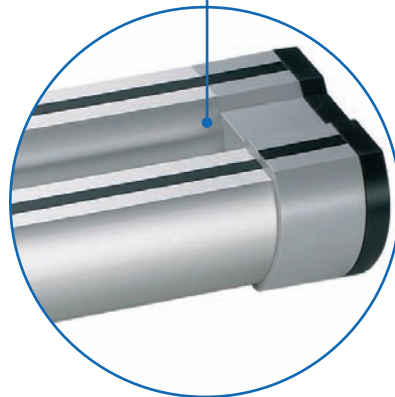
Electrical connection

- ✓ Cable outlet
- ✓ Internal limit switches, incremental displacement pick-up and optional lead-through for brake
- ✓ Connection to PLC or equivalent control 24 V / 36V



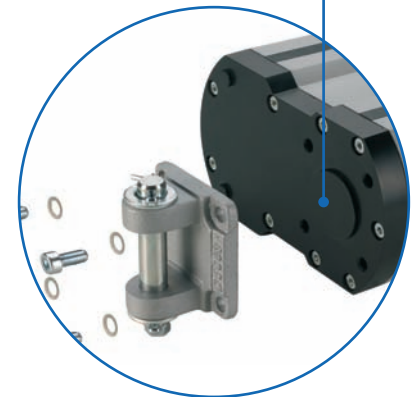
Adjustable external magnetic switch

- ✓ Covered in slot geometry
- ✓ Stroke can be adjusted
- ✓ Accessories can be retrofitted
- ✓ Pre-fitted with internal magnets for external magnetic switch



High-performance DC motor

- ✓ Integrated motor brake on "ball screw" version



Cylinder fixing

- ✓ Simple connection of trunnion flange, trunnion or clevis

Features:

- Integrated DC drive
- Integrated limit switches
- Flexible use of space thanks to parallel motor positioning
- Coverable slot geometry on both sides, supports a range of fixing options
- Push rod with rotation locking

- Maintenance-free for entire lifetime of unit
- IP 54
- Self-locking
- Choice of ACME screw or recirculating-ball spindle

Options:

- Optional IP 66 can be supplied
- Special stroke lengths available on request
- ACME screw version optionally available with motor brake

LZ 80 Electric cylinder - Table of contents

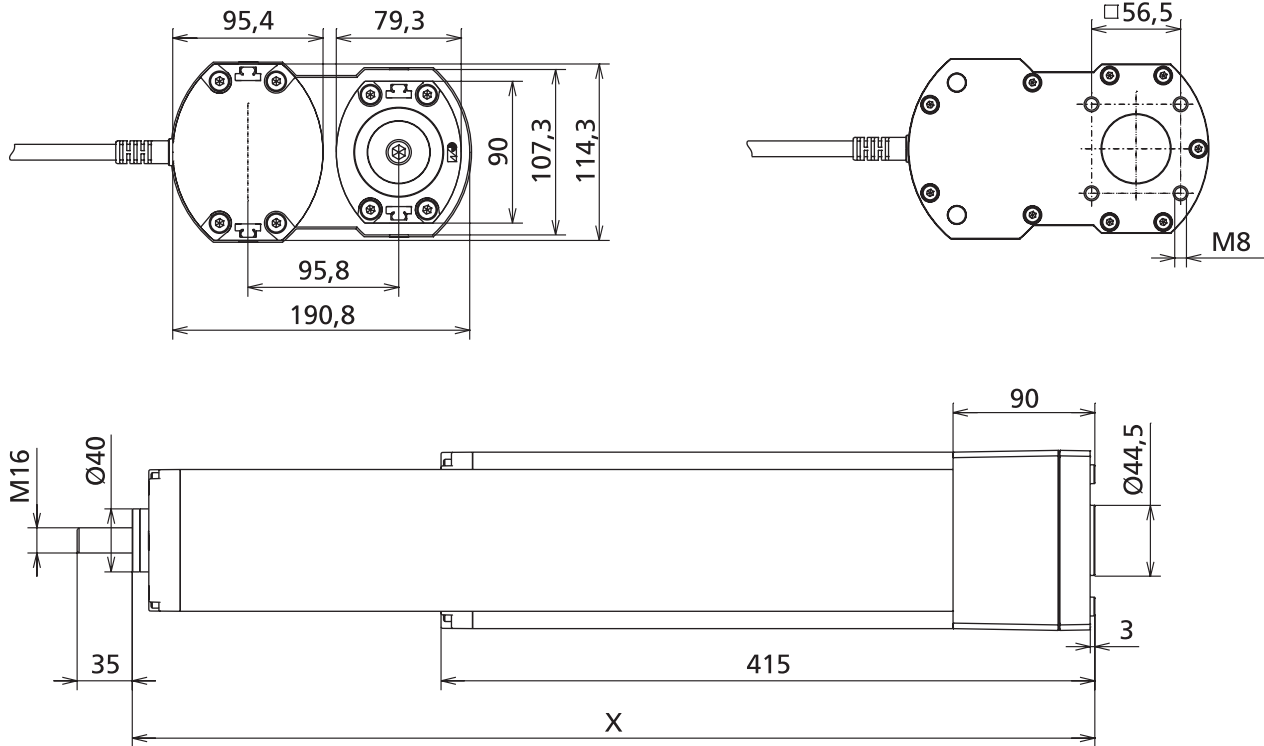
Properties/Technical data	<ul style="list-style-type: none"> ■ General information/operating conditions... 288 				
Versions (Dimensions, order numbers)	LZ 80 electric cylinder with ACME screw and ball screw drive: <ul style="list-style-type: none"> ■ Dimensions/Order table..... 289 				
Accessories	<table border="0"> <tr> <td style="vertical-align: top;">Fixing</td> <td style="vertical-align: top;"> <ul style="list-style-type: none"> ■ Slot stones 290 ■ Clevis 290 ■ Trunnion flange..... 290 ■ Trunnion 290 </td> </tr> <tr> <td style="vertical-align: top;">Position determination</td> <td style="vertical-align: top;"> <ul style="list-style-type: none"> ■ Magnetic switch 291 ■ Controls 291 </td> </tr> </table>	Fixing	<ul style="list-style-type: none"> ■ Slot stones 290 ■ Clevis 290 ■ Trunnion flange..... 290 ■ Trunnion 290 	Position determination	<ul style="list-style-type: none"> ■ Magnetic switch 291 ■ Controls 291
Fixing	<ul style="list-style-type: none"> ■ Slot stones 290 ■ Clevis 290 ■ Trunnion flange..... 290 ■ Trunnion 290 				
Position determination	<ul style="list-style-type: none"> ■ Magnetic switch 291 ■ Controls 291 				

LZ 80 – Technical data

General information/operating conditions

	ACME screw	Ball screw
Design	Linear cylinder with integrated DC motor	
Guide	Double bearing with POM bushes	
Installation position	Any position, without shear forces	
Ambient temperature	+5°C to +40°C	
Repeatability	0.5 mm	
Speed	Max. 25 mm/s	
Duty cycle (at max. load)	10% (1 min. operating time; 9 mins rest time/depending on sizing, up to 100% duty cycle possible)	
Voltage	24 V	
Current consumption	12 A	
Power input	450 W	
Protection class	IP 54 (optional IP 66)	
Compressive force/tensile force	10,000 N	
Self-locking	10,000 N	10,000 N (motor brake)





Versions LZ 80

Code No.	Type	Max. force F [N]	Max. speed [mm/s]	Max. current consumption I [A]
ACME screw 24 x 5				24 V DC
QLP00AAAB_ _ _ _	LZ 80	2,000	25	9
QLP00ABAB_ _ _ _	LZ 80	5,000	13	11
QLP00ACAB_ _ _ _	LZ 80	10,000	6.5	11.5
Ball screw drive 20 x 5				
QLP11ADAB_ _ _ _	LZ 80	6,000	24	10.5
QLP11AEAB_ _ _ _	LZ 80	10,000	12	10.5
QLP11AFAB_ _ _ _	LZ 80	10,000	6	7

Stroke lengths available in increments of 7.5 mm
 e.g. stroke [mm] = **0397.5**

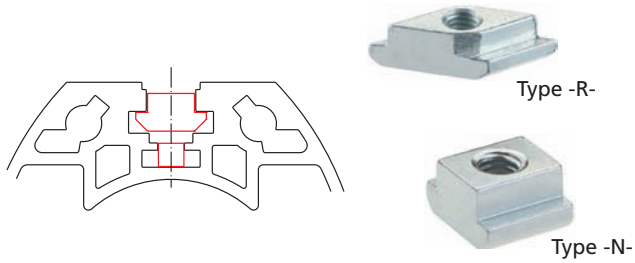
Stroke [mm]	Installation dimension X [mm]	Weight [kg]
7.5 to 397.5	Stroke + 311.0	12.5-16.0
405.0 to 600.0	Stroke + 348.5	16.0-18.0
607.5 to 795.0	Stroke + 386.0	18.0-20.0
802.5 to 1005.0	Stroke + 431.0	20.0-22.0

LZ 80 – Fixing/Position determination

Slot stone

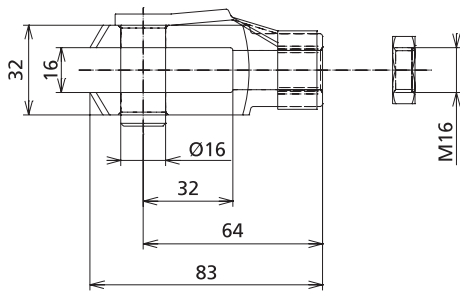
■ Slot stones facilitate the attachment of fittings to the cylinder.

■ To this end, the slot stones can be slid into the lateral slots (Type -N-) or swivelled into the slot from above (Type -R-).



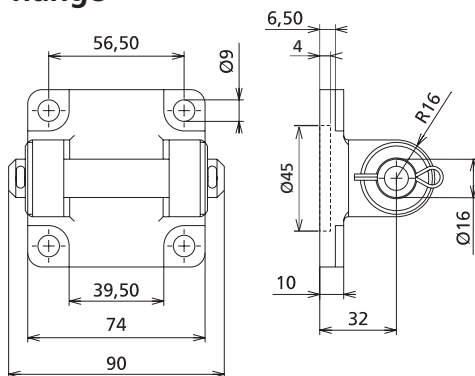
Code No.	Type	F [N]
4026203	Slot stone -N- M6	9,000
4026206	Slot stone -N- M8	9,000
4026221	Slot stone -R- M6	8,000
4026222	Slot stone -R- M8	8,000

Clevis



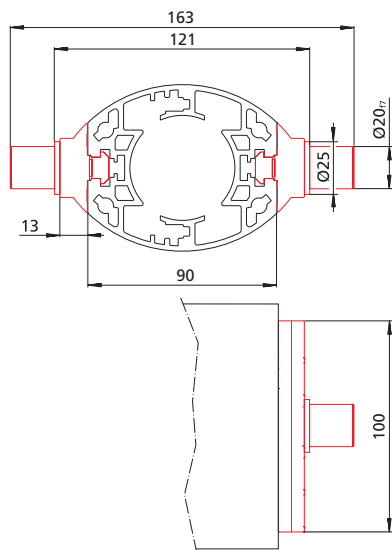
Code No.	Type
QZD050322	Clevis

Trunnion flange



Code No.	Type
QZD050323	Trunnion flange, incl. fastenings

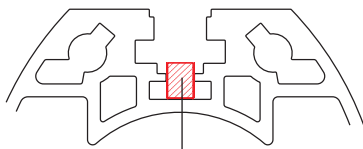
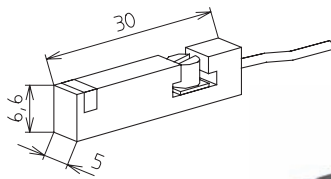
Trunnion



Code No.	Type
QZD050324	Trunnion

LZ 80 - Position determination

Magnetic switch



Magnetic switch

- Signals from the magnetic switch can be collected and evaluated by a customer-provided control unit (such as a PLC).
- The switch can be retrofitted in the lateral slot (protected by a cover profile as standard)
- Magnets are integrated in the cylinder as standard.

Code No.	Type
QZD050193	Magnetic switch, NO contact, cable length 6 m
QZD050334	Magnetic switch, NC contact, cable length 5.3 m

Magnetic switch – Technical data

	NC contact	NO contact
Voltage	10-30 V DC	5-30 V DC
Current consumption	< 10 mA	< 10 mA
Output current	Max. 100 mA	Max. 50 mA
Output type	PNP	PNP
Function indication	LED	LED
Ambient temperature	-25°C to +85°C	-20°C to +70°C
Protection class	IP 67	IP 68

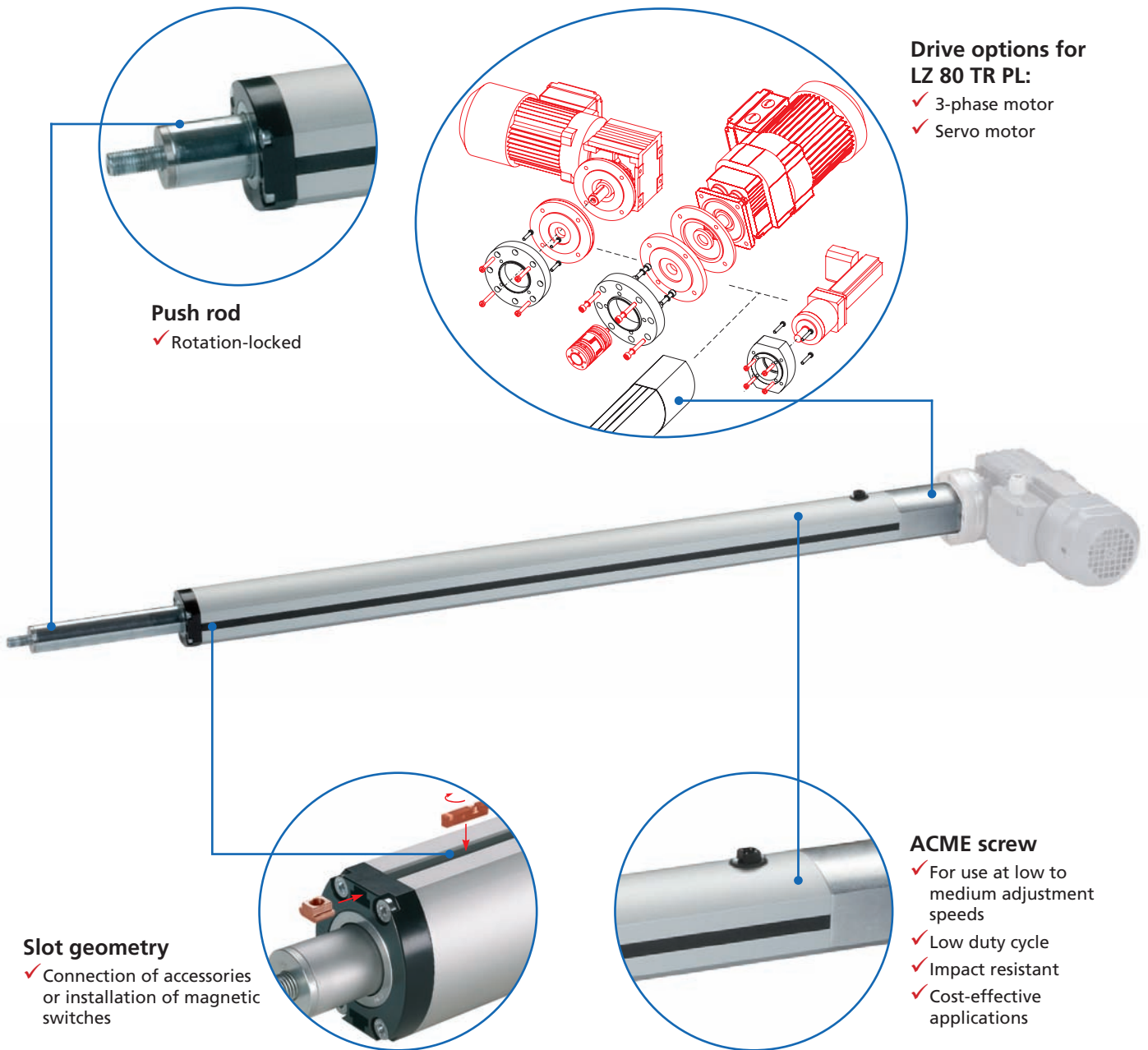
Control requirements

Power supply	24 V DC, at least 500 W
Current output	At least 20 ADC
Deceleration	Via generator brakes
Brake power	At least 500 W
Duty cycle	Up to 100%
Motor brake	24 V DC, at max. 1 ADC
Limit switch evaluation	Upper and lower limit switch (NC contacts)

Note:
Controls available on request.

Heavy duty cylinder - LZ 80 TR PL

The new generation of industrial linear cylinders



Push rod
✓ Rotation-locked

Drive options for LZ 80 TR PL:

- ✓ 3-phase motor
- ✓ Servo motor

Slot geometry
✓ Connection of accessories or installation of magnetic switches

ACME screw
✓ For use at low to medium adjustment speeds
✓ Low duty cycle
✓ Impact resistant
✓ Cost-effective applications

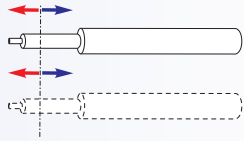
Features:

- Freely selectable drive (three-phase motor/servo motor)
- Flexible use of space thanks to different motor configuration options
- Coverable slot geometry on both sides supports a range of fixing options
- Push rod with rotation locking
- Maintenance-free for up to 50 operating hours
- Lifetime up to 3,000 operating hours (20,000 double strokes)
- Protection class IP 54
- Integrated magnets for external magnetic switches

Options:

- Optional IP 65 can be supplied
- Special stroke lengths available on request
- External magnetic switches
- Angular three-phase motor with fixing boss available on request

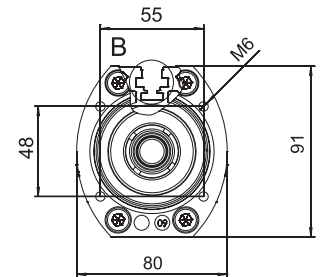
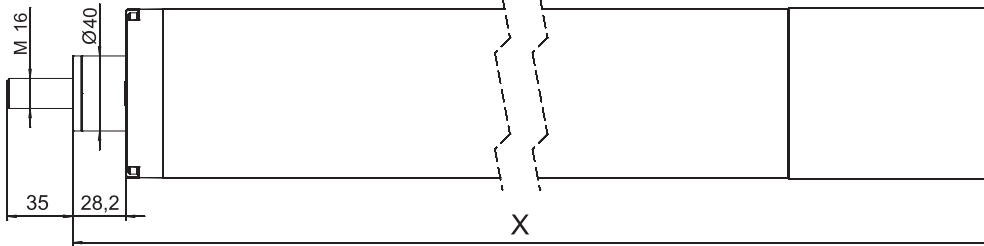
LZ 80 TR PL Electric cylinder - Table of contents

Properties/Technical data		<ul style="list-style-type: none"> ■ General information/operating conditions ... 295
Versions (Dimensions, order numbers)		<ul style="list-style-type: none"> ■ LZ 80 TR PL electric cylinder 294
Accessories	Fixing	<ul style="list-style-type: none"> ■ Slot stone 295 ■ Clevis 295 ■ Trunnion 295
	Drive	<ul style="list-style-type: none"> ■ Adaptor kit for three-phase motor 296 ■ Adaptor kit for servo motor 297
	Position determination	<ul style="list-style-type: none"> ■ Magnetic switch 297

LZ 80 TR/PL – Versions

Order information:

- Longer stroke lengths available on request
- The drive train (motor, motor adaptor kit and coupling) is not included and must be ordered separately



LZ80 versions

Code No.	Type	Max. force F [N]	Max. speed [mm/s]	Max. stroke	Duty cycle [%]	Double strokes per hour with 500 mm travel	Output [kW]	Motor selection (not included)	Speed output shaft [rpm]
ACME screw 24 x 5								with motor brake	
TQ11A1A1B11AA	LZ 80 TR PL	2,000	27	1,005	20	17	0.37	WF20DR63L2	323
		5,000	14			9	0.37	WF20DR63L2	161
		10,000	6			4	0.37	WF30DR571S4	71

Stroke lengths available in increments of 7.5 mm
e.g. stroke [mm] = 0 3 9 7 .5

Note:
Performance data are based on an SEW three-phase motor; a range of motor combinations from other manufacturers are available on request.

Stroke	Install. dimension X [mm]
7.5 to 397.5	Stroke + 348.5
405.0 to 600.0	Stroke + 386
607.5 to 795.0	Stroke + 423.5
802.5 to 1005.0	Stroke + 468.5

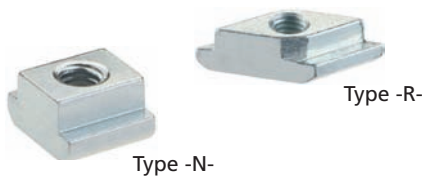
General information/operating conditions

Type	LZ80 PL with ACME screw for a range of moving applications LZ 80 TR PL
Push force/Pull force	10,000 N
Self-locking (via motor brake)	12,000 N
Max. speed	27 mm/s
Design	With ACME screw 24 x 5
Guide	Double bearing provided by slide bushes
Installation position	Any position, without shear forces
Ambient temperature	+5°C to +40 °C
Repeatability	± 0.2 (depending on position transducer used)
Duty cycle (at max. load)	20% (based on electric cylinder)
Lifetime (500 mm travel)	20,000 double strokes
Voltage	230/400 V AC
Current consumption (max. starting current)	depending on motor selection
Power input	depending on motor selection, up to 0.37 KW
Protection class	IP 54 (optional IP 65)

The data refers to three-phase motors 230/400 V AC, 50 Hz.

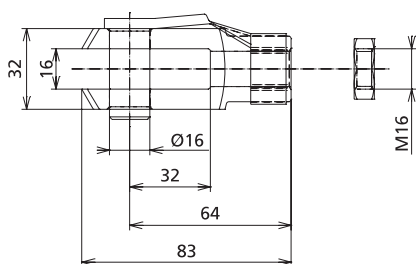
Slot stone

- Slot stones facilitate the attachment of fittings to the cylinder.
- The slot stones can be slid into the lateral slots (Type -N-) or swivelled into the slot from above (Type -R-).



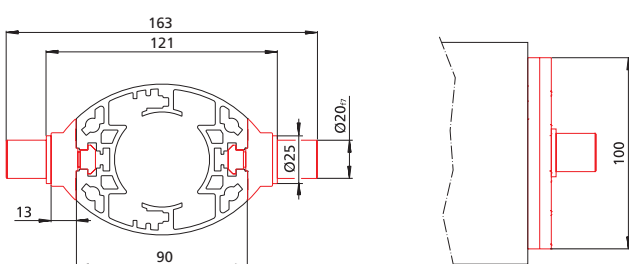
Code No.	Type	F [N]
4026207	Slot stone -N- M5	4,000
4026203	Slot stone -N- M6	9,000
4026206	Slot stone -N- M8	9,000
4026221	Slot stone -R- M6	8,000
4026222	Slot stone -R- M8	8,000

Clevis



Code No.	Type
QZD050322	Clevis

Trunnion



Code No.	Type
QZD050324	Trunnion

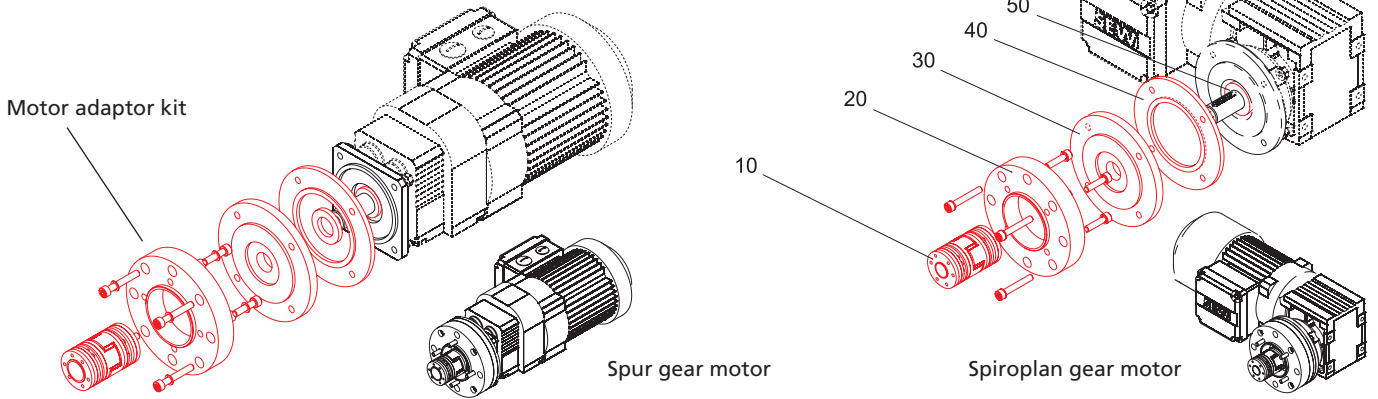
LZ 80 TR PL – Drive/Position determination

Motor adaptor kit for 3-phase motor

Motor adaptor kit for SEW Spiroplan and spur gear motor (incl. rotary pulse encoder)

No.	Description
10	Shaft coupling 15 mm, B: 20 mm
20	Motor adaptor kit
30	Rotary pulse encoder

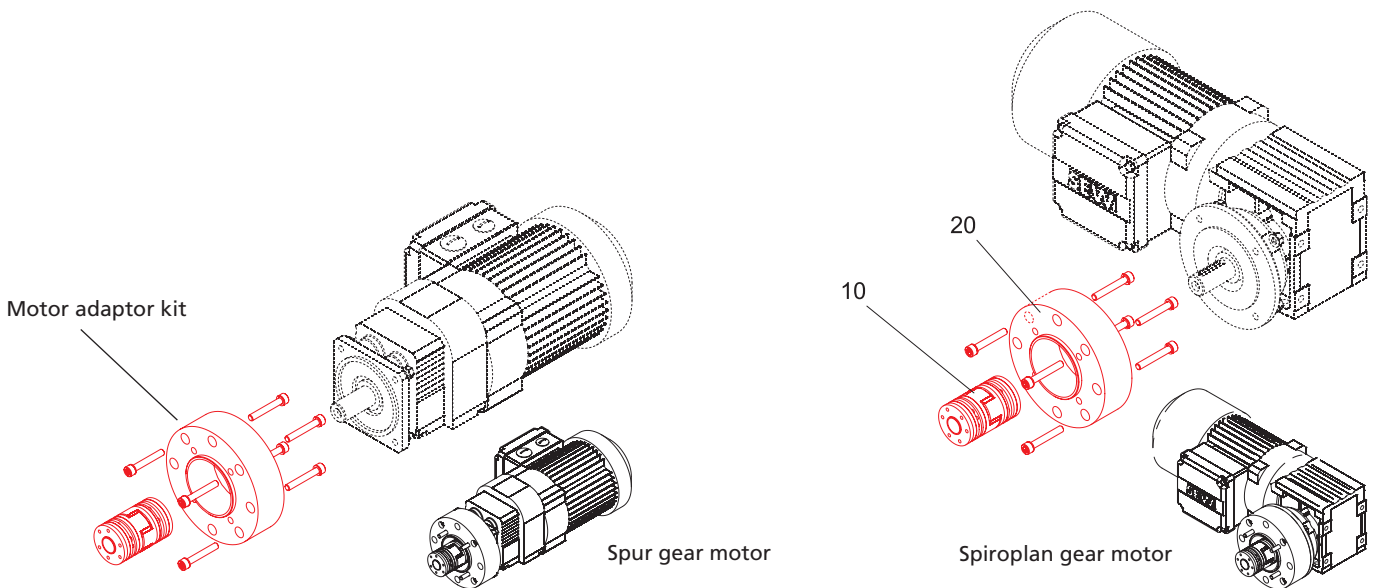
A:	40	Flange ring for rotary pulse encoder
	50	Spacer ring 35/20 x 4.5



Code No.	Type
949986001	Motor adaptor kit for SEW gear motor, including rotary pulse encoder and coupling with double clamping ring hub

Motor adaptor kit for SEW Spiroplan and spur gear motor (without rotary pulse encoder)

No.	Description
10	Shaft coupling A: 15 mm, B: 20 mm
20	Motor adaptor kit

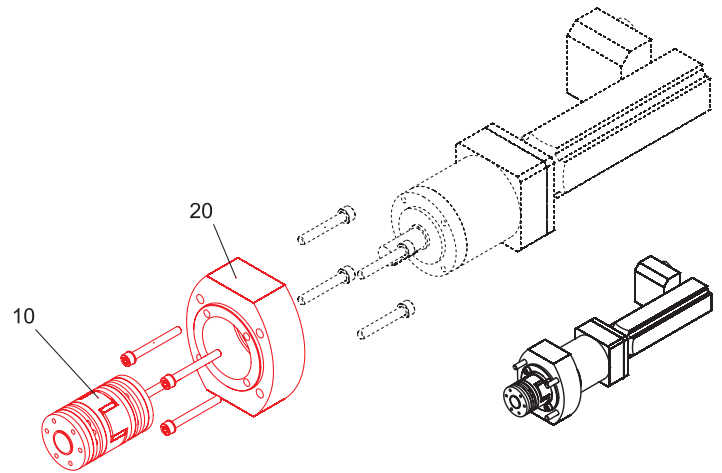


Code No.	Type
949987001	Motor adaptor kit for SEW gear motor, including coupling with double clamping ring hub

Motor adaptor kit for servo motor/position determination

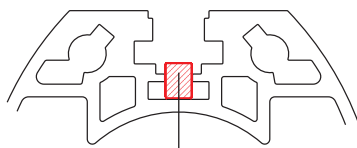
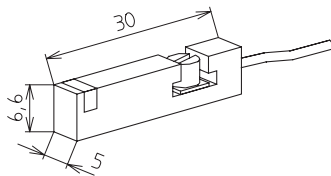
Motor adaptor kit for AC112 servo motor

No.	Description
10	Shaft coupling A: 14 mm, B: 15 mm
20	Motor adaptor kit



Code No.	Type
949988001	Motor adaptor kit for AC112 servo motor, including coupling with double clamping ring hub

Magnetic switch



Magnetic switch

- Signals from the magnetic switch can be collected and evaluated by a customer-provided control unit (such as a PLC).
- The switch can be retrofitted in the lateral slot (protected by a cover profile as standard)
- Magnets are already integrated within the cylinder as standard.



Code No.	Type
QZD050334	Magnetic switch, NC contact*, cable length 5.3 m

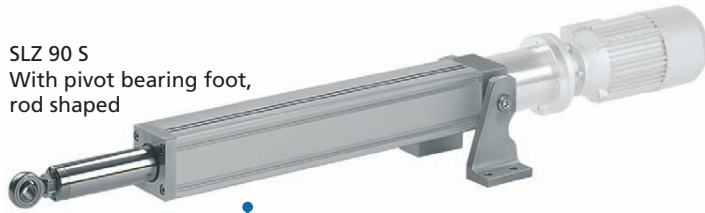
*Magnetic switch, NO contact, available on request

Magnetic switch – Technical data

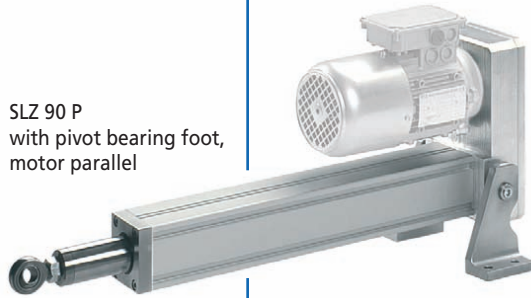
	NC contact
Voltage	10-30 V DC
Current consumption	< 10 mA
Output current	Max. 100 mA
Output type	PNP
Function indication	LED
Ambient temperature	-20°C to +70°C
Protection class	IP 67

Heavy duty cylinder - SLZ 90

The powerful linear cylinder for precise moving applications up to 25,000 N



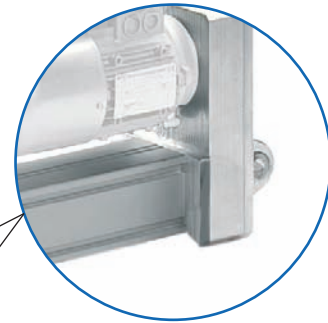
SLZ 90 S
With pivot bearing foot,
rod shaped



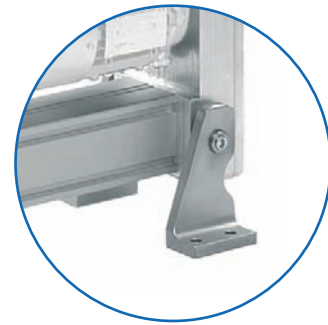
SLZ 90 P
with pivot bearing foot,
motor parallel



SLZ 90 W
with pivot bearing foot,
motor angled



SLZ 90 version
with fixing boss



SLZ 90 version
with pivot bearing foot



Drive options for SLZ 90

- ✓ 3-phase motor
- ✓ Servo motor

Features:

- Choice of drives (3-phase motor/servo motor)
- Flexible use of space due to different motor configurations
- Forces from 10,000 N to 25,000 N
- Coverable slot geometry on both sides supports a range of fixing options for attachments
- Push rod with rotation locking
- Travel up to 2000 mm
- Maintenance-free for entire lifetime of unit
- IP 54
- Self-locking
- Integrated magnets for external magnetic switches

Options:

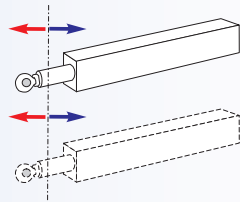
- Optional IP 65 can be supplied
- Special stroke lengths available on request
- ACME screw version optionally available with motor brake

SLZ 90 Electric cylinder - Table of contents

Properties/Technical data

- General information/operating conditions... 300

Versions
(Dimensions, order numbers)



- SLZ 90 electric cylinder with pivot bearing foot and fixing boss:

SLZ 90 S 302 - 303

SLZ 90 P 304 - 306

SLZ 90 W 308 - 310

Accessories

Fixing

- Slot stone -R- 311

Position determination

- Magnetic switch 311

SLZ 90 – Technical data

General information/operating conditions

Type	SLZ 90 with ACME screw for moving applications		
	SLZ 90 S	SLZ 90 P	SLZ 90 W
Push force/Pull force	24,000 N	14,000 N	25,000 N
Self-locking (via motor brake)	25,000 N	25,000 N	25,000 N
Max. speed	77 mm/s	77 mm/s	23 mm/s
Design	Linear cylinder with ACME screw 26 x 5 or 36 x 6		
Guide	Double bearing provided by slide bushes		
Installation position	Any position, without shear forces		
Ambient temperature	-20°C to +70°C		
Repeatability	± 0.3 mm		
Duty cycle (at max. load)	25% (2.5 mins operating time; 7.5 mins rest time/depending on sizing, up to 40% duty cycle possible)		
Voltage	230/400 V AC		
Current consumption (max. starting current)	depending on motor selection		
Power input	depending on motor selection, up to 1.5 KW		
Protection class	IP 54 (optional IP 65)		

The data refers to a three-phase motor 230/400 V AC, 50 Hz, different performance data available on request.

Connecting slots - guide profile



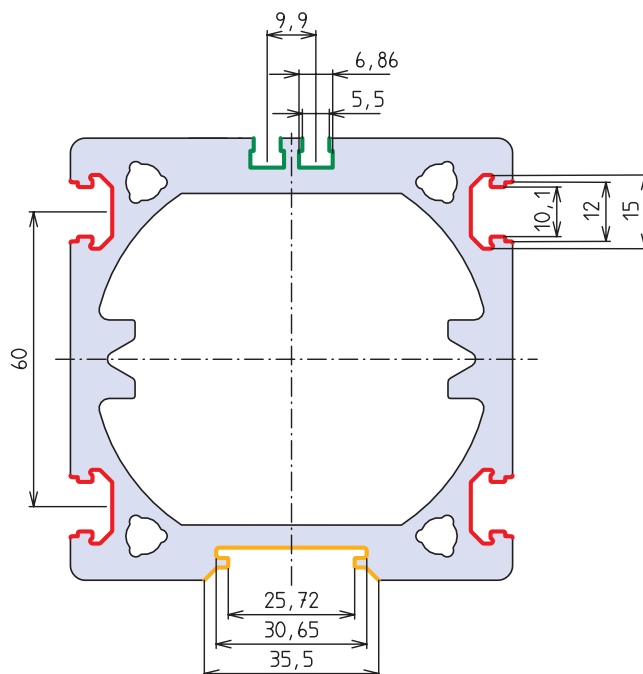
Slot for magnetic switch, see page 311



Slot for accessory attachment
(30 BLOCAN® slot geometry)



Slot for fixing a position transducer
(available on request)





Adjustment of maintenance platform via SLZ 90 heavy duty cylinders.

SLZ 90 S - Versions

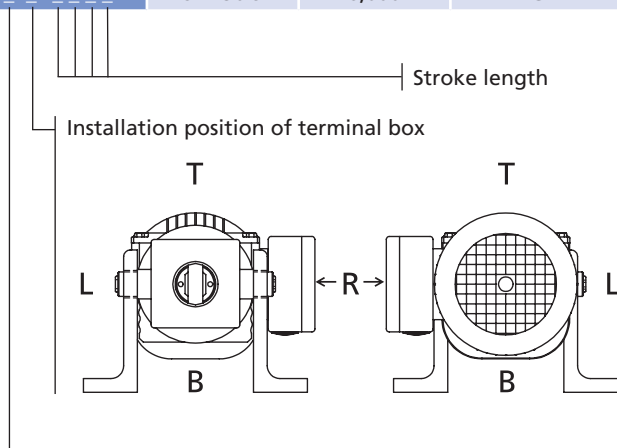
Order information:

- Longer stroke lengths on request
- Other speeds and motors available on request



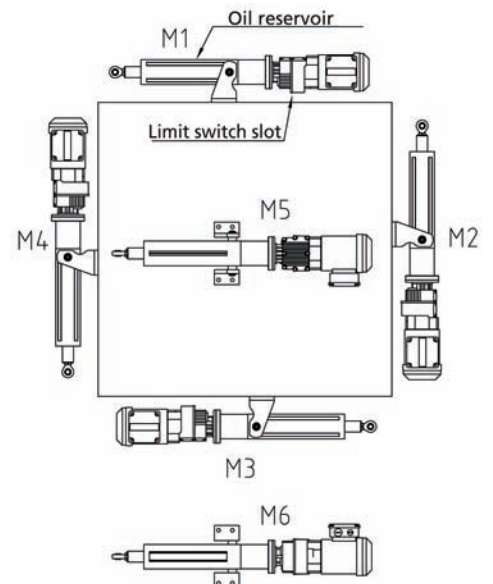
SLZ 90 S versions with ACME screw

Code No.	Type	Max. force F [N]	Max. speed [mm/s]	Max. stroke [mm]	Output [kW]	Motor selection
ACME screw 26 x 5						without motor brake
TQ21A1S2T_1_A_---	SLZ 90 S	12,000	13	1,000	0.55	RF17DRS71M4
TQ21A1S2Y_1_A_---	SLZ 90 S	14,000	8	1,000	0.37	RF17DRS71S4
						with motor brake
TQ21A1S2E_1_A_---	SLZ 90 S	6,000	52	1,300	1.1	RF17DRS80M2/BE
TQ21A1S2L_1_A_---	SLZ 90 S	8,000	30	1,200	0.75	RF17DRS80S4/BE
ACME screw 36 x 6						without motor brake
TQ21A1S2H_2_A_---	SLZ 90 S	18,000	18	1,400	1.1	RF17DRS80M2
TQ21A1S2P_2_A_---	SLZ 90 S	25,000	10	1,100	0.75	RF17DRS80S4
						with motor brake
TQ21A1S2E_2_A_---	SLZ 90 S	5,000	63	2,000	1.1	RF17DRS80M2/BE
TQ21A1S2G_2_A_---	SLZ 90 S	8,000	37	2,000	1.1	RF17DRS80M2/BE

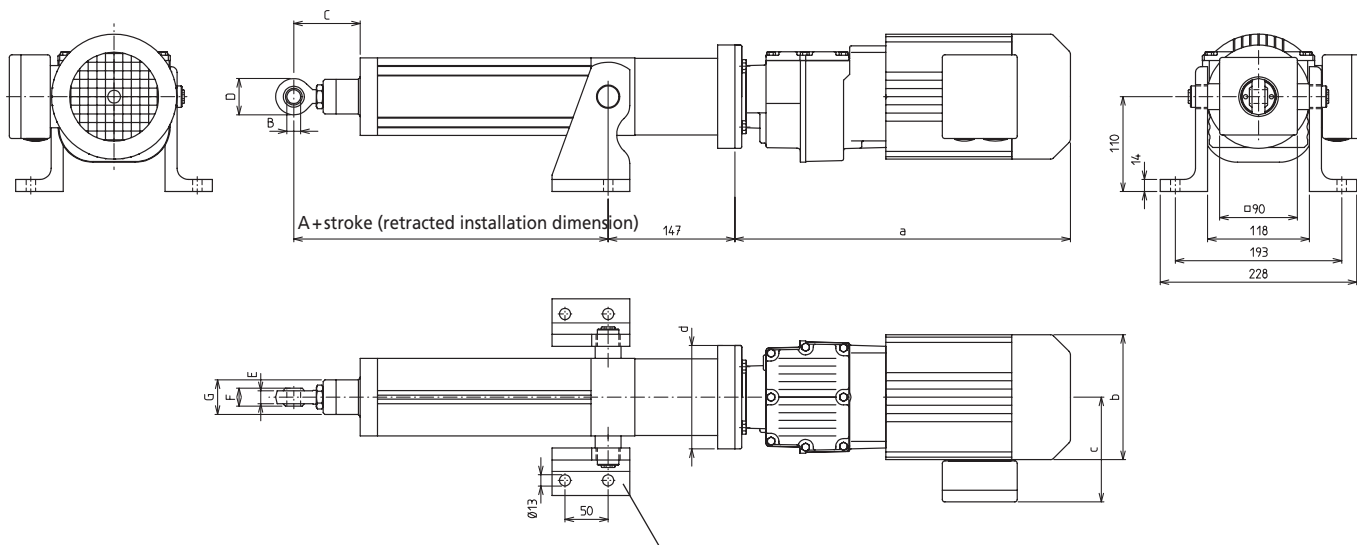


All diagrams show the terminal box in the R position

- 1 = M1 4 = M4
- 2 = M2 5 = M5
- 3 = M3 6 = M6



Version with pivot bearing foot



Can be turned through 360°
The pivot bearing feet can also be mounted laterally reversed.

[mm]

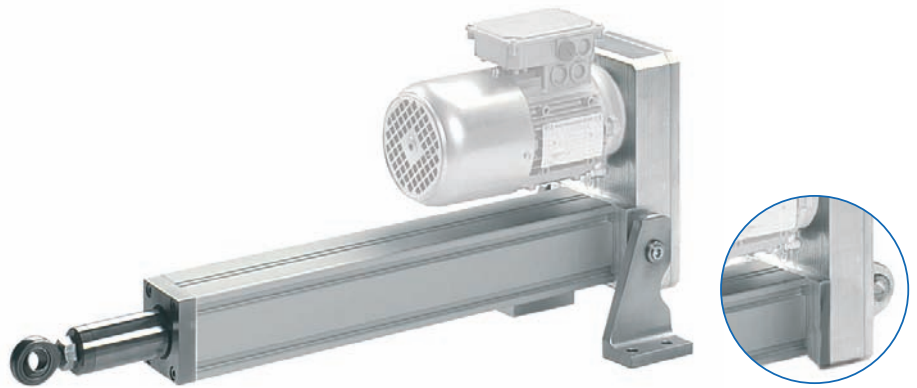
3-phase motors	a	b	c	d	Weight [kg]
RF17DRS71	360	Ø 139	119	Ø 120	11
RF17DRS71/BE	428		129		14
RF17DRS80	360	Ø 156	128	Ø 120	9
RF17DRS80/BE	428		139		12

Type	A	B	C	D	E	F	G	Weight [kg]	
								Basic length (dimension A)	Additional weight/100 mm
Tr 26 x 5	215	Ø 16	94	42	15	21	Ø 40	10.8	1.5
Tr 36 x 6	245	Ø 20	113	50	18	25	Ø 50	12.0	2.0

SLZ 90 P - Versions

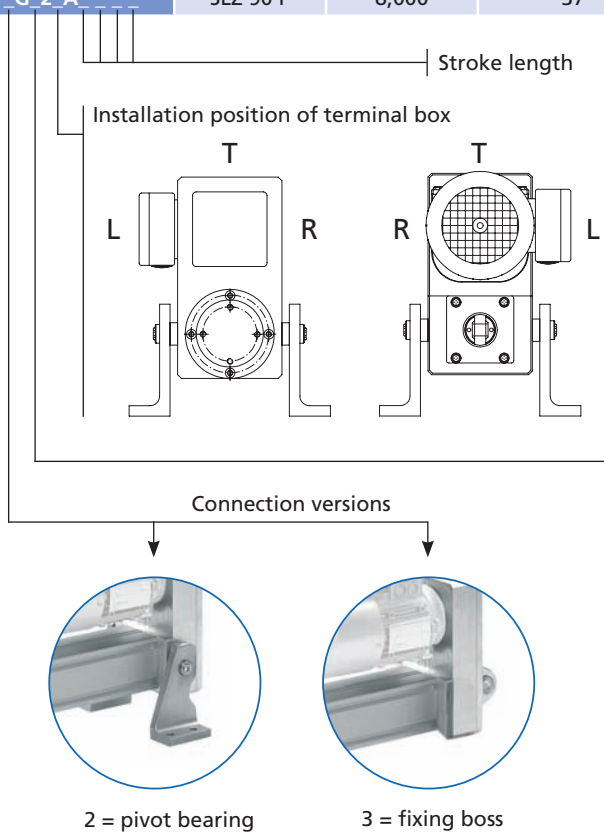
Order information:

- Longer stroke lengths on request
- Other speeds and motors available on request



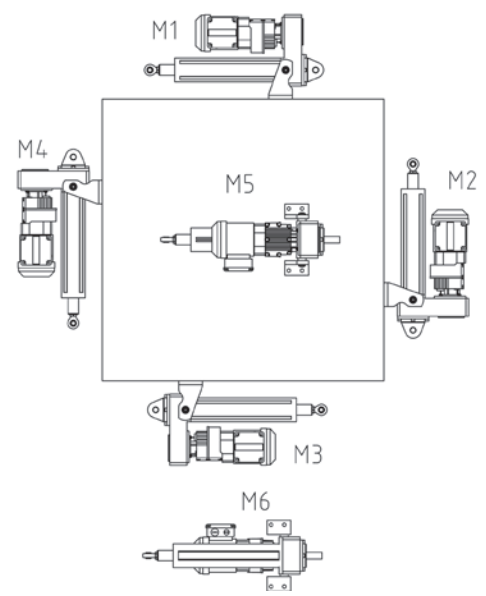
SLZ 90 P versions with ACME screw

Code No.	Type	Max. force F [N]	Max. speed [mm/s]	Max. stroke [mm]	Output [kW]	Motor selection
ACME screw 26 x 5						without motor brake
TQ21A1P_T_1_A_---	SLZ 90 P	12,000	13	1,000	0.55	RF17DRS71M4
TQ21A1P_Y_1_A_---	SLZ 90 P	14,000	8	1,000	0.37	RF17DRS71S4
						with motor brake
TQ21A1P_E_1_A_---	SLZ 90 P	6,000	52	1,300	1.1	RF17DRS80M2/BE
TQ21A1P_L_1_A_---	SLZ 90 P	8,000	30	1,200	0.75	RF17DRS80S4/BE
ACME screw 36 x 6						without motor brake
TQ21A1P_H_2_A_---	SLZ 90 P	18,000	18	1,400	1.1	RF17DRS80M2
TQ21A1P_P_2_A_---	SLZ 90 P	25,000	10	1,100	0.75	RF17DRS80S4
						with motor brake
TQ21A1P_E_2_A_---	SLZ 90 P	5,000	63	2,000	1.1	RF17DRS80M2/BE
TQ21A1P_G_2_A_---	SLZ 90 P	8,000	37	2,000	1.1	RF17DRS80M2/BE

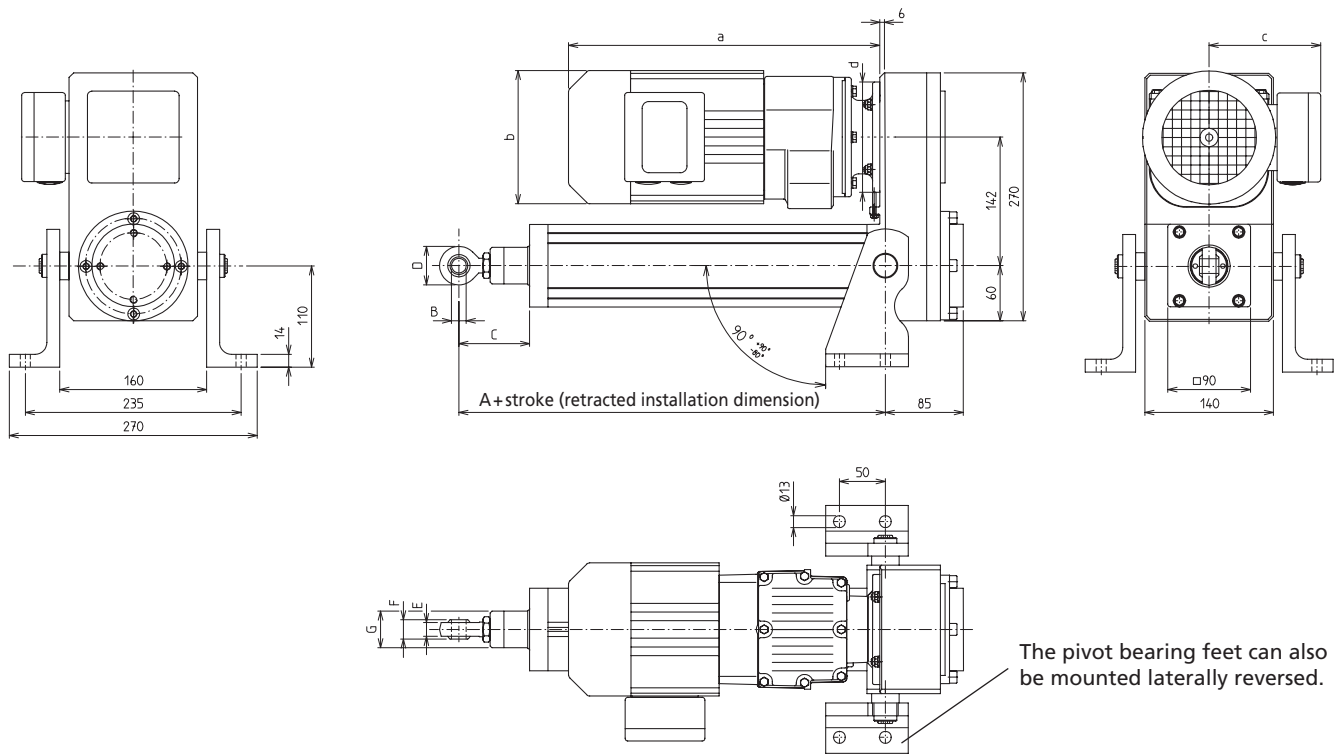


All diagrams show the terminal box in the L position

- 1 = M1 4 = M4
- 2 = M2 5 = M5
- 3 = M3 6 = M6



Version with pivot bearing foot



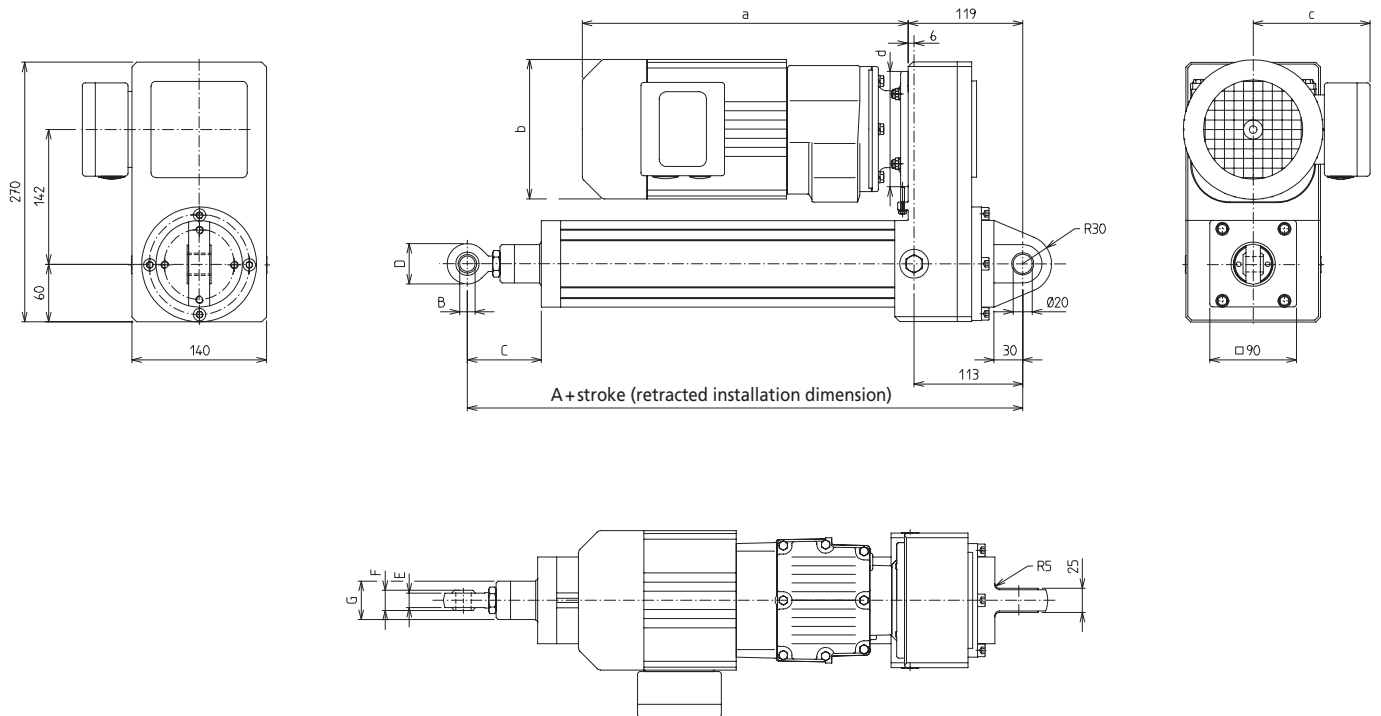
[mm]

3-phase motors	a	b	c	d	Weight [kg]
RF17DRS71	360	Ø 139	119	Ø 120	9
RF17DRS71/BE	428		129		12
RF17DRS80	360	Ø 156	128	Ø 120	11
RF17DRS80/BE	428		139		14

Type	A	B	C	D	E	F	G	Weight [kg]	
								Basic length (dimension A)	Additional weight/ 100 mm
Tr 26 x 5	215	Ø 16	94	42	15	21	Ø 40	12.1	1.5
Tr 36 x 6	245	Ø 20	113	50	18	25	Ø 50	13.1	2.0

SLZ 90 P - Versions

Version with fixing boss



[mm]

3-phase motors	a	b	c	d	Weight [kg]
RF17DRS71	360	Ø 139	119	Ø 120	9
RF17DRS71/BE	428		129		12
RF17DRS80	360	Ø 156	128	Ø 120	11
RF17DRS80/BE	428		139		14

Type	A	B	C	D	E	F	G	Weight [kg]	
								Basic length (dimension A)	Additional weight/100 mm
Tr 26 x 5	328	Ø 16	94	42	15	21	Ø 40	10.3	1.5
Tr 36 x 6	358	Ø 20	113	50	18	25	Ø 50	11.3	2.0

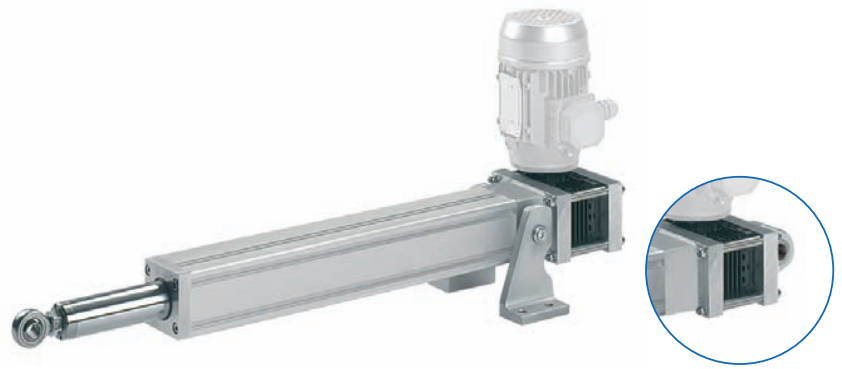


Adjustment of maintenance platform via SLZ 90 heavy duty cylinders.

SLZ 90 W - Versions

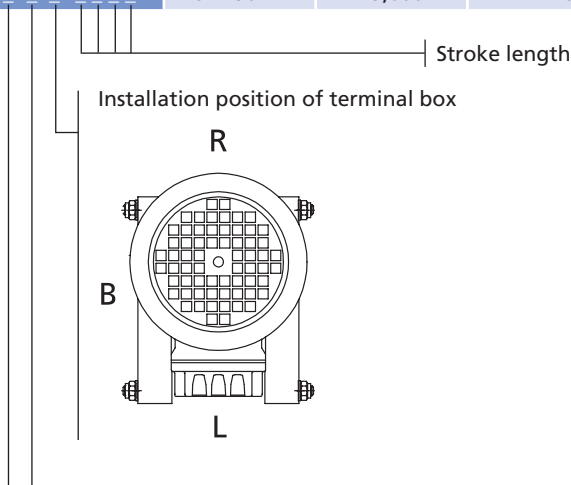
Order information:

- Longer stroke lengths on request
- Other speeds and motors available on request



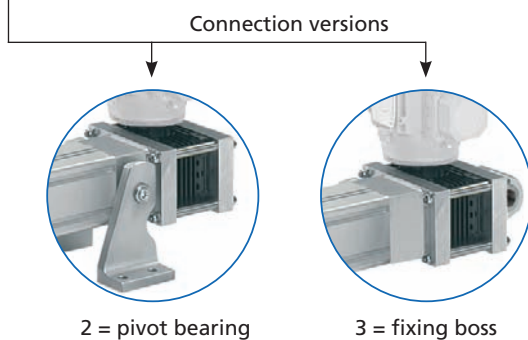
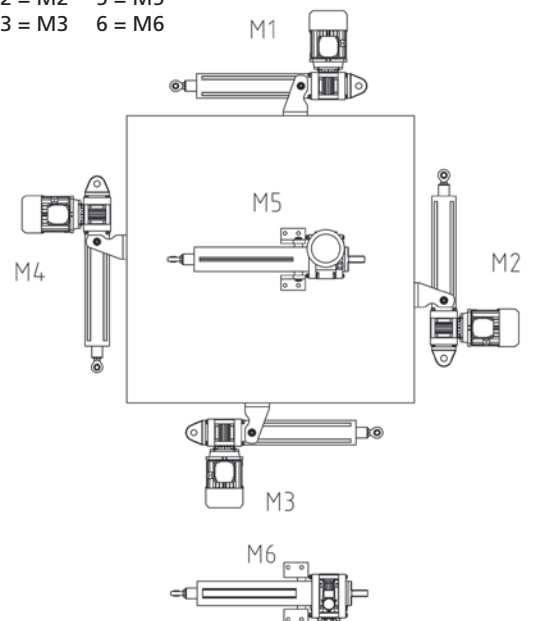
SLZ 90 W versions with ACME screw

Code No.	Type	Max. force F [N]	Max. speed [mm/s]	Max. stroke [mm]	Output [kW]	Motor selection
ACME screw 26 x 5						without motor brake
TQ21A1W_L_1_A_ _ _ _	SLZ 90 W	5,000	23	1,400	0.37	71-4
TQ21A1W_M_1_A_ _ _ _	SLZ 90 W	7,000	15	1,200	0.37	71-4
TQ21A1W_N_1_A_ _ _ _	SLZ 90 W	9,000	11	1,000	0.37	71-4
TQ21A1W_X_1_A_ _ _ _	SLZ 90 W	11,500	5	900	0.25	63-4
TQ21A1W_T_1_A_ _ _ _	SLZ 90 W	13,000	7	900	0.37	71-4
ACME screw 36 x 6						without motor brake
TQ21A1W_V_2_A_ _ _ _	SLZ 90 W	22,000	7	1,300	0.55	71-4
TQ21A1W_J_2_A_ _ _ _	SLZ 90 W	23,000	9	1,200	0.75	80-4
TQ21A1W_E_2_A_ _ _ _	SLZ 90 W	24,000	14	1,200	1.1	80-4
TQ21A1W_B_2_A_ _ _ _	SLZ 90 W	25,000	18	1,200	1.5	90-4

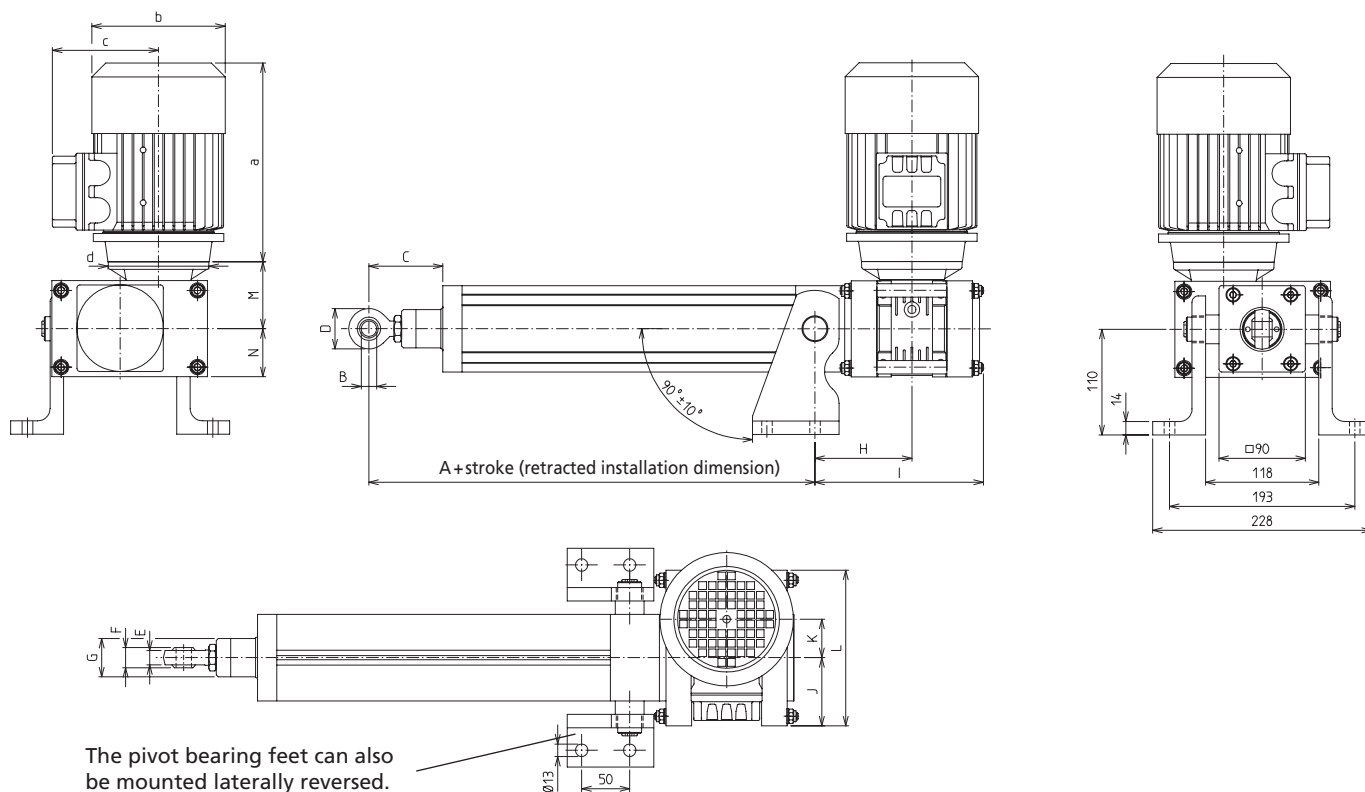


All diagrams show the terminal box in the L position

- 1 = M1 4 = M4
- 2 = M2 5 = M5
- 3 = M3 6 = M6



Version with pivot bearing foot



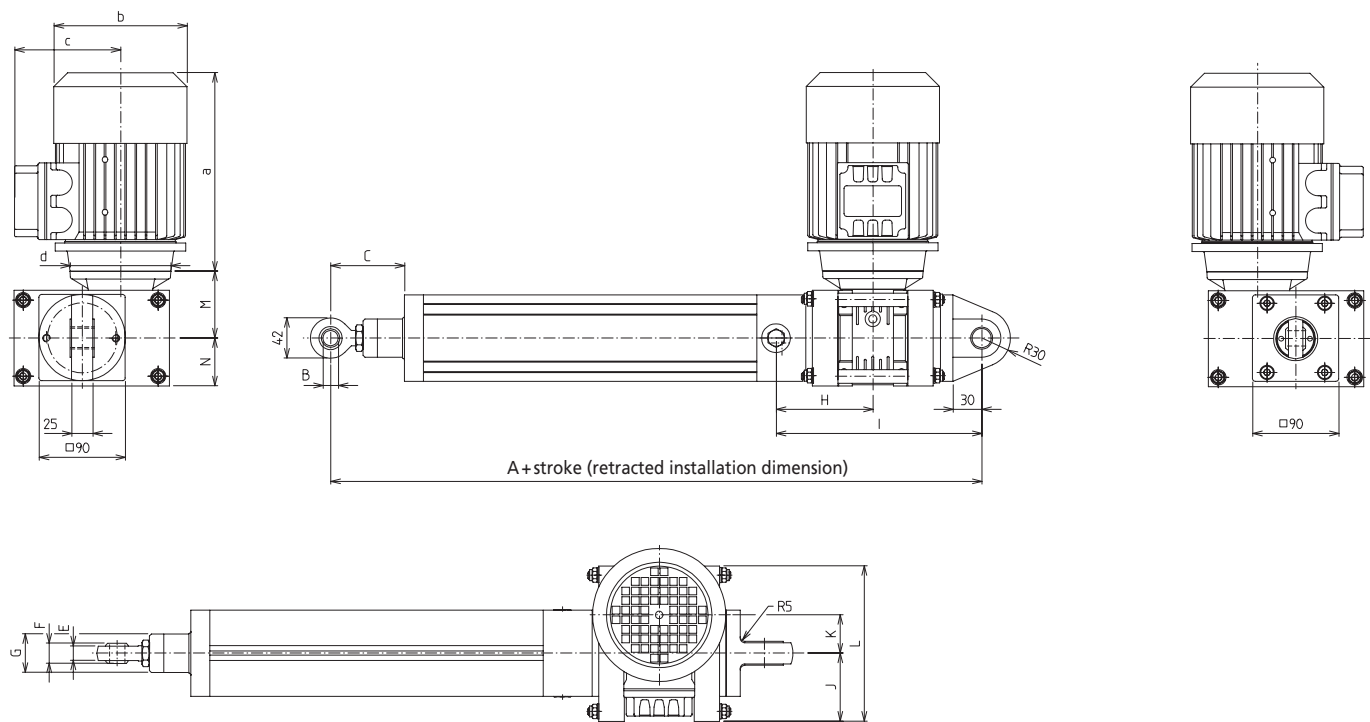
[mm]

3-phase motors	a	b	c	d	Weight [kg]
63-4	189	Ø 124	104	Ø 105	6
71-4	218	Ø 140	109	Ø 105	7
80-4	237	Ø 156	123	Ø 120	10
90-4	279	Ø 178	128	Ø 140	14

Type	A	B	C	D	E	F	G	H	I	J	K	L	M	N	Weight [kg]	
															Basic length (dimension A)	Additional weight/100 mm
Tr 26 x 5	215	Ø 16	94	42	15	21	Ø 40	101.5	176	71	40	162	70	50	14.0	1.5
Tr 36 x 6	245	Ø 20	113	50	18	25	Ø 50	117.5	212	98	63	231.5	109	72	21.7	2.0

SLZ 90 W – Fixing/Position determination

Version with fixing boss



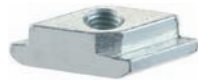
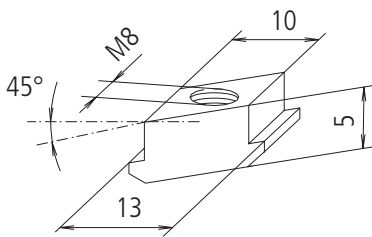
[mm]

Three-phase motors	a	b	c	d	Weight [kg]
63-4	189	Ø 124	104	Ø 105	6
71-4	218	Ø 140	109	Ø 105	7
80-4	237	Ø 156	123	Ø 120	10
90-4	279	Ø 178	128	Ø 140	14

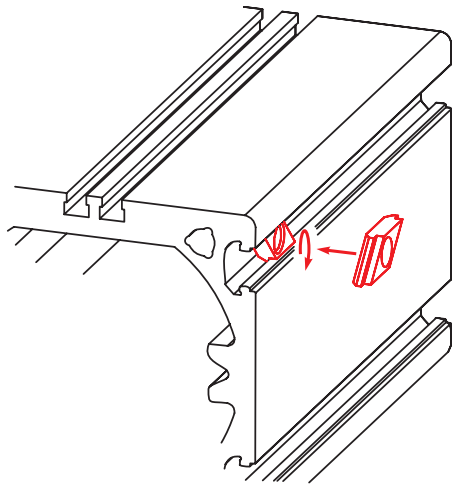
Type	A	B	C	D	E	F	G	H	I	J	K	L	M	N	Weight [kg]	
															Basic length (dimension A)	Additional weight/100 mm
Tr 26 x 5	430	Ø 16	94	42	15	21	Ø 40	101.5	215	71	40	162	70	50	12.2	1.5
Tr 36 x 6	493	Ø 20	113	50	18	25	Ø 50	117.5	248	98	63	231.5	109	72	19.9	2.0

Slot stone -R-

- Slot stones facilitate the fitting of attachments to the cylinder. To this end, they can be swivelled into the slot from above (Type -R-).



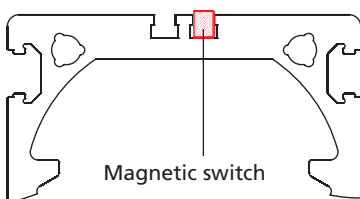
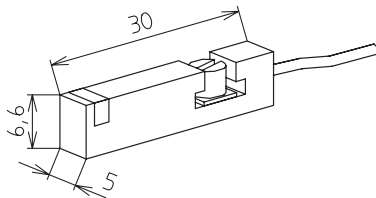
Type -R-



Code No.	Type	F [N]
4006223	Slot stone -R- M8	4,000

Magnetic switch

- Signals from the magnetic switch can be collected and evaluated by a customer-provided control unit (such as a PLC).
- The switch can be retrofitted in the lateral slot (protected by a cover profile as standard)



Magnetic switch

Code No.	Type
qzd050334	Magnetic switch, NC contact*, cable length 5.3 m

*Magnetic switch, NO contact, available on request

Magnetic switch – Technical data

	NC contact
Voltage	10-30 V DC
Current consumption	< 10 mA
Output current	Max. 100 mA
Output type	PNP
Function indication	LED
Ambient temperature	-25°C to +85°C
Protection class	IP 67