



RK ROSE+KRIEGER



Width, length and height adjustment

Rodless style.....Page 26 - 245

RodstylePage 258 - 385

Drive (elec. cylinder)Page 258 - 311

Drive +
Guide (lifting column)..... Page
312 - 385

Move-Tec

Move-Tec overview

Rodless style | Drive + Guide

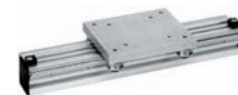
Single tube actuators

The data refers to standard sizes

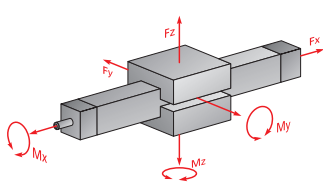


Features	RK LightUnit from page 26	E from page 42
Size	30	18, 30, 40, 50, 60, 80
Max. travel	920 mm	890-2740 mm
Fx max.	300 N	400-4500 N
Fy max.	550 N	90-5500 N
Fz max.	1210 N	60-5650 N
Mx max.	2.5 Nm	1.5-70 Nm
My max.	5.5 Nm	4-170 Nm
Mz max.	5.5 Nm	4-170 Nm
Screw, right or lefthand thread	●	●
Screw, right and lefthand thread	●	●
Screw, split		●
Guide (without drive)		
Features	✓The "light option" for simple hand adjustments	✓Flexible all-rounder – a simply unbeatable price/performance ratio

Profile actuators/guides



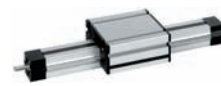
Features	PLM from page 136	RK Compact from page 156	SQL from page 172
Size	20, 40 x 20	30, 40, 80, 120	40, 60, 80, 120, 160
Max. travel	855 mm	130-400 mm	5750 mm
Fx max.	125 N	50-215 N	–
Fy max.	160-200 N	160-1150 N	1500-2500 N
Fz max.	180-220 N	160-1150 N	1000-1500 N
Mx max.	3-4 Nm	3-32 Nm	50-134 Nm
My max.	10-14 Nm	3-59 Nm	70-121 Nm
Mz max.	10-14 Nm	3-59 Nm	140-243 Nm
Screw, right or lefthand thread	●	●	
Screw, right and lefthand thread	●	●	
Screw, split	●		
Guide (without drive)	●	●	●
Features	✓The small range for positioning small loads	✓Flat short-stroke linear actuator for hand adjustment – with excellent price-performance ratio	✓Low-cost guide for medium to heavy loads



Twin tube actuators/guides



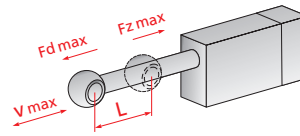
RE from page 74	EP(X) from page 82	COPAS from page 108
30, 40	18, 30, 40, 50, 60, 80	20, 30, 40
3000 mm	320-2610 mm	1300-2300 mm
-	400-4500 N	800-1600 N
330-600 N	200-14000 N	700-3500 N
1600-2400 N	100-9100 N	1000-5200 N
65-155 Nm	20-650 Nm	30-234 Nm
65-155 Nm	30-780 Nm	22-218 Nm
20-65 Nm	35-1100 Nm	32-294 Nm
•	•	•
•	•	•
•	•	•
•	•	•
✓ Robust guide for simple adjustment of medium loads	✓ The robust twin tube unit – compensates for high bending moments during manual and motor-driven adjustments	✓ Elegant anodised aluminium design ensures precision running even for high load ratings



quad® from page 180	PLS from page 210	RK DuoLine S from page 230
30, 40, 50, 60, 80	30, 40, 50, 60, 80	50, 80, 120 x 80
1375-4157 mm	830-3000 mm	2268-2984 mm
800-2500 N	340-3050 N	1400-3400 N
600-6000 N	790-2550 N	930-5000 N
600-6000 N	790-2550 N	1100-6000 N
6-80 Nm	14-124 Nm	45-380 Nm
11-140 Nm	20-168 Nm	65-430 Nm
8-85 Nm	22-169 Nm	56-370 Nm
•	•	•
•	•	•
•	•	•
•	•	•
✓ Compact and versatile linear actuator for motor-driven and manual adjustment of medium loads	✓ Motor-driven or manual adjustment of medium to heavy loads – easy for the PLS profile linear unit	✓ The all-rounder with encapsulated drive/guiding concept

Move-Tec overview

Rodstyle | Drive + Guide



L = Travel
 F_d = Push force
 F_z = Pull force
V = Travel speed

All data refer to standard sizes

Cylinders performance class 1



Cylinders performance class 2



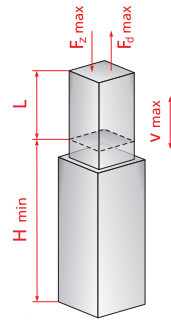
Heavy duty cylinders



Features	M9 page 258	010 page 262	015 page 268	LAMBDA page 272	LZ60 page 276	LZ80 page 286	SLZ 90 page 298
Max. travel	50 mm	40-100 mm	300 mm	600 mm	600 mm	1005 mm	2000 mm
Max. push force	300 N	500 N	1000 N	6000 N	4000 N	10000 N	25000 N
Max. pull force	300 N	500 N	1000 N	4000 N	4000 N	10000 N	25000 N
Max. travel speed	14 mm/s	22 mm/s	100 mm/s	21 mm/s	110 mm/s	27 mm/s	77 mm/s
Protection class	IP 30	IP 40 IP 54	IP 54	IP 66	IP 54	IP 54 IP 66	IP 54
Integrated limit switch	●	+ (adjustable)	+ (adjustable)	●	●	●	
Can be synchronised by means of control system				●	●		Motor-dependent
Fitted with signal contact	●	●	●	●	●	●	
Integr. control					●		
Potentiometer	●	●	●	●			
Features	<ul style="list-style-type: none"> ✓ Lightweight ✓ Bellows 	<ul style="list-style-type: none"> ✓ Range of lifting speeds 	<ul style="list-style-type: none"> ✓ Rugged design ✓ Adjustable travel 	<ul style="list-style-type: none"> ✓ Clamping protection optional 	<ul style="list-style-type: none"> ✓ Various connections for industrial applications 	<ul style="list-style-type: none"> ✓ Ball screw available ✓ Industrial cylinder 	



Rodstyle | Drive + Guide



L = Travel
H = Installation dimension
F_d = Push force
F_z = Pull force
V = Travel speed

Two-stage lifting columns (up to 500 mm travel)

Multi-stage lifting columns more than 500 mm travel

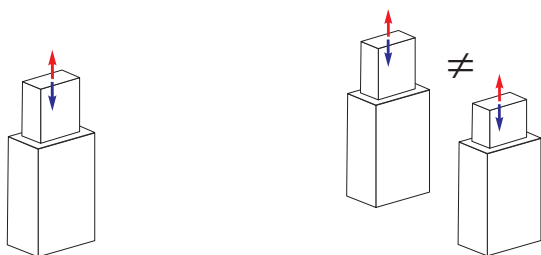
All data refer to standard sizes



Features	Multilift from page 312	RK Slimlift from page 324	RK Powerlift from page 336	RK Powerlift telescope from page 360	Alpha Colonne from page 372	LAMBDA Colonne from page 380
Max. travel	498 mm	500 mm	500 mm	650 mm	700 mm	600 mm
Max. push force	3000 N	4000 N	3000 N	1600 N	3000 N	4500 N
Max. pull force	1000 N	2000 N	3000 N	800 N	3000 N	4500 N
Max. travel speed	8/16 mm/s	8-32 mm/s	10-50 mm/s	15-30 mm/s	8-18 mm/s	8-20 mm/s
Protection class	IP 20	IP 30	IP 30	IP 30	IP 30	IP 54 IP 40
Integrated limit switch	•	•	•	•	•	•
Can be synchronised by means of control system	•	•	•	•	•	•
Integr. control			•	•	•	
Manual version optional	•	•	•			
Features	✓ Quadruple bearing with POM slide bearing shells	✓ Rod-shaped design and extremely quiet operation	✓ High moment capacity	✓ Optimal stroke/installation height ratio	✓ Suitable for push and pull force	✓ Guides set to minimum backlash

Preferred field of application

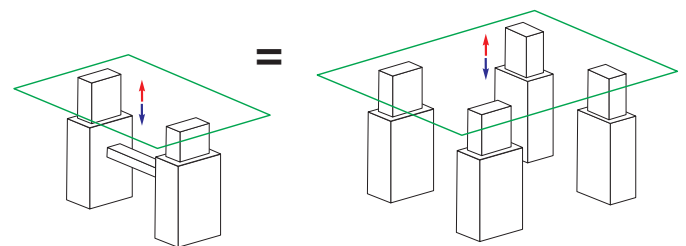
Mono columns
(single or joint movement!)



Individual operation / Mono operation

Parallel operation

Synchronised columns (2-32 pc.)
(can be moved synchronously)



Synchronised operation

Multiple column system