

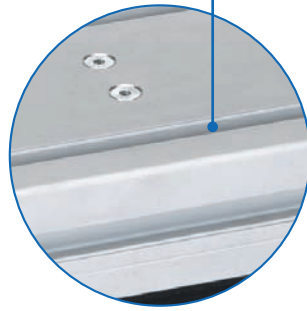
Roller guide actuator/guides - PL/PLZ/PLZ-i

Roller guide with wide timing-belt



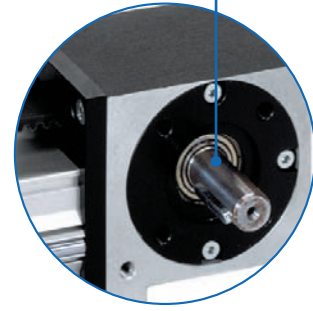
Wide timing-belt

- ✓ Transmission of large axial forces



Fixing slots

- ✓ Simple connection of accessories



Shaft configuration

- ✓ Freely configurable acc. to your requirements

Features:

- Guide profile and carriage made of extruded aluminium
- BLOCAN® slot geometry in carriage
- Use of wide timing-belts up to 40 mm
- Carriage guidance by means of rollers
- Versions available with internal timing-belt (in guide profile)
- Version with two contradiirectional carriages

Options:

- Longer stroke lengths
- Second free-running carriage
- Extended carriage

PL/PLZ/PLZ-i - Table of contents

Properties/Technical data		<ul style="list-style-type: none"> ■ General information/operating conditions ... 392 ■ Load data..... 393 ■ No-load torques 392
Versions (Dimensions, order numbers)		<ul style="list-style-type: none"> ■ PL guide unit 394 ■ PLZ timing-belt unit 396 ■ PLZ R/L timing-belt unit 398 (two contradirectional carriages) ■ Unit with internal timing-belt PLZ-i..... 400 ■ Unit with internal timing-belt PLZ-i R/L..... 402 (two contradirectional carriages)
		<ul style="list-style-type: none"> ■ Fixing plate..... 404 ■ Slot stones 404
Accessories	Fixing	<ul style="list-style-type: none"> ■ Connecting/transmission unit..... 406 - 407 ■ Motor adaptor/couplings 408 - 411
	Drive	<ul style="list-style-type: none"> ■ Limit switch 412 - 414
	Position determination	

PLZ/PLZ-i – Technical data

General information/operating conditions

Design	Aluminium profile, timing-belt drive
Guide	Rollers, external
Installation position	Any position
Repeatability	0.05 mm
Ambient temperature	0°C to +60°C
Protection class	IP 20

Type	Timing-belt	Pitch/width	Eff. diam. of pulley [mm]	Max. input torque [Nm]	Max. speed [m/s]	Max. acceleration [m/s ²]
PLZ (timing-belt unit)						
PLZ 30	GT 5MR	5/12	23.87	5	5	20
PLZ 40	GT 5MR	5/20	27.08	8.5		
PLZ 50	GT 5MR	5/25	38.20	20		
PLZ 60	GT 8MR	8/28	56.02	55	10	
PLZ 80	GT 8MR	8/40	61.12	90		
PLZ-i with internal timing-belt						
PLZ-i 30	GT 3MR	3/6	13.37	1	0.5	20
PLZ-i 40	GT 3MR	3/9	17.19	2		
PLZ-i 50	GT 5MR	5/15	22.28	5		
PLZ-i 60	GT 5MR	5/20	27.06	9		
PLZ-i 80	GT 5MR	5/30	33.42	19		

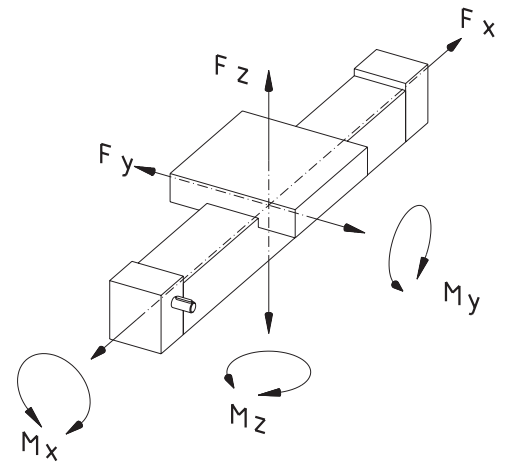
No-load torque

[Nm]

Type	PLZ	PLZ-i
30	0.25	0.35
40	0.35	0.45
50	0.60	0.70
60	0.80	0.90
80	1.00	1.10

Load data*

- F Force [N]
 M Moment [Nm]
 I Geometric moment of inertia [cm⁴]



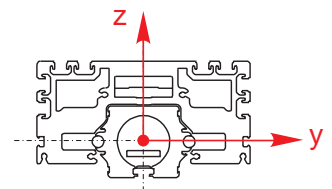
* With reference to carriage (static values, guide element resting on full surface)

	F _x	F _y	F _z	M _x	M _y	M _z
PL (roller guide)						
PL 30	–	790	790	14	20	22
PL 40	–	1020	1020	23	33	33
PL 50	–	1020	1020	28	49	49
PL 60	–	2550	2550	99	143	143
PL 80	–	2550	2550	124	168	169
PLZ with external timing-belt						
PLZ 30	340	790	790	14	20	22
PLZ 40	610	1020	1020	23	33	33
PLZ 50	1000	1020	1020	28	49	49
PLZ 60	1790	2550	2550	99	143	143
PLZ 80	2810	2550	2550	124	168	169
PLZ-i with internal timing-belt						
PLZ-i 30	100	790	790	14	20	22
PLZ-i 40	205	1020	1020	23	33	33
PLZ-i 50	400	1020	1020	28	49	49
PLZ-i 60	610	2550	2550	99	143	143
PLZ-i 80	1100	2550	2550	124	168	169

Geometric moment of inertia

 [cm⁴]

Type	I _y	I _z
30	4.3	6.4
40	14.4	19.9
50	35.5	44.3
60	77.3	111.5
80	201.9	280.7



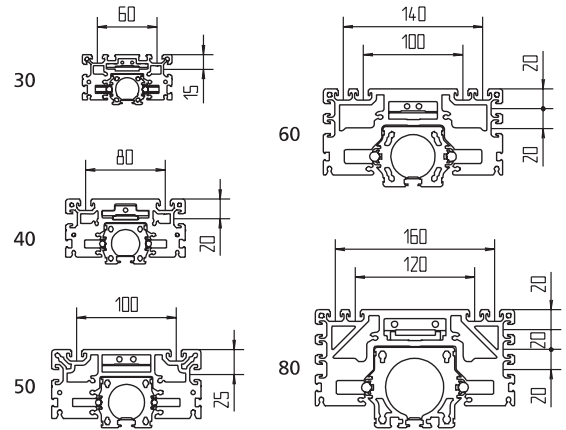
PL - Versoins

Order information:

- Longer travel lengths on request
- Second or extended carriage available on request

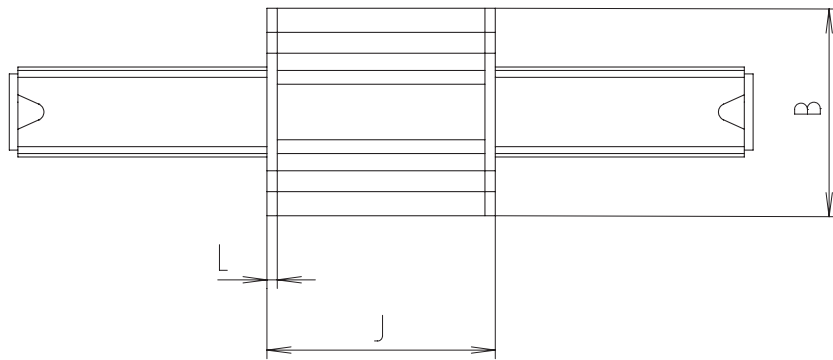
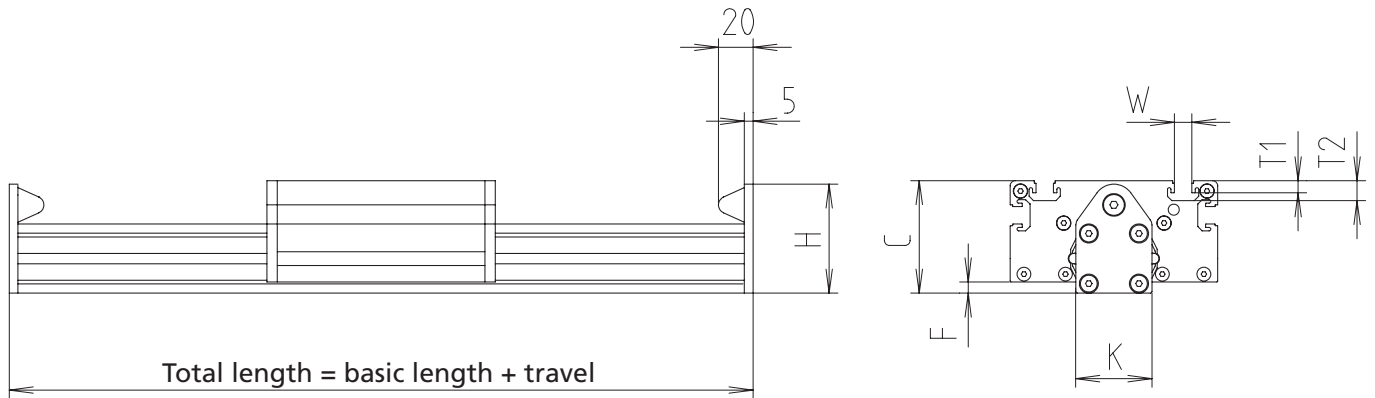
Version

■ Guide



Code No.	Type	Basic length	B	C	F	H	J	K
MMA3030AA	PL-II 30	142	90	50	4.5	50	102	34
MMA4040AA	PL-II 40	172	120	65	6.5	63	132	44
MMA5050AA	PL-II 50	202	150	78	9.0	74	162	54
MMA6060AA	PL-II 60	232	180	98	11.5	84	192	72
MMA8080AA	PL-II 80	252	200	118	21.5	104	212	92

----- Total length = basic length + travel [mm]



[mm]

L	T1	T2	W	Max. travel	Mass [kg]	
					Basic length	per 100 mm travel
6	8.5	4.5	10.1	5860	1.0	0.16
6	11.5	7	10.1	5830	1.9	0.28
6	11.5	7	10.1	5800	3.5	0.41
6	11.5	7	10.1	5770	5.9	0.60
6	11.5	7	10.1	5750	7.9	0.90

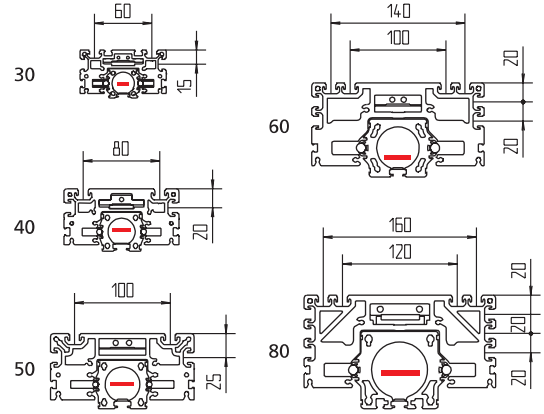
PLZ - Versions

Order information:

- Longer travel lengths on request
- Second non driven or extended carriage available on request

Version

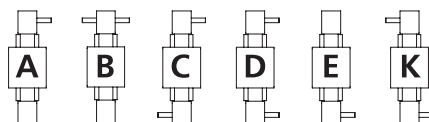
■ Timing-belt unit

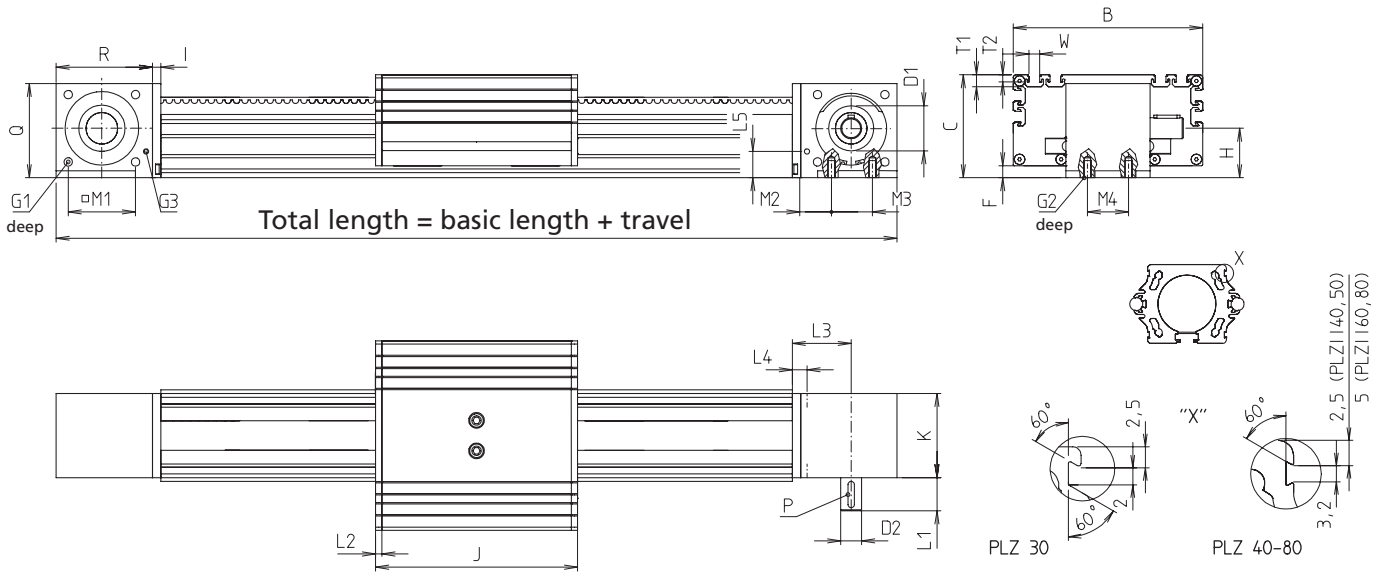


Code No.	Type	Timing-belt	Basic length	B	C	D1	D2	F	G1	G2	G3	H	I	J
FZA3030_A	PLZ 30	5M-12	220	90	50	22 ^{H7}	10	4.5	M4	M5	M5	25.5	6	102
FZA4040_A	PLZ 40	5M-20	270	120	65	28 ^{H7}	10	6.5	M5	M6	M5	35.1	8	132
FZA5050_A	PLZ 50	5M-25	332	150	78	35 ^{H7}	14	9	M6	M6	M5	43	8	162
FZA6060_A	PLZ 60	8M-28	391	180	98	70 ^{H7}	20	11.5	M8	M8	M5	47	8	192
FZA8080_A	PLZ 80	8M-40	428	200	118	70 ^{H7}	25	21.5	M8	M8	M5	66	10	212

----- Total length = basic length + travel [mm]

Configuration of drive shaft





[mm]

K	L1	L2	C	L4	L5	M1	M2	M3	M4	P	Q	R	T1	T2	W	Max. travel	Mass [kg]	
																	Basic length	per 100 mm travel
38	25	6	34	13	10	21	17	20	20	3 x 3 x 20	48	53	8.5	4.5	10.1	5498	1.23	0.17
48	28	6	40	16	15	29	20	20	20	3 x 3 x 20	61	61	11.5	7	10.1	5468	2.76	0.29
58	30	6	48	16	14	38	16	40	20	5 x 5 x 25	77	77	11.5	7	10.1	5438	5.17	0.41
80	31.5	6	56	16	29	64	30	40	40	6 x 6 x 25	89.5	91.5	11.5	7	10.1	5808	9.45	0.63
100	31.5	6	63	18	29	64	35	40	40	8 x 7 x 25	109.5	98	11.5	7	10.1	5788	14.05	0.93

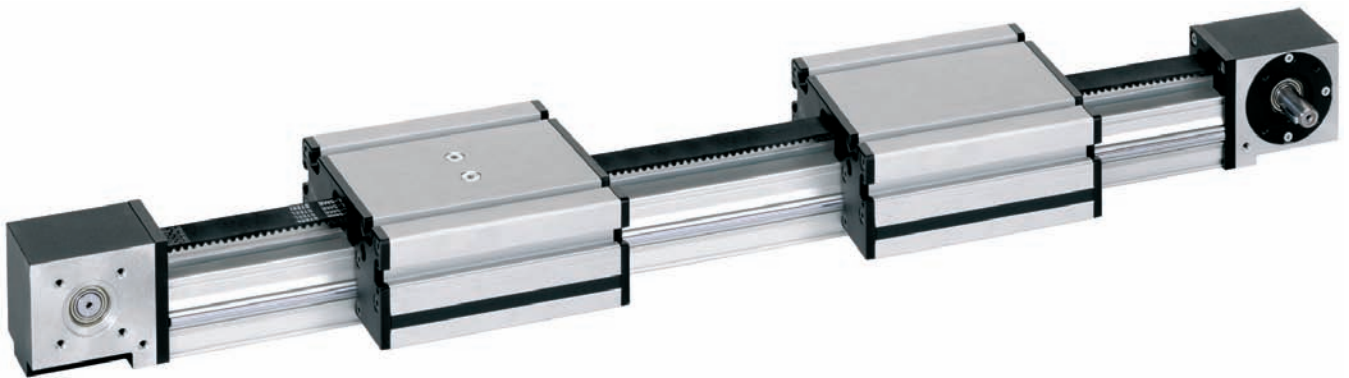
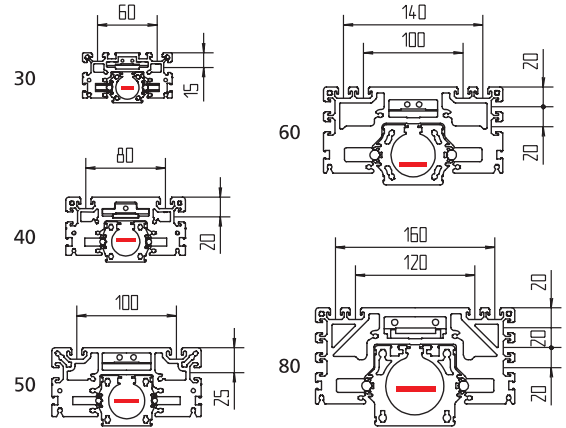
PLZ R/L -Versions

Order information:

- Longer travel lengths on request
- Extended carriage available on request

Version

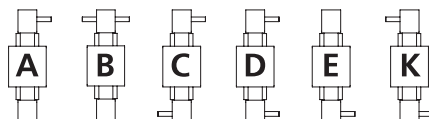
- Timing-belt unit
- Two opposite moving carriages

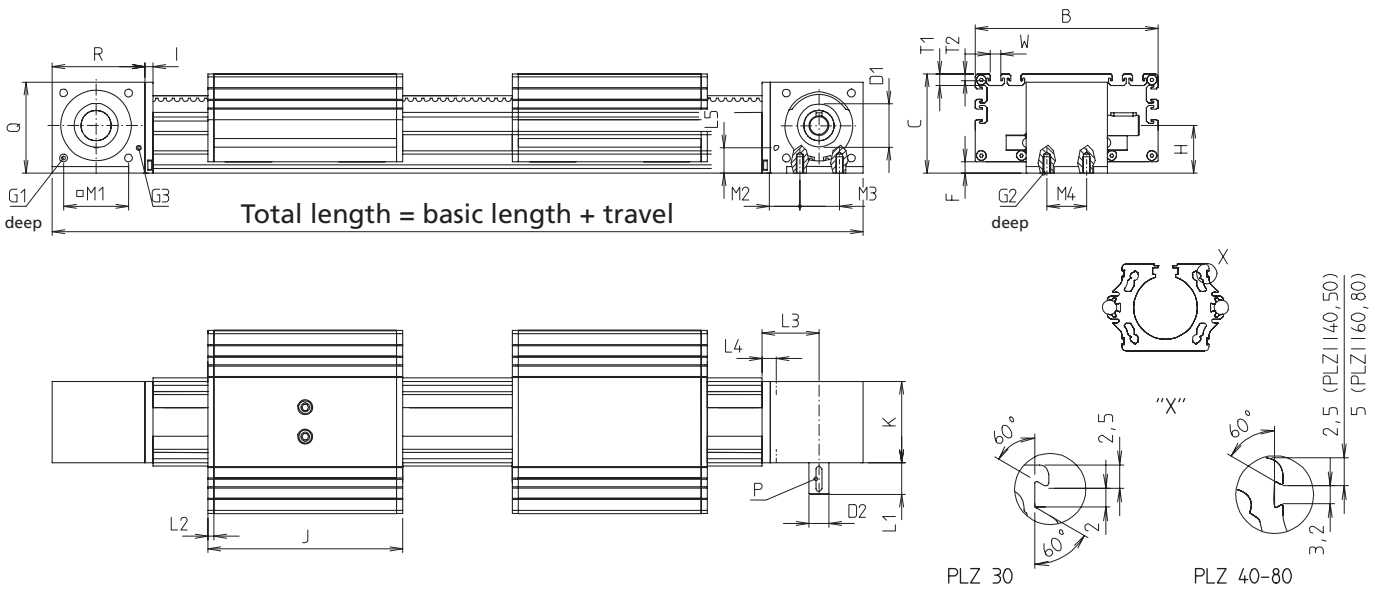


Code No.	Type	Timing-belt	Basic length	B	C	D1	D2	F	G1	G2	G3	H	I	J
FZC3030_A	PLZ 30	5M-12	322	90	50	22 ^{H7}	10	4.5	M4	M5	M5	25.5	6	102
FZC4040_A	PLZ 40	5M-20	402	120	65	28 ^{H7}	10	6.5	M5	M6	M5	35.1	8	132
FZC5050_A	PLZ 50	5M-25	494	150	78	35 ^{H7}	14	9	M6	M6	M5	43	8	162
FZC6060_A	PLZ 60	8M-28	583	180	98	70 ^{H7}	20	11.5	M8	M8	M5	47	8	192
FZC8080_A	PLZ 80	8M-40	640	200	118	70 ^{H7}	25	21.5	M8	M8	M5	66	10	212

----- Total length = basic length + travel [mm]

Configuration of drive shaft





[mm]

K	L1	L2	C	L4	L5	M1	M2	M3	M4	P	Q	R	T1	T2	W	Max. travel	Mass [kg]	
																	Basic length	per 100 mm travel
38	25	6	34	13	10	21	17	20	20	3 x 3 x 20	48	53	8.5	4.5	10.1	5396	1.89	0.17
48	28	6	40	16	15	29	20	20	20	3 x 3 x 20	61	61	11.5	7	10.1	5336	4.38	0.29
58	30	6	48	16	14	38	16	40	20	5 x 5 x 25	77	77	11.5	7	10.1	5276	8.26	0.41
80	31.5	6	56	16	29	64	30	40	40	6 x 6 x 25	89.5	91.5	11.5	7	10.1	5616	14.50	0.63
100	31.5	6	63	18	29	64	35	40	40	8 x 7 x 25	109.5	98	11.5	7	10.1	5576	20.63	0.93

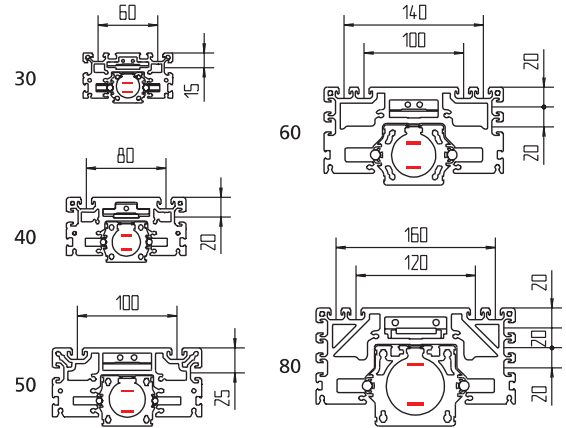
PLZ-i - Versions

Order information:

- Longer travel lengths on request
- Second non driven or extended carriage available on request

Version

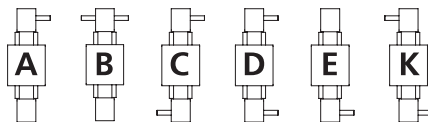
■ Unit with internal timing-belt

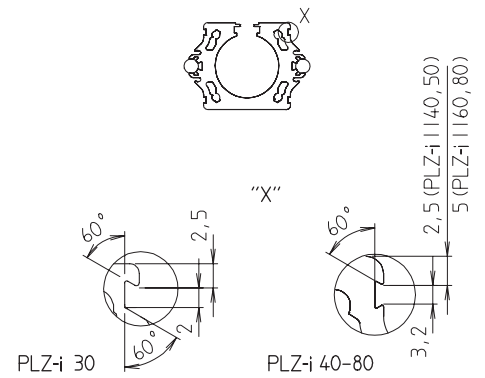
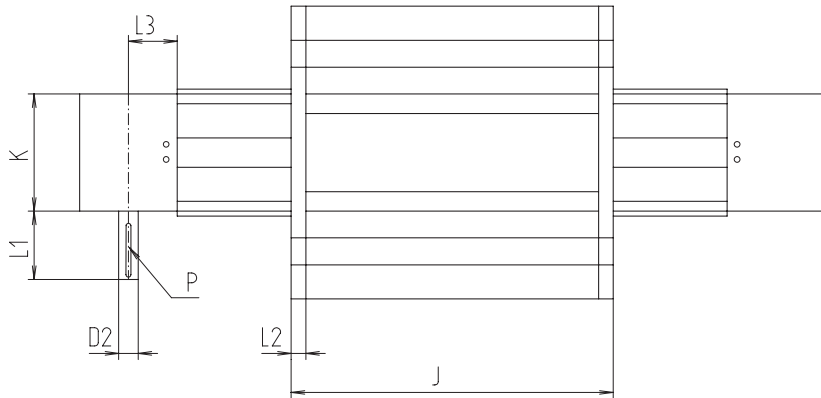
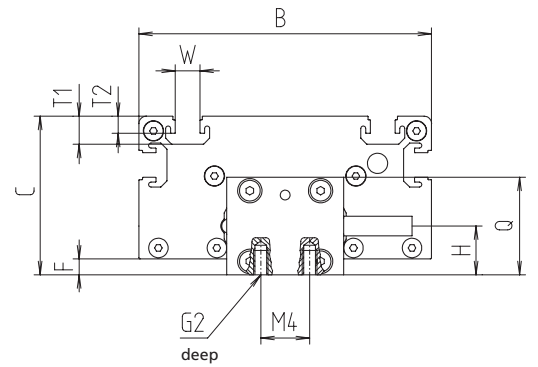
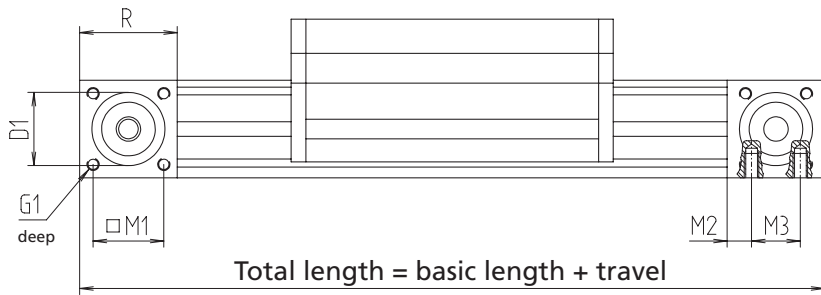


Code No.	Type	Timing-belt	Basic length	B	C	D1	D2	F	G1	G2	H	J	K
FZI3030_A	PLZ-i 30	3M-6	176	90	50	22 ^{J6}	6	4.5	M4	M5	15	102	38
FZI4040_A	PLZ-i 40	3M-9	226	120	65	30 ^{J6}	8	6.5	M5	M6	20	132	48
FZI5050_A	PLZ-i 50	5M-15	276	150	78	35 ^{J6}	10	9	M6	M6	25	162	58
FZI6060_A	PLZ-i 60	5M-20	318	180	98	35 ^{J6}	12	11.5	M6	M6	30	192	72
FZI8080_A	PLZ-i 80	5M-30	378	200	118	50 ^{J7}	14	21.5	M8	M8	40	212	92

----- Total length = basic length + travel [mm]

Configuration of drive shaft





[mm]

L1	L2	C	M1	M2	M3	M4	P	Q	R	T1	T2	W	Max. travel	Mass [kg]	
														Basic length	per 100 mm travel
25	6	15	21	6	20	-	2 x 2 x 20	30	37	8.5	4.5	10.1	4590	0.92	0.15
28	6	20	29	10	20	-	2 x 2 x 20	40	47	11.5	7	10.1	5090	2.10	0.28
30	6	25	38	15	20	20	3 x 3 x 20	50	57	11.5	7	10.1	5398	3.92	0.40
30	6	30	43	20	20	20	4 x 4 x 25	60	63	11.5	7	10.1	5808	7.15	0.61
38	6	40	64	20	40	40	5 x 5 x 32	80	83	11.5	7	10.1	5788	10.52	0.91

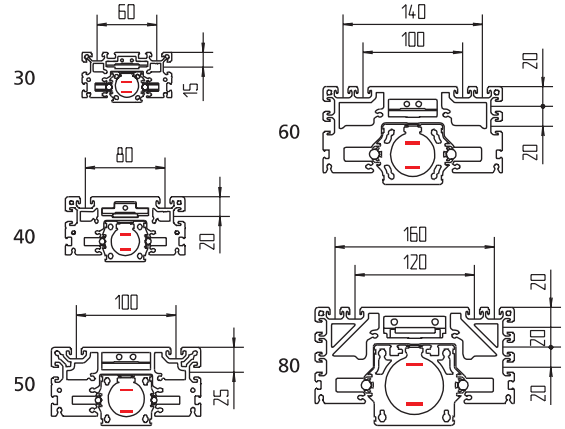
PLZ-i R/L - Versoins

Order information:

- Longer travel lengths on request
- Extended carriage available on request

Version

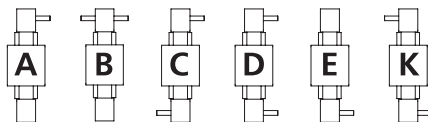
- Unit with internal timing-belt
- Two opposite moving carriages

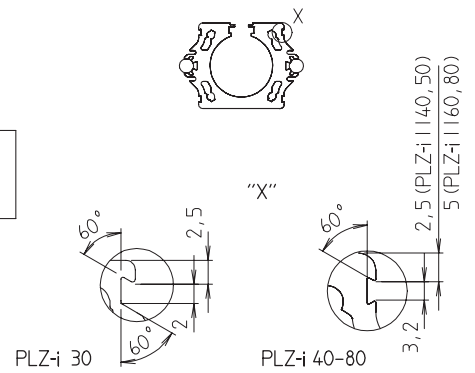
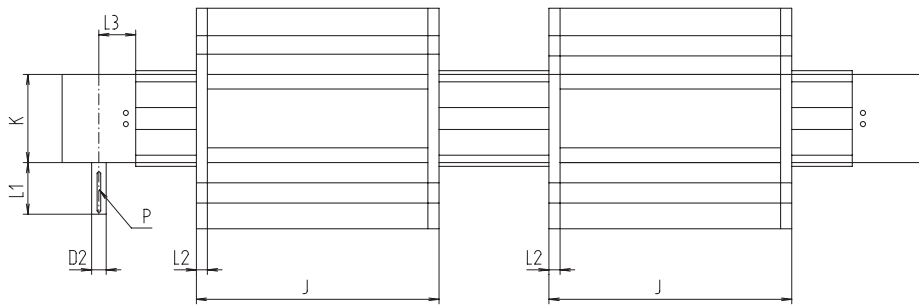
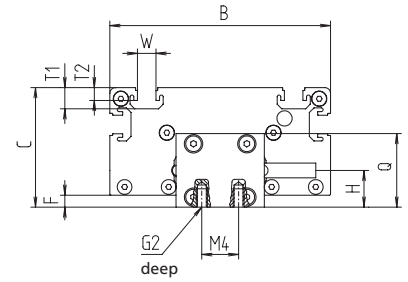
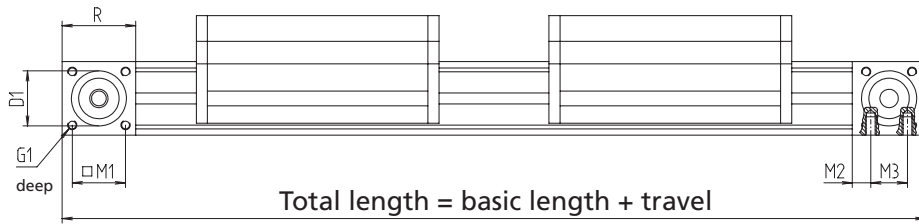


Code No.	Type	Timing-belt	Basic length	B	C	D1	D2	F	G1	G2	H	J	K
FZK3030_A	PLZ-i 30	3M-6	278	90	50	22 ^{J6}	6	4.5	M4	M5	15	102	38
FZK4040_A	PLZ-i 40	3M-9	358	120	65	30 ^{J6}	8	6.5	M5	M6	20	132	48
FZK5050_A	PLZ-i 50	5M-15	438	150	78	35 ^{J6}	10	9	M6	M6	25	162	58
FZK6060_A	PLZ-i 60	5M-20	510	180	98	35 ^{J6}	12	11.5	M6	M6	30	192	72
FZK8080_A	PLZ-i 80	5M-30	590	200	118	50 ^{J7}	14	21.5	M8	M8	40	212	92

----- Total length = basic length + travel [mm]

Configuration of drive shaft





[mm]

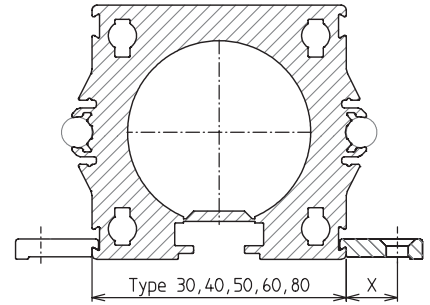
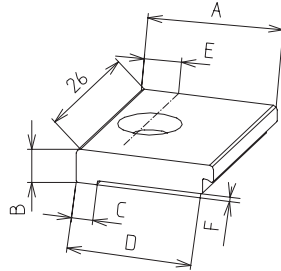
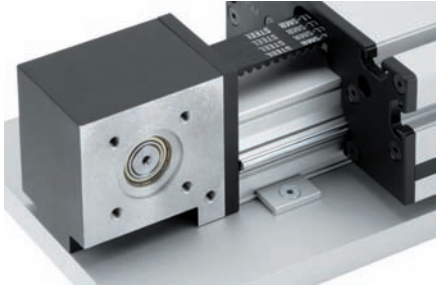
L1	L2	C	M1	M2	M3	M4	P	Q	R	T1	T2	W	Max. travel	Mass [kg]	
														Basic length	per 100 mm travel
25	6	15	21	6	20	-	2 x 2 x 20	30	37	8.5	4.5	10.1	4490	1.61	0.17
28	6	20	29	10	20	-	2 x 2 x 20	40	47	11.5	7	10.1	4960	3.72	0.29
30	6	25	38	15	20	20	3 x 3 x 20	50	57	11.5	7	10.1	5266	7.02	0.41
30	6	30	43	20	20	20	4 x 4 x 25	60	63	11.5	7	10.1	5616	12.33	0.63
38	6	40	64	20	40	40	5 x 5 x 32	80	83	11.5	7	10.1	5576	17.54	0.93

PL/PLZ/PLZ-i – Fixing

Fixing plate

- Plate for fixing the linear unit to a substructure
- The fixing plates can also be retrofitted and moved axially

Scope of delivery: Pack of 10 without screws

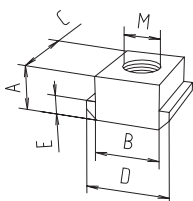


[mm]									
Code No.	Type	Version	A	B	C	D	E	F	X
95510	PLZ 30, 40, 50	Counterbore for M5 screw, DIN 7991	16.3	4	2.5	15	7	0.5	8
95511	PLZ 60, 80	Counterbore for M6 screw, DIN 7984	23.8	7.5	3.5	22.5	12.5	1	10

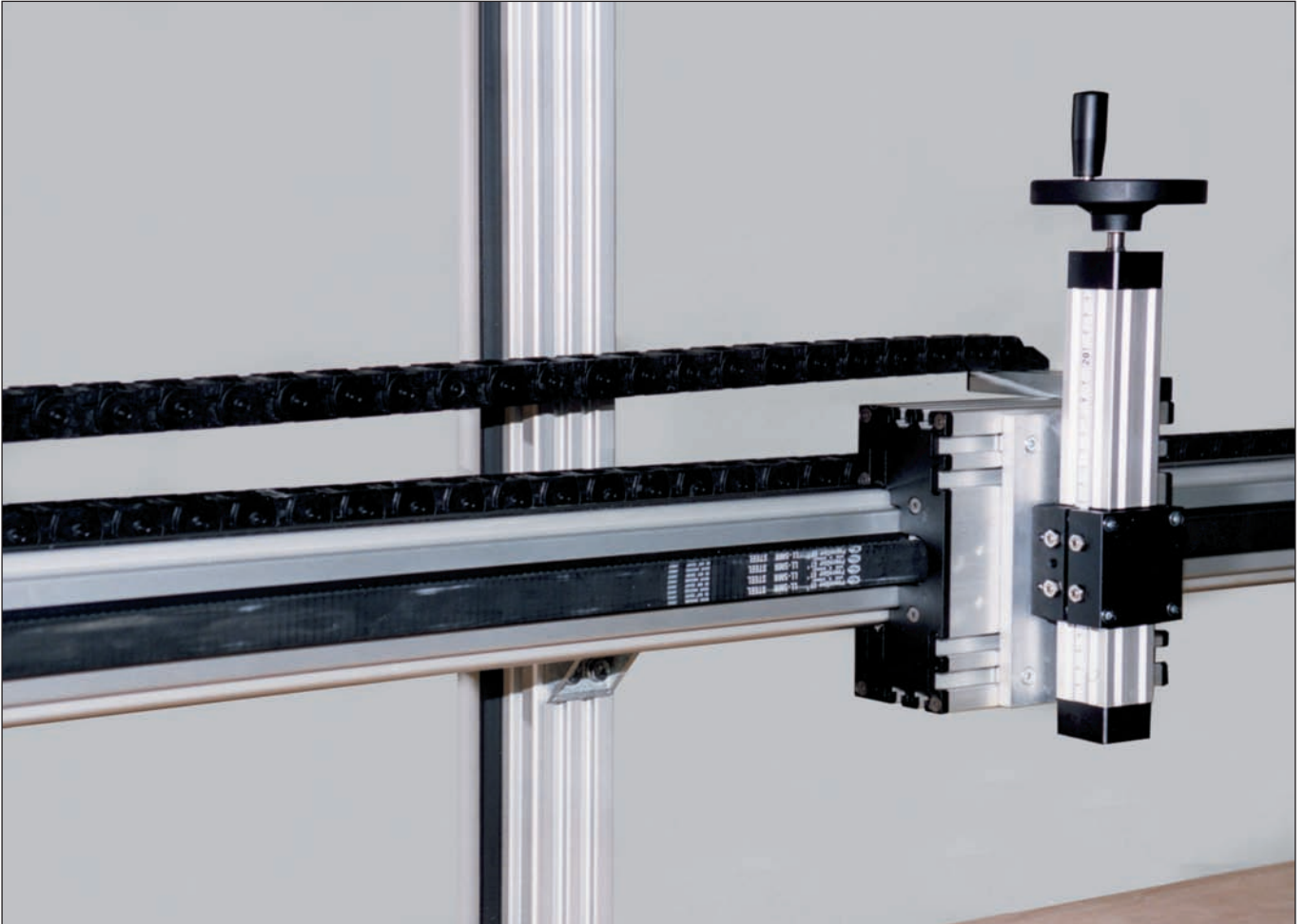
Slot stone -N-

- Slot stone for lateral insertion in the carriage
- For further slot stone versions, please refer to the catalogue "BLOCAN® Profile Technology"

Material: Steel, galvanised



[mm]									
Code No.	Type	Version	A	B	C	D	E	M	F [N]
4006201	PLZ 30	M5	5	10	13	13	3	M5	4000
4006203	PLZ 30	M6	5	10	13	13	3	M6	4000
4006202	PLZ 30	M8	5	10	13	13	3	M8	4000
4026207	PLZ 40-80	M5	8	10	13	15	4	M5	4000
4026203	PLZ 40-80	M6	8	10	13	15	4	M6	9000
4026206	PLZ 40-80	M8	8	10	13	15	4	M8	9000



X-Z combination - PLZ/quad EV

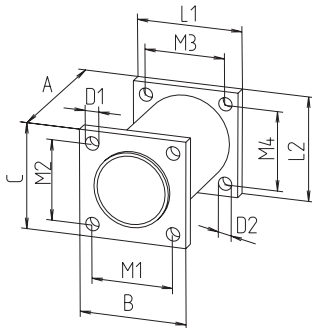
PLZ/PLZ-i – Drive

Connecting adaptor 30-50

- Connecting piece between linear unit and transmission unit

Material: Aluminium, black anodised
Galvanised fastenings

Scope of delivery: Adaptor with fastenings



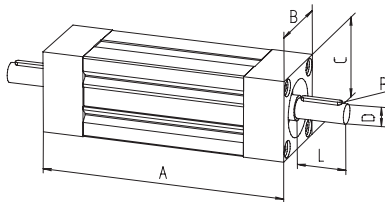
[mm]

Code No.	Type	A	B	C	D1	D2	L1	L2	M1	M2	M3	M4
91305	PLZ 30	62	30	30	4.3	4.3	48	30	21	21	21	21
91306	PLZ 40	68	40	40	5.4	5.4	40	40	29	29	29	29
91307	PLZ 50	75	50	50	6.4	6.4	50	50	38	38	38	38
91316	PLZ-i 40	68	40	40	5.4	5.4	40	40	29	29	29	29

Connecting and transmission unit 30-50

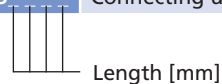
- Transmission of torques or as connecting unit between two parallel linear units

Material: Aluminium, anodised



[mm]

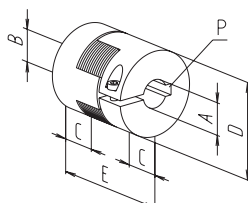
Code No.	Type	A (basic length)	B	C	D	L	P
92503_ _ _ _	Transmission unit 30	60	30	30	8	25	2 x 2 x 20
92513_ _ _ _	Connecting unit 30	60	30	30	-	-	-
92504_ _ _ _	Transmission unit 40	80	40	40	10	28	3 x 3 x 20
92514_ _ _ _	Connecting unit 40	80	40	40	-	-	-
92505_ _ _ _	Transmission unit 50	80	50	50	12	30	4 x 4 x 25
92515_ _ _ _	Connecting unit 50	80	50	50	-	-	-



Coupling for transmission unit 30-50

- Shaft connection without backlash
- Easy plug-in assembly

Material: Hub, aluminium
Gear ring, polyurethane



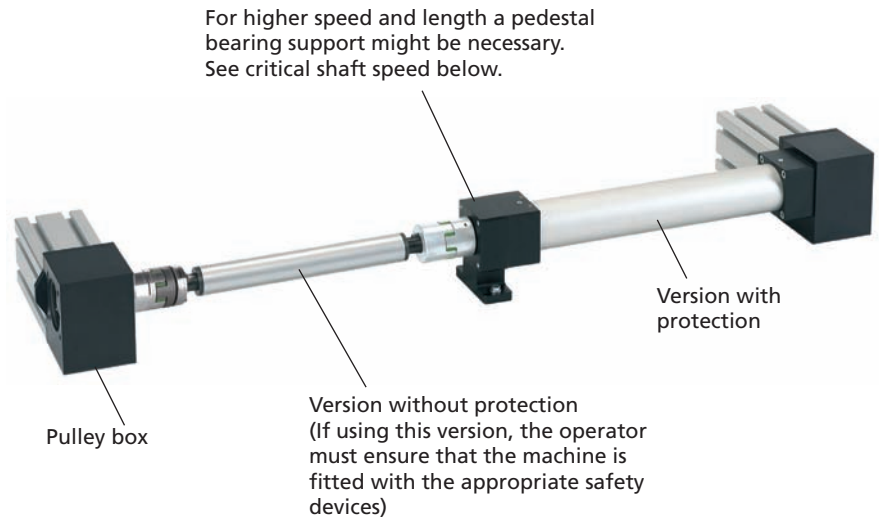
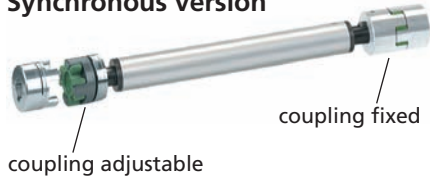
[mm]

Code No.	Type	A	B	C	D	E	P	Torque [Nm]	
								with feather key	without feather key
9109200810	PLZ 30	8	10	10	20	30	2 x 2/3 x 3	5	3
9109201010	PLZ 40	10	10	10	20	30	3 x 3/3 x 3	5	3
9114301214	PLZ 50	12	14	11	30	35	4 x 4/5 x 5	12	6
9109200608	PLZ-i 30	6	8	10	20	30	2 x 2/2 x 2	5	3
9109200810	PLZ-i 40	8	10	10	20	30	2 x 2/3 x 3	5	3
9109201012	PLZ-i 50	10	12	10	20	30	3 x 3/4 x 4	5	3

Transmission unit 60-80

- Transmission of high torques up to 120 Nm on parallel linear units
- Synchronisation of carriages via zero point alignment

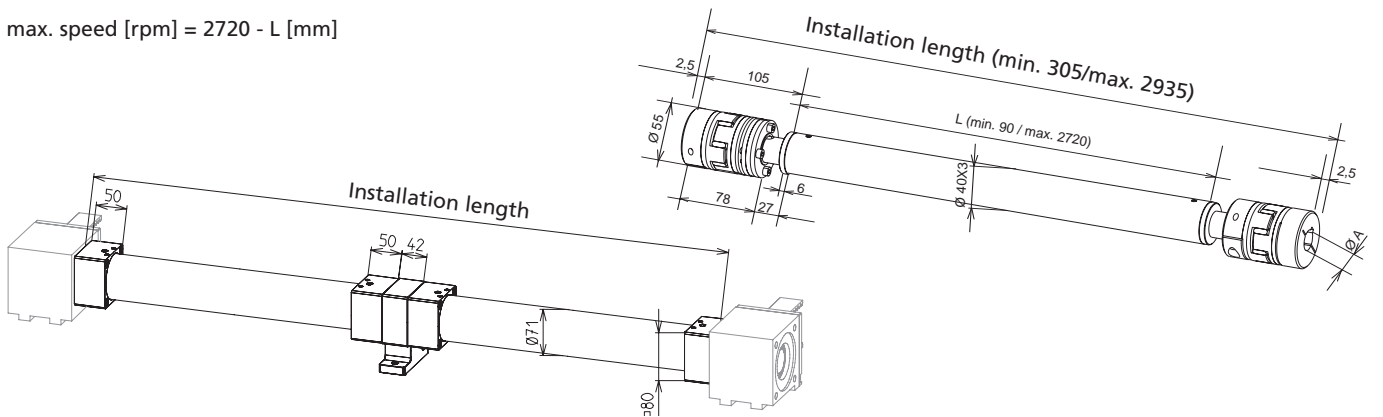
Synchronous version



Critical shaft speed:

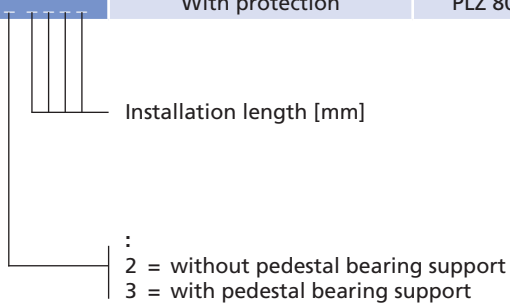
max. unsupported length [mm] = (2720 - speed [rpm]) + 2 x 107.5

max. speed [rpm] = 2720 - L [mm]



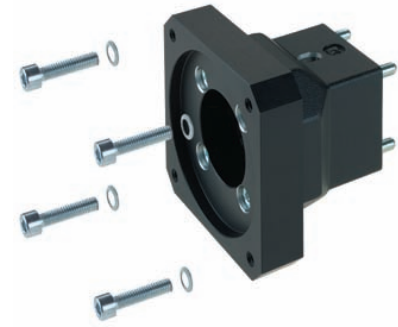
[mm]

Code No.	Version	for linear unit	A [mm]	Weight [g]		
				1000 mm	per 100 mm	Pedestal bearing support
9252036 _ _ _ _	Without protection	PLZ 60	20	5.23	230	1400
9252136 _ _ _ _	With protection	PLZ 60	20	8.56	400	1400
9252038 _ _ _ _	Without protection	PLZ 80	25	5.23	230	1500
9252138	With protection	PLZ 80	25	8.56	400	1500



PLZ/PLZ-i – Drive

Selection table - motor adaptor/coupling



Type	Servomotor									Three-phase motor	
	RK-AC 112	RK-AC 118		RK-AC 240		RK-AC 260	RK-AC 345	RK-AC 210/470		90/120 W	180/250 W
	Gear unit		Gear unit		Gear unit	Gear unit	Gear unit		Gear unit		
PLZ 30	949426	949211	949286	-	-	-	-	-	-	94995	949948
	911430 1014	911430 1011	911430 1016	-	-	-	-	-	-	910920 1012	911430 1014
PLZ 40	949427	949212	949287	949231	949306	949428	-	-	-	94987	94988
	911430 1014	911430 1011	911430 1016	911430 1014	911940 1020	911940 1020	-	-	-	911430 1012	911430 1014
PLZ 50	949429	949213	949288	949232	949307	949430	-	-	-	94905	949527
	911940 1414	911430 1114	911430 1416	911430 1414	911940 1420	911940 1420	-	-	-	911430 1214	911430 1414
PLZ 60	949431	949214	949289	949233	949308	949432	949433	949243	949317	94956	94950
	911940 1420	911940 1120	911940 1620	911940 1420	911940 2020	911940 2020	912855 2025	911940 1920	912855 2025	911940 1220	911940 1420
PLZ 80	949434	-	949417	949234	949309	949435	949436	949244	949318	949329	949114
	912855 1425	-	912855 1625	912855 1425	912855 2025	912855 2025	912855 2525	912855 1925	912855 2525	912855 1225	912855 2025
PLZ-i 30	-	949501	949502	-	-	-	-	-	-	949504	-
	-	911430 0611	911430 0616	-	-	-	-	-	-	910920 0612	-
PLZ-i 40	-	949510	949511	949512	949513	-	-	-	-	949516	949517
	-	911430 0811	911430 0816	911430 0814	911940 0820	-	-	-	-	911430 0812	911430 0814
PLZ-i 50	-	949520	949521	949522	949523	-	-	-	-	949526	949527
	-	911430 1011	911430 1016	911430 1014	911940 1020	-	-	-	-	911940 1012	911430 1014
PLZ-i 60	-	949540	949541	949542	949543	-	-	949544	949545	949547	949548
	-	911430 1112	911430 1216	911940 1214	911940 1220	-	-	911940 1219	912855 1225	911940 1212	911940 1212
PLZ-i 80	-	-	949409	949560	949561	-	-	949562	949563	949566	949567
	-	-	911940 1416	911940 1414	911940 1420	-	-	911940 1419	912855 1425	911940 1214	911940 1414

↓

Code No. Motor adaptor:
949560

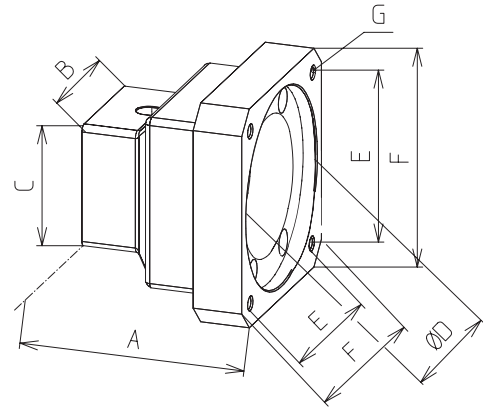
Code No. Coupling with
specification of shaft
diameter
1st end = 14 mm
2nd end = 14 mm:
911940 1414

Note:
For further details on motor versions,
please refer to the chapter "Motors and
controls"

Motor adaptor

- Simple assembly
- Exact fit due to centering shoulders

Material:
Aluminium, black anodised



Code No.	Type	A	B	C	D	E	F	G
949426	PLZ-30	73	40	40	40	53	70	Ø 5.5
949211	PLZ-30	63	40	40	60	53	70	M5
949286	PLZ-30	70	40	40	60	53	70	M5
94995	PLZ-30	65	40	40	50	46	80	M5
949948	PLZ-30	70	40	40	80	100	Ø 120	Ø 6.6
949427	PLZ-40	75	50	50	40	53	70	Ø 5.5
949212	PLZ-40	65	50	50	60	53	70	M5
949287	PLZ-40	73	50	50	60	53	70	M5
949231	PLZ-40	73	50	50	80	70.7	90	M6
949306	PLZ-40	100	50	50	80	70.7	90	M6
949428	PLZ-40	93	50	50	60	70.7	90	Ø 6.6
94987	PLZ-40	73	50	50	50	46	80	M5
94988	PLZ-40	73	50	50	80	100	Ø 120	Ø 6.6
949429	PLZ-50	85	52	52	40	53	70	Ø 5.5
949213	PLZ-50	66	52	52	60	53	70	M5
949288	PLZ-50	75	52	52	60	53	70	M5
949232	PLZ-50	73	52	52	80	70.7	90	M6
949307	PLZ-50	97	52	52	80	70.7	90	M6
949430	PLZ-50	89	52	52	60	70.7	90	Ø 6.6
949257	PLZ-50	73	52	52	73	70	90	M6
94905	PLZ-50	73	52	52	50	65	80	M5
949527	PLZ-50	75	52	52	80	100	Ø 120	Ø 6.6
949431	PLZ-60	84	80	80	40	53	70	Ø 5.5
949214	PLZ-60	74	80	80	60	53	70	M5
949289	PLZ-60	81	80	80	60	53	70	M5
949233	PLZ-60	79	80	80	80	70.7	90	M6
949308	PLZ-60	96	80	80	80	70.7	90	M6
949432	PLZ-60	89	80	80	60	70.7	70	Ø 6.6
949433	PLZ-60	114	80	80	80	91.9	115	Ø 9
949243	PLZ-60	89	80	80	95	81.3	115	M8
949317	PLZ-60	112.5	80	80	110	91.9	115	M8
94956	PLZ-60	79	80	80	50	46	80	M5
94950	PLZ-60	79	80	80	80	100	Ø 120	Ø 6.6
949434	PLZ-80	99	80	80	40	53	70	Ø 5.5
949417	PLZ-80	89	80	80	60	53	70	M5
949234	PLZ-80	86	80	80	80	70.7	90	M6
949309	PLZ-80	102	80	80	80	70.7	90	M6
949435	PLZ-80	96	80	80	60	70.7	70	Ø 6.6
949436	PLZ-80	111	80	80	80	91.9	115	Ø 9
949244	PLZ-80	96	80	80	95	81.3	115	M8
949318	PLZ-80	112.5	80	80	110	91.9	115	M8
949329	PLZ-80	86	80	80	57	46	80	M5
949114	PLZ-80	86	80	80	80	100	Ø 120	Ø 6.6

[mm]

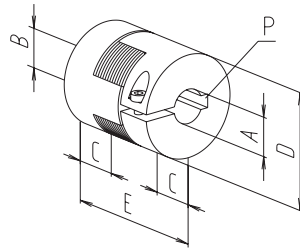
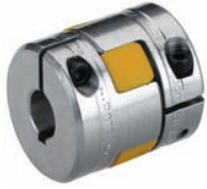
Code No.	Type	A	B	C	D	E	F	G
949501	PLZ-i-30	63	40	40	60	53	70	M5
949502	PLZ-i-30	70	40	40	60	53	70	M5
949504	PLZ-i-30	65	40	40	50	46	80	M5
949510	PLZ-i 40	65	50	50	60	53	70	M5
949511	PLZ-i 40	73	50	50	60	53	70	M5
949512	PLZ-i 40	73	50	50	80	70.7	90	M6
949513	PLZ-i 40	100	50	50	80	70.7	90	M6
949516	PLZ-i 40	73	50	50	50	46	80	M5
949517	PLZ-i 40	73	50	50	80	100	Ø 120	Ø 6.6
949520	PLZ-i 50	66	52	52	60	53	70	M5
949521	PLZ-i 50	75	52	52	60	53	70	M5
949522	PLZ-i 50	73	52	52	80	70.7	90	M6
949523	PLZ-i 50	97	52	52	80	70.7	96	M6
949524	PLZ-i 50	73	52	52	73	70	90	M6
949526	PLZ-i 50	73	52	52	50	65	80	M5
949527	PLZ-i 50	75	52	52	80	100	Ø 120	Ø 6.6
949540	PLZ-i 60	66	60	60	60	53	70	M5
949541	PLZ-i 60	75	60	60	60	53	70	M5
949542	PLZ-i 60	81	60	60	80	70.7	90	M6
949543	PLZ-i 60	97	60	60	80	70.7	90	M6
949544	PLZ-i 60	91	60	60	95	81.3	115	M8
949545	PLZ-i 60	120	60	60	110	91.9	115	M8
949547	PLZ-i 60	75	60	60	50	65	80	M5
949548	PLZ-i 60	75	60	60	80	100	Ø 120	Ø 6.6
949409	PLZ-i 80	86	80	80	60	53	70	M5
949560	PLZ-i 80	86	80	80	80	70.7	90	M6
949561	PLZ-i 80	102	80	80	80	70.7	90	M6
949562	PLZ-i 80	96	80	80	95	81.3	115	M8
949563	PLZ-i 80	112.5	80	80	110	91.9	115	M8
949566	PLZ-i 80	86	80	80	50	46	80	M5
949567	PLZ-i 80	86	80	80	80	100	Ø 120	Ø 6.6

PLZ/PLZ-i – Drive

Coupling

- Shaft connection without backlash
- Easy plug-in assembly

Material: Hub, aluminium
Gear ring, polyurethane



[mm]

Code No.	A	B	C	D	E	P	Torque [Nm]	
							with feather key	without feather key
9109200612	6	12	10	20	30	2 x 2/4 x 4	5	3
9109209510	9.5	10	10	20	30	-3 x 3	5	3
9109201011	10	11	10	22	30	3 x 3/4 x 4	5	3
9109201012	10	12	10	22	30	3 x 3/4 x 4	5	3
9114300611	6	11	11	30	35	2 x 2/4 x 4	12	6
9114300616	6	16	11	30	35	2 x 2/5 x 5	12	6
9114300811	8	11	11	30	35	2 x 2/4 x 4	12	6
9114300814	8	14	11	30	35	2 x 2/5 x 5	12	6
9114300816	8	16	11	30	35	2 x 2/5 x 5	12	6
9114309514	9.5	14	11	30	35	-5 x 5	12	6
9114301011	10	11	11	30	35	3 x 3/4 x 4	12	6
9114301012	10	12	11	30	35	3 x 3/4 x 4	12	6
9114301014	10	14	11	30	35	3 x 3/5 x 5	12	6
9114301016	10	16	11	30	35	3 x 3/5 x 5	12	6
9114301112	11	12	11	30	35	4 x 4/4 x 4	12	6
9114301114	11	14	11	30	35	4 x 4/5 x 5	12	6
9114301214	12	14	11	30	35	4 x 4/5 x 5	12	6
9114301216	12	16	11	30	35	2 x 2/5 x 5	12	6
9114301414	14	14	11	30	35	5 x 5/5 x 5	12	6
9114301416	14	16	11	30	35	5 x 5/5 x 5	12	6

Coupling

[mm]

Code No.	A	B	C	D	E	P	Torque [Nm]	
							with feather key	without feather key
9119400820	8	20	25	40	65	2 x 2/6 x 6	17	10
9119409520	9.5	20	25	40	65	-/6 x 6	17	10
9119401012	10	12	25	40	65	2 x 2/4 x 4	17	10
9119401014	10	14	25	40	65	2 x 2/5 x 5	17	10
9119401020	10	20	25	40	65	2 x 2/6 x 6	17	10
9119401120	11	20	25	40	65	3 x 3/6 x 6	17	10
9119401212	12	12	25	40	65	4 x 4/4 x 4	17	10
9119401214	12	14	25	40	65	4 x 4/5 x 5	17	10
9119401219	12	19	25	40	65	4 x 4/6 x 6	17	10
9119401220	12	20	25	40	65	4 x 4/6 x 6	17	10
9119401414	14	14	25	40	65	5 x 5/5 x 5	17	10
9119401420	14	20	25	40	65	5 x 5/6 x 6	17	10
9119401416	14	16	25	40	65	5 x 5/5 x 5	17	10
9119401419	14	19	25	40	65	5 x 5/6 x 6	17	10
9119401620	16	20	25	40	65	5 x 5/6 x 6	17	10
9119401920	19	20	25	40	65	6 x 6/6 x 6	17	10
9119402020	20	20	25	40	65	6 x 6/6 x 6	17	10
9128551225	12	25	30	55	78	4 x 4/8 x 8	60	35
9128551425	14	25	30	55	78	5 x 5/8 x 8	60	35
9128551625	16	25	30	55	78	5 x 5/8 x 8	60	35
9128551925	19	25	30	55	78	6 x 6/8 x 8	60	35
9128552025	20	25	30	55	78	6 x 6/8 x 8	60	35
9128552525	25	25	30	55	78	8 x 8/8 x 8	60	35

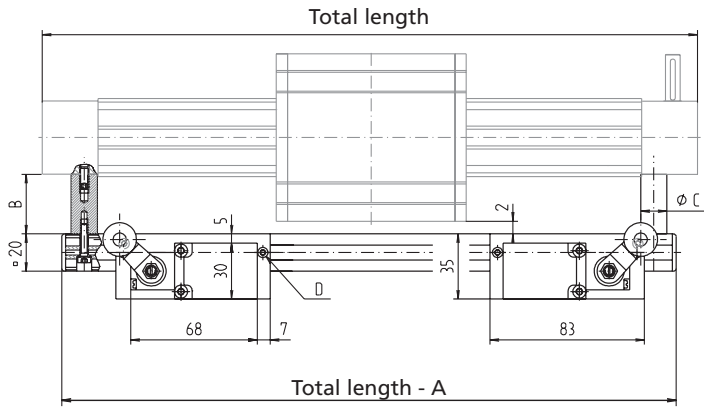
PLZ/PLZ-i – Position determination

Holder for mechanical limit switch

- Limit switch can be moved and fixed axially
- Guide rail made of profile F-20 x 20
- Connecting cables can be laid in the profile slots

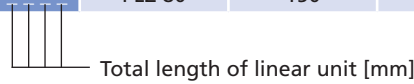
Material: Aluminium, anodised
Galvanised fastenings
Scope of delivery: Guide rail, spacer, 2 fixing plates, caps and fastenings

Note: The Code No. does not include the limit switch.
For limit switch, please see page 414.



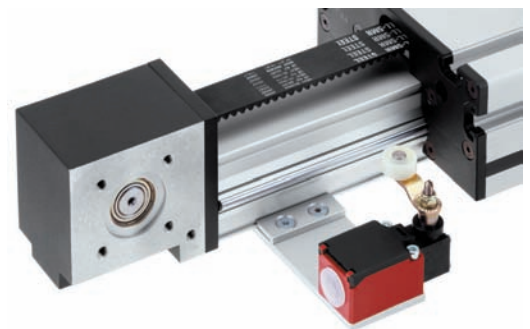
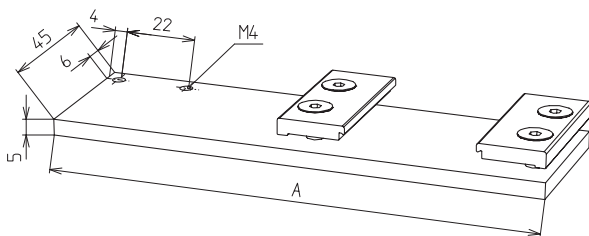
[mm]

Code No.	Type	A	B	C	D
92775 _ _ _ _	PLZ 30	66	28	14	M3 x 10
92776 _ _ _ _	PLZ 40	80	38	16	M3 x 10
92777 _ _ _ _	PLZ 50	112	48	16	M3 x 10
92778 _ _ _ _	PLZ 60	140	52	16	M3 x 10
92779 _ _ _ _	PLZ 80	150	52	16	M3 x 10



- Fixing to guide profile using fixing plates
- Simple axial displacement and adjustment of holder is possible

Material: Aluminium, clear anodised
Galvanised fastenings



[mm]

Code No.	Type	Version	A
92784	PLZ 30	Holder with fastenings without limit switch	110
92785	PLZ 40		130
92786	PLZ 50		150
92787	PLZ 60		177
92788	PLZ 80		197
91905	all	Limit switches NC/NO contacts*	-

*For technical data for the limit switch, please refer to page 414



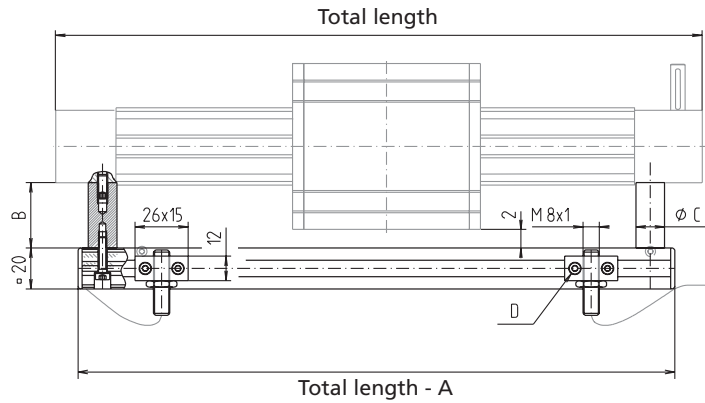
PLZ/PLZ-i - Position determination

Holder for inductive limit switch

- Limit switch can be moved and fixed axially
- Guide rail made of profile F-20 x 20
- Connecting cables can be laid in the profile slots

Material: Aluminium, anodised
Galvanised fastenings
Scope of delivery: Guide rail, spacer, 2 fixing plates, caps and fastenings

Note: The Code No. does not include the limit switch.
 For limit switch, please see page 414.



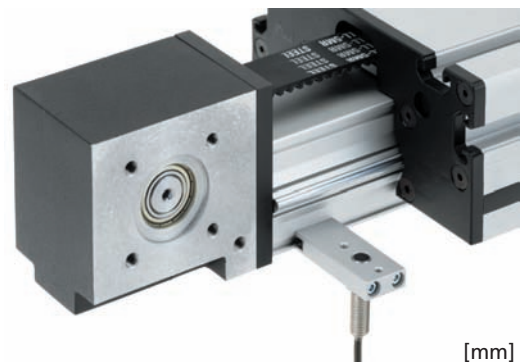
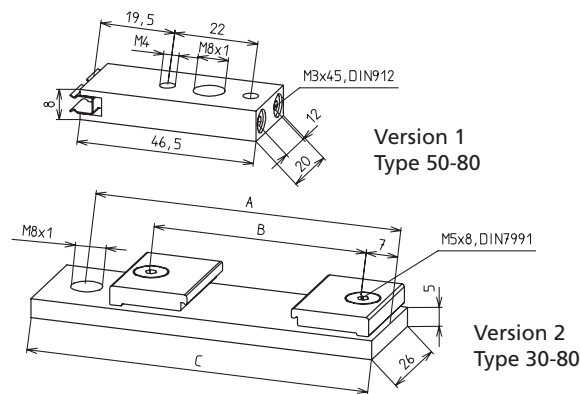
[mm]

Code No.	Type	A	B	C	D
92975 _ _ _ _	PLZ 30	66	28	14	M3 x 16
92976 _ _ _ _	PLZ 40	80	38	16	M3 x 16
92977 _ _ _ _	PLZ 50	112	48	16	M3 x 16
92978 _ _ _ _	PLZ 60	140	52	16	M3 x 16
92979 _ _ _ _	PLZ 80	150	52	16	M3 x 16

Total length of linear unit [mm]

- Clamping on guide profile
- Simple axial displacement and adjustment of holder is possible

Material: Aluminium, clear anodised,
Galvanised fastenings
Scope of delivery: Holder with fastenings **without** limit switch



[mm]

Code No.	Type	Version	A	B	C
92990	PLZ 30	2	64.5	46	74
92991	PLZ 40	2	80	56	90
92992	PLZ 50	2	96	66	106
92993	PLZ 60	2	80	80	123.5
92994	PLZ 80	2	133.5	100	143.5
92986	PLZ 50-80	1	-	-	-

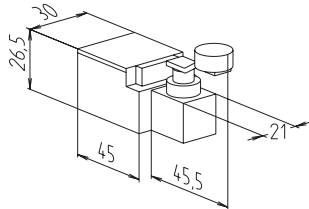
For limit switch, please see page 414.

PLZ/PLZ-i – Position determination

Mechanical limit switch

- Limit switch with angle lever
- Compact design

Material: Thermoplastic, fully insulated



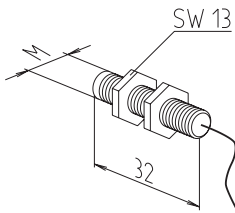
Max. voltage	250 V AC
Max. switching current	6 A
Max. starting current	16 A
Operating cycles	Max. 6,000/h
Mechanical lifetime	1 x 10 ⁷ switching cycles
Axis lever adjustment	locking by 360°
Protection class	IP 65
Ambient temperature	-30°C to +80°C

Code No.	Type	Switching function
91905	PLZ 30-80	NC/NO
92767	Fixing plate (same version as for limit switch holder on page 412, with fastenings)	

Inductive limit switch

- Function indicator (LED)
- Maintenance-free

Material: Housing: stainless steel



Voltage	10-30 V DC
Max. switching current	200 mA
Max. starting current	200 mA
Operating frequency	700 Hz acc. to DIN EN 50010
Mechanical lifetime	independent of operating cycles
Operating distance	1.5 mm for steel/0.75 mm for aluminium
Protection class	IP 65
Ambient temperature	-25°C - +70°C

Code No.	Type	Switching function	M
92816	PLZ 30-80	Normally closed contact	M8 x 1
92817	PLZ 30-80	Normally open contact	M8 x 1
92967	Fixing element (same version as for limit switch holder on page 413, with fastenings)		

