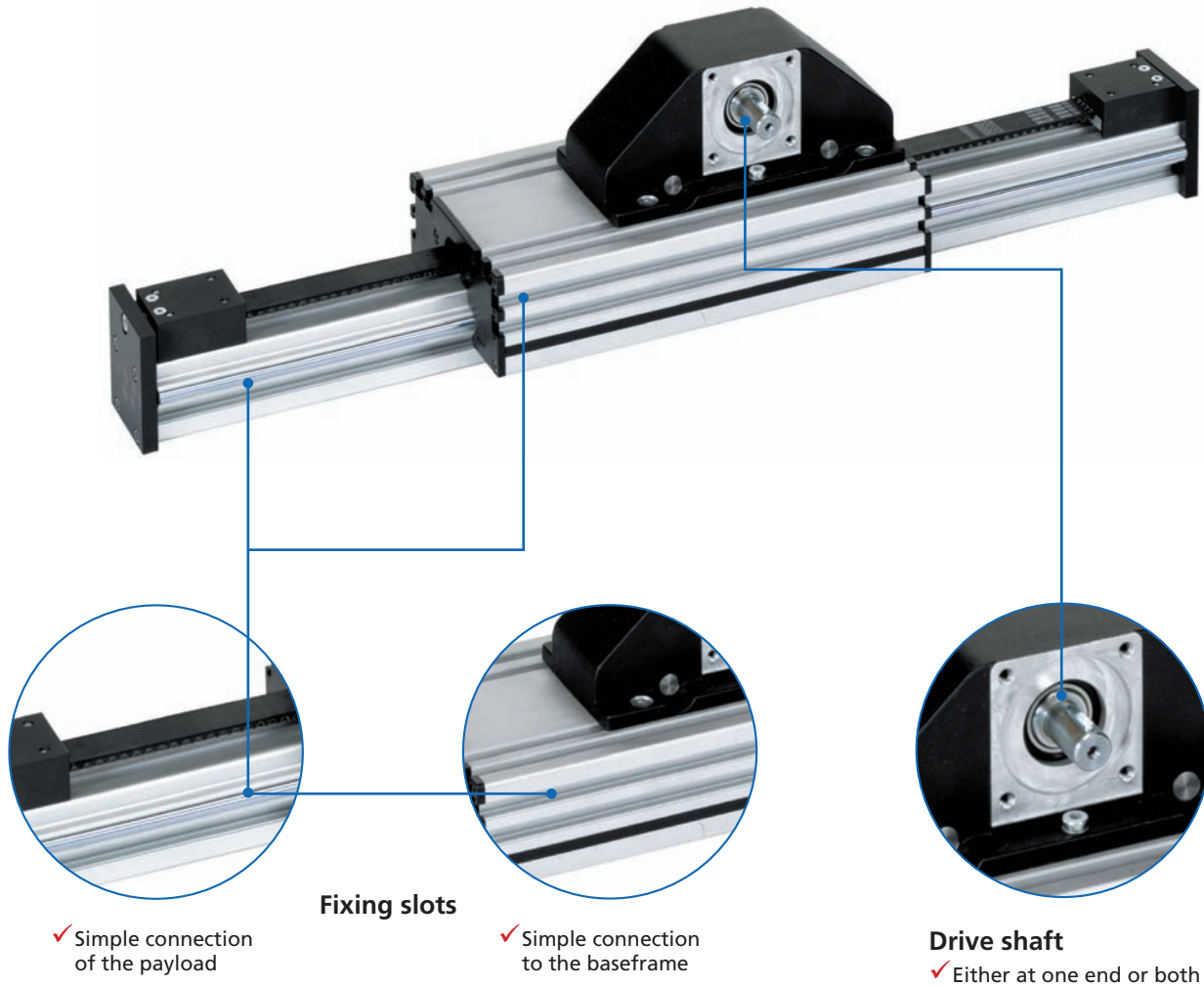


Roller guide actuators - SQ MT

Timing-belt unit with fixed carriage, also for large travel



Features:

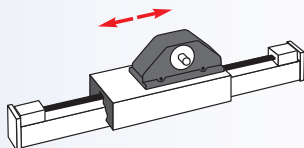
- Stroke lengths up to 18 m
- Travel speed up to 5 m/s
- Guide profile made from the BLOCAN® modular profile system

- Extruded carriage with fixing slots
- Guide block and drive move with carriage

Options:

- Longer stroke lengths
- Second carriage, either non driven or driven separately
- Extended carriage

Table of contents - SQ MT

Properties/Technical data		<ul style="list-style-type: none"> ■ General information/operating conditions ... 492 ■ Timing-belt 492 ■ Load data..... 493
Versions (Dimensions, order numbers)		<ul style="list-style-type: none"> ■ SQ MT timing-belt unit..... 494 - 495
Accessories	Fixing	<ul style="list-style-type: none"> ■ Slot stones 496
	Drive	<ul style="list-style-type: none"> ■ Coupling 499 ■ Motor adaptor 498
	Position determination	<ul style="list-style-type: none"> ■ Mechanical limit switch 500 ■ Inductive limit switch and holder 501

SQ MT – Technical data

General information/operating conditions

Design	Aluminium profile, timing-belt drive, moving profile
Guide	Rollers, external
Installation position	Any position
Repeatability	± 0.05 mm
Ambient temperature	0°C to +60°C
Protection class	IP 20

Timing-belt

Type	Timing-belt	Pitch/width	Eff. diam. of lock washer [mm]	Max. moment via shaft [Nm]	Max. speed [m/s]	Max. acceleration [m/s ²]
SQ MT 30	GT 5MR	5/12	23.87	5	5	20
SQ MT 40	GT 5MR	5/20	27.06	8.5	5	
SQ MT 40 x 80	GT 5MR	5/20	27.06	8.5	5	
SQ MT 50	GT 5MR	5/25	38.20	20	5	
SQ MT 50 x 100	GT 5MR	5/25	38.20	20	5	
SQ MT 60	GT 8MR	8/28	56.02	55	10	
SQ MT 60 x 120	GT 8MR	8/28	56.02	55	10	
SQ MT 80	GT 8MR	8/40	61.12	90	10	
SQ MT 80 x 160	GT 8MR	8/40	61.12	90	10	

No-load torque

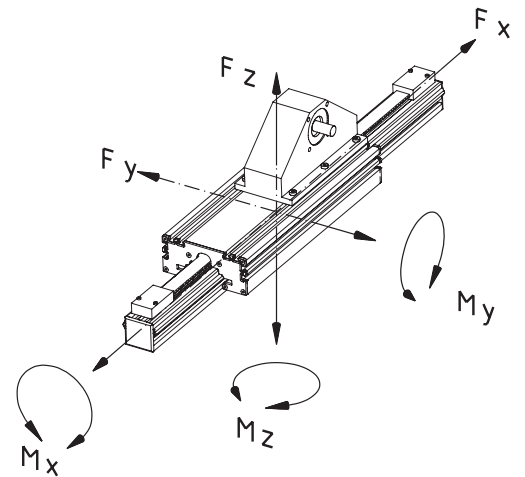
[Nm]

Type	SQ MT
30	0.60
40	0.70
50	0.85
60	1.00
80	1.20

SQ MT - Technical data
Load data*

- F Force [N]
- M Moment [Nm]
- I Geometric moment of inertia [cm⁴]

* With reference to carriage (static values, guide element resting on full surface)

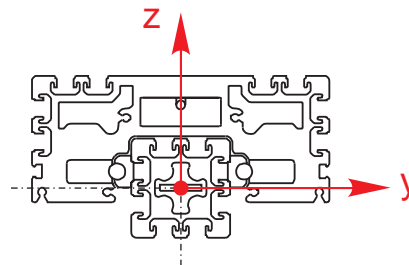


Type	F_x	F_y	F_z	M_x	M_y	M_z
SQ MT 30	320	790	790	14	24	26
SQ MT 40	610	1020	1020	23	40	40
SQ MT 40 x 80	610	1020	1020	23	40	40
SQ MT 50	1000	1020	1020	28	59	59
SQ MT 50 x 100	1000	1020	1020	28	59	59
SQ MT 60	1790	2550	2550	99	171	171
SQ MT 60 x 120	1790	2550	2550	99	171	171
SQ MT 80	2810	2550	2550	124	201	201
SQ MT 80 x 160	2810	2550	2550	124	201	201

Geometric moment of inertia

 [cm⁴]

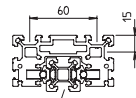
Type	I_y	I_z
SQ MT 30	3.4	3.4
SQ MT 40	11.3	11.3
SQ MT 40 x 80	19.4	76.0
SQ MT 50	29.1	29.1
SQ MT 50 x 100	43.9	180.8
SQ MT 60	51.2	51.2
SQ MT 60 x 120	94.7	372.3
SQ MT 80	155.3	155.3
SQ MT 80 x 160	292.4	1090



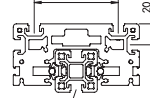
SQ MT - Versions

Order information:

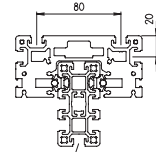
- Longer travel lengths on request
- Second non driven or separately driven carriage available on request
- Extended carriage available on request



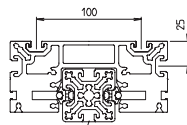
Profile S-30



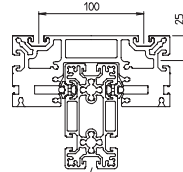
Profile S-40



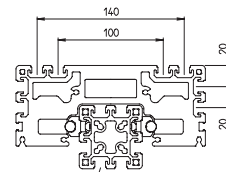
Profile S-40 x 80



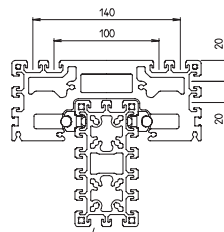
Profile F-50



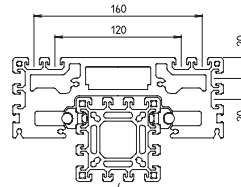
Profile F-50 x 100



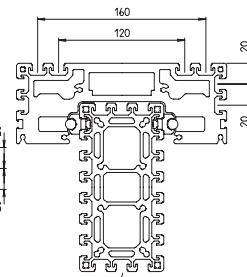
Profile F-60



Profile F-60 x 120



Profile F-80

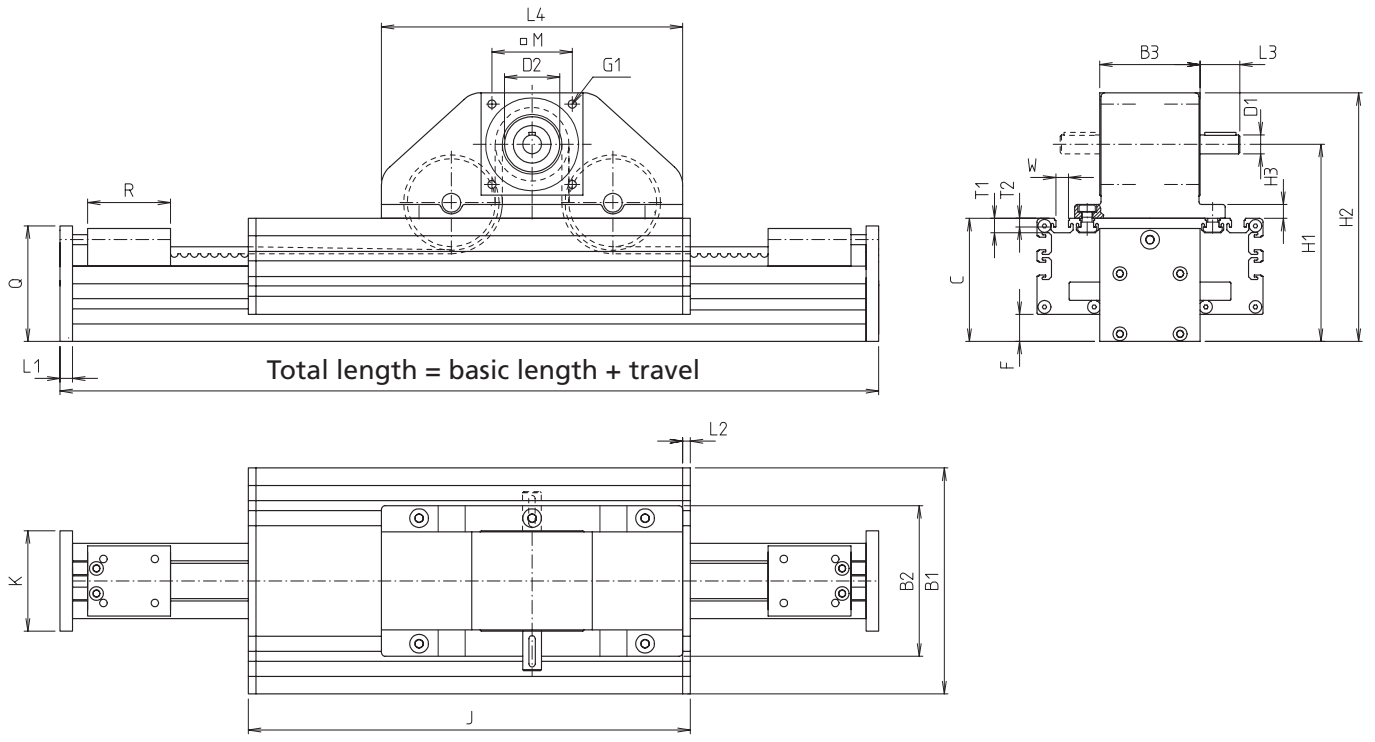


Profile F-80 x 160



Code No.	Type	Timing-belt	Basic length	B1	B2	B3	C	D1	D2	F	G1	H1	H2
FEB3030 _ A	SQ MT 30	5M-12	278	91.2	75	38	50	10	22 ^{H7}	4.5	M4	83	107
FEB4040 _ A	SQ MT 40	5M-20	352	120	100	48	65	10	28 ^{H7}	6.5	M5	104	132
FEB4080 _ A	SQ MT 40 x 80	5M-20	352	120	100	48	105	10	28 ^{H7}	46.5	M5	144	172
FEB5050 _ A	SQ MT 50	5M-25	377	150	120	58	78	14	35 ^{H7}	9	M6	119	155
FEB5010 _ A	SQ MT 50 x 100	5M-25	377	150	120	58	128	14	35 ^{H7}	59	M6	169	205
FFB6060 _ A	SQ MT 60	8M-28	524	180	120	80	98	20	70 ^{H7}	21.5	M8	157	198
FFB6012 _ A	SQ MT 60 x 120	8M-28	524	180	120	80	158	20	70 ^{H7}	81.5	M8	217	258
FFB8080 _ A	SQ MT 80	8M-40	554	200	140	100	118	25	70 ^{H7}	41.5	M8	177	218
FFB8016 _ A	SQ MT 80 x 160	8M-40	554	200	140	100	198	25	70 ^{H7}	121.5	M8	257	298

Drive shafts:
A = 1 shaft
B = 2 shafts



[mm]

H3	J	O	L1	L2	C	L4	M	Q	R	T1	T2	W	Max. travel	Mass [kg]	
														Basic length	per 100 mm travel
7	181	40	8	6	25	120	21	47	35	8.5	4.5	10.1	3722	2.04	0.14
8	232	47	10	6	28	150	29	60	45	11.5	7	10.1	4648	4.51	0.23
8	232	47	10	6	28	150	29	100	45	11.5	7	10.1	4648	5.06	0.39
8.5	257	60	10	6	30	160	38	73	45	11.5	7	10.1	5623	6.75	0.41
8.5	257	60	10	6	30	160	38	123	45	11.5	7	10.1	5623	7.15	0.52
11	352	80	12	6	31.5	240	64	90	66	11.5	7	10.1	17476	13.63	0.45
11	352	80	12	6	31.5	240	64	150	66	11.5	7	10.1	17476	15.93	0.90
11	382	100	12	6	31.5	240	64	115	66	11.5	7	10.1	17446	17.50	0.79
11	382	100	12	6	31.5	240	64	195	66	11.5	7	10.1	17446	20.41	1.34

SQ MT – Fixing

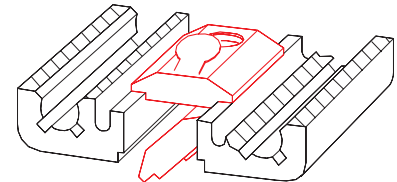
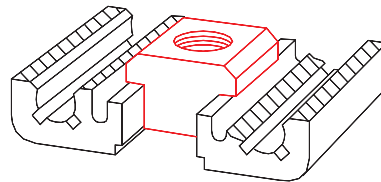
Slot stones

- Slot stones can be inserted and positioned at the guide profile and carriage

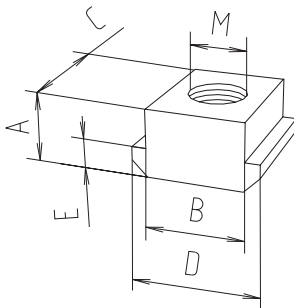
Material: galvanised steel

Slot stone -N-
can be slid into the slot

Slot stone -K-
can be swivelled into the slot

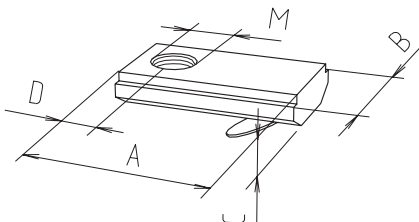


Slot stone -N-

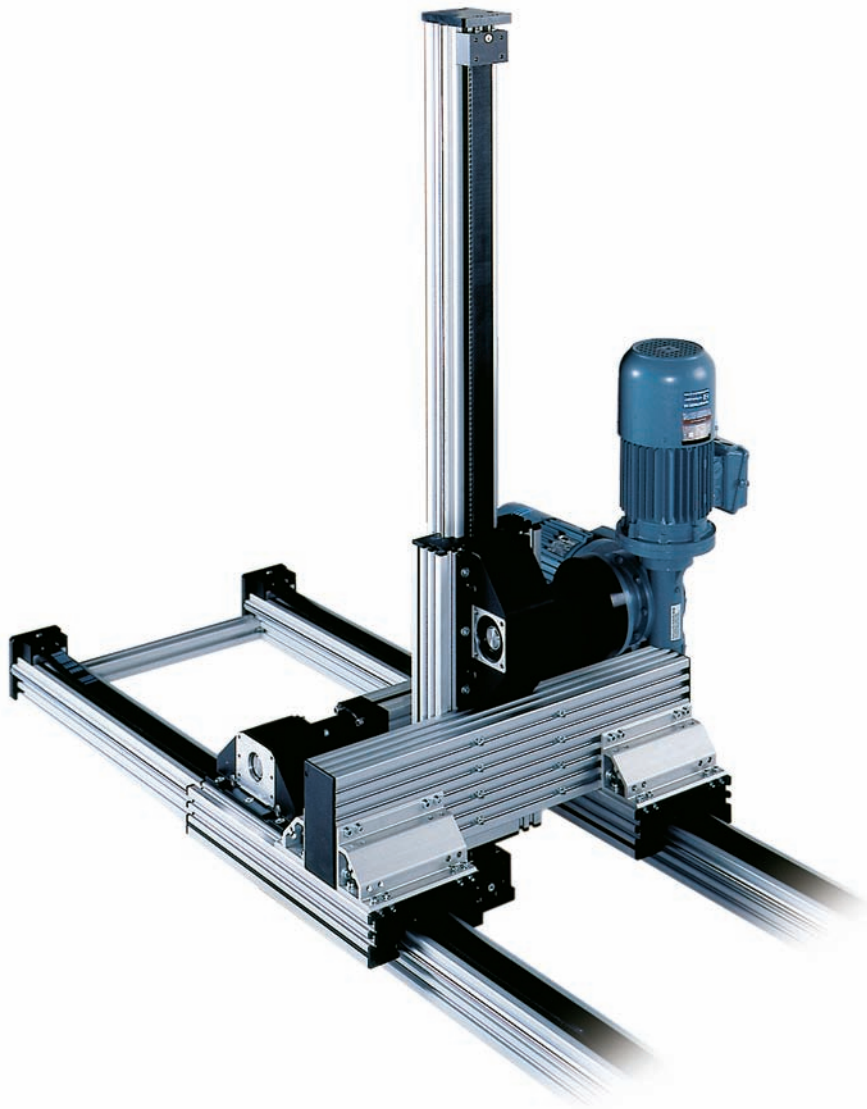


[mm] 

Slot stone -K-



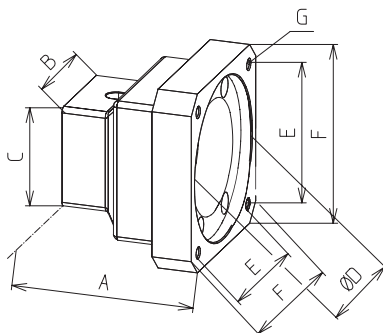
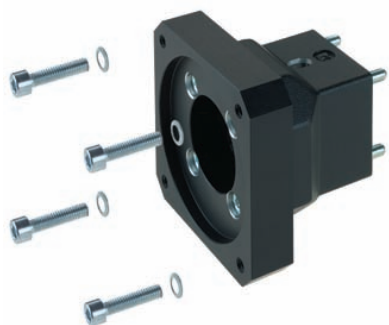
Code No.	Type	Version	A	B	C	D	E	M	F [N]
Slot stone -N-									
4006201	SQ MT 30	M5	5	10	13	13	3	M5	4000
4006203	SQ MT 30	M6	5	10	13	13	3	M6	4000
4006202	SQ MT 30	M8	5	10	13	13	3	M8	4000
4026207	SQ MT 40-80	M5	8	10	13	15	4	M5	4000
4026203	SQ MT 40-80	M6	8	10	13	15	4	M6	9000
4026206	SQ MT 40-80	M8	8	10	13	15	4	M8	9000
Slot stone -K-									
4006211	all	M5	21	12	4	7	-	M5	5000
4006212	all	M6	21	12	4	7	-	M6	5000
4006213	all	M8	21	12	4	7	-	M8	5000
4016212	SQ MT 40-80	M6	21	14	4	7	-	M6	5000
4016213	SQ MT 40-80	M8	21	14	4	7	-	M8	8000



Motor adaptor

- Simple assembly
- Exact fit due to centring shoulders

Material: AlMgSi, black anodised



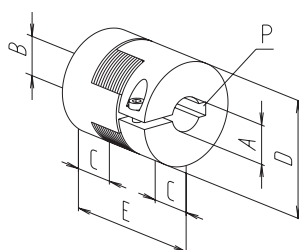
[mm]

Code No.	Type	A	B	C	D	E	F	G
949910	30	63	40	40	60	53	70	M5
949911	30	70	40	40	60	53	70	M5
949913	30	65	40	40	50	65	80	M5
949949	30	70	40	40	80	100	Ø 120	Ø 6.6
949915	40	65	50	50	60	53	70	M5
949916	40	73	50	50	60	53	70	M5
949917	40	73	50	50	80	70.7	90	M6
949918	40	100	50	50	80	70.7	90	M6
949920	40	73	50	50	50	65	80	M5
949921	40	73	50	50	80	100	Ø 120	Ø 6.6
949922	50	66	52	52	60	53	70	M5
949923	50	75	52	52	60	53	70	M5
949924	50	73	52	52	80	70.7	90	M6
949925	50	97	52	52	80	70.7	90	M6
949928	50	73	52	52	50	65	80	M5
949929	50	75	52	52	80	100	Ø 120	Ø 6.6
949930	60	74	80	80	60	53	70	M5
949931	60	81	80	80	60	53	70	M5
949932	60	79	80	80	80	70.7	90	M6
949933	60	96	80	80	80	70.7	90	M6
949934	60	89	80	80	95	81.3	115	M8
949935	60	112.5	80	80	110	91.9	115	M8
949938	60	79	80	80	50	65	80	M5
949939	60	81	80	80	80	100	Ø 120	Ø 6.6
949408	80	89	80	80	60	53	70	M5
949940	80	86	80	80	80	70.7	90	M6
949941	80	102	80	80	80	70.7	90	M6
949942	80	96	80	80	95	81.3	115	M8
949943	80	112.5	80	80	110	91.9	115	M8
949944	80	86	80	80	50	65	80	M5
949945	80	86	80	80	80	100	Ø 120	Ø 6.6

Coupling

- Shaft connection without backlash
 - Easy plug-in assembly
- Material:** Hub, aluminium
Gear ring, polyurethane

[mm]



Code No.	A	B	C	D	E	P	Torque [Nm]	
							with feather key	without feather key
9109209510	9.5	10	10	20	30	-/3 x 3	5	3
9109201012	10	12	10	22	30	3 x 3/4 x 4	5	3
9114309514	9.5	14	11	30	35	-/5 x 5	12	6
9114301011	10	11	11	30	35	3 x 3/4 x 4	12	6
9114301012	10	12	11	30	35	3 x 3/4 x 4	12	6
9114301014	10	14	11	30	35	3 x 3/5 x 5	12	6
9114301016	10	16	11	30	35	3 x 3/5 x 5	12	6
9114301114	11	14	11	30	35	4 x 4/5 x 5	12	6
9114301214	12	14	11	30	35	4 x 4/5 x 5	12	6
9114301414	14	14	11	30	35	5 x 5/5 x 5	12	6
9114301416	14	16	11	30	35	5 x 5/5 x 5	12	6
9114301420	14	20	11	30	35	5 x 5/6 x 6	12	6
9119409520	9.5	20	25	40	65	-/6 x 6	17	10
9119401120	11	20	25	40	65	4 x 4/6 x 6	17	10
9119401220	12	20	25	40	65	4 x 4/6 x 6	17	10
9119401420	14	20	25	40	65	5 x 5/6 x 6	17	10
9119401620	16	20	25	40	65	5 x 5/6 x 6	17	10
9119401920	19	20	25	40	65	6 x 6/6 x 6	17	10
9119402020	20	20	25	40	65	6 x 6/6 x 6	17	10
9128559525	9.5	25	25	40	65	-/8 x 7	17	10
9128551225	12	25	25	40	65	4 x 4/8 x 7	17	10
9128551425	14	25	30	55	78	5 x 5/8 x 7	60	35
9128551625	16	25	30	55	78	5 x 5/8 x 7	60	35
9128551925	19	25	30	55	78	6 x 6/8 x 7	60	35
9128552025	20	25	30	55	78	6 x 6/8 x 7	60	35
9128552525	25	25	30	55	78	6 x 6/8 x 8	60	35

Selection table - motor adaptor/coupling

Type	RK-AC 118		Servomotor RK-AC 240		RK-AC 210/470		Three-phase motor	
		with gear unit		with gear unit		with gear unit	90/120 W	180/250 W
30	949910	949911	-	-	-	-	949913	949949
	911430 1011	911430 1016	-	-	-	-	910920 1012	911430 1014
40 40 x 80	949915	949916	949917	949918	-	-	949920	949921
	911430 1011	911430 1016	911430 1014	911940 1020	-	-	911430 1012	911430 1014
50 50 x 100	949922	949923	949924	949925	-	-	949928	949929
	911430 1114	911430 1416	911430 1414	911940 1420	-	-	911430 1214	911430 1414
60 60 x 120	949930	949931	949932	949933	949934	949935	949938	949939
	911940 1120	911940 1620	911940 1420	911940 2020	911940 1920	912855 2025	911940 1220	911940 1420
80 80 x 160	-	949408	949940	949941	949942	949943	949944	949945
	-	912855 1625	912855 1425	912855 2025	912855 1925	912855 2525	912855 1225	912855 2025

Code No. Motor adaptor:
949408

Code No. Coupling with specification of shaft diameter
1st end = 14 mm
2nd end = 25 mm:
912855 16 25

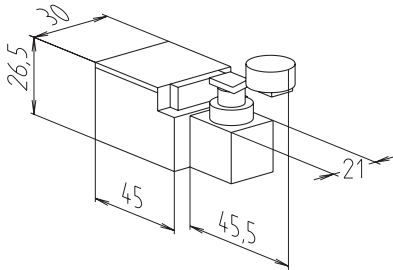
Note:
For further details on motor versions, please refer to the chapter "Motors and controls"

SQ MT – Position determination

Mechanical limit switch

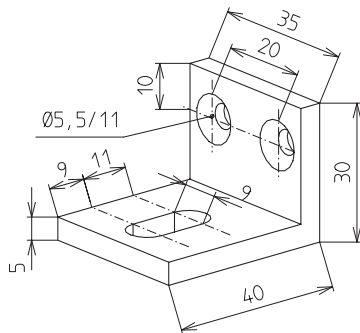
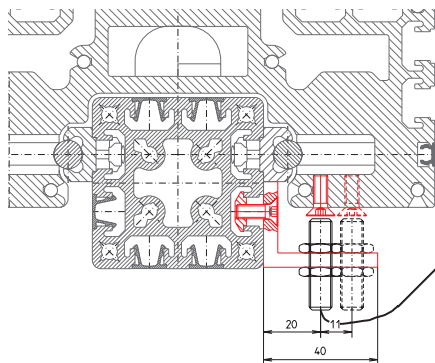
- Limit switch with angle lever
- Compact design

Material:
Thermoplastic, fully insulated



Max. voltage	250 V AC
Max. switching current	6 A
Max. starting current	16 A
Operating cycles	Max. 6,000/h
Mechanical lifetime	1 x 10 ⁷ switching cycles
Axis lever adjustment	locking by 360°
Protection class	IP 65
Ambient temperature	-30°C to +80°C

Code No.	Switching function
91905	NC/NO

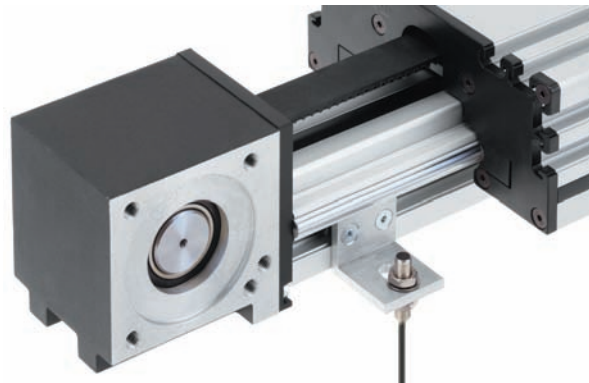
SQ MT - Position determination
Holder for inductive limit switch


- Fixing bracket for limit switches
- Fixing in the profile slot of the guide profile
- Simple axial displacement and adjustment of holder is possible

Material:
AlMgSi, vibratory finished

Scope of delivery:
Holder with fastenings

A limit switch is not included!

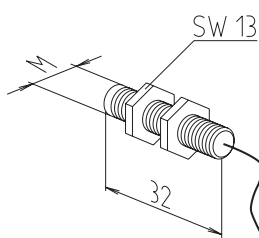


Code No.	Type
92909	SQ MT 40 x 80, 60, 60 x 120, 80, 80 x 160

Inductive limit switch

- Function indicator (LED)
- Maintenance-free

Material: Housing: stainless steel



Voltage	10-30 V DC
Max. switching current	200 mA
Max. starting current	200 mA
Operating frequency	700 Hz acc. to DIN EN 50010
Mechanical lifetime	independent of operating cycles
Operating distance	1.5 mm for steel/0.75 mm for aluminium
Protection class	IP 65
Ambient temperature	-25°C to +70°C

Code No.	Switching function	M
92816	Normally closed contact	M8 x 1
92817	Normally open contact	M8 x 1