

.375 x .125
DIAMETER LEAD

BALL SCREWS

R10/R15



Standard Ball Screw

Ball Screw Part # RH	R-10-1	R-15-1*
Ball Nut Part # RH	R-10-2	R-15-2*
Dynamic Load (lbs) for 1,000,000 (in)	150	25
Max. Static Load (lbs)	1,300	230
Ballnut Weight (lbs)	0.08	0.08
Ballscrew Weight (lbs/ft)	0.31	0.31

*Stainless Steel

Preloaded Ball Screw

Preload Screw Part # RH	RP-10-1	RP-15-1*
Preload Ballnut Part # RH	RP-10-2	RP-15-2*
Dynamic Load (lbs)** for 1,000,000 (in)	135	23
Max. Static Load (lbs)**	1,285	228
Recommended Preload	15	3
Maximum Preload	45	8
Ballnut Weight (lbs)	0.16	0.16

**Based on recommended Preload.

Accessories

Mounting Flange Part #	R-10-3	R-15-3
Wiper Kit Part #	R-10-4	R-15-4

Technical Info:

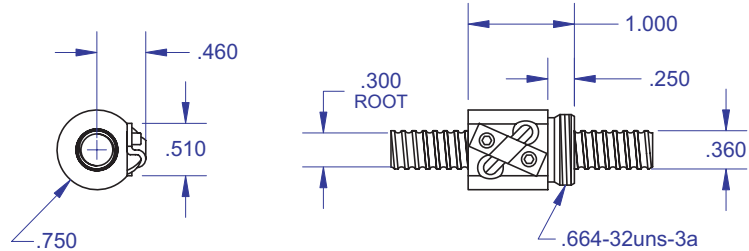
Bearing Mounts and Machined Ends page 80-85
 Lubrication information page 15
 On-line Resources page 3
 (configurable CAD drawings and more)

WANT MORE PRODUCTS?

R/B/S Visit our web site at www.rockfordballscrew.com.

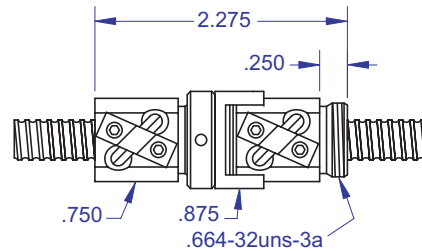
The specifications and data in this publication are deemed to be accurate and reliable and are subject to change without notice.

Standard Ball Screw

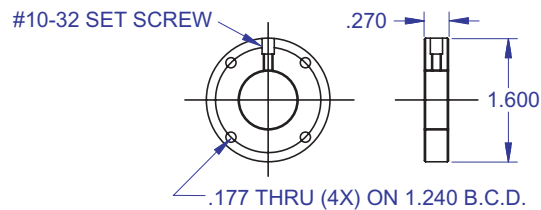


Ball bearing nominal diameter 1/16". Average ball quantity per nut is 62.

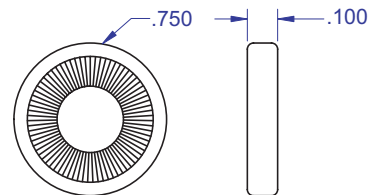
Preloaded Ball Screw



Mounting Flange

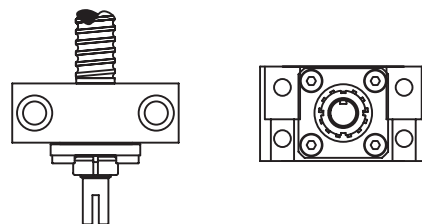


(2 brush wipers) Wiper Kit



Bearing Mount

PLEASE NOTE
 Technical drawings and information can vary depending on which Bearing Mount is desired. See pages 80-85 for details.

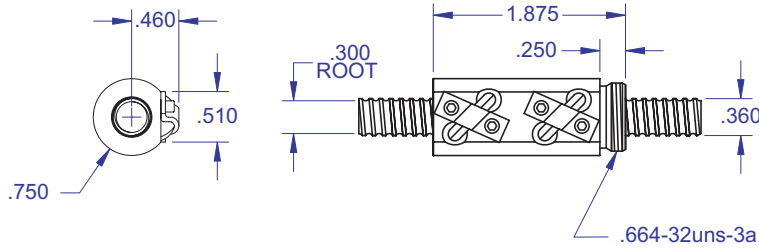


BALL SCREWS

R11/R16

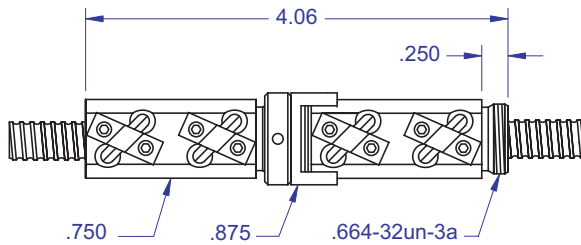


Standard Ball Screw

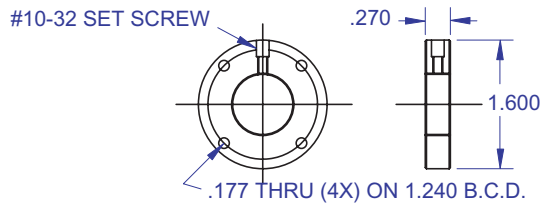


Ball bearing nominal diameter 1/16". Average ball quantity per nut is 124.

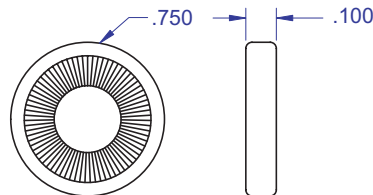
Preloaded Ball Screw



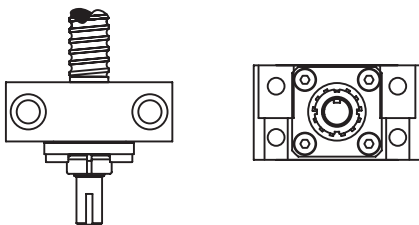
Mounting Flange



Wiper Kit



Bearing Mount



PLEASE NOTE

Technical drawings and information can vary depending on which Bearing Mount is desired. See pages 80-85 for details.

.375 x .125

DIAMETER

LEAD

Standard Ball Screw

Ball Screw Part # RH	R-11-1	R-16-1*
Ball Nut Part # RH	R-11-2	R-16-2*
Dynamic Load (lbs) for 1,000,000 (in)	300	50
Max. Static Load (lbs)	2,600	460
Ballnut Weight (lbs)	0.15	0.15
Ballscrew Weight (lbs/ft)	0.31	0.31

*Stainless Steel

Preloaded Ball Screw

Preload Screw Part #	RP-11-1	RP-16-1*
Preload Ballnut Part #	RP-11-2	RP-16-2*
Dynamic Load (lbs)** for 1,000,000 (in)	270	45
Max. Static Load (lbs)**	2,570	455
Recommended Preload	30	5
Maximum Preload	90	15
Ballnut Weight (lbs)	0.30	0.30

**Based on recommended Preload.

Accessories

Mounting Flange Part #	R-11-3	R-16-3*
Wiper Kit Part #	R-11-4	R-16-4

Technical Info:

Bearing Mounts and Machined Ends	page 80-85
Lubrication information	page 15
On-line Resources (configurable CAD drawings and more)	page 3

WANT MORE PRODUCTS?

Visit our web site at **R/B/S**
www.rockfordballscrew.com. ●/●/●

The specifications and data in this publication are deemed to be accurate and reliable and are subject to change without notice.

.500 x .500
DIAMETER LEAD

BALL SCREWS

R20/R21



Standard Ball Screw

Ball Screw Part # RH	R-20-1	R-21-1*
Ball Nut Part # RH	R-20-2	R-21-2*
Dynamic Load (lbs) for 1,000,000 (in)	850	140
Max. Static Load (lbs)	4,150	750
Ballnut Weight (lbs)	0.25	0.25
Ballscrew Weight (lbs/ft)	0.58	0.58

*Stainless Steel

Preloaded Ball Screw

Preload Screw Part #	RP-20-1	RP-21-1*
Preload Ballnut Part #	RP-20-2	RP-21-2*
Dynamic Load (lbs)** for 1,000,000 (in)	765	126
Max. Static Load (lbs)**	4,065	736
Recommended Preload	85	14
Maximum Preload	255	42
Ballnut Weight (lbs)	0.50	0.50

**Based on recommended Preload.

Accessories

Mounting Flange Part #	R-20-3	R-21-3*
Wiper Kit Part #	R-20-4	R-21-4
Flange Wiper Cap Part#	R-20-4F	R-21-4F

Technical Info:

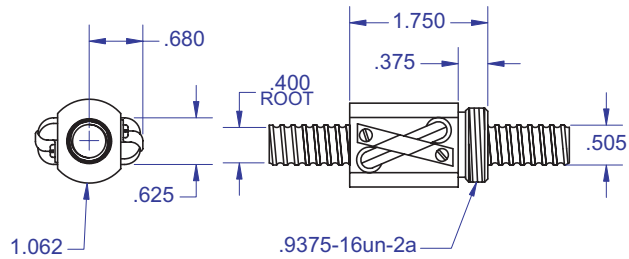
Bearing Mounts and Machined Ends page 80-85
 Lubrication information page 15
 On-line Resources page 3
 (configurable CAD drawings and more)

WANT MORE PRODUCTS?

R/B/S Visit our web site at
www.rockfordballscrew.com

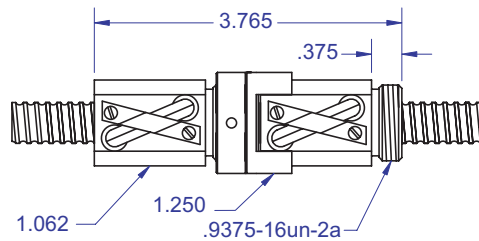
The specifications and data in this publication are deemed to be accurate and reliable and are subject to change without notice.

Standard Ball Screw

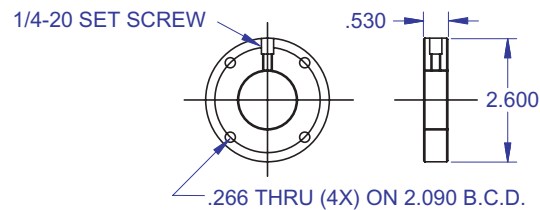


Ball bearing nominal diameter 1/8". Average ball quantity per nut is 70.

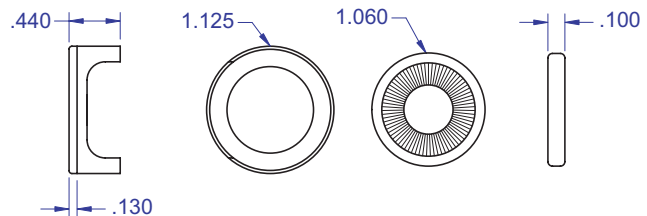
Preloaded Ball Screw



Mounting Flange

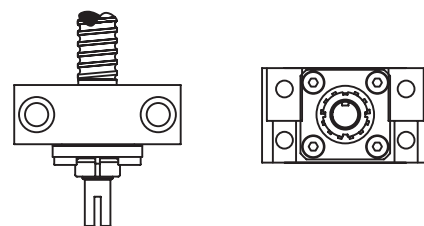


Wiper Kit (2 wipers and rear end cap)



Bearing Mount

PLEASE NOTE
 Technical drawings and information can vary depending on which Bearing Mount is desired. See pages 80-85 for details.

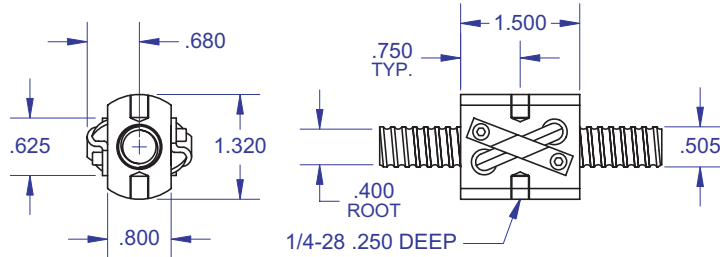


BALL SCREWS

R22/R23

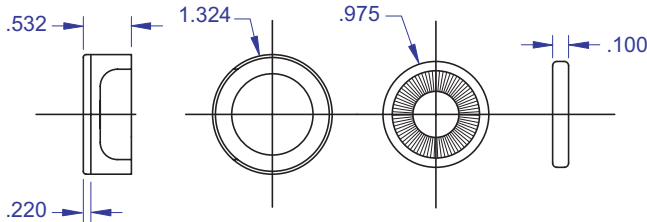


Standard Ball Screw

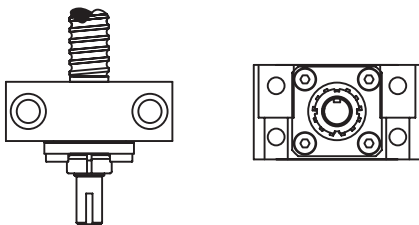


Ball bearing nominal diameter 1/8". Average ball quantity per nut is 70.

Wiper Kit



Bearing Mount



PLEASE NOTE
 Technical drawings and information can vary depending on which Bearing Mount is desired. See pages 80-85 for details.

.500 x .500
 DIAMETER LEAD

Standard Ball Screw

Ball Screw Part # RH	R-22-1*	R-23-1
Ball Nut Part # RH	R-22-2*	R-23-2
Dynamic Load (lbs) for 1,000,000 (in)	140	850
Max. Static Load (lbs)	750	4,150
Ballnut Weight (lbs)	0.30	0.30
Ball screw Weight (lbs/ft)	0.58	0.58

*Stainless Steel

Accessories

Wiper Kit Part #	R-22-4	R-23-4
------------------	--------	--------

Technical Info:

Bearing Mounts and Machined Ends page 80-85
 Lubrication information page 15
 On-line Resources page 3 (configurable CAD drawings and more)

WANT MORE PRODUCTS?

Visit our web site at **R/B/S**
www.rockfordballscrew.com

The specifications and data in this publication are deemed to be accurate and reliable and are subject to change without notice.

.631 x .200
DIAMETER LEAD

BALL SCREWS

R30/R31/R32



Standard Ball Screw

Ball Screw Part # RH	R-30-1	R-32-1*
Ball Screw Part # LH	R-31-1	
Ball Nut Part # RH	R-30-2	R-32-2*
Ball Nut Part # LH	R-31-2	
Dynamic Load (lbs) for 1,000,000 (in)	825	170
Max. Static Load (lbs)	6,250	1,250
Ballnut Weight (lbs)	0.26	0.26
Ballscrew Weight (lbs/ft)	0.83	0.83

*Stainless Steel

Preloaded Ball Screw

Preload Screw Part # RH	RP-30-1	RP-32-1*
Preload Screw Part # LH	RP-31-1	
Preload Ballnut Part # RH	RP-30-2	RP-32-2*
Preload Nut Part # LH	RP-31-2	
Dynamic Load (lbs)** for 1,000,000 (in)	742	153
Max. Static Load (lbs)**	6,167	1,233
Recommended Preload	83	17
Maximum Preload	249	51
Ballnut Weight (lbs)	0.52	0.52

**Based on recommended Preload.

Accessories

Mounting Flange Part # RH	R-30-3	R-32-3
Mounting Flange Part # LH	R-31-3	
Wiper Kit Part # RH	R-30-4	R-32-4
Flange Wiper Cap Part#	R-30-4F R-31-4F	R-32-4F

Technical Info:

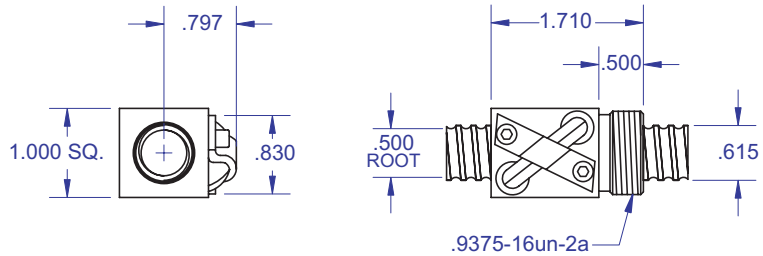
Bearing Mounts and Machined Ends	page 80-85
Lubrication information	page 15
On-line Resources	page 3
(configurable CAD drawings and more)	

WANT MORE PRODUCTS?

R/B/S Visit our web site at
www.rockfordballscrew.com.

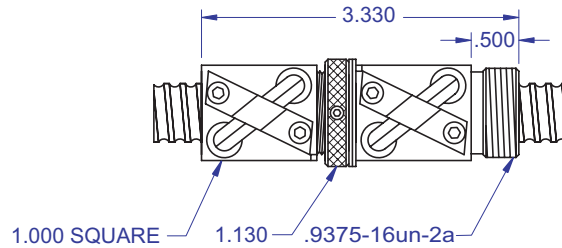
The specifications and data in this publication are deemed to be accurate and reliable and are subject to change without notice.

Standard Ball Screw

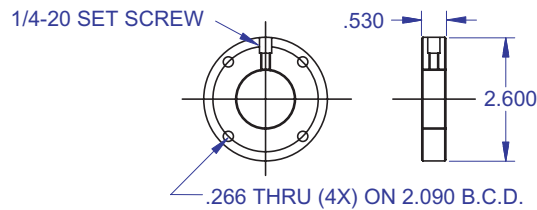


Ball bearing nominal diameter 1/8". Average ball quantity per nut is 67.

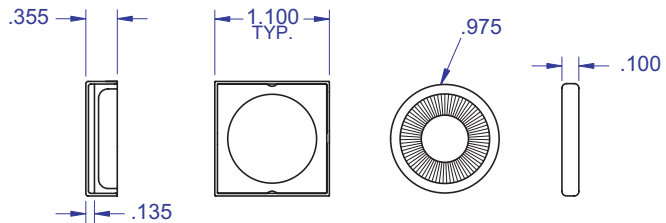
Preloaded Ball Screw



Mounting Flange

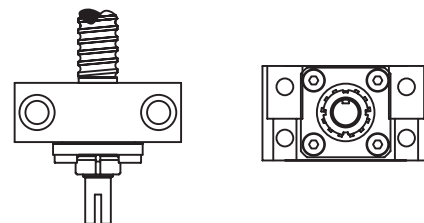


Wiper Kit



Bearing Mount

PLEASE NOTE
Technical drawings and information can vary depending on which Bearing Mount is desired. See pages 80-85 for details.



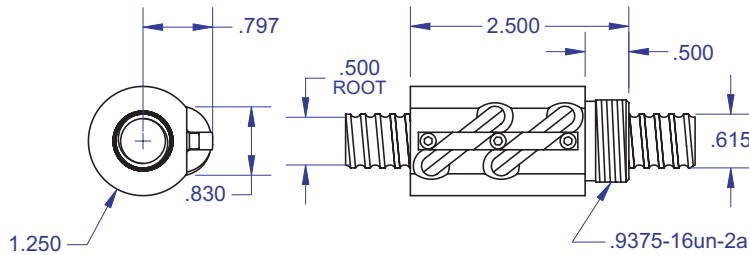
BALL SCREWS

R30A



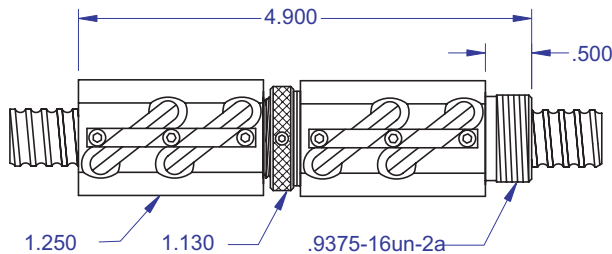
.631 x .200
DIAMETER LEAD

Standard Ball Screw

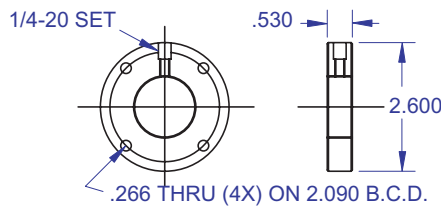


Ball bearing nominal diameter 1/8". Average ball quantity per nut is 134.

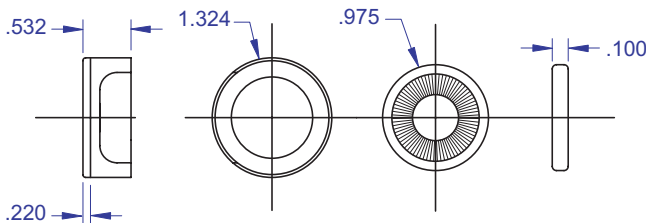
Preloaded Ball Screw



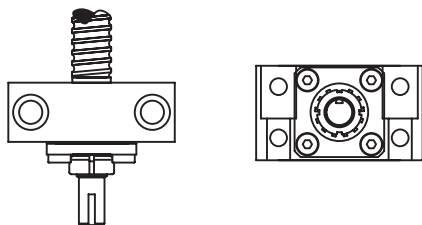
Mounting Flange



Wiper Kit



Bearing Mount



PLEASE NOTE

Technical drawings and information can vary depending on which Bearing Mount is desired. See pages 80-85 for details.

Standard Ball Screw

Ball Screw Part #	R-30A-1
Ball Nut Part #	R-30A-2
Dynamic Load (lbs) for 1,000,000 (in)	1,650
Max. Static Load (lbs)	9,000
Ballnut Weight (lbs)	0.51
Ballscrew Weight (lbs/ft)	0.83

Preloaded Ball Screw

Preload Screw Part #	RP-30A-1
Preload Ballnut Part #	RP-30A-2
Dynamic Load (lbs)** for 1,000,000 (in)	1,485
Max. Static Load (lbs)**	8,835
Recommended Preload	165
Maximum Preload	495
Ballnut Weight (lbs)	1.02

**Based on recommended Preload.

Accessories

Mounting Flange Part #	R-30A-3
Wiper Kit Part #	R-30A-4
Flange Wiper Cap Part#	R-30A-4F

Technical Info:

Bearing Mounts and Machined Ends	page 80-85
Lubrication information	page 15
On-line Resources (configurable CAD drawings and more)	page 3

WANT MORE PRODUCTS?

Visit our web site at **R/B/S**
www.rockfordballscrew.com. ●/●/●

The specifications and data in this publication are deemed to be accurate and reliable and are subject to change without notice.

.750 x .200
DIAMETER LEAD

BALL SCREWS

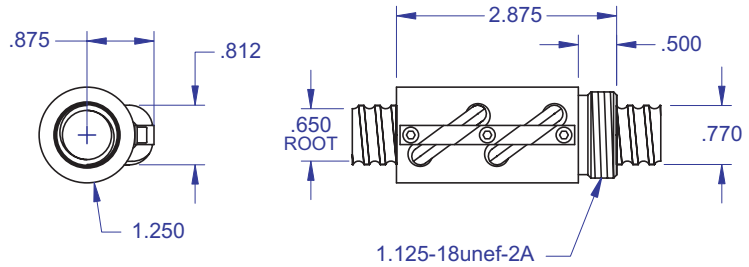


R34

Standard Ball Screw

Ball Screw Part #	R-34-1
Ball Nut Part #	R-34-2
Dynamic Load (lbs) for 1,000,000 (in)	1,900
Max. Static Load (lbs)	17,800
Ballnut Weight (lbs)	0.53
Ballscrew Weight (lbs/ft)	1.35

Standard Ball Screw

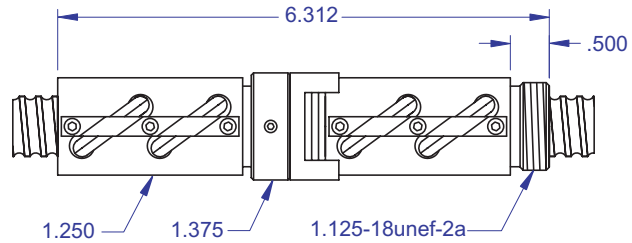


Ball bearing nominal diameter 1/8". Average ball quantity per nut is 168.

Preloaded Ball Screw

Preload Screw Part #	RP-34-1
Preload Ballnut Part #	RP-34-2
Dynamic Load (lbs)** for 1,000,000 (in)	1,710
Max. Static Load (lbs)**	17,610
Recommended Preload	190
Maximum Preload	570
Ballnut Weight (lbs)	1.06

Preloaded Ball Screw

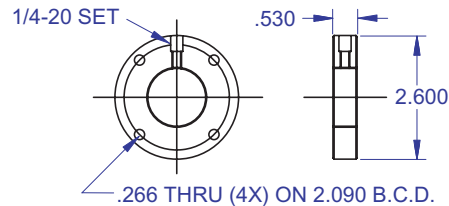


**Based on recommended Preload.

Accessories

Mounting Flange Part #	R-34-3
Wiper Kit Part #	R-34-4
Flange Wiper Cap Part#	R-34-4F

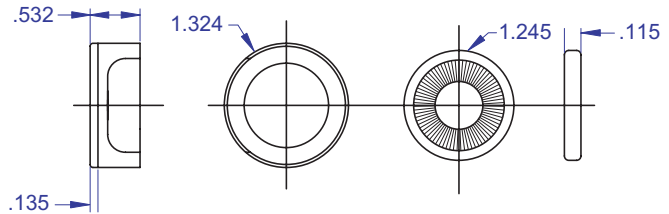
Mounting Flange



Technical Info:

Bearing Mounts and Machined Ends page 80-85
 Lubrication information page 15
 On-line Resources page 3
 (configurable CAD drawings and more)

Wiper Kit



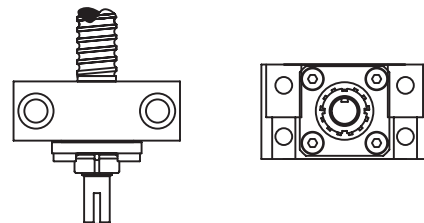
WANT MORE PRODUCTS?

R/B/S Visit our web site at
www.rockfordballscrew.com

The specifications and data in this publication are deemed to be accurate and reliable and are subject to change without notice.

PLEASE NOTE

Technical drawings and information can vary depending on which Bearing Mount is desired. See pages 80-85 for details.



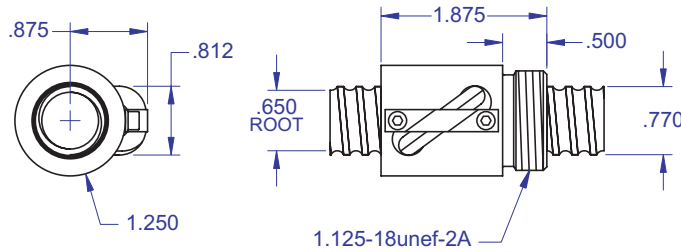
BALL SCREWS

R35/R36



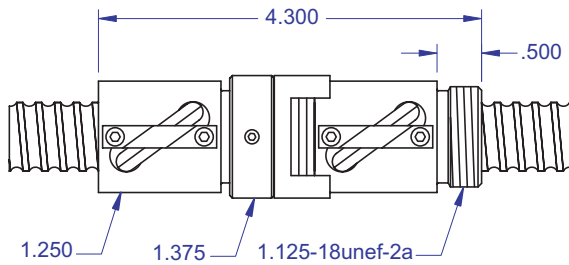
.750 x .200
DIAMETER LEAD

Standard Ball Screw

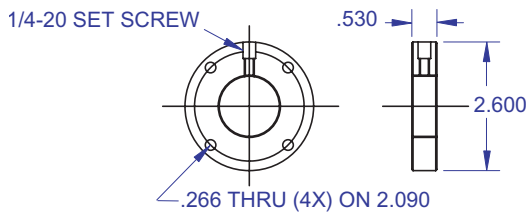


Ball bearing nominal diameter 1/8". Average ball quantity per nut is 84.

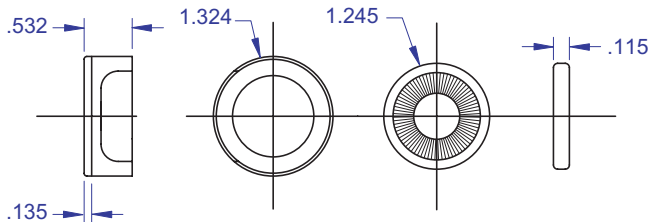
Preloaded Ball Screw



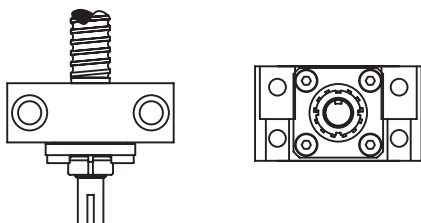
Mounting Flange



Wiper Kit



Bearing Mount



PLEASE NOTE

Technical drawings and information can vary depending on which Bearing Mount is desired. See pages 80-85 for details.

Standard Ball Screw

Ball Screw Part #	R-35-1	R-36-1*
Ball Nut Part #	R-35-2	R-36-2*
Dynamic Load (lbs) for 1,000,000 (in)	950	160
Max. Static Load (lbs)	8,900	1,350
Ballnut Weight (lbs)	0.33	0.33
Ballscrew Weight (lbs/ft)	1.35	1.35

*Stainless Steel

Preloaded Ball Screw

Preload Screw Part #	RP-35-1	RP-36-1*
Preload Ballnut Part #	RP-35-2	RP-36-2*
Dynamic Load (lbs)** for 1,000,000 (in)	855	144
Max. Static Load (lbs)**	8,805	1,334
Recommended Preload	95	16
Maximum Preload	285	48
Ballnut Weight (lbs)	0.66	0.66

**Based on recommended Preload.

Accessories

Mounting Flange Part #	R-35-3	R-36-3
Wiper Kit Part #	R-35-4	R-36-4
Flange Wiper Cap Part#	R-35-4F	R-36-4F

Technical Info:

Bearing Mounts and Machined Ends	page 80-85
Lubrication information	page 15
On-line Resources (configurable CAD drawings and more)	page 3

WANT MORE PRODUCTS?

Visit our web site at **R/B/S**
www.rockfordballscrew.com. ●/●/●

The specifications and data in this publication are deemed to be accurate and reliable and are subject to change without notice.

.750 x .500
DIAMETER LEAD

BALL SCREWS

R37/R38



Standard Ball Screw

Ball Screw Part #	R-37-1	R-38-1*
Ball Nut Part #	R-37-2	R-38-2*
Dynamic Load (lbs) for 1,000,000 (in)	3,400	600
Max. Static Load (lbs)	21,000	3,900
Ballnut Weight (lbs)	0.68	0.68
Ballscrew Weight (lbs/ft)	1.35	1.35

*Stainless Steel

Preloaded Ball Screw

Preload Screw Part #	RP35-1	RP36-1*
Preload Ballnut Part #	RP35-2	RP36-2*
Dynamic Load (lbs)** for 1,000,000 (in)	3,060	540
Max. Static Load (lbs)**	20,660	3,840
Recommended Preload	340	60
Maximum Preload	1,020	180
Ballnut Weight (lbs)	1.36	1.36

**Based on recommended Preload.

Accessories

Mounting Flange Part #	R-37-3	R-38-3*
Wiper Kit Part #	R-37-4	R-38-4
Flange Wiper Cap Part#	R-37-4F	R-38-4F

Technical Info:

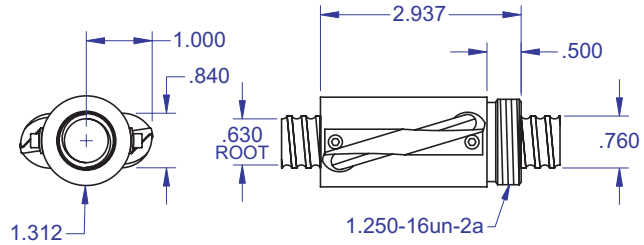
Bearing Mounts and Machined Ends page 80-85
 Lubrication information page 15
 On-line Resources page 3
 (configurable CAD drawings and more)

WANT MORE PRODUCTS?

R/B/S Visit our web site at www.rockfordballscrew.com.

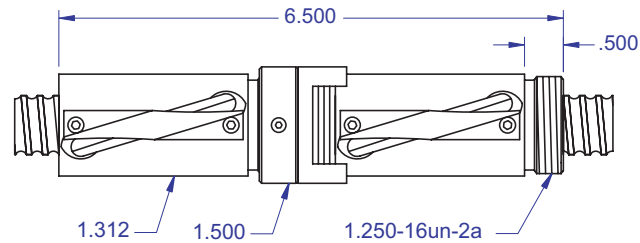
The specifications and data in this publication are deemed to be accurate and reliable and are subject to change without notice.

Standard Ball Screw

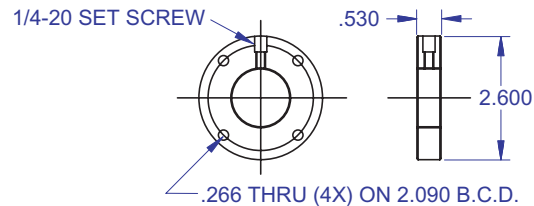


Ball bearing nominal diameter 5/32". Average ball quantity per nut is 150.

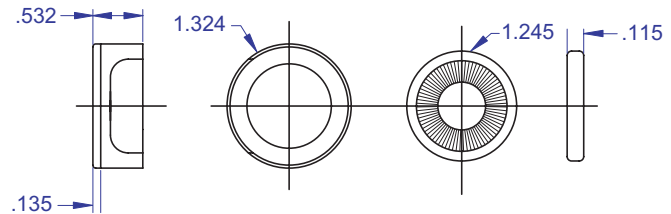
Preloaded Ball Screw



Mounting Flange



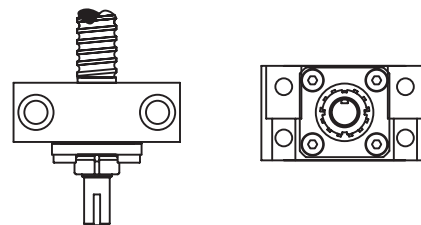
Wiper Kit



Bearing Mount

PLEASE NOTE

Technical drawings and information can vary depending on which Bearing Mount is desired. See pages 80-85 for details.



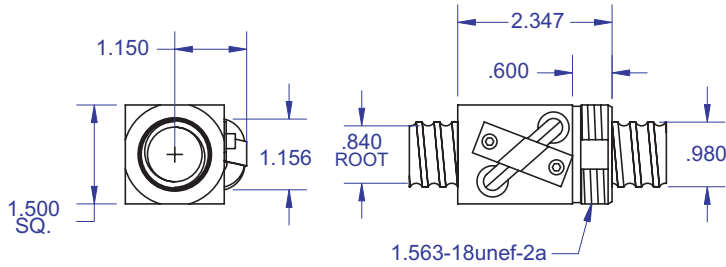
BALL SCREWS

R40/R41



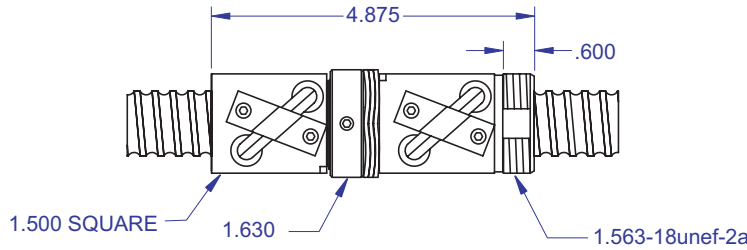
1.000 x .250
DIAMETER LEAD

Standard Ball Screw

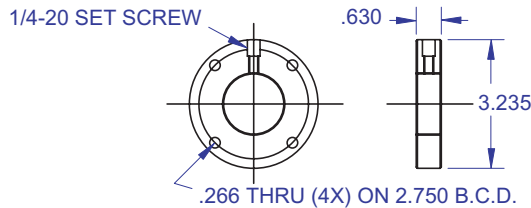


Ball bearing nominal diameter 5/32". Average ball quantity per nut is 85.

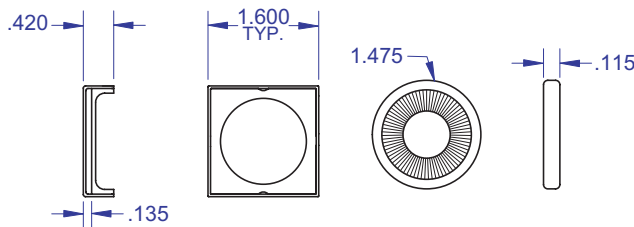
Preloaded Ball Screw



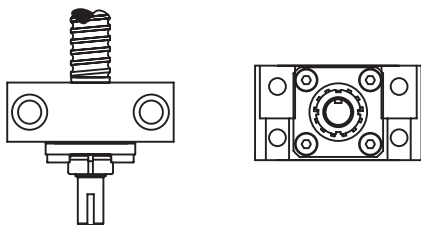
Mounting Flange



Wiper Kit



Bearing Mount



PLEASE NOTE

Technical drawings and information can vary depending on which Bearing Mount is desired. See pages 80-85 for details.

Standard Ball Screw

Ball Screw Part # RH	R-40-1	
Ball Screw Part # LH		R-41-1
Ball Nut Part # RH	R-40-2	
Ball Nut Part # LH		R-41-2
Dynamic Load (lbs) for 1,000,000 (in)	1,625	1,625
Max. Static Load (lbs)	13,000	13,000
Ballnut Weight (lbs)	0.83	0.83
Ballscrew Weight (lbs/ft)	2.18	2.18

Preloaded Ball Screw

Preload Screw Part # RH	RP-40-1	
Preload Screw Part # LH		RP-41-1
Preload Ballnut Part # RH	RP-40-2	
Preload Ballnut Part # LH		RP-41-2
Dynamic Load (lbs)** for 1,000,000 (in)	1,462	1,462
Max. Static Load (lbs)**	12,837	12,837
Recommended Preload	163	163
Maximum Preload	489	489
Ballnut Weight (lbs)	1.66	1.66

**Based on recommended Preload.

Accessories

Mounting Flange Part #	R-40-3	R-41-3
Wiper Kit Part #	R-40-4	R-41-4
Flange Wiper Cap Part#	R-40-4F	R-41-4F

Technical Info:

Bearing Mounts and Machined Ends	page 80-85
Lubrication information	page 15
On-line Resources (configurable CAD drawings and more)	page 3

WANT MORE PRODUCTS?

Visit our web site at **R/B/S**
www.rockfordballscrew.com. ●●●

The specifications and data in this publication are deemed to be accurate and reliable and are subject to change without notice.

1.000 x .250
DIAMETER LEAD

BALL SCREWS

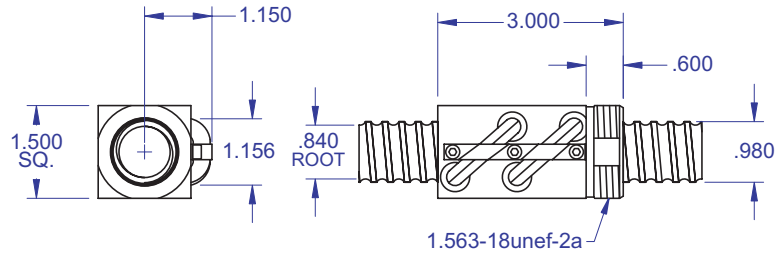
R40A



Standard Ball Screw

Ball Screw Part #	R-40A-1
Ball Nut Part #	R-40A-2
Dynamic Load (lbs) for 1,000,000 (in)	3,250
Max. Static Load (lbs)	26,000
Ballnut Weight (lbs)	1.12
Ballscrew Weight (lbs/ft)	2.18

Standard Ball Screw

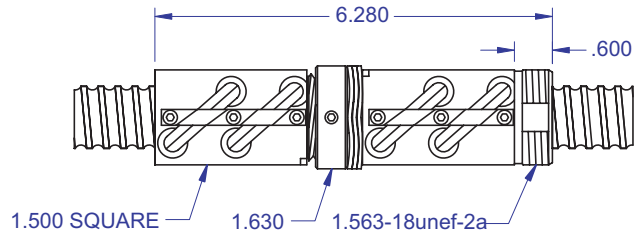


Ball bearing nominal diameter 5/32". Average ball quantity per nut is 170.

Preloaded Ball Screw

Preload Screw Part #	RP-40A-1
Preload Ballnut Part #	RP-40A-2
Dynamic Load (lbs)** for 1,000,000 (in)	2,925
Max. Static Load (lbs)**	25,675
Recommended Preload	325
Maximum Preload	975
Ballnut Weight (lbs)	2.24

Preloaded Ball Screw

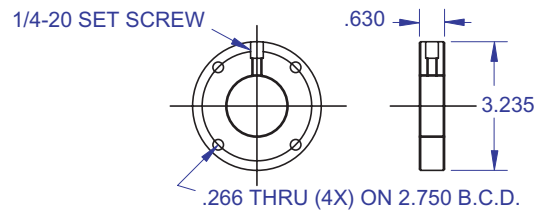


**Based on recommended Preload.

Accessories

Mounting Flange Part #	R-40A-3
Wiper Kit Part #	R-40A-4
Flange Wiper Cap Part#	R-40-4F

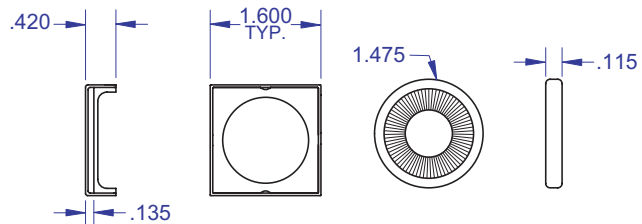
Mounting Flange



Technical Info:

Bearing Mounts and Machined Ends	page 80-85
Lubrication information	page 15
On-line Resources	page 3
(configurable CAD drawings and more)	

Wiper Kit



WANT MORE PRODUCTS?

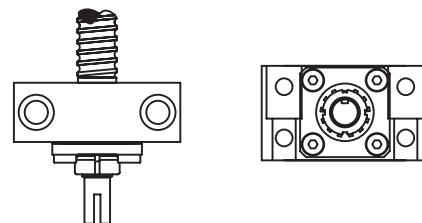
R/B/S Visit our web site at
www.rockfordballscrew.com.

The specifications and data in this publication are deemed to be accurate and reliable and are subject to change without notice.

Bearing Mount

PLEASE NOTE

Technical drawings and information can vary depending on which Bearing Mount is desired. See pages 80-85 for details.



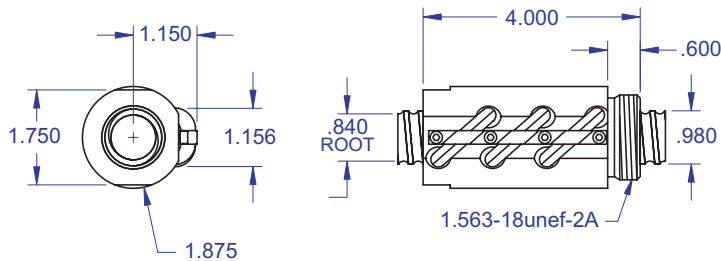
BALL SCREWS

R40B



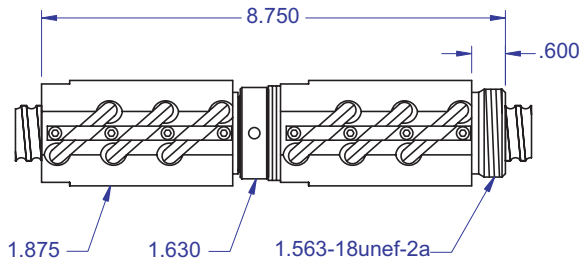
1.000 x .250
DIAMETER LEAD

Standard Ball Screw

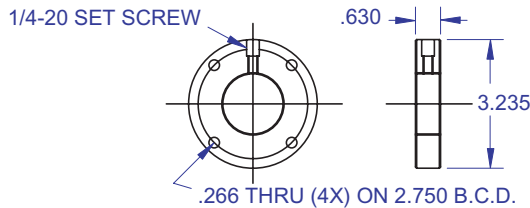


Ball bearing nominal diameter 5/32". Average ball quantity per nut is 255.

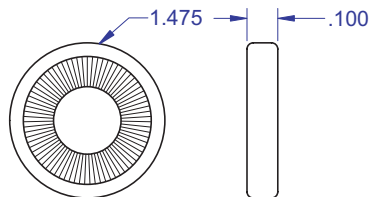
Preloaded Ball Screw



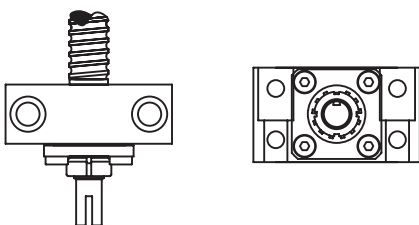
Mounting Flange



Wiper Kit



Bearing Mount



PLEASE NOTE

Technical drawings and information can vary depending on which Bearing Mount is desired. See pages 80-85 for details.

Standard Ball Screw

Ball Screw Part #	R-40B-1
Ball Nut Part #	R-40B-2
Dynamic Load (lbs) for 1,000,000 (in)	4,500
Max. Static Load (lbs)	39,000
Ballnut Weight (lbs)	1.92
Ballscrew Weight (lbs/ft)	2.18

Preloaded Ball Screw

Preload Screw Part #	RP-40B-1
Preload Ballnut Part #	RP-40B-2
Dynamic Load (lbs)** for 1,000,000 (in)	4,050
Max. Static Load (lbs)**	38,550
Recommended Preload	450
Maximum Preload	1,350
Ballnut Weight (lbs)	3.84

**Based on recommended Preload.

Accessories

Mounting Flange Part #	R-40B-3
Wiper Kit Part #	R-40B-4
Flange Wiper Cap Part#	R-40B-4F

Technical Info:

Bearing Mounts and Machined Ends	page 80-85
Lubrication information	page 15
On-line Resources (configurable CAD drawings and more)	page 3

WANT MORE PRODUCTS?

Visit our web site at **R/B/S**
www.rockfordballscrew.com. ●/●/●

The specifications and data in this publication are deemed to be accurate and reliable and are subject to change without notice.

1.000 x .250
DIAMETER LEAD

BALL SCREWS

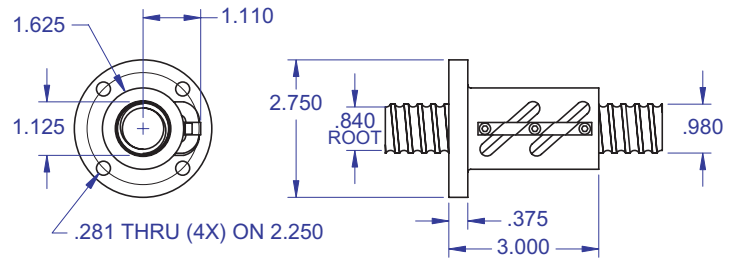
R40RF/R41LF



Standard Ball Screw

Ball Screw Part #	R-40RF-1
Ball Nut Part #	R-40RF-2
Dynamic Load (lbs) for 1,000,000 (in)	3,250
Max. Static Load (lbs)	26,000
Ballnut Weight (lbs)	1.54
Ballscrew Weight (lbs/ft)	2.18

Standard Ball Screw



Ball bearing nominal diameter 5/32". Average ball quantity per nut is 170.

Standard Ball Screw

Ball Screw Part #	R-41LF-1
Ball Nut Part #	R-41LF-2
Dynamic Load (lbs) for 1,000,000 (in)	3,250
Max. Static Load (lbs)	26,000
Ballnut Weight (lbs)	1.54
Ballscrew Weight (lbs/ft)	2.18

Accessories

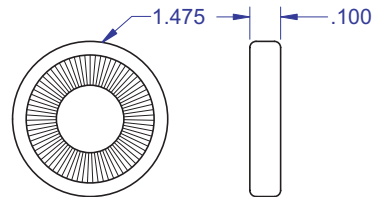
Wiper Kit Part #	R-40B-4
------------------	---------



Technical Info:

Bearing Mounts and Machined Ends	page 80-85
Lubrication information	page 15
On-line Resources (configurable CAD drawings and more)	page 3

Wiper Kit



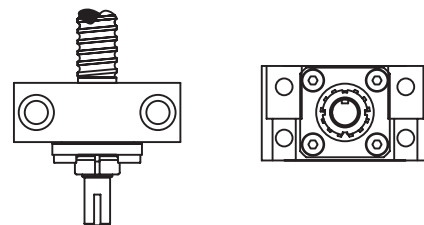
WANT MORE PRODUCTS?

R/B/S Visit our web site at www.rockfordballscrew.com.

The specifications and data in this publication are deemed to be accurate and reliable and are subject to change without notice.

Bearing Mount

PLEASE NOTE
Technical drawings and information can vary depending on which Bearing Mount is desired. See pages 80-85 for details.



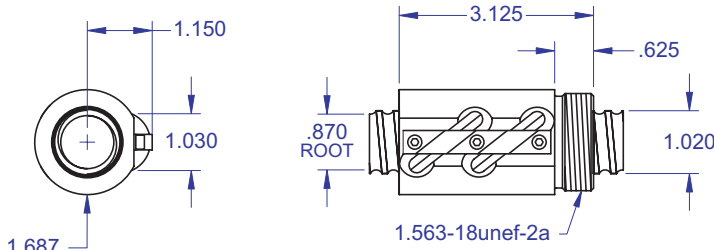
BALL SCREWS



R42

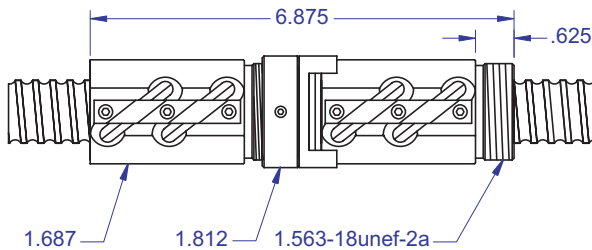
1.000 x .250
DIAMETER LEAD

Standard Ball Screw - R40RF



Ball bearing nominal diameter 5/32". Average ball quantity per nut is 178.

Preloaded Ball Screw



Standard Ball Screw

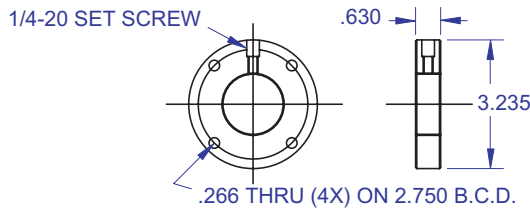
Ball Screw Part #	R-42-1
Ball Nut Part #	R-42-2
Dynamic Load (lbs) for 1,000,000 (in)	3,450
Max. Static Load (lbs)	30,000
Ballnut Weight (lbs)	1.06
Ballscrew Weight (lbs/ft)	2.40

Preloaded Ball Screw

Preload Screw Part #	RP-42-1
Preload Ballnut Part #	RP-42-2
Dynamic Load (lbs)** for 1,000,000 (in)	3,105
Max. Static Load (lbs)**	29,655
Recommended Preload	345
Maximum Preload	1,035
Ballnut Weight (lbs)	2.12

**Based on recommended Preload.

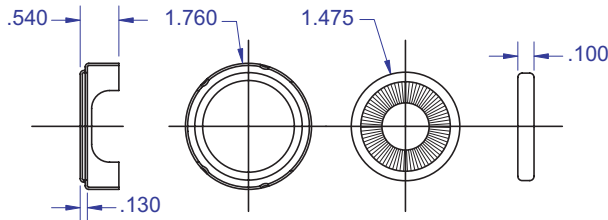
Mounting Flange



Accessories

Mounting Flange Part #	R-42-3
Wiper Kit Part #	R-42-4
Flange Wiper Cap Part#	R-42-4F

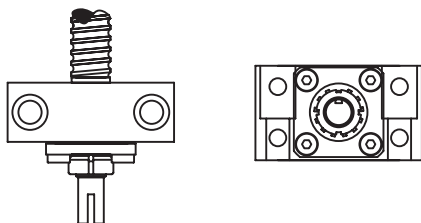
Wiper Kit



Technical Info:

Bearing Mounts and Machined Ends	page 80-85
Lubrication information	page 15
On-line Resources (configurable CAD drawings and more)	page 3

Bearing Mount



PLEASE NOTE
Technical drawings and information can vary depending on which Bearing Mount is desired. See pages 80-85 for details.

WANT MORE PRODUCTS?

Visit our web site at **R/B/S**
www.rockfordballscrew.com. ●/●/●

The specifications and data in this publication are deemed to be accurate and reliable and are subject to change without notice.

1.000 x **.500**
DIAMETER LEAD

BALL SCREWS

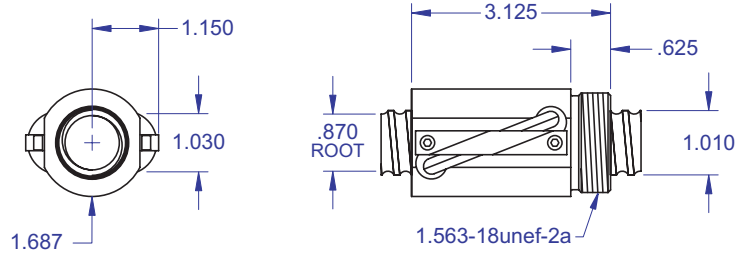
R43



Standard Ball Screw

Ball Screw Part #	R-43-1
Ball Nut Part #	R-43-2
Dynamic Load (lbs) for 1,000,000 (in)	4,250
Max. Static Load (lbs)	30,000
Ballnut Weight (lbs)	1.06
Ballscrew Weight (lbs/ft)	2.41

Standard Ball Screw

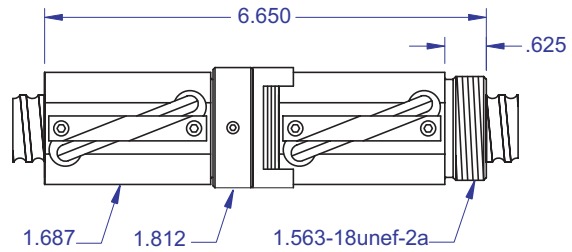


Ball bearing nominal diameter 5/32". Average ball quantity per nut is 186.

Preloaded Ball Screw

Preload Screw Part #	RP-43-1
Preload Ballnut Part #	RP-43-2
Dynamic Load (lbs)** for 1,000,000 (in)	3,825
Max. Static Load (lbs)**	29,575
Recommended Preload	425
Maximum Preload	1,275
Ballnut Weight (lbs)	2.12

Preloaded Ball Screw

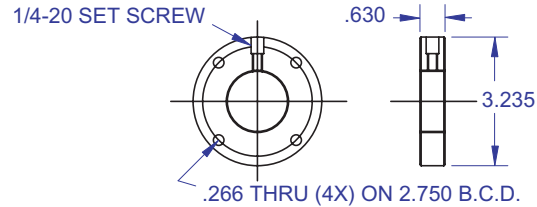


**Based on recommended Preload.

Accessories

Mounting Flange Part #	R-43-3
Wiper Kit Part #	R-43-4
Flange Wiper Cap Part#	R-43-4F

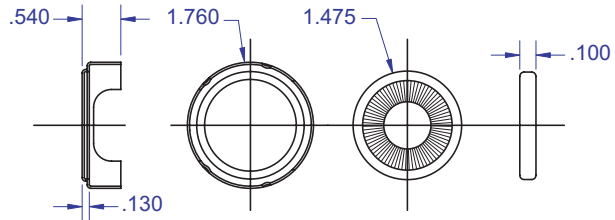
Mounting Flange



Technical Info:

Bearing Mounts and Machined Ends page 80-85
 Lubrication information page 15
 On-line Resources page 3
 (configurable CAD drawings and more)

Wiper Kit



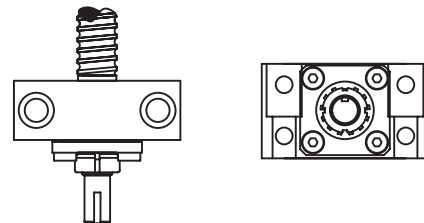
WANT MORE PRODUCTS?

R/B/S Visit our web site at
www.rockfordballscrew.com

The specifications and data in this publication are deemed to be accurate and reliable and are subject to change without notice.

Bearing Mount

PLEASE NOTE
 Technical drawings and information can vary depending on which Bearing Mount is desired. See pages 80-85 for details.



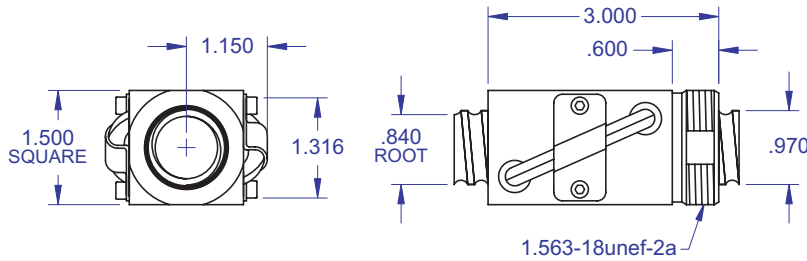
BALL SCREWS



R44

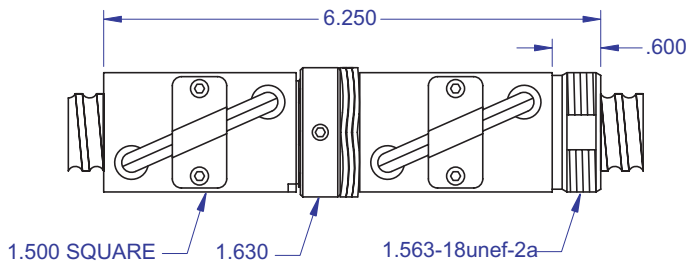
1.000 x 1.000
DIAMETER LEAD

Standard Ball Screw



Ball bearing nominal diameter 5/32". Average ball quantity per nut is 98.

Preloaded Ball Screw



Standard Ball Screw

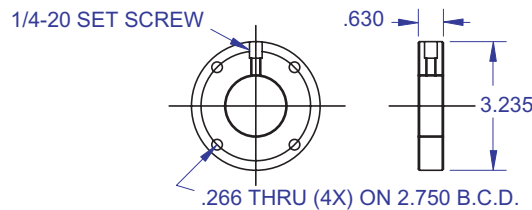
Ball Screw Part #	R-44-1
Ball Nut Part #	R-44-2
Dynamic Load (lbs) for 1,000,000 (in)	2,300
Max. Static Load (lbs)	11,500
Ballnut Weight (lbs)	1.12
Ballscrew Weight (lbs/ft)	2.17

Preloaded Ball Screw

Preload Screw Part #	RP-44-1
Preload Ballnut Part #	RP-44-2
Dynamic Load (lbs)** for 1,000,000 (in)	2,070
Max. Static Load (lbs)**	11,270
Recommended Preload	230
Maximum Preload	690
Ballnut Weight (lbs)	2.24

**Based on recommended Preload.

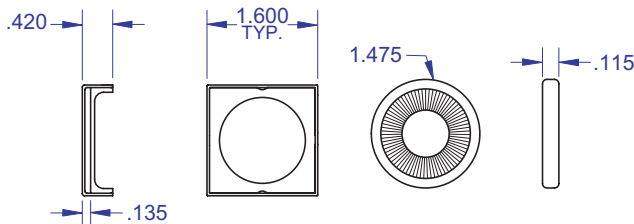
Mounting Flange



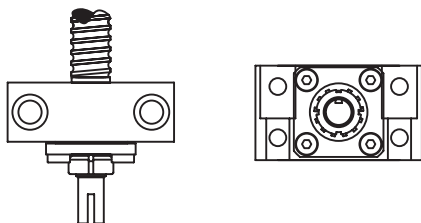
Accessories

Mounting Flange Part #	R-44-3
Wiper Kit Part #	R-44-4
Flange Wiper Cap Part#	R-44-4F

Wiper Kit



Bearing Mount



PLEASE NOTE

Technical drawings and information can vary depending on which Bearing Mount is desired. See pages 80-85 for details.

Technical Info:

Bearing Mounts and Machined Ends	page 80-85
Lubrication information	page 15
On-line Resources (configurable CAD drawings and more)	page 3

WANT MORE PRODUCTS?

Visit our web site at **R/B/S**
www.rockfordballscrew.com. ●●●

The specifications and data in this publication are deemed to be accurate and reliable and are subject to change without notice.

1.150 x .200
DIAMETER LEAD

BALL SCREWS

R45/R46/R47



Standard Ball Screw

Ball Screw Part # RH	R-45-1	R-46-1*
Ball Screw Part # LH	R-47-1	
Ball Nut Part # RH	R-45-2	R-46-2*
Ball Nut Part # LH	R-47-2	
Dynamic Load (lbs) for 1,000,000 (in)	2,450	490
Max. Static Load (lbs)	24,500	4,600
Ballnut Weight (lbs)	0.81	0.81
Ballscrew Weight (lbs/ft)	3.10	3.10

*Stainless Steel

Preloaded Ball Screw

Preload Screw Part #	RP-45-1	RP-46-1*
Preload Screw Part #	RP-47-1	
Preload Ballnut Part #	RP-45-2	RP-46-2*
Preload Ballnut Part #	RP-47-2	
Dynamic Load (lbs)** for 1,000,000 (in)	2,205	2,205
Max. Static Load (lbs)**	24,255	24,255
Recommended Preload	245	49
Maximum Preload	735	145
Ballnut Weight (lbs)	1.62	1.62

**Based on recommended Preload.

Accessories

Mounting Flange Part #	R-47-3	R-46-3*
Wiper Kit Part #	R-47-4	R-46-4*
Flange Wiper Cap Part#	R-45-4F	R-46-4F

Technical Info:

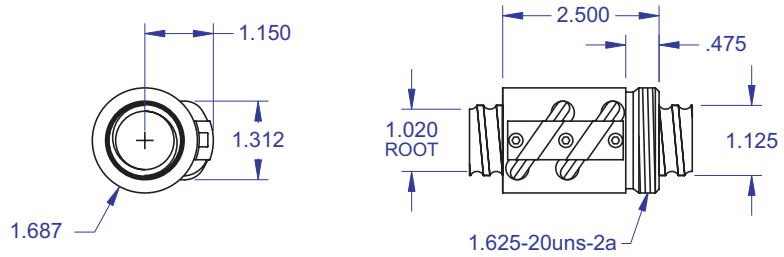
Bearing Mounts and Machined Ends page 80-85
 Lubrication information page 15
 On-line Resources page 3
 (configurable CAD drawings and more)

WANT MORE PRODUCTS?

R/B/S Visit our web site at
www.rockfordballscrew.com

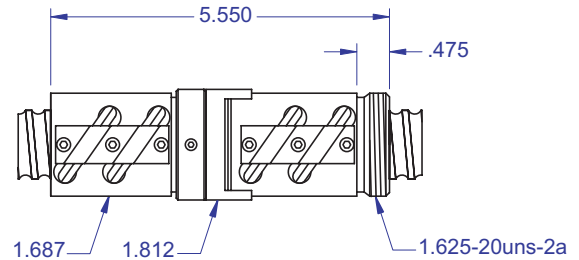
The specifications and data in this publication are deemed to be accurate and reliable and are subject to change without notice.

Standard Ball Screw

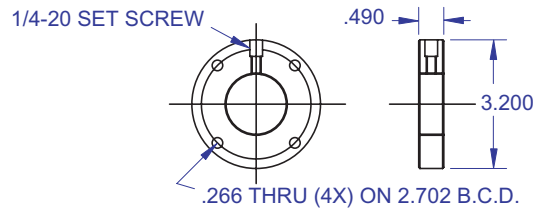


Ball bearing nominal diameter 1/8". Average ball quantity per nut is 244.

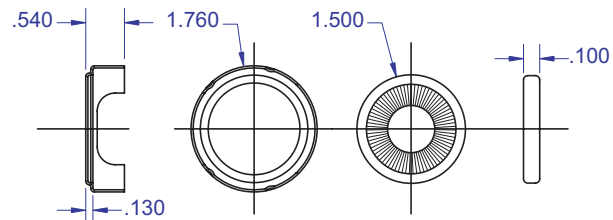
Preloaded Ball Screw



Mounting Flange



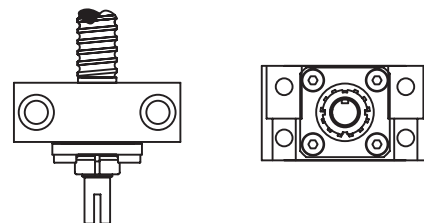
Wiper Kit



Bearing Mount

PLEASE NOTE

Technical drawings and information can vary depending on which Bearing Mount is desired. See pages 80-85 for details.



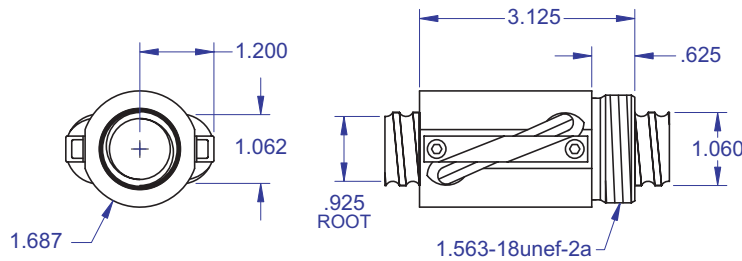
BALL SCREWS



R48

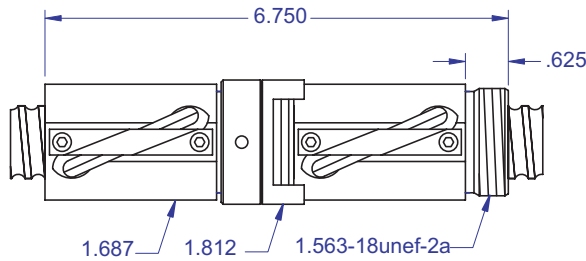
1.063 x .625
DIAMETER LEAD

Standard Ball Screw



Ball bearing nominal diameter 5/32". Average ball quantity per nut is 154.

Preloaded Ball Screw



Standard Ball Screw

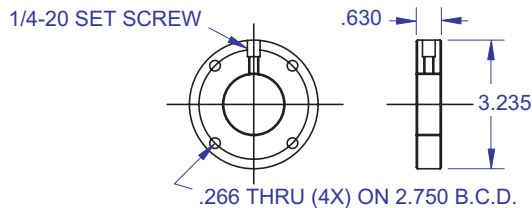
Ball Screw Part #	R-48-1
Ball Nut Part #	R-48-2
Dynamic Load (lbs) for 1,000,000 (in)	3,300
Max. Static Load (lbs)	21,000
Ballnut Weight (lbs)	1.06
Ballscrew Weight (lbs/ft)	2.85

Preloaded Ball Screw

Preload Screw Part #	RP-48-1
Preload Ballnut Part #	RP-48-2
Dynamic Load (lbs)** for 1,000,000 (in)	2,970
Max. Static Load (lbs)**	20,670
Recommended Preload	330
Maximum Preload	990
Ballnut Weight (lbs)	2.12

**Based on recommended Preload.

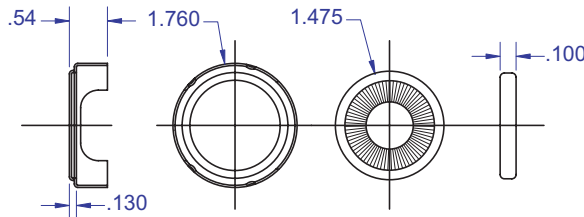
Mounting Flange



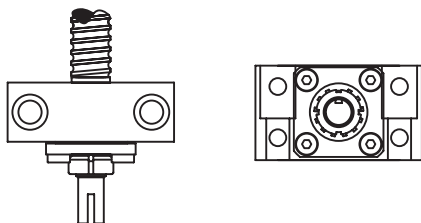
Accessories

Mounting Flange Part #	R-48-3
Wiper Kit Part #	R-48-4
Flange Wiper Cap Part#	R-48-4F

Wiper Kit



Bearing Mount



PLEASE NOTE

Technical drawings and information can vary depending on which Bearing Mount is desired. See pages 80-85 for details.

Technical Info:

Bearing Mounts and Machined Ends	page 80-85
Lubrication information	page 15
On-line Resources (configurable CAD drawings and more)	page 3

WANT MORE PRODUCTS?

Visit our web site at **R/B/S**
www.rockfordballscrew.com. ●/●/●

The specifications and data in this publication are deemed to be accurate and reliable and are subject to change without notice.

1.500 x .500
DIAMETER LEAD

BALL SCREWS

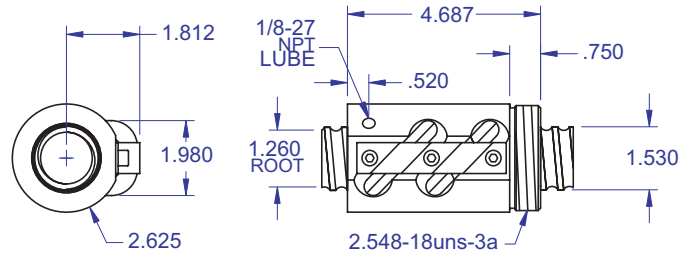


R50

Standard Ball Screw

Ball Screw Part #	R-50-1
Ball Nut Part #	R-50-2
Dynamic Load (lbs) for 1,000,000 (in)	9,050
Max. Static Load (lbs)	55,000
Ballnut Weight (lbs)	4.18
Ballscrew Weight (lbs/ft)	5.34

Standard Ball Screw

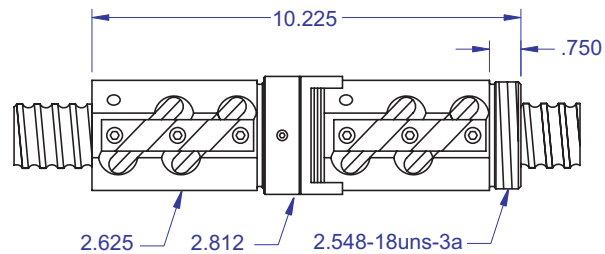


Ball bearing nominal diameter 5/16". Average ball quantity per nut is 102.

Preloaded Ball Screw

Preload Screw Part #	RP-50-1
Preload Ballnut Part #	RP-50-2
Dynamic Load (lbs)** for 1,000,000 (in)	8,145
Max. Static Load (lbs)**	54,095
Recommended Preload	905
Maximum Preload	2,715
Ballnut Weight (lbs)	8.36

Preloaded Ball Screw

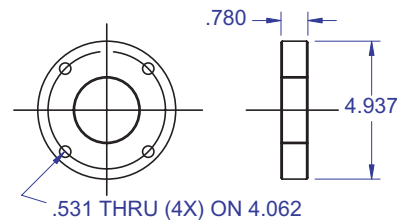


**Based on recommended Preload.

Accessories

Mounting Flange Part #	R-50-3
Wiper Kit Part #	R-50-4

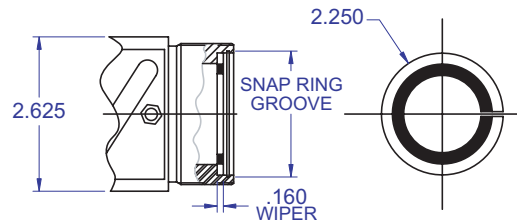
Mounting Flange



Technical Info:

Bearing Mounts and Machined Ends	page 80-85
Lubrication information	page 15
On-line Resources (configurable CAD drawings and more)	page 3

Wiper Kit



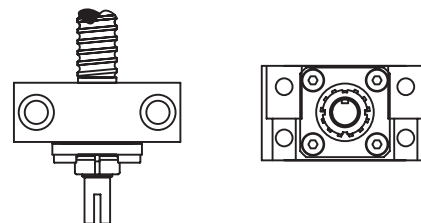
WANT MORE PRODUCTS?

R/B/S Visit our web site at www.rockfordballscrew.com.

The specifications and data in this publication are deemed to be accurate and reliable and are subject to change without notice.

PLEASE NOTE

Technical drawings and information can vary depending on which Bearing Mount is desired. See pages 80-85 for details.

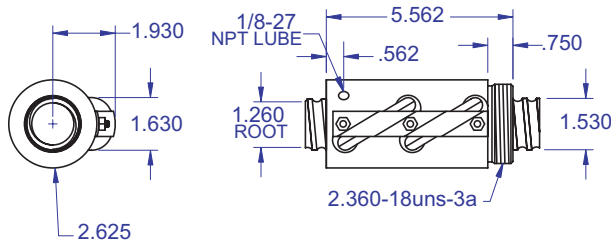


BALL SCREWS

R50A/R51A

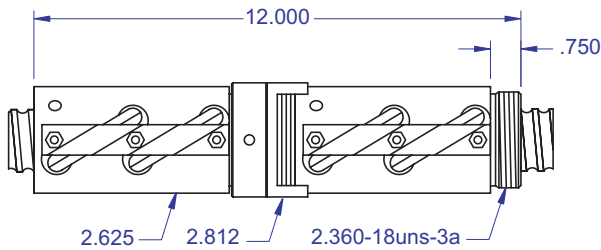


Standard Ball Screw

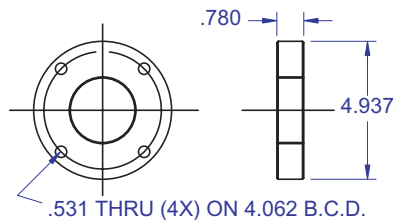


Ball bearing nominal diameter 5/16". Average ball quantity per nut is 140.

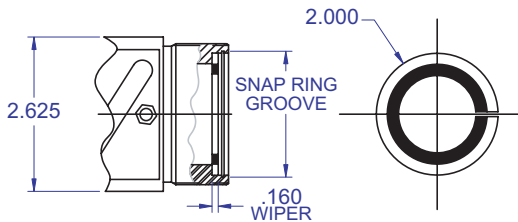
Preloaded Ball Screw



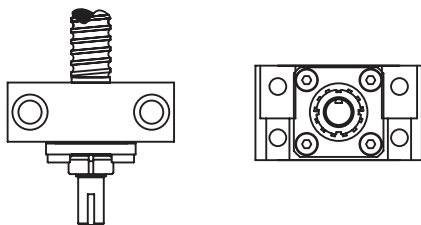
Mounting Flange



Wiper Kit



Bearing Mount



PLEASE NOTE

Technical drawings and information can vary depending on which Bearing Mount is desired. See pages 80-85 for details.

1.500 x .500

DIAMETER LEAD

Standard Ball Screw

Ball Screw Part # RH	R-50A-1	
Ball Screw Part # LH		R-51A-1
Ball Nut Part # RH	R-50A-2	
Ball Nut Part # LH		R-51A-2
Dynamic Load (lbs) for 1,000,000 (in)	12,900	12,900
Max. Static Load (lbs)	94,000	94,000
Ballnut Weight (lbs)	4.99	4.99
Ballscrew Weight (lbs/ft)	5.34	5.34

Preloaded Ball Screw

Preload Screw Part # RH	RP-50A-1	
Preload Screw Part # LH		RP-51A-1
Preload Ballnut Part # RH	RP-50A-2	
Preload Ballnut Part # LH		RP-51A-2

Dynamic Load (lbs)** for 1,000,000 (in)	11,610	11,610
Max. Static Load (lbs)**	92,710	92,710
Recommended Preload	1,290	1,290
Maximum Preload	3,870	3,870
Ballnut Weight (lbs)	9.98	9.98

**Based on recommended Preload.

Accessories

Mounting Flange Part #	R-50A-3	R-51A-3
Wiper Kit Part #	R-50A-4	R-51A-4

Technical Info:

Bearing Mounts and Machined Ends	page 80-85
Lubrication information	page 15
On-line Resources (configurable CAD drawings and more)	page 3

WANT MORE PRODUCTS?

Visit our web site at **R/B/S**
www.rockfordballscrew.com. ●/●/●

The specifications and data in this publication are deemed to be accurate and reliable and are subject to change without notice.

1.500 x .250
DIAMETER LEAD

BALL SCREWS

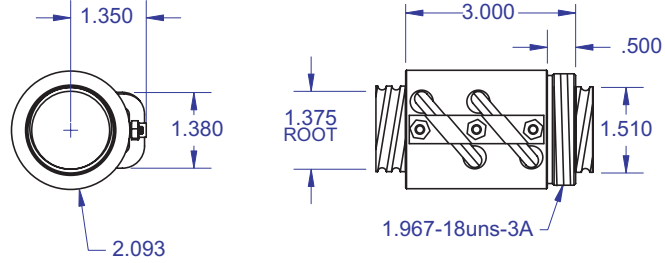
R53/R54



Standard Ball Screw

Ball Screw Part # LH	R-53-1	
Ball Screw Part # RH		R-54-1
Ball Nut Part # LH	R-53-2	
Ball Nut Part # RH		R-54-2
Dynamic Load (lbs) for 1,000,000 (in)	4,250	4,250
Max. Static Load (lbs)	44,800	44,800
Ballnut Weight (lbs)	1.23	1.23
Ballscrew Weight (lbs/ft)	5.60	5.60

Standard Ball Screw

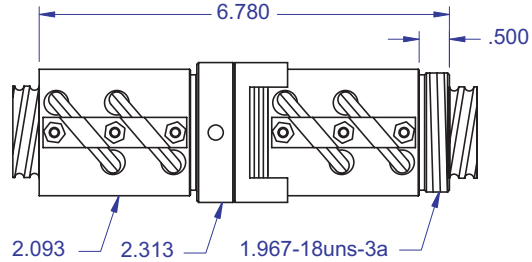


Ball bearing nominal diameter 5/32". Average ball quantity per nut is 260.

Preloaded Ball Screw

Preload Screw Part # LH	RP-53-1	
Preload Screw Part # RH		RP-54-1
Preload Ballnut Part # LH	RP-53-2	
Preload Ballnut Part # RH		RP-54-2
Dynamic Load (lbs)** for 1,000,000 (in)	3,825	3,825
Max. Static Load (lbs)**	44,375	44,375
Recommended Preload	425	425
Maximum Preload	1,275	1,275
Ballnut Weight (lbs)	2.46	2.46

Preloaded Ball Screw

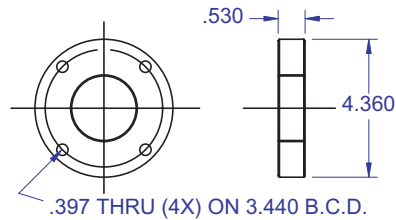


**Based on recommended Preload.

Accessories

Mounting Flange Part #	R-53-3	R-54-3
Wiper Kit Part #	R-53-4	R-54-4
Flange Wiper Cap Part#	R-53-4F	R-54-4F

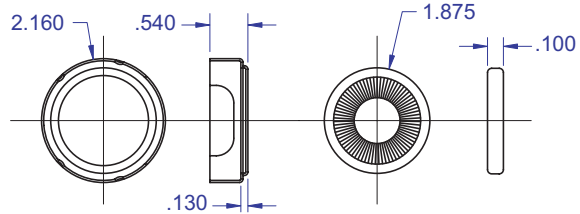
Mounting Flange



Technical Info:

Bearing Mounts and Machined Ends page 80-85
 Lubrication information page 15
 On-line Resources page 3
 (configurable CAD drawings and more)

Wiper Kit



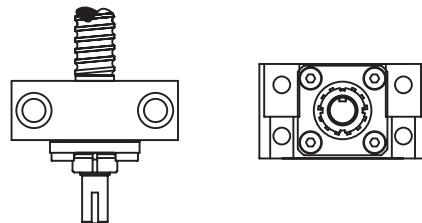
WANT MORE PRODUCTS?

R/B/S Visit our web site at
www.rockfordballscrew.com

The specifications and data in this publication are deemed to be accurate and reliable and are subject to change without notice.

PLEASE NOTE

Technical drawings and information can vary depending on which Bearing Mount is desired. See pages 80-85 for details.



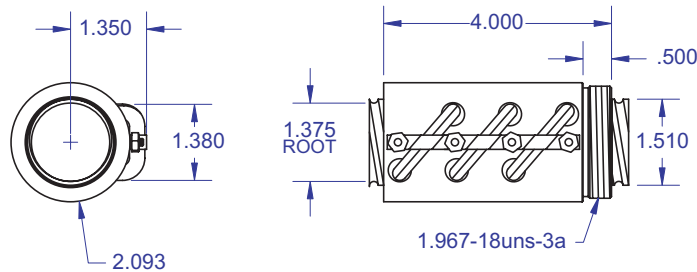
BALL SCREWS

R54A



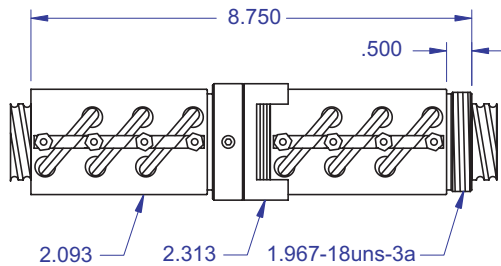
1.500 x .250
DIAMETER LEAD

Standard Ball Screw



Ball bearing nominal diameter 5/32". Average ball quantity per nut is 390.

Preloaded Ball Screw



Standard Ball Screw

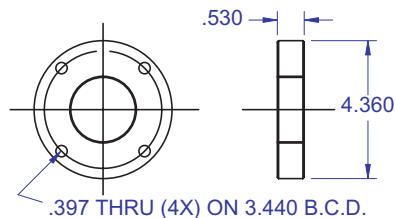
Ball Screw Part #	R-54A-1
Ball Nut Part #	R-54A-2
Dynamic Load (lbs) for 1,000,000 (in)	6,400
Max. Static Load (lbs)	67,200
Ballnut Weight (lbs)	1.64
Ballscrew Weight (lbs/ft)	5.60

Preloaded Ball Screw

Preload Screw Part #	RP-54A-1
Preload Ballnut Part #	RP-54A-2
Dynamic Load (lbs)** for 1,000,000 (in)	5,760
Max. Static Load (lbs)**	66,560
Recommended Preload	640
Maximum Preload	1,920
Ballnut Weight (lbs)	3.28

**Based on recommended Preload.

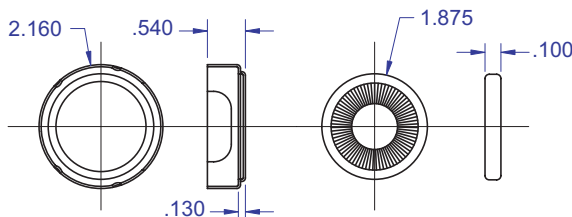
Mounting Flange



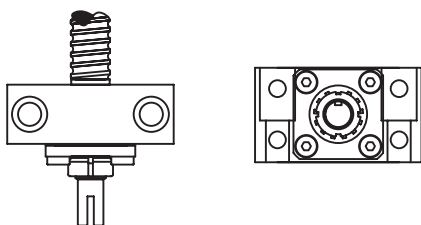
Accessories

Mounting Flange Part #	R-54A-3
Wiper Kit Part #	R-54A-4
Flange Wiper Cap Part#	R-54A-4F

Wiper Kit



Bearing Mount



PLEASE NOTE

Technical drawings and information can vary depending on which Bearing Mount is desired. See pages 80-85 for details.

Technical Info:

Bearing Mounts and Machined Ends	page 80-85
Lubrication information	page 15
On-line Resources (configurable CAD drawings and more)	page 3

WANT MORE PRODUCTS?

Visit our web site at **R/B/S**
www.rockfordballscrew.com. ●/●/●

The specifications and data in this publication are deemed to be accurate and reliable and are subject to change without notice.

1.500 x 1.000
DIAMETER LEAD

BALL SCREWS

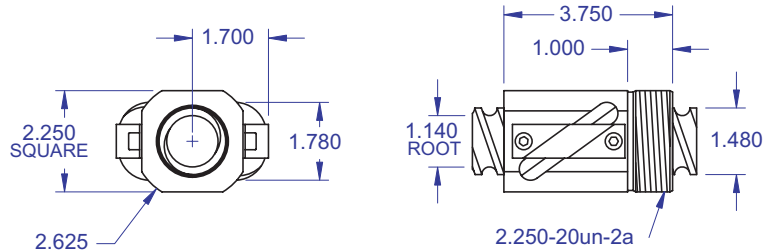
R55/R56



Standard Ball Screw

Ball Screw Part # RH	R-55-1	
Ball Screw Part # LH		R-56-1
Ball Nut Part # RH	R-55-2	
Ball Nut Part # LH		R-56-2
Dynamic Load (lbs) for 1,000,000 (in)	8,000	8,000
Max. Static Load (lbs)	34,500	34,500
Ballnut Weight (lbs)	2.64	2.64
Ballscrew Weight (lbs/ft)	4.52	4.52

Standard Ball Screw



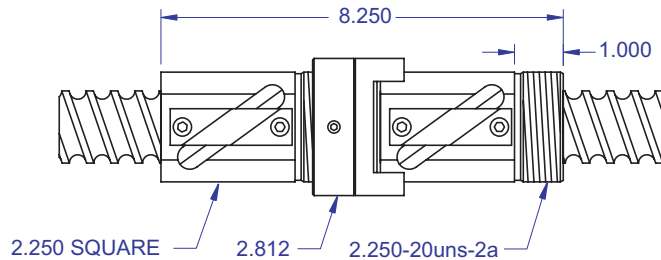
Ball bearing nominal diameter 11/32". Average ball quantity per nut is 64.

Preloaded Ball Screw

Preload Screw Part #	RP-55-1	
Preload Screw Part #		RP-56-1
Preload Ballnut Part #	RP-55-2	
Preload Ballnut Part #		RP-56-2
Dynamic Load (lbs)** for 1,000,000 (in)	7,200	7,200
Max. Static Load (lbs)**	33,700	33,700
Recommended Preload	800	800
Maximum Preload	2,400	2,400
Ballnut Weight (lbs)	5.28	5.28

**Based on recommended Preload.

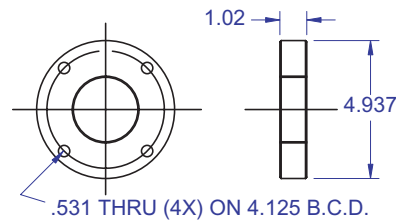
Preloaded Ball Screw



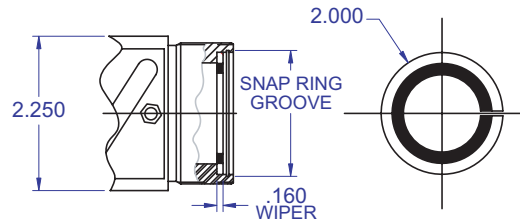
Accessories

Mounting Flange Part #	R-55-3	R-56-3
Wiper Kit Part #	R-55-4	R-56-4
Flange Wiper Cap Part#	R-20-4F	R-21-4F

Mounting Flange



(2 wipers & 2 snap rings) Wiper Kit



Technical Info:

Bearing Mounts and Machined Ends page 80-85
Lubrication information page 15
On-line Resources page 3
(configurable CAD drawings and more)

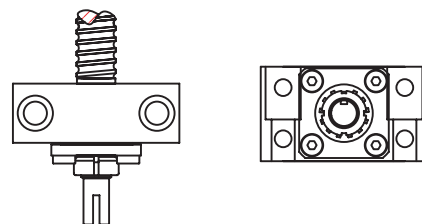
Bearing Mount

WANT MORE PRODUCTS?

R/B/S Visit our web site at
www.rockfordballscrew.com.

The specifications and data in this publication are deemed to be accurate and reliable and are subject to change without notice.

PLEASE NOTE
Technical drawings and information can vary depending on which Bearing Mount is desired. See pages 80-85 for details.

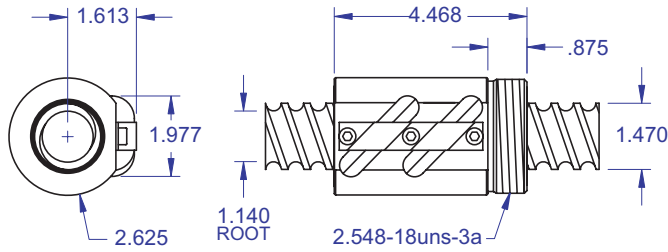


BALL SCREWS

R57

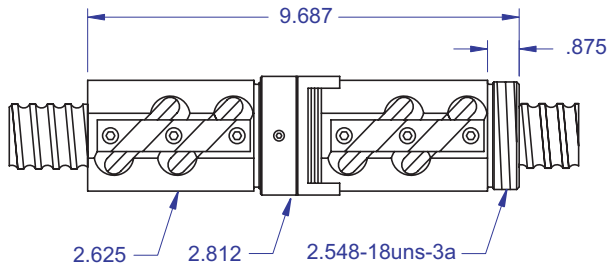


Standard Ball Screw

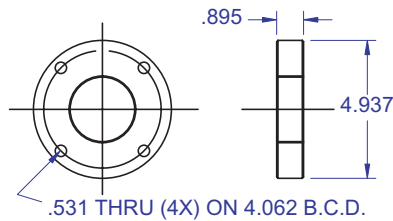


Ball bearing nominal diameter 11/32". Average ball quantity per nut is 86.

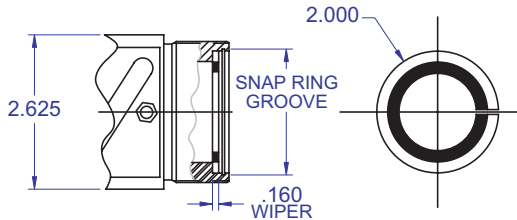
Preloaded Ball Screw



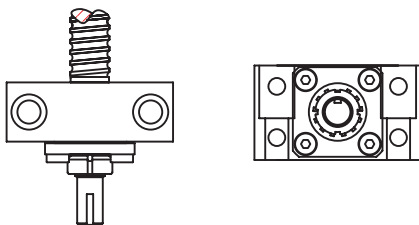
Mounting Flange



Wiper Kit



Bearing Mount



PLEASE NOTE

Technical drawings and information can vary depending on which Bearing Mount is desired. See pages 80-85 for details.

1.500 x .4737

DIAMETER

LEAD

Standard Ball Screw

Ball Screw Part #	R-57-1
Ball Nut Part #	R-57-2
Dynamic Load (lbs) for 1,000,000 (in)	10,050
Max. Static Load (lbs)	57,700
Ballnut Weight (lbs)	3.80
Ball screw Weight (lbs/ft)	4.56

Preloaded Ball Screw

Preload Screw Part #	RP-57-1
Preload Ballnut Part #	RP-57-2
Dynamic Load (lbs)** for 1,000,000 (in)	7,200
Max. Static Load (lbs)**	33,700
Recommended Preload	800
Maximum Preload	2,400
Ballnut Weight (lbs)	5.28

**Based on recommended Preload.

Accessories

Mounting Flange Part #	R-57-3
Wiper Kit Part #	R-57-4

Technical Info:

Bearing Mounts and Machined Ends	page 80-85
Lubrication information	page 15
On-line Resources (configurable CAD drawings and more)	page 3

WANT MORE PRODUCTS?

Visit our web site at **R/B/S**
www.rockfordballscrew.com. ●/●/●

The specifications and data in this publication are deemed to be accurate and reliable and are subject to change without notice.

1.500 x 1.875
DIAMETER LEAD

BALL SCREWS

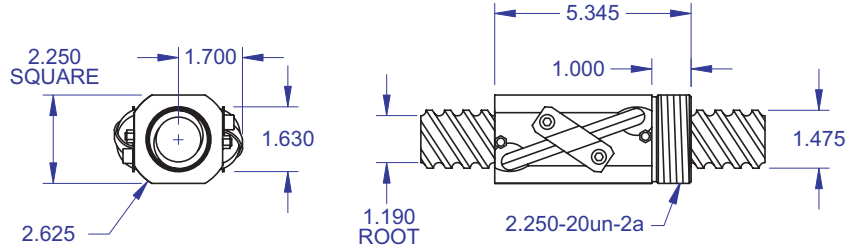


R58

Standard Ball Screw

Ball Screw Part #	R-58-1
Ball Nut Part #	R-58-2
Dynamic Load (lbs) for 1,000,000 (in)	7,350
Max. Static Load (lbs)	30,000
Ballnut Weight (lbs)	3.90
Ballscrew Weight (lbs/ft)	4.83

Standard Ball Screw

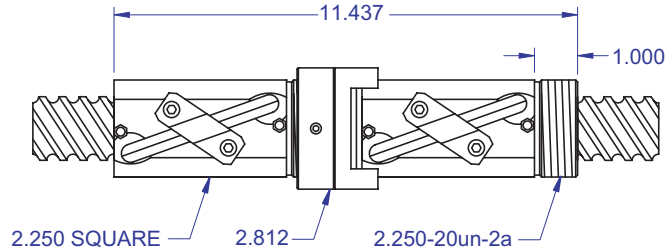


Ball bearing nominal diameter 9/32". Average ball quantity per nut is 90.

Preloaded Ball Screw

Preload Screw Part #	RP-58-1
Preload Ballnut Part #	RP-58-2
Dynamic Load (lbs)** for 1,000,000 (in)	6,615
Max. Static Load (lbs)**	29,265
Recommended Preload	735
Maximum Preload	2,205
Ballnut Weight (lbs)	7.80

Preloaded Ball Screw

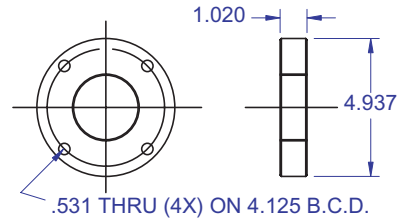


**Based on recommended Preload.

Accessories

Mounting Flange Part #	R-58-3
Wiper Kit Part #	R-58-4

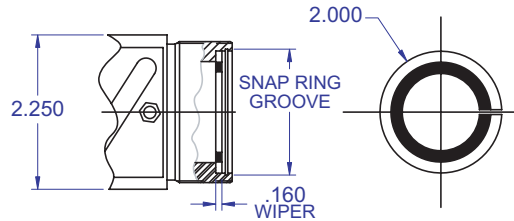
Mounting Flange



Technical Info:

Bearing Mounts and Machined Ends	page 80-85
Lubrication information	page 15
On-line Resources (configurable CAD drawings and more)	page 3

Wiper Kit

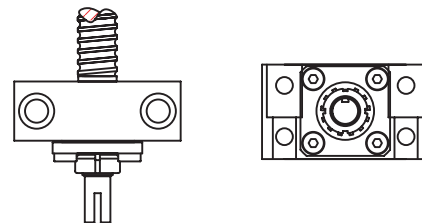


WANT MORE PRODUCTS?

R/B/S Visit our web site at www.rockfordballscrew.com.

The specifications and data in this publication are deemed to be accurate and reliable and are subject to change without notice.

PLEASE NOTE
Technical drawings and information can vary depending on which Bearing Mount is desired. See pages 80-85 for details.



Bearing Mount

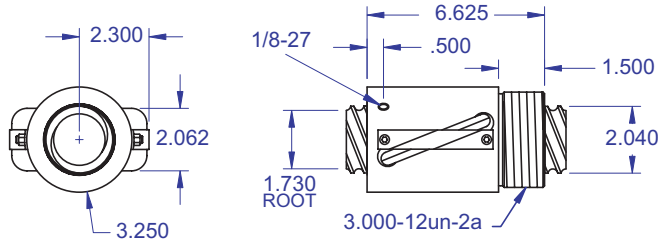
BALL SCREWS

R61



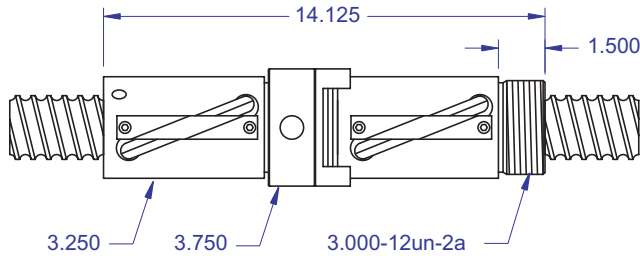
2.000 x 1.000
DIAMETER LEAD

Standard Ball Screw



Ball bearing nominal diameter 3/8". Average ball quantity per nut is 160.

Preloaded Ball Screw



Standard Ball Screw

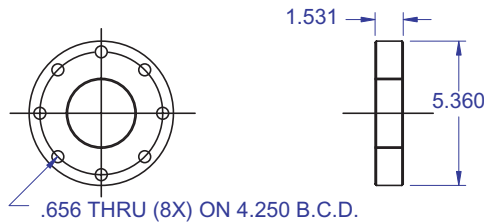
Ball Screw Part #	R-61-1
Ball Nut Part #	R-61-2
Dynamic Load (lbs) for 1,000,000 (in)	22,500
Max. Static Load (lbs)	130,000
Ballnut Weight (lbs)	7.90
Ballscrew Weight (lbs/ft)	9.30

Preloaded Ball Screw

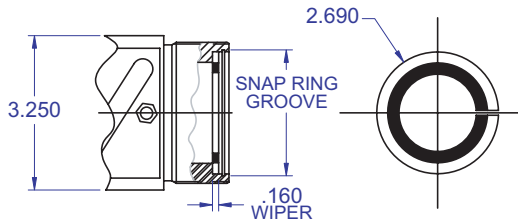
Preload Screw Part #	RP-61-1
Preload Ballnut Part #	RP-61-2
Dynamic Load (lbs)** for 1,000,000 (in)	20,250
Max. Static Load (lbs)**	127,750
Recommended Preload	2,250
Maximum Preload	6,750
Ballnut Weight (lbs)	15.8

**Based on recommended Preload.

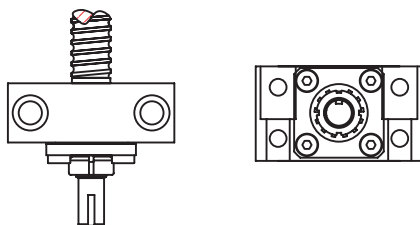
Mounting Flange



Wiper Kit



Bearing Mount



PLEASE NOTE

Technical drawings and information can vary depending on which Bearing Mount is desired. See pages 80-85 for details.

Accessories

Mounting Flange Part #	R-61-3
Wiper Kit Part #	R-61-4

Technical Info:

Bearing Mounts and Machined Ends	page 80-85
Lubrication information	page 15
On-line Resources (configurable CAD drawings and more)	page 3

WANT MORE PRODUCTS?

Visit our web site at **R/B/S**
www.rockfordballscrew.com. ●/●/●

The specifications and data in this publication are deemed to be accurate and reliable and are subject to change without notice.

2.000 x .500
DIAMETER LEAD

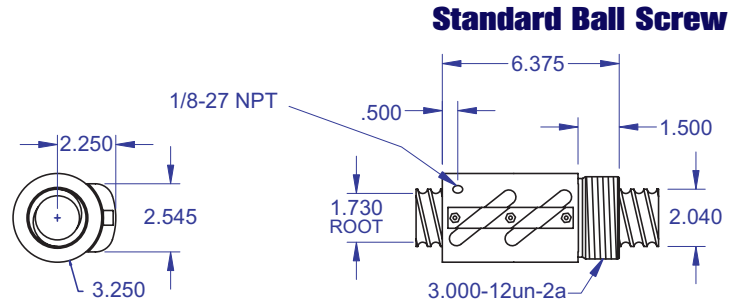
BALL SCREWS

R62



Standard Ball Screw

Ball Screw Part #	R-62-1
Ball Nut Part #	R-62-2
Dynamic Load (lbs) for 1,000,000 (in)	18,000
Max. Static Load (lbs)	130,000
Ballnut Weight (lbs)	8.15
Ballscrew Weight (lbs/ft)	9.36



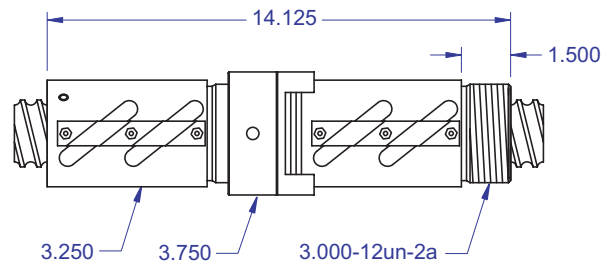
Ball bearing nominal diameter 3/8". Average ball quantity per nut is 152.

Preloaded Ball Screw

Preload Screw Part #	RP-62-1
Preload Ballnut Part #	RP-62-2
Dynamic Load (lbs)** for 1,000,000 (in)	16,200
Max. Static Load (lbs)**	128,200
Recommended Preload	1,800
Maximum Preload	5,400
Ballnut Weight (lbs)	16.30

**Based on recommended Preload.

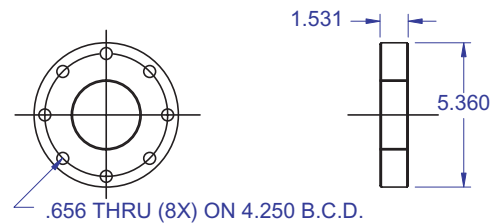
Preloaded Ball Screw



Accessories

Mounting Flange Part #	R-62-3
Wiper Kit Part #	R-62-4

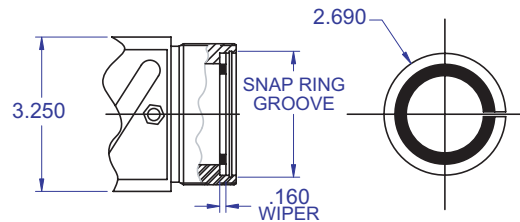
Mounting Flange



Technical Info:

Bearing Mounts and Machined Ends	page 80-85
Lubrication information	page 15
On-line Resources (configurable CAD drawings and more)	page 3

Wiper Kit

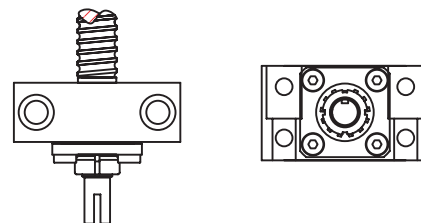


WANT MORE PRODUCTS?

R/B/S Visit our web site at www.rockfordballscrew.com.

The specifications and data in this publication are deemed to be accurate and reliable and are subject to change without notice.

PLEASE NOTE
Technical drawings and information can vary depending on which Bearing Mount is desired. See pages 80-85 for details.

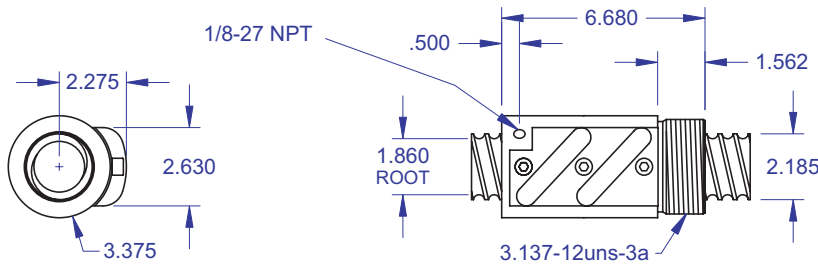


BALL SCREWS

R60/R63

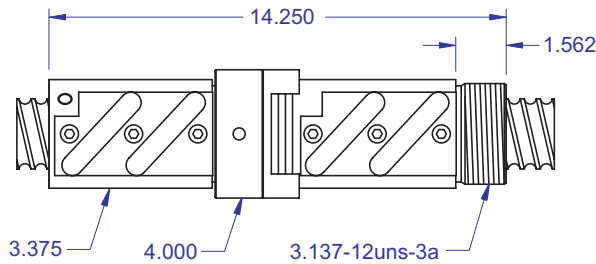


Standard Ball Screw

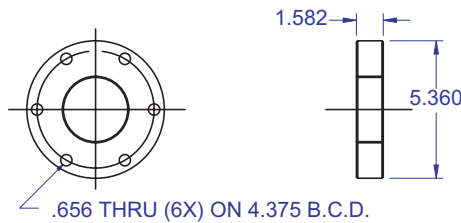


Ball bearing nominal diameter 3/8". Average ball quantity per nut is 154.

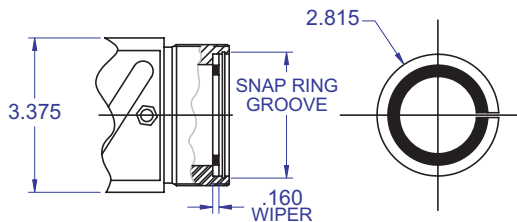
Preloaded Ball Screw



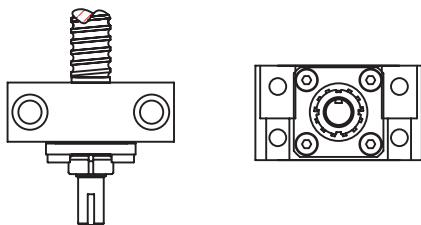
Mounting Flange



Wiper Kit



Bearing Mount



PLEASE NOTE
 Technical drawings and information can vary depending on which Bearing Mount is desired. See pages 80-85 for details.

2.250 x .500
 DIAMETER LEAD

Standard Ball Screw

Ball Screw Part # RH	R-60-1	
Ball Screw Part # LH		R-63-1
Ball Nut Part # RH	R-60-2	
Ball Nut Part # LH		R-63-2
Dynamic Load (lbs) for 1,000,000 (in)	19,800	19,800
Max. Static Load (lbs)	142,500	142,500
Ballnut Weight (lbs)	8.25	8.25
Ballscrew Weight (lbs/ft)	10.92	10.92

Preloaded Ball Screw

Preload Screw Part # RH	RP-60-1	
Preload Screw Part # LH		RP-63-1
Preload Ballnut Part # RH	RP-60-2	
Preload Ballnut Part # LH		RP-63-2
Dynamic Load (lbs)** for 1,000,000 (in)	17,820	17,820
Max. Static Load (lbs)**	140,520	140,520
Recommended Preload	1,980	1,980
Maximum Preload	5,940	5,940
Ballnut Weight (lbs)	16.50	16.50

**Based on recommended Preload.

Accessories

Mounting Flange Part #	R-60-3	R-63-3
Wiper Kit Part #	R-60-4	R-63-4

Technical Info:

Bearing Mounts and Machined Ends	page 80-85
Lubrication information	page 15
On-line Resources (configurable CAD drawings and more)	page 3

WANT MORE PRODUCTS?

Visit our web site at **R/B/S**
www.rockfordballscrew.com

The specifications and data in this publication are deemed to be accurate and reliable and are subject to change without notice.

2.250 x .500
DIAMETER LEAD

BALL SCREWS

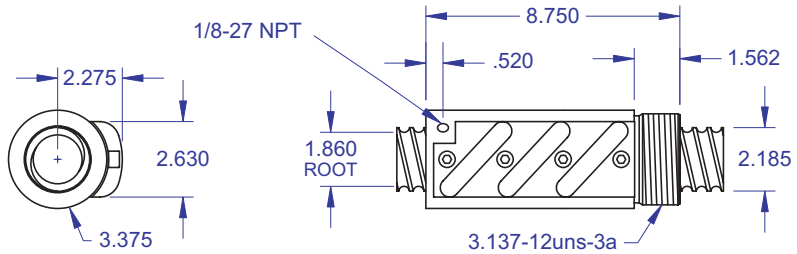


R60A

Standard Ball Screw

Ball Screw Part #	R-60A-1
Ball Nut Part #	R-60A-2
Dynamic Load (lbs) for 1,000,000 (in)	29,700
Max. Static Load (lbs)	213,000
Ballnut Weight (lbs)	11.22
Ballscrew Weight (lbs/ft)	11.30

Standard Ball Screw

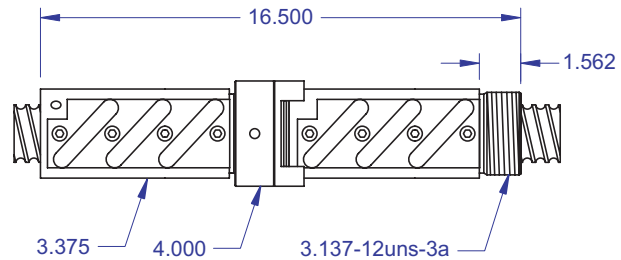


Ball bearing nominal diameter 3/8". Average ball quantity per nut is 237.

Preloaded Ball Screw

Preload Screw Part #	RP-60A-1
Preload Ballnut Part #	RP-60A-2
Dynamic Load (lbs)** for 1,000,000 (in)	26,730
Max. Static Load (lbs)**	210,030
Recommended Preload	2,970
Maximum Preload	8,910
Ballnut Weight (lbs)	22.60

Preloaded Ball Screw

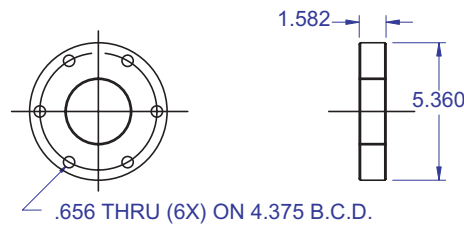


**Based on recommended Preload.

Accessories

Mounting Flange Part #	R-60A-3
Wiper Kit Part #	R-60A-4

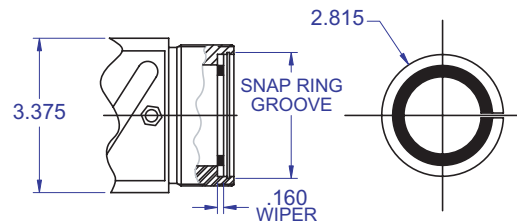
Mounting Flange



Technical Info:

Bearing Mounts and Machined Ends	page 80-85
Lubrication information	page 15
On-line Resources (configurable CAD drawings and more)	page 3

Wiper Kit

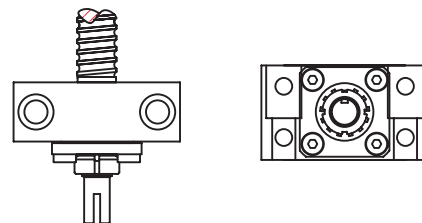


WANT MORE PRODUCTS?

R/S Visit our web site at www.rockfordballscrew.com.

The specifications and data in this publication are deemed to be accurate and reliable and are subject to change without notice.

PLEASE NOTE
Technical drawings and information can vary depending on which Bearing Mount is desired. See pages 80-85 for details.

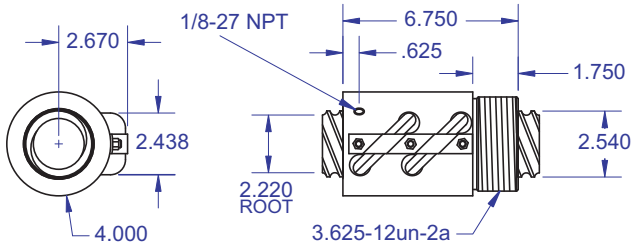


BALL SCREWS

R70

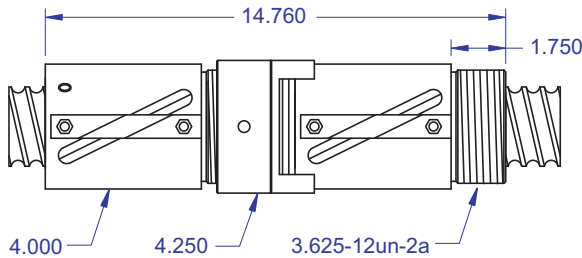


Standard Ball Screw

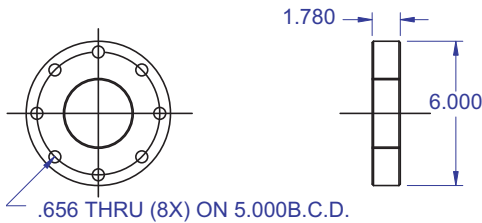


Ball bearing nominal diameter 3/8". Average ball quantity per nut is 186.

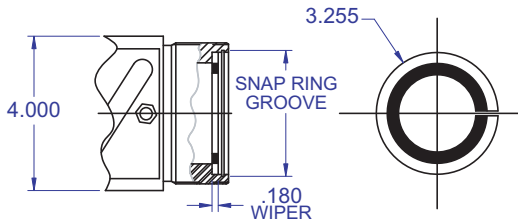
Preloaded Ball Screw



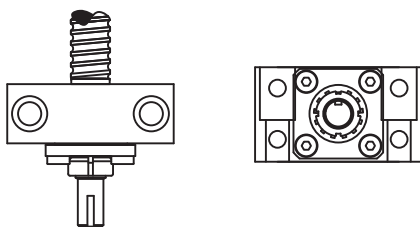
Mounting Flange



Wiper Kit



Bearing Mount



PLEASE NOTE
 Technical drawings and information can vary depending on which Bearing Mount is desired. See pages 80-85 for details.

2.500 x .500
 DIAMETER LEAD

Standard Ball Screw

Ball Screw Part #	R-70-1
Ball Nut Part #	R-70-2
Dynamic Load (lbs) for 1,000,000	22,000
Max. Static Load (lbf)	155,500
Ballnut Weight (lbs)	12.09
Ballscrew Weight (lbs/ft)	14.98

Preloaded Ball Screw

Preload Screw Part #	RP-70-1
Preload Ballnut Part #	RP-70-2
Dynamic Load (lbs)* for 1,000,000 (in)	19,800
Max. Static Load (lbs)	152,800
Recommended Preload	2,200
Maximum Preload	6,600
Ballnut Weight (lbs)	24.18

**Based on recommended Preload.

Accessories

Mounting Flange Part #	R-70-3
Wiper Kit Part #	R-70-4

Technical Info:

Bearing Mounts and Machined Ends	page 80-85
Lubrication information	page 15
On-line Resources (configurable CAD drawings and more)	page 3

WANT MORE PRODUCTS?

Visit our web site at **R/B/S**
www.rockfordballscrew.com

The specifications and data in this publication are deemed to be accurate and reliable and are subject to change without notice.

2.500 x 1.000
DIAMETER LEAD

BALL SCREWS

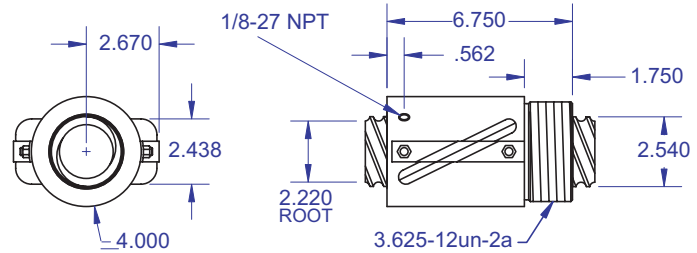


R71

Standard Ball Screw

Ball Screw Part #	R-71-1
Ball Nut Part #	R-71-2
Dynamic Load (lbs) for 1,000,000 (in)	26,500
Max. Static Load (lbs)	155,000
Ballnut Weight (lbs)	12.26
Ballscrew Weight (lbs/ft)	14.95

Standard Ball Screw

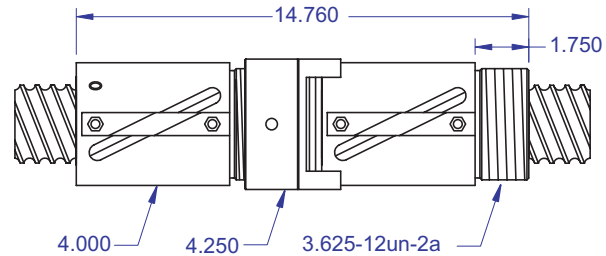


Ball bearing nominal diameter 3/8". Average ball quantity per nut is 194.

Preloaded Ball Screw

Preload Screw Part #	RP-71-1
Preload Ballnut Part #	RP-71-2
Dynamic Load (lbs)** for 1,000,000 (in)	23,850
Max. Static Load (lbs)**	152,350
Recommended Preload	2,650
Maximum Preload	7,950
Ballnut Weight (lbs)	24.52

Preloaded Ball Screw

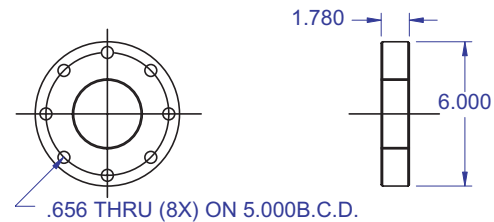


**Based on recommended Preload.

Accessories

Mounting Flange Part #	R-71-3
Wiper Kit Part #	R-71-4

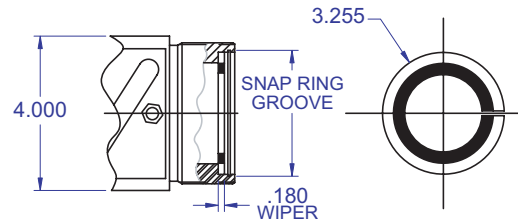
Mounting Flange



Technical Info:

Bearing Mounts and Machined Ends	page 80-85
Lubrication information	page 15
On-line Resources (configurable CAD drawings and more)	page 3

Wiper Kit



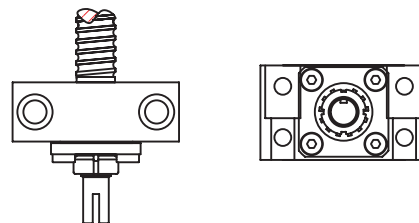
WANT MORE PRODUCTS?

R/B/S Visit our web site at www.rockfordballscrew.com.

The specifications and data in this publication are deemed to be accurate and reliable and are subject to change without notice.

PLEASE NOTE

Technical drawings and information can vary depending on which Bearing Mount is desired. See pages 80-85 for details.



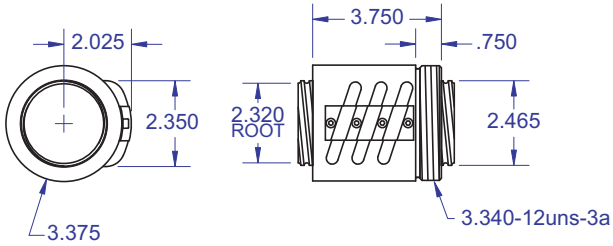
BALL SCREWS

R74



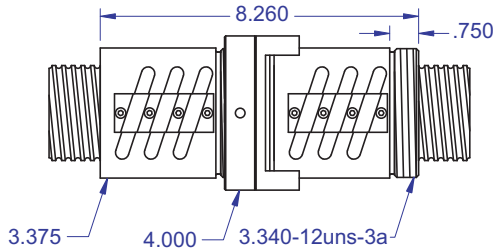
2.500 x .250
DIAMETER LEAD

Standard Ball Screw



Ball bearing nominal diameter 5/32". Average ball quantity per nut is 477.

Preloaded Ball Screw



Standard Ball Screw

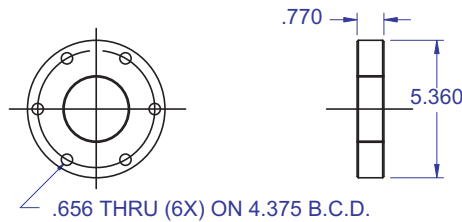
Ball Screw Part #	R-74-1
Ball Nut Part #	R-74-2
Dynamic Load (lbs) for 1,000,000 (in)	6,300
Max. Static Load (lbs)	78,800
Ballnut Weight (lbs)	3.91
Ballscrew Weight (lbs/ft)	15.50

Preloaded Ball Screw

Preload Screw Part #	RP-74-1
Preload Ballnut Part #	RP-74-2
Dynamic Load (lbs)** for 1,000,000 (in)	5,670
Max. Static Load (lbs)**	77,370
Recommended Preload	630
Maximum Preload	1,890
Ballnut Weight (lbs)	7.82

**Based on recommended Preload.

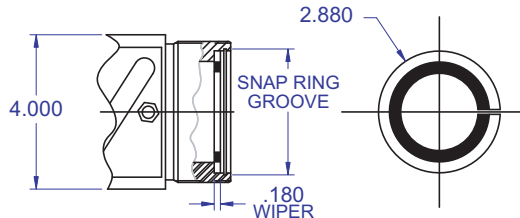
Mounting Flange



Accessories

Mounting Flange Part #	R-74-3
Wiper Kit Part #	R-74-4

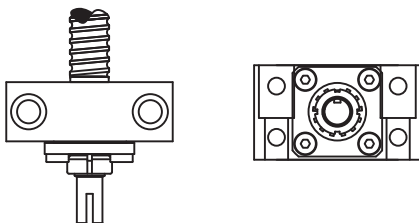
Wiper Kit



Technical Info:

Bearing Mounts and Machined Ends	page 80-85
Lubrication information	page 15
On-line Resources (configurable CAD drawings and more)	page 3

Bearing Mount



PLEASE NOTE

Technical drawings and information can vary depending on which Bearing Mount is desired. See pages 80-85 for details.

WANT MORE PRODUCTS?

Visit our web site at **R/B/S**
www.rockfordballscrew.com. ●/●/●

The specifications and data in this publication are deemed to be accurate and reliable and are subject to change without notice.

2.500 x 1.500
DIAMETER LEAD

BALL SCREWS

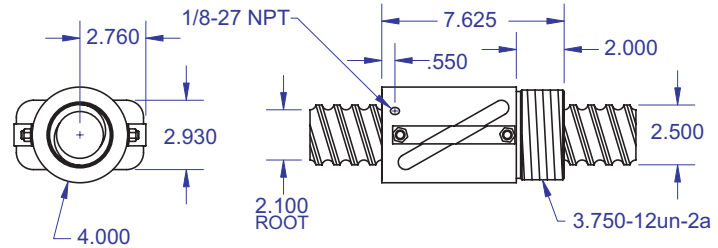
R75



Standard Ball Screw

Ball Screw Part #	R-75-1
Ball Nut Part #	R-75-2
Dynamic Load (lbs) for 1,000,000 (in)	32,500
Max. Static Load (lbs)	175,000
Ballnut Weight (lbs)	14.40
Ballscrew Weight (lbs/ft)	14.93

Standard Ball Screw

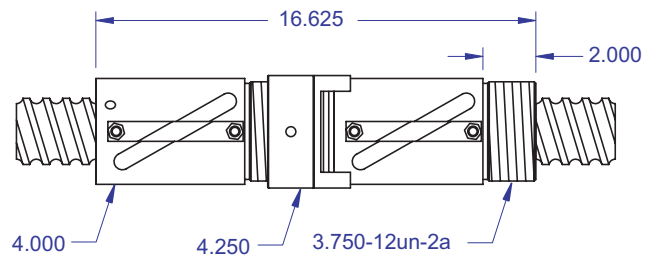


Ball bearing nominal diameter 1/2". Average ball quantity per nut is 112.

Preloaded Ball Screw

Preload Screw Part #	RP-75-1
Preload Ballnut Part #	RP-75-2
Dynamic Load (lbs)** for 1,000,000 (in)	29,250
Max. Static Load (lbs)**	171,750
Recommended Preload	3,250
Maximum Preload	9,750
Ballnut Weight (lbs)	28.80

Preloaded Ball Screw

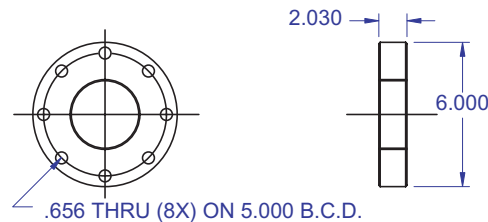


**Based on recommended Preload.

Accessories

Mounting Flange Part #	R-75-3
Wiper Kit Part #	R-75-4

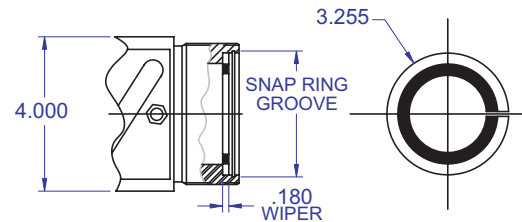
Mounting Flange



Technical Info:

Bearing Mounts and Machined Ends	page 80-85
Lubrication information	page 15
On-line Resources (configurable CAD drawings and more)	page 3

Wiper Kit

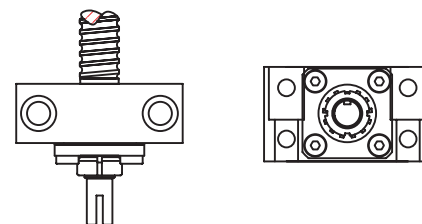


WANT MORE PRODUCTS?

R/B/S Visit our web site at www.rockfordballscrew.com.

The specifications and data in this publication are deemed to be accurate and reliable and are subject to change without notice.

PLEASE NOTE
Technical drawings and information can vary depending on which Bearing Mount is desired. See pages 80-85 for details.



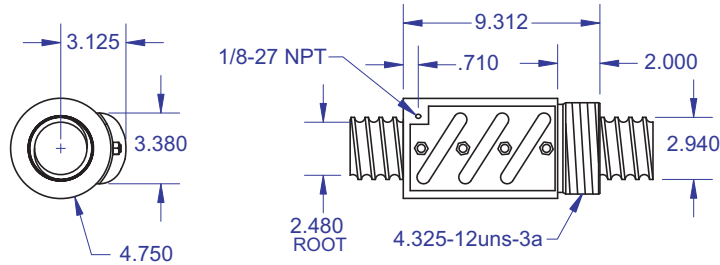
BALL SCREWS

R80



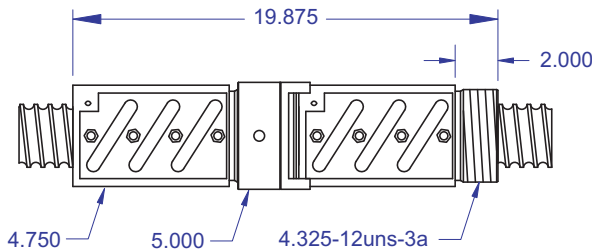
3.000 x **.660**
DIAMETER LEAD

Standard Ball Screw

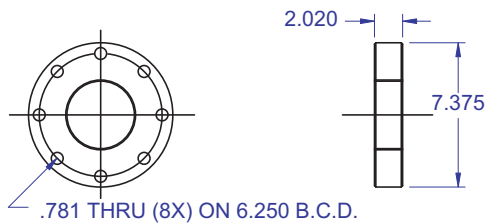


Ball bearing nominal diameter 1/2". Average ball quantity per nut is 177.

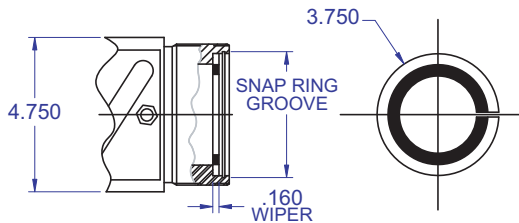
Preloaded Ball Screw



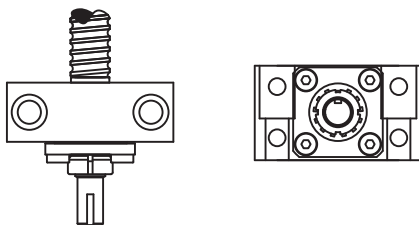
Mounting Flange



Wiper Kit



Bearing Mount



PLEASE NOTE

Technical drawings and information can vary depending on which Bearing Mount is desired. See pages 80-85 for details.

Standard Ball Screw

Ball Screw Part #	R-80-1
Ball Nut Part #	R-80-2
Dynamic Load (lbs) for 1,000,000 (in)	42,000
Max. Static Load (lbs)	260,000
Ballnut Weight (lbs)	25.02
Ballscrew Weight (lbs/ft)	19.43

Preloaded Ball Screw

Preload Screw Part #	RP-80-1
Preload Ballnut Part #	RP-80-2
Dynamic Load (lbs)** for 1,000,000 (in)	37,800
Max. Static Load (lbs)**	255,800
Recommended Preload	4,200
Maximum Preload	12,600
Ballnut Weight (lbs)	50.04

*Based on recommended Preload.

Accessories

Mounting Flange Part #	R-80-3
Wiper Kit Part #	R-80-4

Technical Info:

Bearing Mounts and Machined Ends	page 80-85
Lubrication information	page 15
On-line Resources (configurable CAD drawings and more)	page 3

WANT MORE PRODUCTS?

Visit our web site at **R/B/S**
www.rockfordballscrew.com. ●/●/●

The specifications and data in this publication are deemed to be accurate and reliable and are subject to change without notice.

4.000 x 1.000
DIAMETER LEAD

BALL SCREWS

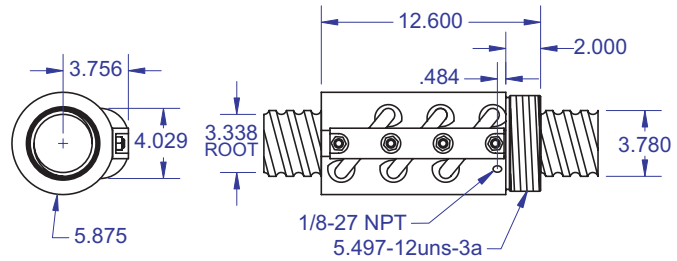
R90/R91



Standard Ball Screw

Ball Screw Part # RH	R-90-1	
Ball Screw Part # LH		R-91-1
Ball Nut Part # RH	R-90-2	
Ball Nut Part # LH		R-91-2
Dynamic Load (lbs) for 1,000,000 (in)	85,000	85,000
Max. Static Load (lbs)	476,950	476,950
Ballnut Weight (lbs)	41.07	41.07
Ballscrew Weight (lbs/ft)	31.90	31.90

Standard Ball Screw

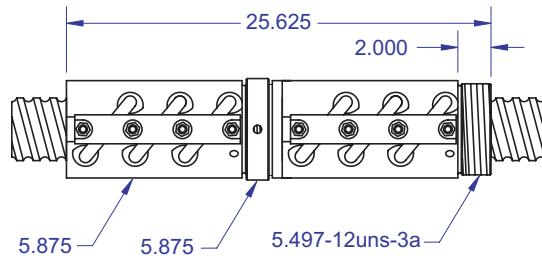


Ball bearing nominal diameter 5/8". Average ball quantity per nut is 186.

Preloaded Ball Screw

Preload Screw Part # RH	RP-90-1	
Preload Screw Part # LH		RP-91-1
Preload Ballnut Part # RH	RP-90-2	
Preload Ballnut Part # LH		RP-91-2
Dynamic Load (lbs)** for 1,000,000 (in)	76,500	76,500
Max. Static Load (lbs)**	468,450	468,450
Recommended Preload	8,500	8,500
Maximum Preload	25,500	25,500
Ballnut Weight (lbs)	82.14	82.14

Preloaded Ball Screw

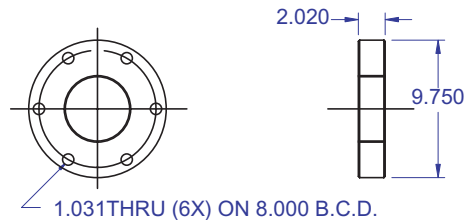


**Based on recommended Preload.

Accessories

Mounting Flange Part #	R-90-3	R-91-3
Wiper Kit Part #	R-90-4	R-91-4

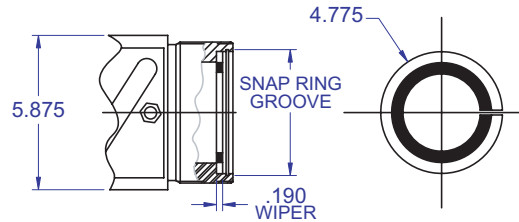
Mounting Flange



Technical Info:

Bearing Mounts and Machined Ends page 80-85
 Lubrication information page 15
 On-line Resources page 3
 (configurable CAD drawings and more)

Wiper Kit



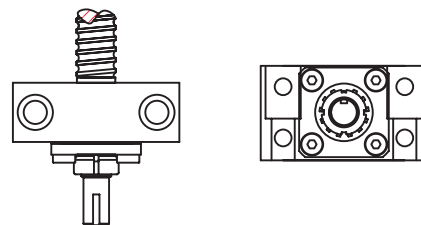
WANT MORE PRODUCTS?

R/B/S Visit our web site at www.rockfordballscrew.com.

The specifications and data in this publication are deemed to be accurate and reliable and are subject to change without notice.

PLEASE NOTE

Technical drawings and information can vary depending on which Bearing Mount is desired. See pages 80-85 for details.

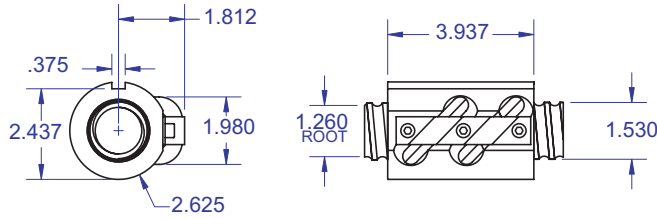


BALL SCREWS

KEYWAYS

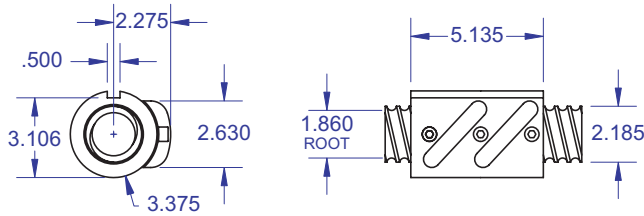


R50 Keyway Ball Screw



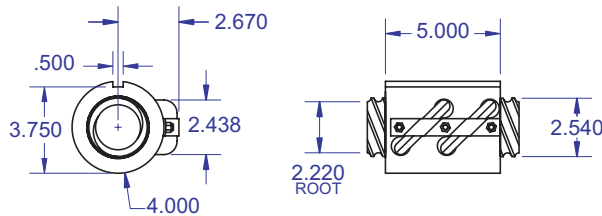
Ball bearing nominal diameter 5/16". Average ball quantity per nut is 102.

R60 Keyway Ball Screw



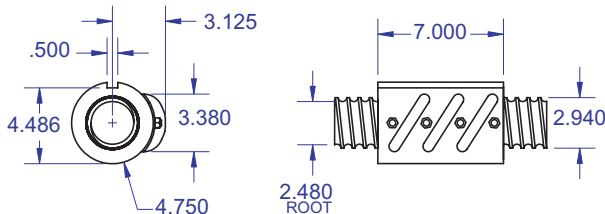
Ball bearing nominal diameter 3/8". Average ball quantity per nut is 154.

R70 Keyway Ball Screw



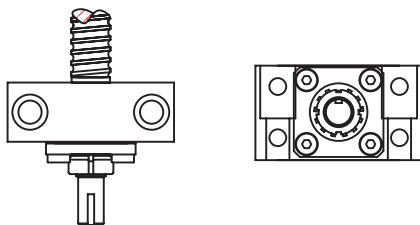
Ball bearing nominal diameter 3/8". Average ball quantity per nut is 186.

R80 Keyway Ball Screw



Ball bearing nominal diameter 1/2". Average ball quantity per nut is 177.

Bearing Mount



PLEASE NOTE

Technical drawings and information can vary depending on which Bearing Mount is desired. See pages 80-85 for details.

Keyway Nuts

R50 Keyway Ball Screw

Ball Screw Part #	R-50-1
Ball Nut Part #	R-50-2KW
Dynamic Load (lbs) for 1,000,000 (in)	9,050
Max. Static Load (lbs)	55,000
Ballnut Weight (lbs)	4.18
Ballscrew Weight (lbs/ft)	5.34

R60 Keyway Ball Screw

Ball Screw Part # RH	R-60-1
Ball Nut Part # RH	R-60-2KW
Dynamic Load (lbs) for 1,000,000 (in)	19,800
Max. Static Load (lbs)	142,500
Ballnut Weight (lbs)	8.25
Ballscrew Weight (lbs/ft)	10.92

R70 Keyway Ball Screw

Ball Screw Part #	R-70-1
Ball Nut Part #	R-70-2KW
Dynamic Load (lbs) for 1,000,000	22,000
Max. Static Load (lbf)	155,500
Ballnut Weight (lbs)	12.09
Ballscrew Weight (lbs/ft)	14.98

R80 Keyway Ball Screw

Ball Screw Part #	R-80-1
Ball Nut Part #	R-80-2KW
Dynamic Load (lbs) for 1,000,000 (in)	42,000
Max. Static Load (lbs)	260,000
Ballnut Weight (lbs)	25.02
Ballscrew Weight (lbs/ft)	19.43

WANT MORE PRODUCTS?

Visit our web site at **R/B/S**
www.rockfordballscrew.com. ●/●/●

The specifications and data in this publication are deemed to be accurate and reliable and are subject to change without notice.

5/8 x .188
 DIAMETER EFFECTIVE LEAD

FREEWHEELING

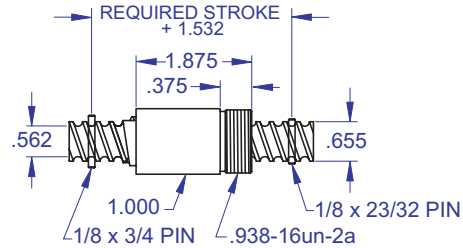


R1

Freewheeling Ball Screw

Ball Screw Part #	R01-1
Ball Nut Part #	R01-2
Dynamic Load (lbs) for 1,000,000 (in)	300

R1 Freewheeling Ball Screw

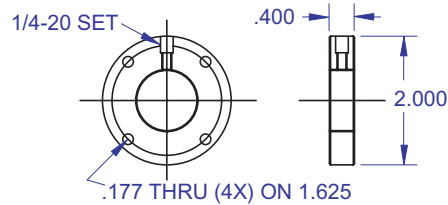


Ball bearing nominal diameter 1/8". Ball quantity per nut is 12.

Accessories

Mounting Flange Part #	R01-3
Bearing Mount Part #	see pages 80-85

R1 Mounting Flange



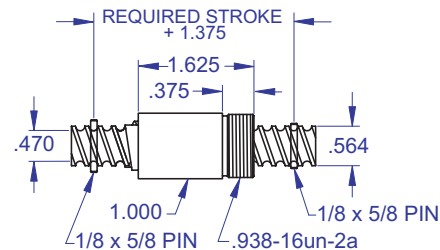
9/16 x .200
 DIAMETER EFFECTIVE LEAD

Freewheeling Ball Screw

Ball Screw Part #	R02-1
Ball Nut Part #	R02-2
Dynamic Load (lbs) for 1,000,000 (in)	150

R2

R2 Freewheeling Ball Screw

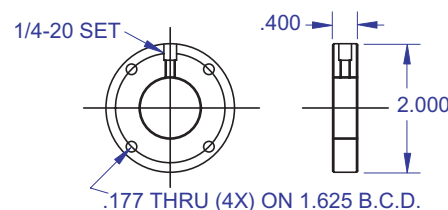


Ball bearing nominal diameter 1/8". Ball quantity per nut is 6.

Accessories

Mounting Flange Part #	R02-3
Bearing Mount Part #	see pages 80-85

R2 Mounting Flange



WANT MORE PRODUCTS?

R/B/S Visit our web site at
www.rockfordballscrew.com

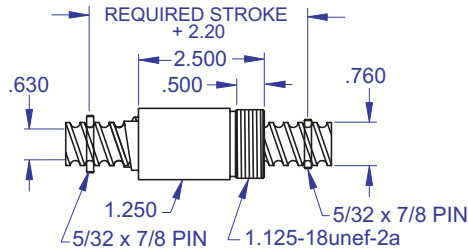
The specifications and data in this publication are deemed to be accurate and reliable and are subject to change without notice.

FREEWHEELING



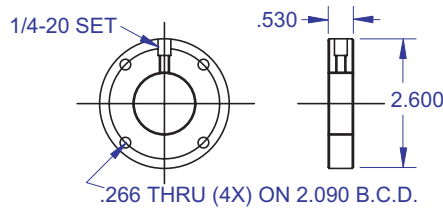
R4

R4 Freewheeling Ball Screw



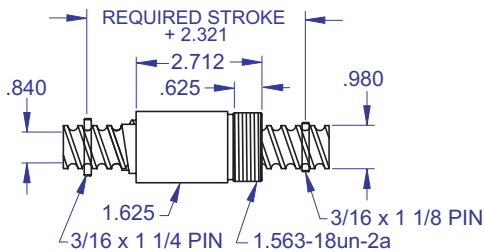
Ball bearing nominal diameter 5/32". Ball quantity per nut is 12.

R4 Mounting Flange



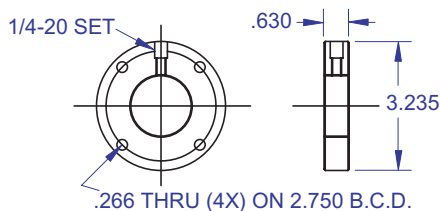
R6

R6 Freewheeling Ball Screw



Ball bearing nominal diameter 3/16". Ball quantity per nut is 12.

R6 Mounting Flange



3/4 x .200
DIAMETER EFFECTIVE LEAD

Freewheeling Ball Screw

Ball Screw Part #	R04-1
Ball Nut Part #	R04-2
Dynamic Load (lbs) for 1,000,000 (in)	450

Accessories

Mounting Flange Part #	R04-3
Bearing Mount Part #	see pages 80-85

1.00 x .200
DIAMETER EFFECTIVE LEAD

Freewheeling Ball Screw

Ball Screw Part #	R06-1
Ball Nut Part #	R06-2
Dynamic Load (lbs) for 1,000,000 (in)	900

Accessories

Mounting Flange Part #	R06-3
Bearing Mount Part #	see pages 80-85

WANT MORE PRODUCTS?

Visit our web site at **R/B/S**
www.rockfordballscrew.com. ●●●

The specifications and data in this publication are deemed to be accurate and reliable and are subject to change without notice.