

# Probe tips

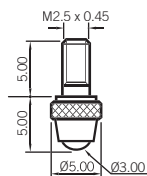
86



1 Type normally fitted to AX Series and tungsten carbide version of feather touch probes

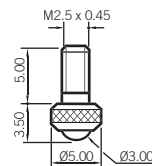
2 Shank of 041676 is narrower and longer than 802605. Tip normally used on linear encoders

3 Type fitted to nylon versions of feather touch probes



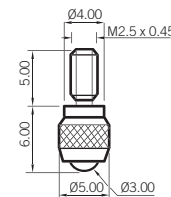
**Ø3.00mm Ball**

Tip material	Part no.
T.Carbide	804979
Ruby	804807
Nylon	805181
Silicon Nitride	804973



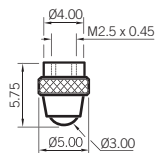
**Ø3.00mm Ball**

Tip material	Part no.
T.Carbide	802605 <sup>1</sup>
Nylon	803246 <sup>3</sup>



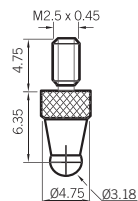
**Ø3.00mm Ball**

Tip material	Part no.
T.Carbide	041676 <sup>2</sup>



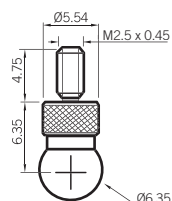
**Ø3.00mm Ball**

Tip material	Part no.
T.Carbide	804967
Ruby	804966
Nylon	804965
Silicon Nitride	805180



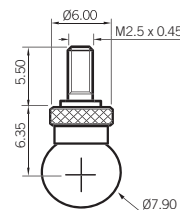
**Ø3.18mm Ball**

Tip material	Part no.
T.Carbide	008305-004



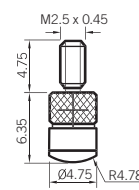
**Ø6.35mm Ball**

Tip material	Part no.
T.Carbide	008305-005



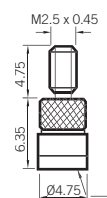
**Ø7.90mm Ball**

Tip material	Part no.
Ruby	804828



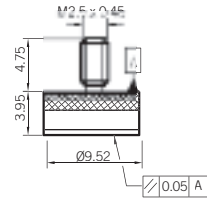
**Ø4.75mm Dome**

Tip material	Part no.
T.Carbide	008305-034



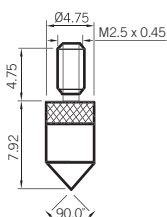
**Ø4.75mm Flat**

Tip material	Part no.
T.Carbide	008305-033



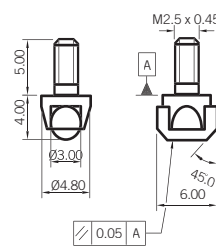
**Ø9.52mm Flat**

Tip material	Part no.
T.Carbide	008305-007



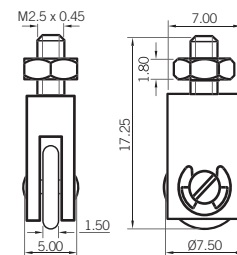
**90° Tip**

Tip material	Part no.
T.Carbide	008305-003



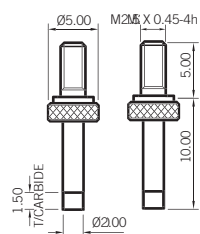
**Ø7.90mm Roller**

Tip material	Part no.
T.Carbide	008305-030



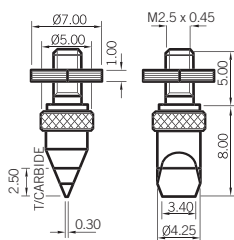
**1.5 x Ø7.50mm Wheel**

Tip material	Part no.
Steel	008305-027



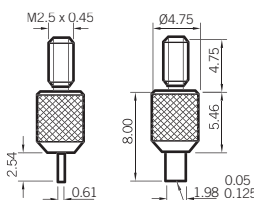
**Ø2.00mm Pin**

Tip material	Part no.
T.Carbide	206675



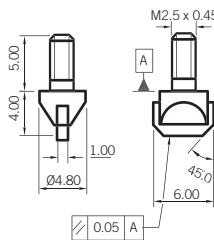
**Knife Edge**

Tip material	Part no.
T.Carbide	206674



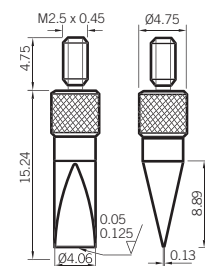
**0.6 x 2mm Blade Edge**

Tip material	Part no.
T.Carbide	008305-035



**1 x 6mm Blade Edge**

Tip material	Part no.
T.Carbide	008305-031



**4 x 11mm Knife Edge**

Tip material	Part no.
T.Carbide	008305-036