



Motion Solutions for Clean Energy Applications

Thomson Is the Choice for Linear Motion.

Thomson linear motion solutions set a worldwide standard for breadth, quality and customizability.

The largest linear actuator range in the market. In addition to our extensive application and engineering expertise, Thomson has the largest, unmatched range of electrical linear actuators, precision linear actuators and screw jacks in the market today. We provide positioning solutions for a vast array of unique applications for dynamic loads up to 11,240 lbf. Thomson understands the critical needs of the clean energy industry and works diligently to provide the most cost-effective solutions available. Our success is driven by:

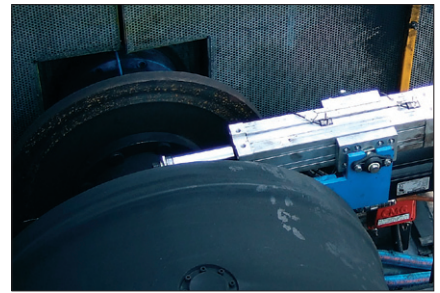
- Decades of application and engineering expertise
- Robust and reliable products that withstand the harshest environments
- An extensive standard and modified product range
- Custom designs for unique applications

Rugged and reliable. Thomson products suitable for applications in the clean energy industry are rugged and reliable, withstand harsh environments and are protected to IP67.

Changing technologies. Manufacturers are taking a long, hard look at the way they use motion control systems in their equipment. Once dominated by pneumatic and hydraulic systems, machines are now more often designed to use electric linear actuators for the automation of many tasks. They are easier to control, integrate with control systems and are smaller, lighter and cleaner than hydraulic systems – all attributes that brighten a company's bottom line. Electric linear actuators or screw jacks eliminate:

- Hydraulic pumps, valves and hoses
- Cost and bulk associated with hydraulic systems
- Environmentally hazardous oil and risk of leakage
- High energy consumption of hydraulic systems
- Costly hydraulic reliability issues (contamination)
- Cost and hassle associated with fluid maintenance

At Thomson, customization is standard. Thomson is the industry leader in custom design. Our design flexibility and unique customization expertise give us an advantage to quickly provide a cost-effective design that meets exact requirements.



SOLAR ENERGY

High energy prices have fueled double-digit growth in the solar energy industry, with continued growth likely in coming years.¹ A key factor in deployment of solar panels is the efficiency of the panels and the amount of energy created from the given surface area of a panel.

Solar panel tracking.

Tracking the movement of the sun will boost the efficiency and increase output from a given panel by up to 30 percent. Accurate, trouble-free positioning of the panels is the challenge. The system must be highly rugged and able to withstand wind and weather. It must function reliably and maintenance-free for many years. Thomson linear actuators and screw jacks offer affordable, custom-fitted solutions to these challenges.

- Solar tracking requires actuation solutions that are stiff and will not back-drive in high wind conditions. All Thomson actuators and screw jacks can be equipped with a holding brake that eliminates back-driving.

- Accurate tracking often requires some form of feedback. Most Thomson actuators and screw jack models can be equipped with encoders, resolvers or potentiometers to meet either analog or digital feedback requirements.
- All Thomson actuators and screw jacks are available with adjustable end-of-stroke limit switches to protect the panel from damage due to overtravel in either direction.
- Panels can require up to 2000 lbf of force to move in windy conditions, which both actuators and screw jacks can deliver with ease.
- Multiple mounting options are available.
- Actuators and screw jacks require little to no maintenance, making them ideal for solar panel applications.

¹ US Energy Information Administration, Solar Thermal and Photovoltaic Collector Manufacturing Activities 2006, published October, 2007.

Customization

Thomson has a long history of building custom products. A custom-tailored solution can be an integrated part of the structure and make assembly quick and easy.

Wind, Rain and Snow

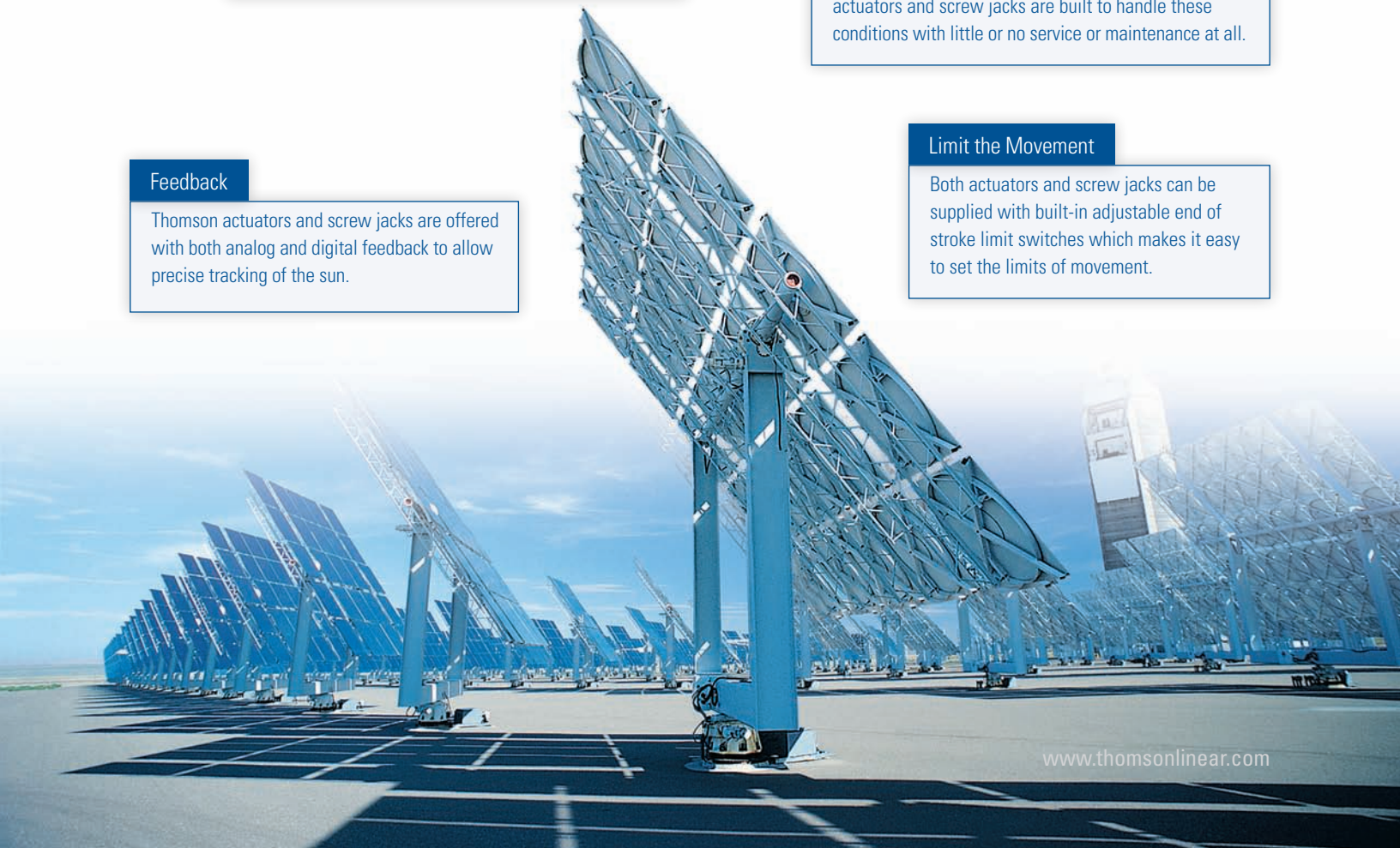
The elements can put stress on a solar panel. Thomson actuators and screw jacks are built to handle these conditions with little or no service or maintenance at all.

Feedback

Thomson actuators and screw jacks are offered with both analog and digital feedback to allow precise tracking of the sun.

Limit the Movement

Both actuators and screw jacks can be supplied with built-in adjustable end of stroke limit switches which makes it easy to set the limits of movement.



WIND ENERGY

The best wind conditions are often found in locations that are remote or hard to reach – at sea, in the middle of a large field and on hilltops. Harsh environments require rugged solutions. Reliability is essential and maintenance must be minimized. Millions of Thomson actuators operate reliably for years without maintenance in the harshest environments.

Hood lifting and parking brakes.

Windmills are built with top hatches to allow maintenance of large components in the turbine house. These hatches are often too heavy to operate manually. The turbine itself also must have a parking brake so that the rotor stays in position for service or when the wind conditions require the mill to stop. Linear actuators or screw jacks are the ideal solution in both cases.

- Actuators and screw jacks are clean compared to hydraulic alternatives. They do not require pumps, pipes, valves and plumbing. There is no risk of oil leakage or need for maintenance.
- Positioning is easy with end-of-stroke limit switches readily available.
- Installation and operation is simple.
- Thomson actuators or screw jacks have a variety of mounting options available, allowing flexible configuration.

Hood Lift

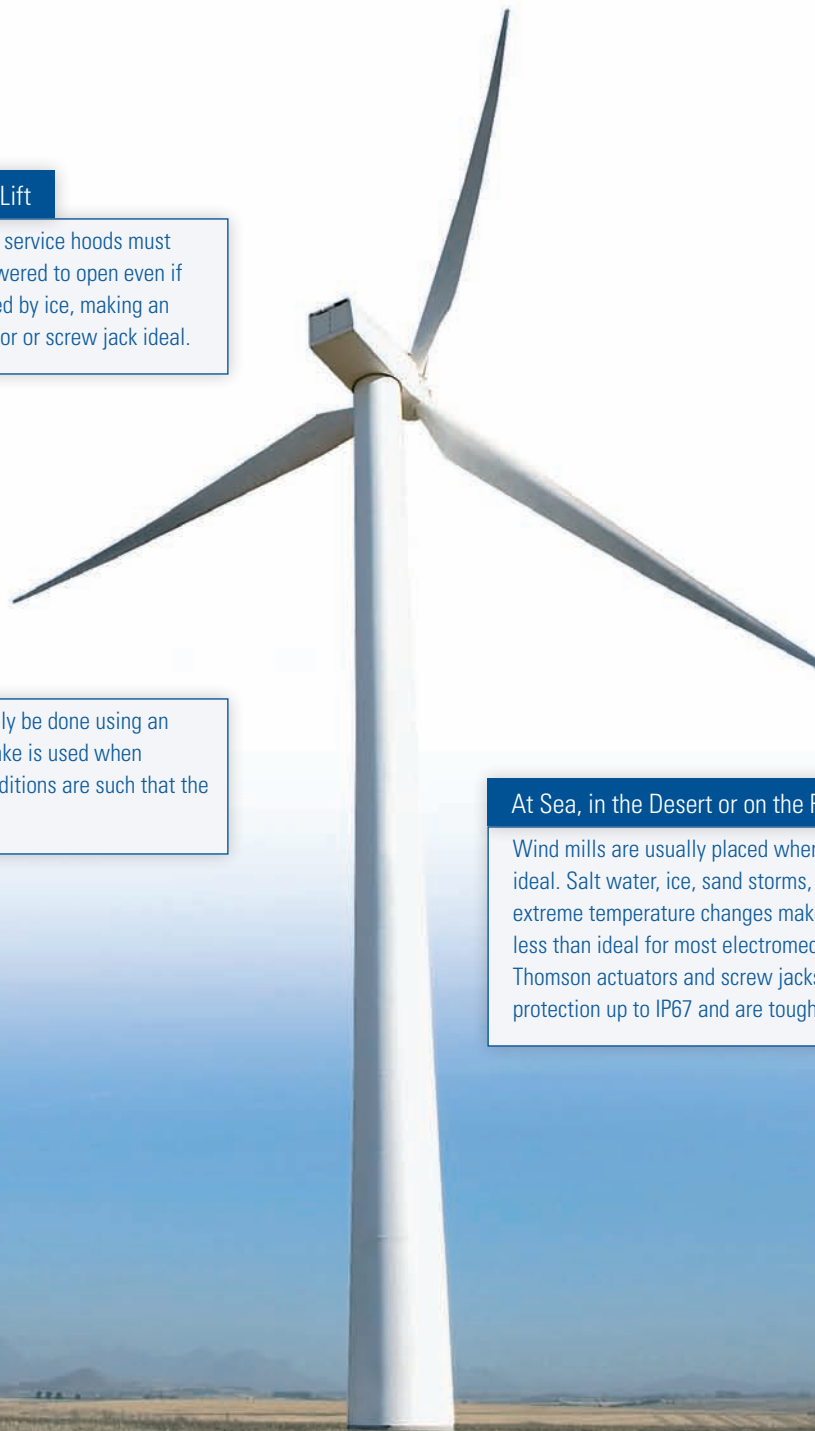
Heavy service hoods must be powered to open even if covered by ice, making an actuator or screw jack ideal.

Rotor Brake

A rotor braking function can easily be done using an actuator or a screw jack. The brake is used when serviced and when the wind conditions are such that the rotor must be parked.

At Sea, in the Desert or on the Plains

Wind mills are usually placed where wind conditions are ideal. Salt water, ice, sand storms, high humidity and extreme temperature changes make the environment less than ideal for most electromechanical components. Thomson actuators and screw jacks are available with protection up to IP67 and are tough enough to do the job.



Thomson Linear Actuators

For over 40 years, the dedicated engineers at Thomson have designed linear actuators to provide performance in some of the most demanding applications – vibration, shock, heat, cold, salt spray, etc. Today Thomson offers an unmatched range of standard and custom electrical linear actuators.



ELECTRAK PPA

- Strong and versatile heavy-duty actuator
- A variety of AC and DC voltage models
- High duty cycle
- Long stroke lengths
- Large range of options
- Trunnion mounting



ELECTRAK 10

- Robust, strong and reliable
- Withstands very harsh environments
- Stainless steel extension tube
- Acme or ball screw models
- A variety of DC voltage models
- Clevis mounting



ELECTRAK LA24

- Robust, strong and reliable
- Withstands very harsh environments
- Aluminium cover tube
- Acme or ball screw models
- A variety of AC voltage models
- Trunnion or clevis mounting



ELECTRAK CEA10

- Specially designed for solar panel applications
- Capable of high loads and long strokes
- Withstands very harsh environments
- Encoder or potentiometer feedback
- Optional limit switches
- Tube mounting



ELECTRAK PRO

- The next generation in actuator design
- Designed for the harshest applications
- Electronic load monitoring (ELM)
- Small size with minimal retracted length
- Acme or ball screw models
- IP66 protection as standard
- Manual override as standard
- Wide range of options
- Clevis mounting

Supply voltages	12, 24, 36 VDC and 115, 230, 400 VAC
Speed range	0.004 - 2 inch/sec
Dynamic load, maximum	2000 lbf
Static load, maximum	4000 lbf
Stroke length, maximum	36 inches
Protection degree, maximum	IP67
Feedback options	potentiometer or encoder
Limit switch options	external or internal adjustable / internal programmable
Mounting options	clevis, tube mounting or trunnion
Life	designed for 20 years, based on 1 cycle/day
Warranty	up to 3 years
Controls	a large range of controls are available

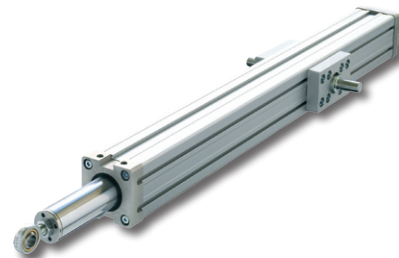
Thomson Precision Linear Actuators

Thomson Precision Linear Actuators are our top-of-the-line actuators. They are built to be strong, robust and reliable, yet very accurate and flexible. They are available in five different sizes, each with many different mechanical configurations, motor alternatives and mounting options. Thomson Precision Linear Actuators have the reliability, accuracy and functional flexibility to suit almost any application with guaranteed trouble-free operation in the toughest environments.



ECT-SERIES

- Very robust, strong and reliable
- Withstands harsh environments
- Stainless steel extension tube
- High precision ball screw drive
- 100% duty cycle
- 3 phase AC motor or AC-servo motor
- High repeatability



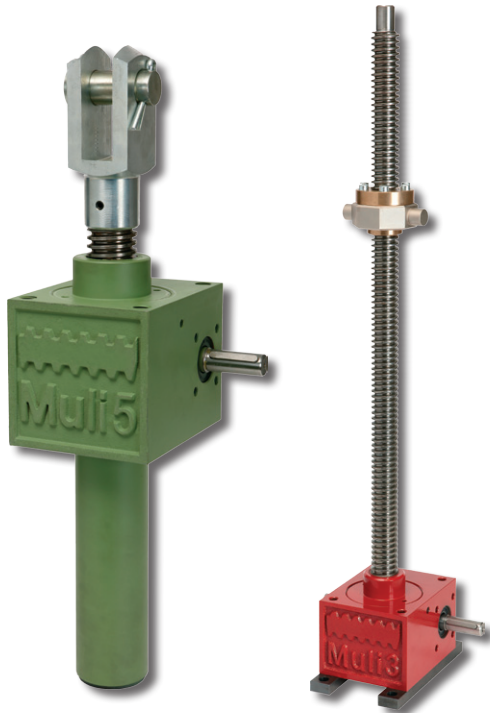
T-SERIES

- Combines durability, performance and ease-of-use
- Slide guide bushings perfect for tough applications
- Large selection of factory-engineered options and accessories
- Ball screw drive, hard chromed steel extension tube
- IP65 protection class and other wash down options

Motor alternatives	24VDC, 400 VAC 3 phase and AC-servo as standard (others on request)
Speed range	0.04 - 79 inch/sec.
Dynamic load, maximum	8540 lbf
Static load, maximum	8540 lbf
Stroke length, maximum	79 inches
Protection degree, maximum	IP65
Feedback options	encoder, resolver, smart feedback device (SFD)
Limit switch options	magnetic sensors
Mounting options	clevis, trunnion or mounting feet
Life	up to 20 years of use (load and speed dependent)
Warranty	up to 3 years
Controls	various alternatives available (motor dependent)

Thomson Screw Jacks

The Thomson screw jack product line provides reliability and versatility in a variety of applications. Technically mature, and with an easy-to-mount, rectangular housing, it can easily be extended to form wide-area jack systems with the help of its wide range of accessories.



THOMSON SCREW JACKS

- Models with moving or rotating screw available
- Models available that can provide thrust to operate large numbers of solar panels simultaneously
- Can easily be synchronized with other units to drive multiple rows of solar panels
- Very stiff system to provide highly accurate positioning
- Self-locking versions prevent back-driving in windy conditions
- Slow extension speeds – down to 0.0001 inch extension per each revolution input
- Very low maintenance
- Optional limit switches for end-of-stroke protection
- Variety of motor flange adapters to allow customer-preferred motors
- Designed with high-quality components and materials to be robust and offer long and trouble-free operation under the toughest conditions

Supply voltages	motor and drive dependent
Dynamic load, maximum	11,240 lbf
Limit switch options	external adjustable
Mounting options	clevis or trunnion
Warranty	up to 3 years
Controls	various alternatives available (motor dependent)

USA, CANADA and MEXICO

Thomson
203A West Rock Road
Radford, VA 24141, USA
Phone: 1-540-633-3549
Fax: 1-540-633-0294
E-mail: thomson@thomsonlinear.com
Literature: literature.thomsonlinear.com

EUROPE

United Kingdom

Thomson
Fishleigh Road
Barnstaple
EX31 3UD, United Kingdom
Phone: +44 (0)1271 334 500
Fax: +44 (0)1271 334 501
E-mail: sales.uk@thomsonlinear.com

Germany

Thomson
Nürtinger Straße 70
72649 Wolfschlügen, Germany
Phone: +49 (0) 7022 504 100
Fax: +49 (0) 7022 504 405
E-Mail: sales.wolfschlügen@thomsonlinear.com

Sweden

Thomson
Box 9053
SE-291 09 Kristianstad, Sweden
Phone: +46 (0) 44-24 67 00
Fax: +46 (0) 44-24 40 85
E-mail: sales.scandinavia@thomsonlinear.com

Italy

Thomson
Largo Brughetti
I-20030 Bovisio Masciago, Italy
Phone: +39 0362 594260
Fax: +39 0362 594263
E-mail: info@thomsonlinear.it

France

Thomson
C.P. 80018
12, Rue Antoine Becquerel – Z.I. Sud
F-72026 Le Mans Cedex 2, France
Phone: +33 (0) 243 50 03 30
Fax: +33 (0) 243 50 03 39
E-mail: sales.france@thomsonlinear.com

Spain

Thomson
Rbla Badal, 29-31 7th, 1st
08014 Barcelona, Spain
Phone: +34 (0) 9329 80278
Fax: +34 (0) 9329 80278
E-mail: josep.estaran@thomsonlinear.com

ASIA

China

Thomson
Room 2205, Scitech Tower
No 22 Jianguomenwai Avenue, Beijing100004,
China
Phone: +86 400 666 1802
Fax: +86 10 6515 2063
Email: sales.china@thomsonlinear.com

Japan

Thomson
2F, Sigma Hatchobori Bldg
2-7-1 Hatchobori Chuo-ku
Tokyo 104-0032, Japan
Phone: +81-3-6222-1051
Fax: +81-3-6222-1055
E-mail: info@danahermotion.co.jp

Asia Pacific

Thomson
Unit A, 16 Floor, 169 Electric Road
Manulife Tower, North Point, Hong Kong
Phone: +852 2503 6581
Fax: +852 2571 8585
E-mail: richard.teo@thomsonlinear.com

Korea

Thomson
#407 Kinstower
Bundang Inteligy1, 25-1
Jeongja-dong, Bundang-gu
Seongnam-city, Kunggi-do, Korea
Phone: +91 22 28294058
Fax: +91 22 28394036
Email: aaron.kim@danahermotion.com

India

Thomson
Unit No 2, SDF 1
Seepz Andheri, Mumbai 400 096, India
Phone: +91 22 28294058
Fax: +91 22 28394036
E-mail: richard.teo@thomsonlinear.com