



Motion Solutions for Packaging Applications

Linear and rotary products for optimal packaging machine performance in all operating environments.

Helping You Build a Better Packaging Machine

Often the ideal design solution is not about finding the fastest, sturdiest, most accurate or even the least expensive option. Rather, the ideal solution is the optimal balance of performance, life and cost. Thomson is best positioned to help packaging industry machine builders quickly configure the optimal linear motion solution for each application.

The right technology for each job. Frequently the same machine function can be achieved in different ways. Thomson owns the broadest offering of mechanical motion technologies in the industry. We offer unbiased counsel on the optimal choice for each application.

The optimal form, fit and function. Thomson offers the broadest collection of standard products. Modified versions of standard products are routine. White paper solutions are available across the entire portfolio. Special needs can be addressed. For example, many Thomson products offer stainless steel and other protective options for food/beverage, wash down, particulate and corrosive environments.

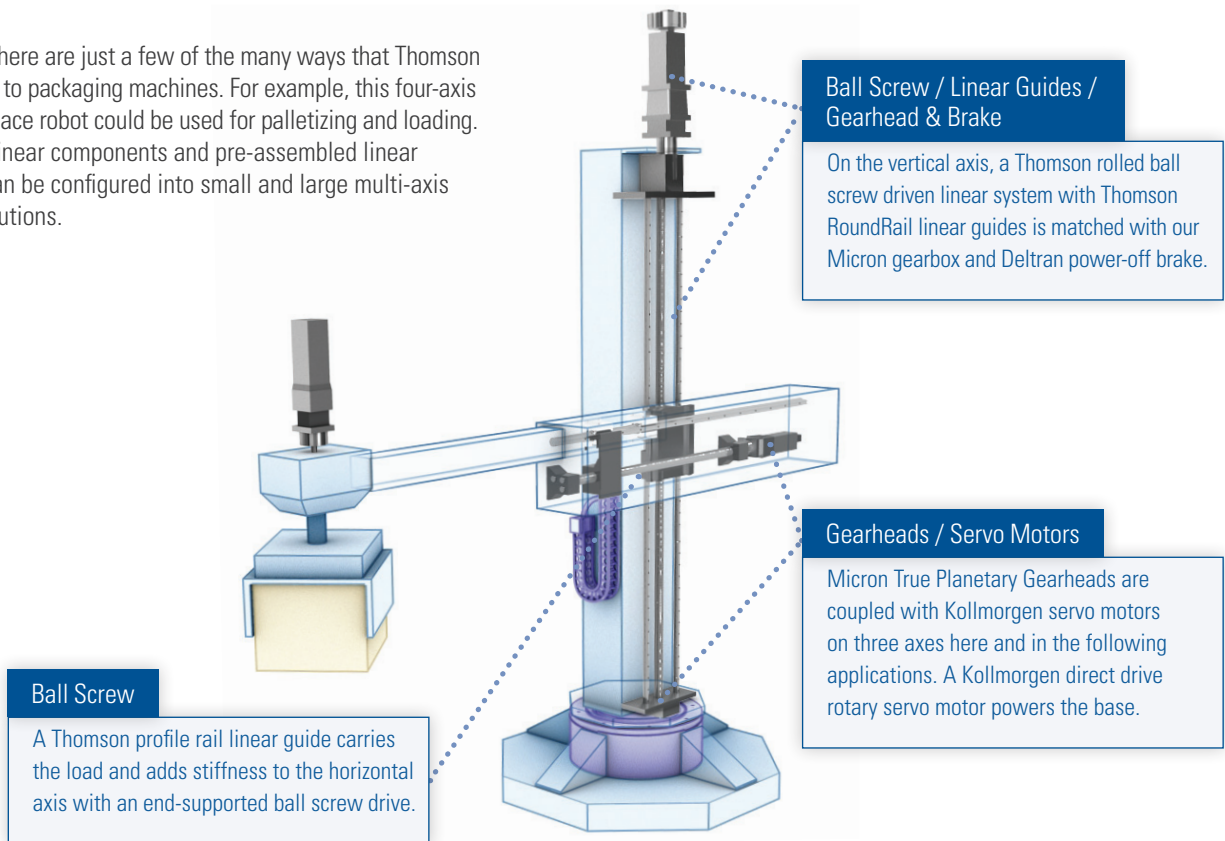
Unmatched application expertise. Choose Thomson and gain access to over 70 years of global application and problem-solving experience across many industries.

More competitive packaging machines. Thomson is available early in the design process to help optimize machine performance, life and cost. Then enjoy peace of mind during the production life of your machine as we provide the quality components, predictable costs and on-time delivery to keep your business running smoothly. Thomson is the name you can trust for power transmission and linear motion technologies. Call us today to discuss your next application or any of our 2,000+ distribution partners around the world for fast delivery of replacement parts.



PICK-AND-PLACE / PALLETIZING

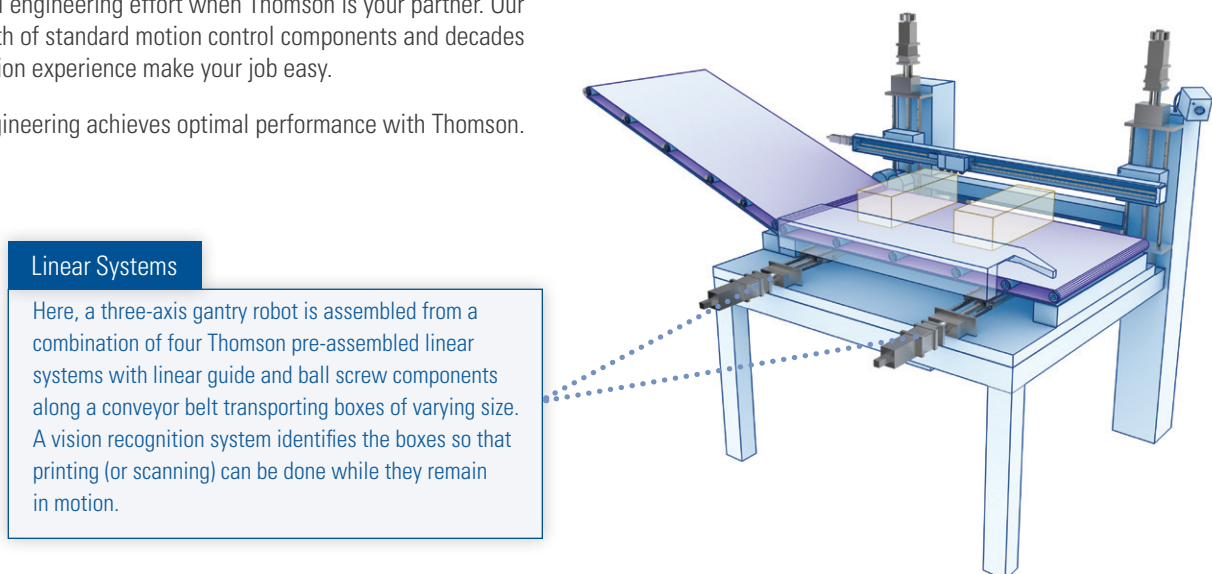
Illustrated here are just a few of the many ways that Thomson adds value to packaging machines. For example, this four-axis pick-and-place robot could be used for palletizing and loading. Thomson linear components and pre-assembled linear systems can be configured into small and large multi-axis motion solutions.



LABEL PRINTING / SCANNING

Accuracy, high speed and flexibility can be achieved with modest mechanical engineering effort when Thomson is your partner. Our vast breadth of standard motion control components and decades of application experience make your job easy.

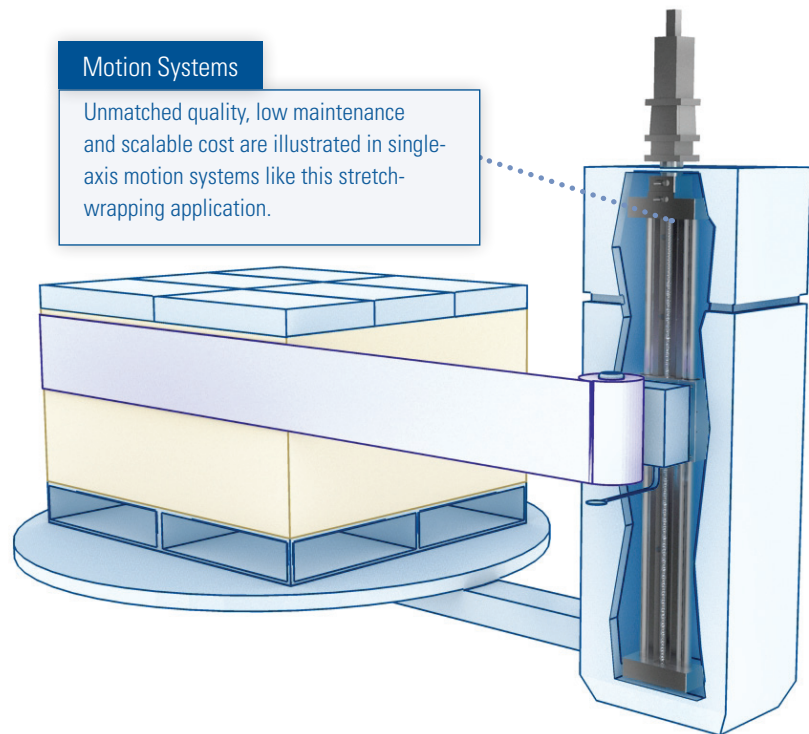
Simple engineering achieves optimal performance with Thomson.



STRETCH WRAPPING

Simple, high-quality machines can be built from standard components providing long life, virtually maintenance-free. Thomson owns multiple linear motion technologies capable of accomplishing the same task and unbiased support to help dial in the optimal balance of performance, life and total cost.

Speed up the design process and fine-tune your machine with help from Thomson.



CARTON PACKING

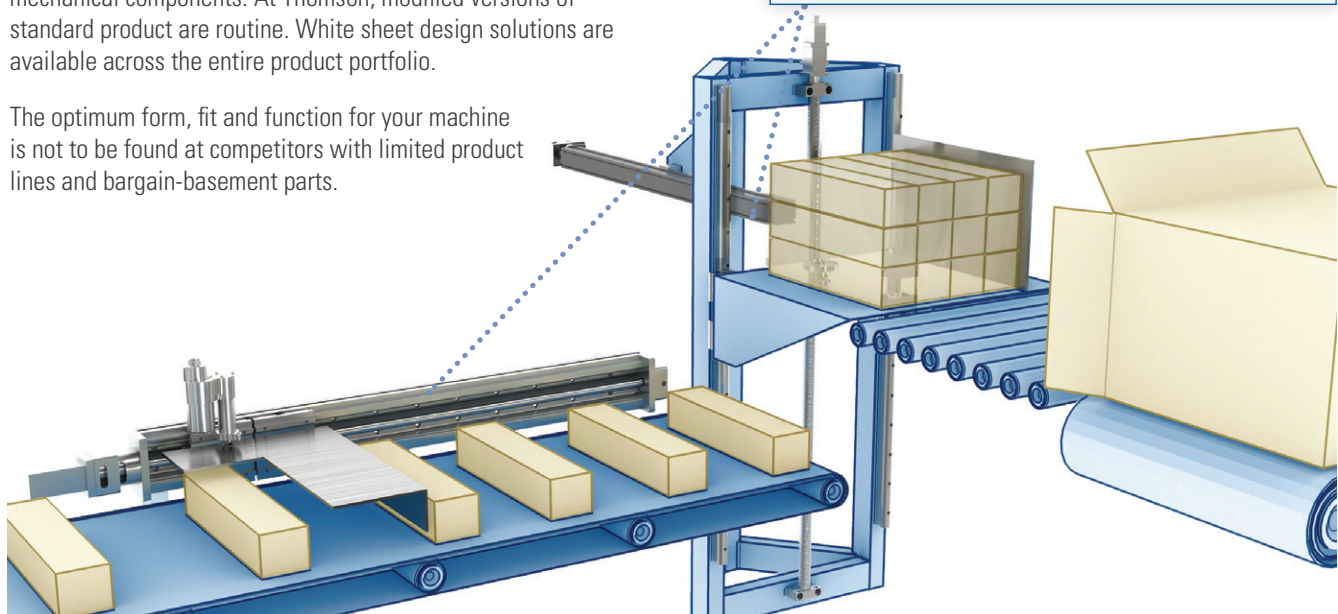
If you are building your own production line or manufacturing machines for resale, Thomson is uniquely positioned to help you get the job done right the first time.

Carton packing applications, for example, may have special needs best met with a combination of standard and customized mechanical components. At Thomson, modified versions of standard product are routine. White sheet design solutions are available across the entire product portfolio.

The optimum form, fit and function for your machine is not to be found at competitors with limited product lines and bargain-basement parts.

Pre-Assembled and Modified Systems and Components

Here, the most efficient and cost-effective solution involves a thoughtful combination of pre-assembled Thomson linear systems, separate linear guide and ball screw components, Deltran clutches and brakes, Micron gearheads and a slightly modified electric linear actuator.

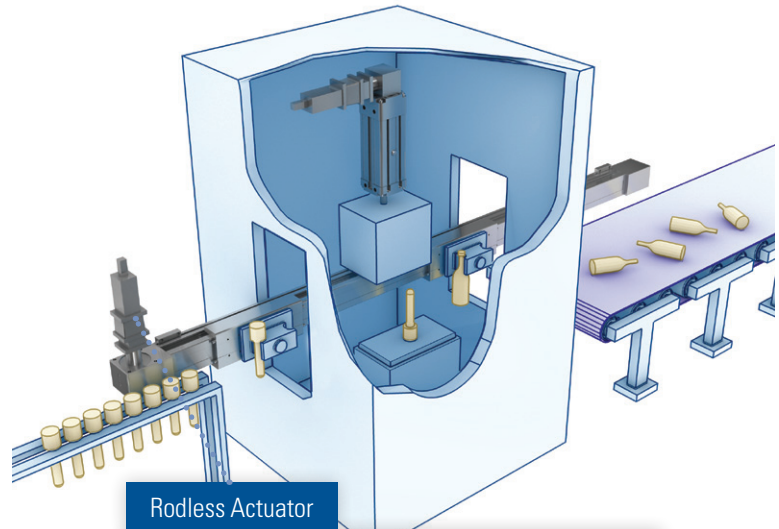


PET BOTTLE MANUFACTURING

Choose Thomson as a partner and work side-by side with the inventor and longtime owner of multiple mechanical motion technologies. Leverage decades of application experience on six continents to help build your next machine.

Two carriages are mechanically synchronized to optimize pick-and-place workflow while the rodless electric actuator performs the molding.

Give Thomson a call to discuss the full range of options to optimize performance and control costs.



Rodless Actuator
Here we illustrate how a Thomson rodless electric actuator can make the more commonly used hydraulic cylinder obsolete, providing better control, higher speed, simpler design, less energy consumption and a more environmentally friendly solution.

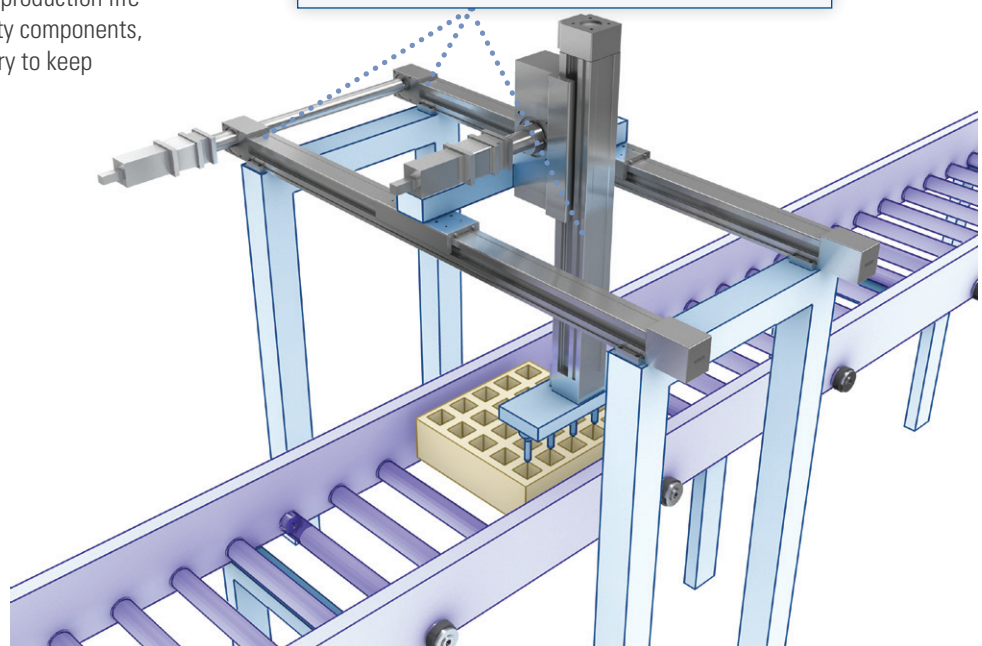
FILLING

The right mix of linear motion components enables this filling machine the flexibility to handle a wide range of tasks with minimal changeover.

Work with Thomson early in the design process, then enjoy peace of mind during the production life of your machine as we provide quality components, predictable costs and on-time delivery to keep your business running smoothly.

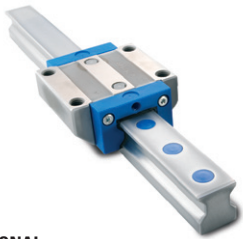
Linear Systems

A two-axis gantry robot moves a tool with nozzles that fill each row of the pallet. Fully enclosed linear systems keep contaminants out of the mechanisms and also eliminate risk of contaminating the filling process.



Thomson Understands the Packaging Industry.

We are deeply experienced with the critical motion-control challenges of the packaging industry, and we have developed quality products and solutions to address them. For example, our Micron gearheads can be ordered in 100 percent stainless steel and with food-grade lubrication. Many Thomson products feature special coatings and other protective options for use in wash-down, particulate and corrosive environments.



OPTIONAL

- Stainless Steel Protection
- Wash-Down or/and Chemical Protection
- Customization

PROFILE RAIL

With sizes ranging from our ultra compact 5 mm MicroGuide™ to the robust 55 mm 500 Series roller, as well as compliancy ranging from our self-aligning T-Series (transport profile rail) to the extremely rigid, machine-tool-grade roller profile rail, Thomson is your one-stop source for all profile rail.

ROUNDRAIL LINEAR GUIDES & COMPONENTS

While shafts may appear the same, there are significant performance differences due to the manufacturer's selected standards and the manufacturing processes used to achieve them. Combine Thomson's unique design advantages with our tremendous on-hand stock, you will have the tools to deliver the difference.

LEAD AND BALL SCREWS

Thomson lead screws are the "just right" solution for many linear positioning applications, and the patented zero-backlash nut technology provides excellent repeatability with high stiffness and extremely low drag torque. For the more demanding applications, we offer the most complete line of industrial ball screws in the industry. Our broad product offering and years of application expertise allow us to provide the right solution to meet your unique application requirements.

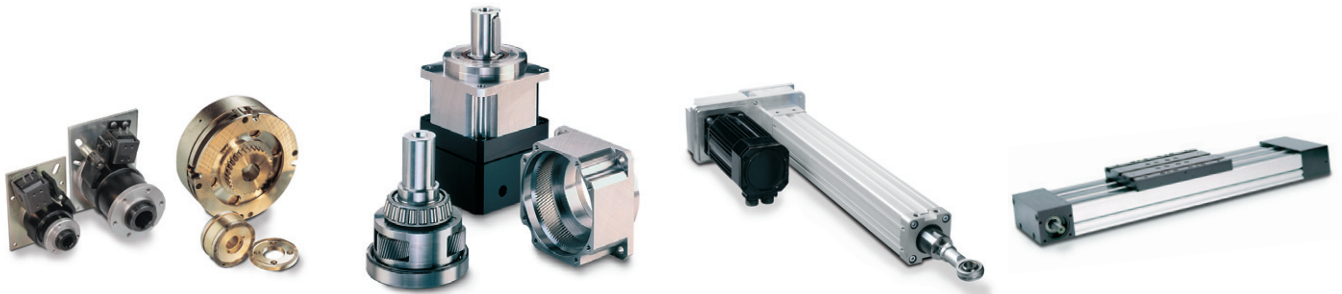
LINEAR ACTUATORS

Our linear actuators are designed for rugged, reliable linear motion applications. Numerous choices in stroke, load, motor type, feedback, limits and control options make these linear actuators very versatile. Talk to us about the many advantages of using electric linear actuators in place of hydraulics or pneumatics. And if you can't find the actuator to meet your application needs, call us for an actuator built to your needs. We build more custom actuators than anyone in the world.

The Broadest Line of Rotary and Linear Motion Components for Optimized Life, Performance and Cost.

Thomson is linear motion optimized. We own the broadest standard product offering of mechanical motion technologies in the industry. We routinely and confidently provide modified versions of standard products. And white-sheet design solutions are available across our entire product portfolio.

Thomson invented anti-friction linear technology over 70 years ago and has led the industry ever since. The Thomson brand is recognized and trusted as the global leader in linear motion technology. Turn to us for your packaging motion needs.



CLUTCHES AND BRAKES

Our brake and clutch products are working in a wide range of applications specific to the food and beverage packaging industries. These products set the solid foundation for the broad range of standard and custom products currently available to our customers.



GEARHEADS

Planetary gearheads are used on high-precision motion control applications that require a high torque-to-volume ratio, high torsional stiffness and low backlash. Thomson offers these precision planetary gearheads for all duty cycles, and all with RediMount compliant mounting systems. Web-based sizing, selection, pricing and 3D models of Micron gearheads are available at www.micronmotioneering.com.



PRECISION LINEAR ACTUATORS

The compact design and higher load capacities of our precision linear actuators make them ideal for flexible integration in tight areas. These programmable precision linear actuators are available in a wide range of voltage, thrust, stroke and mounting configurations. Designed for high-speed, high-load, continuous operation. Stroke up to 2 m (6.5 ft), load up to 40 kN (9,000 lb) and speed up to 2 m/s (6.5 ft/s).



LINEAR MOTION SYSTEMS

Our linear motion systems can be used virtually anywhere. They can support and move a range of loads and provide high precision and tight tolerances. Pre-engineered, pre-assembled, ready to install, our systems support loads with ball guides, slide guides or wheel guides. Actuation with either ball screw, lead screw or belt drive. our systems support 2D or 3D move profiles with multi-axis configurations. Web-based sizing, selection, pricing and 3D models of Thomson linear systems are available at www.linearmotioneering.com.

USA, CANADA and MEXICO

Thomson
203A West Rock Road
Radford, VA 24141, USA
Phone: 1-540-633-3549
Fax: 1-540-633-0294
E-mail: thomson@thomsonlinear.com
Literature: literature.thomsonlinear.com

EUROPE

United Kingdom

Thomson
Fishleigh Road
Barnstaple
EX31 3UD, United Kingdom
Phone: +44 (0)1271 334 500
Fax: +44 (0)1271 334 501
E-mail: sales.uk@thomsonlinear.com

Germany

Thomson
Nürtinger Straße 70
72649 Wolfschlügen, Germany
Phone: +49 (0) 7022 504 100
Fax: +49 (0) 7022 504 405
E-Mail: sales.wolfschlügen@thomsonlinear.com

Sweden

Thomson
Box 9053
SE-291 09 Kristianstad, Sweden
Phone: +46 (0) 44-24 67 00
Fax: +46 (0) 44-24 40 85
E-mail: sales.scandinavia@thomsonlinear.com

Italy

Thomson
Largo Brughetti
I-20030 Bovisio Masciago, Italy
Phone: +39 0362 594260
Fax: +39 0362 594263
E-mail: info@thomsonlinear.it

France

Thomson
C.P. 80018
12, Rue Antoine Becquerel – Z.I. Sud
F-72026 Le Mans Cedex 2, France
Phone: +33 (0) 243 50 03 30
Fax: +33 (0) 243 50 03 39
E-mail: sales.france@thomsonlinear.com

Spain

Thomson
Rbla Badal, 29-31 7th, 1st
08014 Barcelona, Spain
Phone: +34 (0) 9329 80278
Fax: +34 (0) 9329 80278
E-mail: josep.estaran@thomsonlinear.com

ASIA

China

Thomson
Room 2205, Scitech Tower
No 22 Jianguomenwai Avenue, Beijing100004,
China
Phone: +86 400 666 1802
Fax: +86 10 6515 0263
Email: sales.china@thomsonlinear.com

Japan

Thomson
2F, Sigma Hatchobori Bldg
2-7-1 Hatchobori Chuo-ku
Tokyo 104-0032, Japan
Phone: +81-3-6222-1051
Fax: +81-3-6222-1055
E-mail: info@danahermotion.co.jp

Asia Pacific

Thomson
Unit A, 16 Floor, 169 Electric Road
Manulife Tower, North Point, Hong Kong
Phone: +852 2503 6581
Fax: +852 2571 8585
E-mail: richard.teo@thomsonlinear.com

Korea

Thomson
#407 Kinstower
Bundang Inteligy1, 25-1
Jeongja-dong, Bundang-gu
Seongnam-city, Kunggi-do, Korea
Phone: +91 22 28294058
Fax: +91 22 28394036
Email: aaron.kim@danahermotion.com

India

Thomson
Unit No 2, SDF 1
Seepz Andheri, Mumbai 400 096, India
Phone: +91 22 28294058
Fax: +91 22 28394036
E-mail: richard.teo@thomsonlinear.com